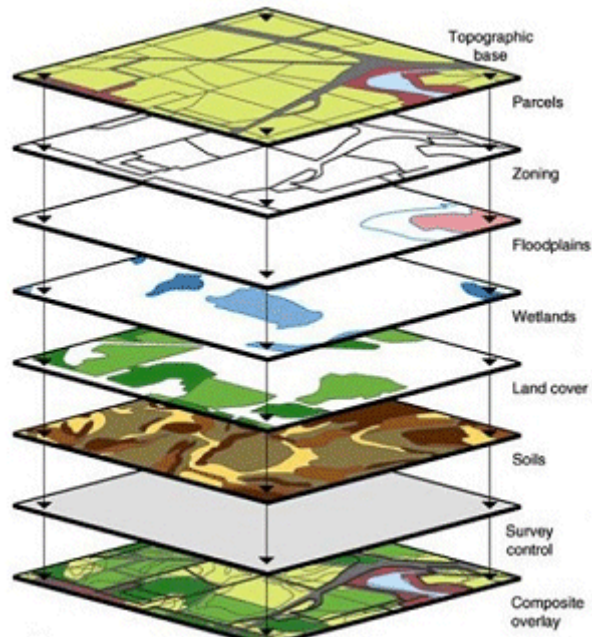


## **Absolute Location**



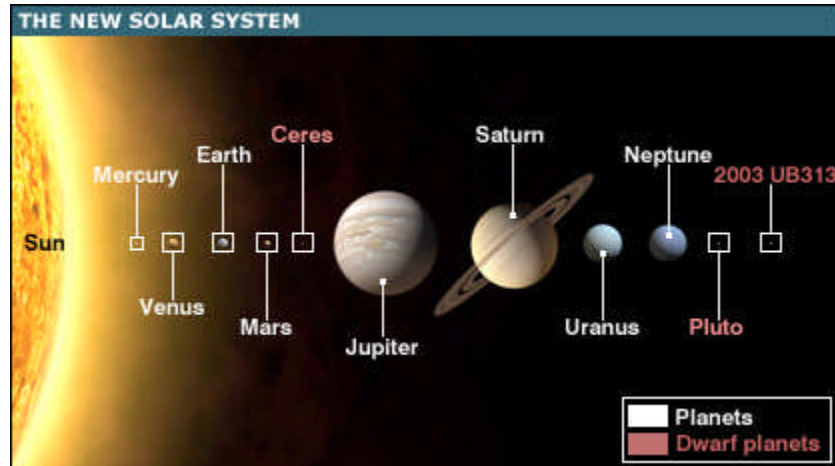
- **The exact place on earth where a geographic feature is found, such as a city.**
- **Latitude and Longitude are ways to specify these coordinates.**

# Geographic Information System (GIS)



- **Stores information about the world in a digital database.**
- **Has the ability to combine information from a variety of sources and display it in ways that allow the user to visualize the use of space in different ways**
- **Can display different kinds of information to help solve real-world problems**

# Solar System



- **Consists of the sun and the 8 known planets**
- **Contains comets, asteroids**

# Continent



**Landmasses above water on earth**

# **Volcano**



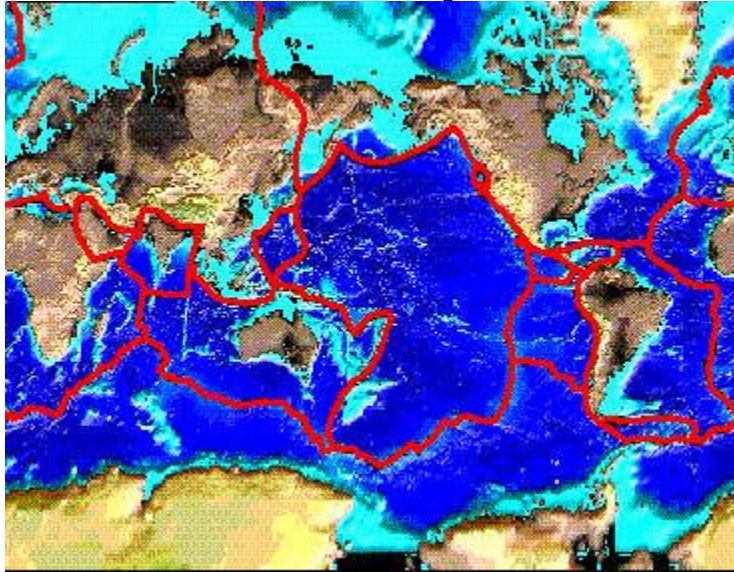
**A natural event, formed when magma, gases, and water from the lower part of the crust or mantle collect in underground chambers and eventually erupt and pour out of cracks in the earth's surface**

# Canyon



**A deep gorge, often created by a stream or river**

## **Tectonic plate**



**An enormous moving shelf that forms the earth's crust**

## **Mechanical Weathering**



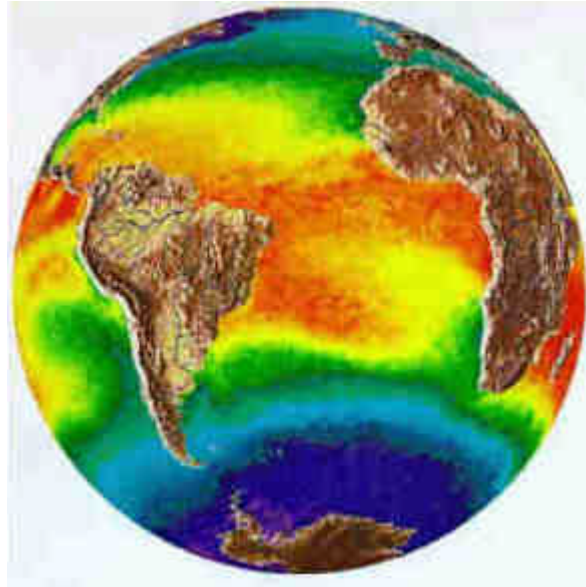
**Natural processes that break rock into smaller pieces**

## **Glacier**



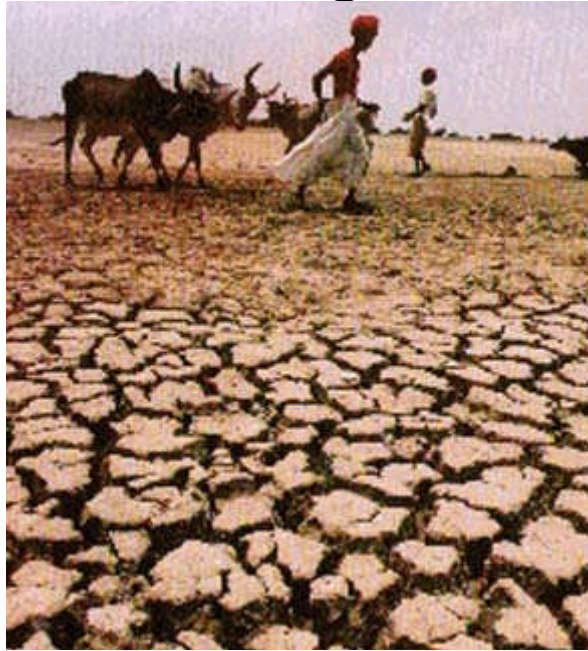
**A large, long-lasting mass of ice that moves because of gravity**

# **Climate**



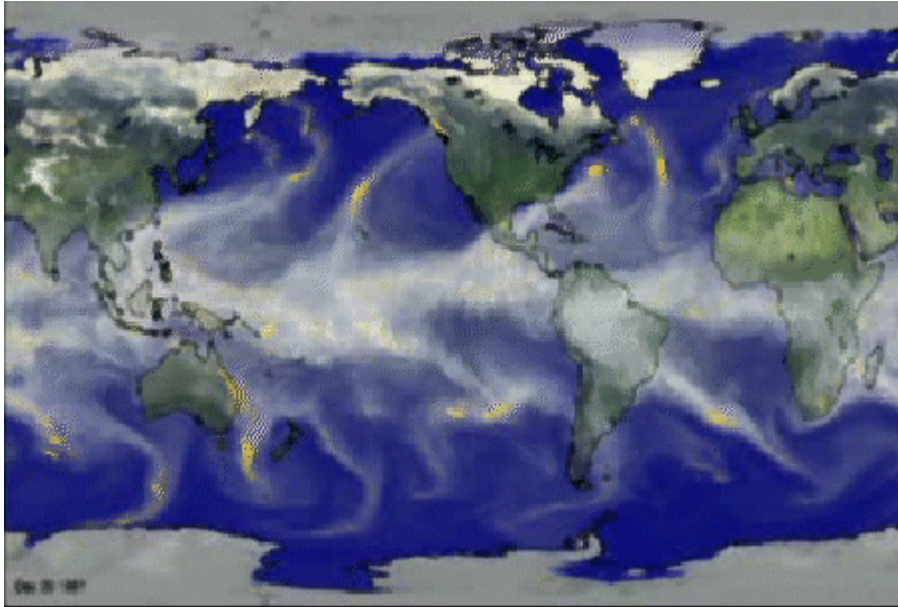
**The typical weather conditions at a particular location as observed over time**

## **Drought**



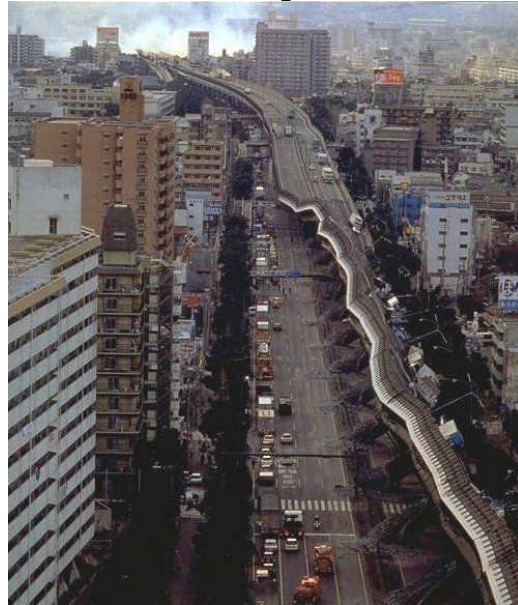
**A long period without rain or with very minimal rainfall**

## **El Niño**



- **A weather pattern created by the warming of the waters off the west coast of South America**
- **Pushes warm water and heavy rains toward the Americas and produces drought conditions in Australia and Asia**

## Earthquake



- **A sometimes violent movement of the earth, produced when tectonic plates grind or slip past each other at a fault**
- **San Francisco Earthquake (1906). Was the most devastating earthquake in California and U.S. history**

# Tsunami



- **A giant ocean wave, caused by an underwater earthquake or volcanic eruption, with great destructive power**
- **On December 26, 2004, massive tsunamis, caused widespread devastation in countries around the Indian Ocean**

# Ring of Fire



The chain of volcanoes that lines the Pacific Rim