



**SAN ANTONIO  
INDEPENDENT SCHOOL DISTRICT**



# 2021-2022 ENROLLMENT GUIDE

**A COMPREHENSIVE OVERVIEW OF  
SAN ANTONIO ISD'S OFFERINGS**

- High Schools
- Middle Schools
- Academies
- Elementary Schools
- Early Childhood Centers
- Schools By Referral



# 2021-2022

## INSTRUCTIONAL CALENDAR

San Antonio Independent School District  
514 W. Quincy St. | San Antonio, Texas 78212  
210-554-2200 (phone) | www.saisd.net  
f @SanAntonioISD @SAISD

### Intercession Dates (Extended Breaks)

'21 JULY						
S	M	T	W	T	F	S
				1	2	3
4	5	6	7	8	9	10
11	12	13	14	15	16	17
18	19	20	21	22	23	24
25	26	27	28	29	30	31

AUGUST						
S	M	T	W	T	F	S
1	2	3	4	5	6	7
8	9	10	11	12	13	14
15	16	17	18	19	20	21
22	23	24	25	26	27	28
29	30	31				

SEPTEMBER						
S	M	T	W	T	F	S
			1	2	3	4
5	6	7	8	9	10	11
12	13	14	15	16	17	18
19	20	21	22	23	24	25
26	27	28	29	30		

LEGEND	
	Regular Instructional Day
	Intercession Dates (Extended Breaks)
	Professional Development
	Holiday
	Inclement Weather Makeup Day
	Start of Grading Period   End of Grading Period

OCTOBER						
S	M	T	W	T	F	S
				1	2	
3	4	5	6	7	8	9
10	11	12	13	14	15	16
17	18	19	20	21	22	23
24	25	26	27	28	29	30
31						

NOVEMBER						
S	M	T	W	T	F	S
	1	2	3	4	5	6
7	8	9	10	11	12	13
14	15	16	17	18	19	20
21	22	23	24	25	26	27
28	29	30				

DECEMBER						
S	M	T	W	T	F	S
			1	2	3	4
5	6	7	8	9	10	11
12	13	14	15	16	17	18
19	20	21	22	23	24	25
26	27	28	29	30	31	

'22 JANUARY						
S	M	T	W	T	F	S
						1
2	3	4	5	6	7	8
9	10	11	12	13	14	15
16	17	18	19	20	21	22
23	24	25	26	27	28	29
30	31					

FEBRUARY						
S	M	T	W	T	F	S
				1	2	3
4	5	6	7	8	9	10
11	12	13	14	15	16	17
18	19	20	21	22	23	24
25	26	27	28	29	30	

MARCH						
S	M	T	W	T	F	S
				1	2	3
4	5	6	7	8	9	10
11	12	13	14	15	16	17
18	19	20	21	22	23	24
25	26	27	28	29	30	31

APRIL						
S	M	T	W	T	F	S
					1	2
3	4	5	6	7	8	9
10	11	12	13	14	15	16
17	18	19	20	21	22	23
24	25	26	27	28	29	30

MAY						
S	M	T	W	T	F	S
						1
2	3	4	5	6	7	8
9	10	11	12	13	14	15
16	17	18	19	20	21	22
23	24	25	26	27	28	29
30	31					

JUNE						
S	M	T	W	T	F	S
				1	2	3
4	5	6	7	8	9	10
11	12	13	14	15	16	17
18	19	20	21	22	23	24
25	26	27	28	29	30	

JULY						
S	M	T	W	T	F	S
						1
2	3	4	5	6	7	8
9	10	11	12	13	14	15
16	17	18	19	20	21	22
23	24	25	26	27	28	29
30	31					

### IMPORTANT DATES

#### 2021

July 5 - July 9 - District Closed; Holiday - Independence Day

July 19 - July 30 - Intercession

August 2 - 6 - Professional Development

August 9 - First Day of School | Start of 1st Grading Period | Start of 1st Semester

September 6 - Holiday - Labor Day

October 8 - End of 1st Grading Period

October 11 - Holiday - Columbus Day / Indigenous Peoples' Day

October 12 - Start of 2nd Grading Period

November 22 - 26 - Holiday - Thanksgiving Break

December 17 - End of 2nd Grading Period | End of the 1st Semester

December 20 - December 31 - Holiday - Winter Break

#### 2022

January 3 - 7 - Intercession

January 10 - Professional Development

January 11 - Start of 3rd Grading Period | Start of the 2nd Semester

January 17 - Holiday - Martin Luther King Jr. Day

February 21 - Presidents Day / Inclement Weather Makeup Day

March 3 - End of 3rd Grading Period

March 4 - Inclement Weather Makeup Day

March 4 - March 11 - Holiday - Spring Break

March 14 - Start of 4th Grading Period

April 8 - Holiday

April 15 - Holiday - Easter Break

May 30 - Holiday - Memorial Day

June 2 - Last Day of School | End of 4th Grading Period | End of the 2nd Semester

June 3 - Professional Development

June 6 - June 17 - Intercession

July 4 - 8 - District Closed; Holiday - Independence Day



**430 minutes per day**  
Calendar includes at least 75,600 minutes.  
Total = 77,400 minutes (without the waiver)  
**Grading Periods:**  
1st = 44 days | 2nd = 44 days | 3rd = 36 days | 4th = 56 days  
**180 student days**  
**187 teacher days**

# Table of Contents

◆ Message from the Superintendent & Board of Trustees.....	4
◆ District Accolades.....	5
◆ District Support Services .....	6
o Disability and Learning Support Services	
o Enrollment Services	
o Extended Day Program	
o Family And Community Engagement	
o Homeless Support Services	
o Students In Foster Care	
o International Welcome Center	
o SAISD Customer Experience Center & Parent Hotline	
o School Meals	
o Social Services	
o Student Health Services	
o Transportation	
o Uniform Assistance	
◆ Stay Connected.....	9
◆ Enrollment Pathways .....	10
◆ Enrollment Pathways Matrix .....	11
◆ Quick and Easy Registration .....	12
◆ Early Education Options.....	13
◆ TEA Accountability Rating System.....	14
◆ Learn About Our Schools.....	15
o Graduation Plans	
o High Schools	
o Middle Schools	
o Academies	
o Elementary Schools	
o Early Childhood Education Centers	
o Schools by Referral	
◆ District Map.....	64
◆ Feeder Patterns .....	66
◆ Bond 2020 .....	68
◆ Index of Schools.....	69
◆ Important Contacts.....	70

**ACCESSIBILITY:** Please download for a fully ADA compliant document.

# A Message from our Superintendent



**Pedro Martinez**  
Superintendent

Welcome to the San Antonio Independent School District, where we have been educating children since 1854!

I hope you find this Enrollment Guide helpful as you navigate the many options we offer. It was created to help you learn about our schools and programs designed to best meet the diverse needs of our students. Our goal is to develop lifelong learners who graduate feeling empowered and equipped to pursue their dreams.

We have high expectations throughout our schools with programs to support our students from their start in full-day prekindergarten all the way through high school graduation. In addition, alumni support coordinators continue the relationship with students through their first year in college to ensure they are supported and on track toward a college degree.

SAISD offers a wide variety of offerings for students to pursue, including career exploration programs, dual language, advanced academics and the International Baccalaureate framework, as well as extensive athletics, fine arts and JROTC/LOTC opportunities.

Non-boundary choices by application include magnet programs at the high schools, and a number of schools with diverse areas of focus and learning environments, including single-gender schools, early college high schools, and career-themed, industry-led schools.

Along with traditional school models, we also offer academies with non-traditional grade ranges such as PK-8.

This guide features details on each SAISD school, as well as information on our services to support students and families.

I thank you for taking the time to review this guide and to learn more about what all SAISD has to offer.

Sincerely,

A handwritten signature in black ink that reads "Pedro Martinez".

Pedro Martinez  
SAISD Superintendent

## Board of Trustees



**Patti Radle**  
President  
District 5



**Arthur V. Valdez**  
Vice President  
District 4



**Leticia Ozuna**  
Trustee  
District 3



**Ed Garza**  
Trustee  
District 7



**Sarah Sorensen**  
Trustee  
District 1



**Christina Martinez**  
Trustee  
District 6



**Alicia Perry**  
Trustee  
District 2



# DISTRICTWIDE ACCOLADES



## DUAL LANGUAGE

More than 60 SAISD campuses offer Dual Language programs, the most in Bexar County.



## IB GLOBAL THINKERS

SAISD has the most International Baccalaureate campuses in Bexar County, with 9 schools spanning PK-12 that offer whole child, global-focused academic programming.



## FINE ARTS

100% of SAISD students have access to Fine Arts programs.



## 1:1 TECHNOLOGY

All SAISD schools provide devices and home internet access to every student.



## MOST CHOICE, BEST-FIT OPTIONS

SAISD offers the most PK-12 Choice options open to all in Bexar County, with 48 programs available in more than 40 schools.



## FREE FULL-DAY PRE-K

SAISD offers the most options for free full-day Pre-K programs for 3- and 4-year-olds, including Montessori, Dual Language, and Head Start.



## FREE MEALS

All SAISD students, regardless of income, receive free nutritious meals, including breakfast, lunch, and snack.



## 100% WI-FI LITERACY

100% of SAISD buses encourage literacy through the availability of Wi-Fi technology and the BiblioTech library of audiobooks.



## EARLY COLLEGE OPPORTUNITIES

SAISD offers the most TEA-recognized early college opportunities in Bexar County, including 5 P-TECH programs, 3 Early College High School programs, and dual credit available at every high school.



## SCHOLARSHIPS

SAISD students received \$99 million in scholarship offers in 2020.



## A-RATED

Nine SAISD schools received an A-rating from TEA and 42 schools earned distinctions in 2019.



## PUBLIC MONTESSORI

SAISD opened the first free Montessori and Dual Language Montessori schools in Bexar County.



## DISTINGUISHED SENIORS

In 2021, of the 500 prestigious Dell Scholarships awarded nationwide, 20 were given to SAISD seniors.



## BLUE RIBBON EXCELLENCE

Three SAISD schools have earned the National Blue Ribbon distinction.



## WHOLE CHILD WELL-BEING

SAISD understands the importance of developing the whole child, recognizing that academic, behavioral, and social-emotional instruction all play critical roles in the long-term success of our students.



## AWARD-WINNING SINGLE-GENDER SCHOOLS

SAISD offers 3 single-gender campuses, with YWLA earning national recognition through U.S. News & World Report and National Blue Ribbon honors.



## DISABILITY SERVICES

SAISD offers assistance from birth through high school graduation and beyond with a full-service Disability Services Department, which encompasses Special Education, Section 504, and Dyslexia.

# » District Support Services

## **DISABILITY AND LEARNING SUPPORT SERVICES (210) 354-9565**

The District is committed to the success of every student and recognizes that because each student is unique, a one size fits all educational program is insufficient to meet the needs of all of our students. Some students need different supports than others, and fulfilling this charge necessitates a teamwork and all-in approach.

SAISD promotes inclusion and supports students with disabilities in gaining college and career readiness and independent living skills through a rigorous, nurturing learning environment, high-quality instruction, and support services that enable students to reach their full potential.

## **ENROLLMENT SERVICES (210) 554-2660**

The SAISD Enrollment Office helps families register and enroll in SAISD schools, whether it is at their neighborhood school, one of our Choice Schools, or submit a transfer request to attend a different neighborhood option. The Enrollment Team assists with determining which school best fits your child, creating online enrollment accounts, and uploading necessary documents. See pages 10 and 11 for explanation of the enrollment process or visit [www.saisd.net/enroll](http://www.saisd.net/enroll).

## **EXTENDED DAY PROGRAM (210) 554-2605**

Extended Day learning opportunities for elementary and secondary students are available at approximately 70 campuses and for students in grades Pre-K through 8th. In partnership with the City of San Antonio, this program offers continued learning through a variety of hands-on activities. More than 3,000 seats are available each year in a safe and supportive after-school environment. All students receive dinner and a snack, and programs are facilitated by experienced program providers: the YMCA, Boys and Girls Club, and the Greater San Antonio All-Stars. The City of San Antonio charges a one-time fee, based on a sliding scale. Check with your campus to determine which program they offer.

## **FAMILY AND COMMUNITY ENGAGEMENT (210) 554-2205**

The Office of Family and Community Engagement provides free parent workshops, information on how to be a volunteer and get involved, and connects families to the many resources the District and community offers so they can support their children socially, emotionally, and academically. On campuses, Family and Community Engagement (FACE) Specialists develop and implement programs and strategies to engage parents and the community as partners, with a focus on continually improving the academic performance of students. Visit [www.saisd.net/families](http://www.saisd.net/families) for more information.

## **HOMELESS SUPPORT SERVICES (210) 554-2635**

The SAISD Homeless Liaison supports district stakeholders in an effort to help students experiencing homeless situations by collaborating with parents, teachers and district staff. The McKinney-Vento program is a legislative mandate that upholds the educational rights of the PK-12 SAISD student.

## **STUDENTS IN FOSTER CARE (210) 554-2635**

SAISD employs a foster care district liaison to support the well-being of students in foster or kinship care. Students may be placed in foster or kinship care, as determined by the Department of Family or Protective Services (DFPS) Educational Specialist. In addition to supporting post secondary readiness for these students, SAISD upholds the Educational rights for students in the conservatorship of DFPS as identified in Title 1, Part A of the Foster Care Act.

## **INTERNATIONAL WELCOME CENTER FOR ENGLISH LANGUAGE LEARNERS, IMMIGRANT AND REFUGEE STUDENTS (IWC) (210) 554-2592**

The International Welcome Center serves English learners, as well as immigrant and refugee students and their families in grades Pre-K through 12th. We work with families of students who are speakers of a language other than English, new to the District, and who are new to U.S. schools.

Staff members administer the state-required Oral Language Proficiency Test (OLPT) to identify eligibility for program services and provide information about the bilingual/ESL programs offered in SAISD, immunizations, student uniform assistance, ESL education for adults, parent engagement opportunities, and referrals to the EL counselor for transcript analysis, and access to district and community resources.

### **SAISD CUSTOMER EXPERIENCE CENTER & PARENT HOTLINE (210) 554-2210**

The SAISD Customer Experience Center (CEC) and Parent Hotline serves the SAISD community by helping to answer questions, address concerns, and helping families access District resources. Contact us at (210) 554-2210 for questions about Canvas, ClassLink usernames and passwords, technology, meals, enrollment, Parent Portal, etc.

### **SCHOOL MEALS (210) 554-2290**

As part of SAISD's participation in the federal Child Nutrition program administered by the U.S. Department of Agriculture, all students receive breakfast and lunch at no cost, regardless of ability to pay. Supper and after-school snack also are available to students at no cost at sites participating in an after-school academic program.

All menu items and foods served to the students meet and/or exceed the guidelines set forth by the U.S. Department of Agriculture. Menu items and recipes are student selected and approved through various student events such as the Food Extravaganza and other student samplings. District recipes are developed in collaboration with the Culinary Institute of America (CIA) at San Antonio and input from SAISD's own culinary students. Menus can be viewed by accessing the department's website which provides not only the menus, but also nutritional and allergen information. Please visit [www.saisd.net/nutrition](http://www.saisd.net/nutrition)

### **SOCIAL SERVICES (210) 554-2635**

SAISD Licensed Master Social Workers (LMSW) provide social and emotional support to enhance the academic growth of all students. School social workers are a link between the home, school and community. School social workers promote personal success and enhance academic performance by advocating for students and providing quick access to support services and resources. The scope of their role includes:

- Individual and Family Counseling Crisis intervention
- Home visits
- Community agency information and referrals
- Collaboration with school staff, community agencies and organizations
- Parent conferences
- Family support services
- Other related services

### **STUDENT HEALTH SERVICES (210) 554-2435**

Student Health Services implements programs and provides services designed to reduce health related barriers to learning, promote each student's optimal level of wellness, and empower students and their families with the knowledge and skills needed to achieve lifelong health and wellness. Programs focus on prevention, early identification, referral and case management of health issues having the potential to negatively impact school attendance and academic success. Please see your school nurse for a referral to available in-district facilities for preventive care.

#### **Immunization Requirements**

Texas state law requires students attending school to be immunized against certain vaccine preventable diseases. Parents are encouraged to get children vaccinated before school starts. Students cannot go to school without the proper documentation for the required vaccines or a valid medical or conscientious exemption.

# » District Support Services - continued

## **TRANSPORTATION (210) 354-9320**

The SAISD Transportation Department provides safe transportation for students who are eligible according to the following guidelines:

- Students who attend schools within their attendance boundaries and who reside two or more miles from their assigned campuses at District designated stops.
- Students who attend a Magnet Program or Choice School are provided transportation to and from select neighborhood schools.
- Students who have cognitive limitations, physical limitations or emotional difficulties are eligible for special education transportation. A parent must complete an Admission, Review and Dismissal/Individualized Education Program meeting that is held at the student's campus.
- Students experiencing homelessness are offered transportation to and from the school of origin at the request of a parent or guardian. This request may be made at the student's campus.

### **School Bus Stop Locators**

To find information such as school bus pickup times and locations for your home address, go to **[www.saisd.net/busstop](http://www.saisd.net/busstop)**. Be sure your child is at the bus stop at least 10 minutes before the scheduled time to ensure they are there when the bus arrives.

### **School Bus Stopfinder App**

SAISD is the only district in Bexar county to offer **Stopfinder**. This program provides parents the ability to track their students, bus location and the estimated time of arrival on an app. Download Stopfinder from your phone's app store.

## **UNIFORM ASSISTANCE (210) 554-2635**

All District students must wear a uniform of black or khaki bottoms and a white top, or alternate school-approved colored shirt. The District provides uniform assistance for families in need. Please call the office for more details.

# Stay Connected

The District uses multiple platforms to keep families connected with important information. Whether it's through phone calls, texts, district sites, or social media, our goal is always to provide families with what they need to know.

## FRONTLINE PARENT PORTAL

The SAISD Parent Portal is an easy-to-use and secure communication tool that allows parents/guardians to monitor their child's progress in real-time. Parents can:

- View their child's attendance, grades, and schedule
- Contact their child's teacher by email
- Receive alerts and notifications on their phone

Visit [www.saisd.net/parentportal](http://www.saisd.net/parentportal) for more information and to register today.

## SCHOOLMESSENGER NOTIFICATION SYSTEM

When large group notifications must go out, SAISD contacts families by phone, email, and text message using a system called SchoolMessenger. SAISD and your school use SchoolMessenger to let you know about emergency situations, remind you about school and district events, update you on your child's attendance, and more.

If your phone number or address has changed since you enrolled your student, please let your school know so they can update this information in the district's student information system.

**To opt in to receive text messages, send "YES" to the short code 67587.**

## SAFE SCHOOLS APP

This app is available to students, parents or anyone in the community to anonymously alert the SAISD Police Department about a wide range of concerns, such as bullying, mental health issues or potential threats. It is monitored 24 hours a day, 7 days a week. Download the P3 Campus app or submit tips online at [www.p3campus.com](http://www.p3campus.com). Individuals also may call **(210) 227-8477**.

## SOCIAL MEDIA CHANNELS

The District and some campuses use social media channels to communicate with parents. Links to social media channels are found on the home pages of the District and participating campuses.





# Enrollment Pathways

At SAISD, we offer multiple ways for families living in our attendance zone and within Bexar County to access our schools. Families enroll through one of several pathways:

- 1) Complete a registration for a **Neighborhood School** (see pg. 16 for instructions)
- 2) Submit a **Choice Application**
- 3) Submit a **Transfer Request**
- 4) Submit a **Head Start Application**
- 5) Receive a **Referral**

The Enrollment Pathways Matrix on page 15 lists all the schools and their pathways for enrollment. For example:

● NEIGHBORHOOD SCHOOL ● CHOICE APPLICATION ● TRANSFER REQUEST ● HEAD START APPLICATION ● BY REFERRAL

Sample MS



Means that families can enroll in Sample Middle School if they live in the neighborhood school attendance zone or submit a transfer request.

Sample ES



Means that families can enroll in Sample Elementary School by submitting a Head Start application or speaking with school counselor for a referral.



## Neighborhood School

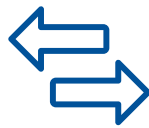
Neighborhood schools have a designated attendance zone. They offer great programs and have certified teachers in a convenient location for families. Students living in the attendance zone are guaranteed enrollment. To find out which neighborhood school your address is zoned, call the Enrollment Office **(210) 554-2660**.



## Choice Application

Choice Schools & Magnet Programs are specialized offerings typically showcasing a model around which all teaching and learning happens, such as STEM, Dual Language, International Baccalaureate, or Montessori. These can be neighborhood schools without an attendance zone or programs within a neighborhood school. Choice applications can be submitted in the following ways:

- **Online:** [www.saisdchoice.com](http://www.saisdchoice.com)
- **By Phone:** **(210) 554-2660**
- **In Person:** at any Choice School or Magnet Program campus



## Transfer Request

Students living in and out of SAISD who want to attend a different neighborhood school may submit a transfer request. Transfer approval depends on space availability, program availability (pending special needs), and campus capacity. For help submitting a transfer request, call the Enrollment Office **(210) 554-2660**.



## Head Start Application

SAISD partners with the City of San Antonio to provide the Head Start program, an early childhood learning opportunity that provides a quality education and comprehensive social services. To submit an application for Head Start, call the Early Childhood Department **(210) 554-2410**.



## By Referral

Some SAISD campuses are structured to address specialized needs of students, either life circumstances requiring alternative learning structures or by being identified through the special needs process. To be referred to a specific campus, families should speak with your child's counselor.

# Enrollment Pathways Matrix

● NEIGHBORHOOD SCHOOL ● CHOICE APPLICATION ● TRANSFER REQUEST ● HEAD START APPLICATION ● BY REFERRAL

Advanced Learning Academy		●			
Arnold ES	●		●	●	
Ball ES	●	●			
Barkley/Ruiz ES	●	●			
Baskin ES	●		●		
Beacon Hill Academy	●		●		
Bonham Academy	●	●			
Bowden Academy	●	●		●	
J.T. Brackenridge ES	●		●	●	
Brackenridge HS	●	●	●		
Brewer Academy					●
Briscoe ES	●	●			
Burbank HS	●	●			
Cameron ES	●	●			
Carroll ECEC			●	●	
Carvajal ES	●		●	●	
CAST Med HS		●			
CAST Tech HS		●			
Collins Garden ES	●		●		
Cooper at Navarro HS					●
Cotton Academy	●	●			
Crockett Academy	●		●		
Davis MS	●	●			
De Zavala ES	●		●	●	
Democracy Prep	●	●			
Douglass ES	●		●		
Edison HS	●	●	●		
Estrada Achievement Center					●
Fenwick Academy	●	●			
Forbes ES	●		●		
Foster ES	●		●	●	
Fox Tech HS		●			
Franklin ES	●		●		
Gates ES	●	●			
Gonzales ECEC		●			
Graebner ES	●		●	●	
Green ES	●		●		
Harris MS	●	●			
Hawthorne Academy	●	●			
Healy Murphy Center					●
Herff ES	●		●		
Highland Hills ES	●		●		
Highland Park ES	●		●		
Highlands HS	●	●	●		
Hillcrest ES	●		●		
Hirsch ES	●		●	●	
Hot Wells MS	●		●		

Sam Houston HS	●	●	●		
Huppertz ES	●	●			
Irving Dual Language Academy		●			
Japhet Academy	●		●		
Jefferson HS	●	●			
Kelly ES	●		●		
M.L. King Academy	●	●			
Sarah King ES	●		●	●	
Knox ECEC			●	●	
Lamar ES	●	●			
Lanier HS	●	●	●		
Longfellow MS	●		●		
Lowell MS	●		●		
Madison ES	●		●	●	
Margil ES	●		●		
Maverick ES	●		●	●	
Miller ES	●		●		
Mission Academy	●		●		
Neal ES	●		●	●	
Nelson ECEC			●	●	
Ogden ES	●		●		
Pershing ES	●		●		
Phoenix Middle College		●			●
Poe MS	●	●	●		
Rhodes MS	●	●			
Riverside Park ES	●		●		
Rodriguez Montessori ES		●			
Will Rogers Academy	●		●		
Rogers MS	●		●		
Schenck ES	●		●	●	
Smith ES	●		●		
St. Philip's ECHS		●			
Steele Montessori Academy		●			
Storm ES	●		●		
Tafolla MS	●		●		
Texans Can Academy					●
Travis ECHS		●			
Twain Dual Language Academy		●			
Tynan ECEC			●	●	
Washington ES	●		●		
Whittier MS	●		●		
Wilson ES	●		●		
Woodlawn Academy	●	●			
Woodlawn Hills ES	●	●			
Young Men's Leadership Academy		●			
Young Women's Leadership Academy		●			
YWLA Primary		●			

# Quick and Easy Registration

- 1 LOG IN WITH YOUR FRONTLINE PARENT PORTAL INFORMATION**  
Go to [www.saisd.net/register](http://www.saisd.net/register). Current SAISD families log in with their Frontline Parent Portal username and password. New to SAISD families click "Register New Family" to create an account and sign in.
- 2 UPDATE YOUR INFORMATION**  
Select or add the child you want to register. Update or add your information, complete required fields, and acknowledge all documents.
- 3 UPLOAD ALL DOCUMENTS**  
Documents may be uploaded directly onto FrontLine, texted to (210) 309-3259, or brought to your child's school.
- 4 SUBMIT AND CONFIRM!**  
Once you added your information and submitted your documents, click "**Submit**". You will be prompted to review one last time. Click "**Confirm Enrollment**" if your enrollment summary is correct. A check next to your student's name on the My Student screen indicates you're completed.

## REGISTRATION DOCUMENTS FOR NEW STUDENTS:



### PHOTO ID

Driver's license, military ID, etc. of person registering the child



### PROOF OF SAISD RESIDENCE

Utility or phone bill, lease agreement, etc.



### CHILD'S BIRTH CERTIFICATE

Or other proof of child's identity and age



### IMMUNIZATION RECORDS

Child's up-to-date records needed for in-person learning



### CHILD'S SOCIAL SECURITY CARD

If available (*preferred, but not required*)



### ACADEMIC RECORDS

Recent report card, withdrawal form, transcript, etc.  
(*preferred, but not required*)

## REGISTRATION DOCUMENTS FOR RETURNING STUDENTS:



### PROOF OF SAISD RESIDENCE

Utility or phone bill, lease agreement, etc.



### IMMUNIZATION RECORDS

Child's updated immunization records, dependent on grade level

Families who do not have their own homes or have been displaced and students who are in foster or kinship care may register without certain documents. Contact **Family & Student Support Services at (210) 554-2635** for more information.

# Early Education Options



**SAN ANTONIO  
INDEPENDENT SCHOOL DISTRICT**

**APPLY NOW!**

## A Family of Schools for 3- & 4-Year-Olds

Pre-K sets the stage for your child's future success in school.

Our Early Childhood Education Program has strong academic options for 3- and 4-year-olds through Pre-Kindergarten and Head Start programs. From free meal services to transportation, free technology to health care, we have your family needs covered.



Academic, physical and social emotional development



Hands-on learning environment



State-certified teachers



Programs for children with disabilities



Bilingual instruction options.



In Person



Full Day Pre-Kindergarten  
3 and 4 Programs



After School Care\*  
\*At select sites

Have questions or ready to register? Call **(210) 554-2660** or **(210) 554-2410** for more information. Learn more and discover your options and eligibility at [saisd.net/earlychildhood](https://saisd.net/earlychildhood)

# TEA Accountability Rating System

Due to the pandemic, all districts and campuses in Texas received a rating of **Not Rated: Declared State of Disaster** for the 2019-20 school year. Ratings in this enrollment guide reflect the 2018-19 Texas Education Agency (TEA) Accountability Rating System, in which both districts and campuses received A-F ratings.

SAISD earned a "B" in 2019. Individual school ratings are indicated in the school descriptions in this enrollment guide.

## Distinction Designations

Schools that received A-D ratings for 2019 were eligible for special honors called Distinctions.

There were seven possible distinctions:

- Academic Achievement in English Language Arts (ELA)/ Reading
- Academic Achievement in Mathematics
- Academic Achievement in Science
- Academic Achievement in Social Studies
- Top 25 Percent: Student Progress
- Top 25 Percent: Closing Performance Gaps
- Postsecondary Readiness

For 2019, 42 SAISD schools earned one or more Distinctions. Distinctions earned by SAISD schools in 2019 are indicated in the school descriptions of the enrollment guide.





# Learn About Our Schools



# Graduation Plans



*Preparing for your college and career success after high school. All plans require a solid foundation.*

## DISTINGUISHED LEVEL OF ACHIEVEMENT

Requires Algebra II, with an endorsement and the Foundation High School Program requirements (26 credits).

Students must graduate at the Distinguished Level of Achievement to be **eligible** for automatic admission to public state colleges and universities through the Top 10 Percent rule.

FOUNDATION + ENDORSEMENT PLAN

### STEM



### Business & Industry



### Public Services



### Arts & Humanities



### Multi-disciplinary



**+ 1 advanced math + 1 advanced science + 2 additional elective credits**

**26 CREDITS**

Requires Algebra II

**26 CREDITS**

**26 CREDITS**

**26 CREDITS**

**26 CREDITS**

## FOUNDATION HIGH SCHOOL PROGRAM

**Core requirements (22 Credits):** 4 credits in English, 3 credits in math, 3 credits in science, 3 credits in social studies, 2 credits in foreign language, 1 credit in fine arts, 1 credit in PE, and 5 elective credits

## CHOOSE ONE OR MORE ENDORSEMENTS



**STEM (Science, Technology, Engineering and Mathematics)** - This path includes courses directly related to Career and Technical Education courses related to STEM. Students may **earn a STEM endorsement** by successfully completing Algebra II and three additional credits from no more than two of the following categories: the **STEM** CTE career cluster, to include Cybersecurity, Biomedical Science, or Engineering, computer science courses that may satisfy a **STEM endorsement**, mathematics courses beyond Algebra II, or science courses.



**Business and Industry** - This path includes courses directly related to Business, Marketing & Finance, Agriculture, Food and Natural Resources, Architecture and Construction, Hospitality and Tourism, Information Technology, Manufacturing, and Transportation and Distribution.



**Public Service** - This path includes courses directly related to health sciences and occupations, education and training, law and public service, human services, and Junior Reserve Officer Training Corps (JROTC).



**Arts and Humanities** - This path includes courses directly related to political science, world languages, cultural studies, English literature, history and fine arts (Band, Choir, Orchestra, Mariachi, Theatre, Visual Arts and Dance).



**Multidisciplinary** - This path includes courses from the curriculum of each endorsement area and credits in a variety of advanced courses from multiple content areas sufficient to complete the distinguished level of achievement under the foundation high school program.

Performance Acknowledgments note outstanding achievement in specific areas. These distinctions will be included in your high school diploma and better position you for successful entry into college and/or the workforce. See your high school counselor for details.

# High Schools

**High Schools** serve students in grades 9-12 and award graduating seniors with their diplomas. Most high schools offer the opportunity to earn college credits, certifications and industry experience.

---

ADVANCED LEARNING ACADEMY

BRACKENRIDGE HIGH SCHOOL

BURBANK HIGH SCHOOL

CAST MED HIGH SCHOOL

CAST TECH HIGH SCHOOL

COOPER ACADEMY AT NAVARRO

EDISON HIGH SCHOOL

FOX TECH HIGH SCHOOL

HEALY-MURPHY CENTER

HIGHLANDS HIGH SCHOOL

SAM HOUSTON HIGH SCHOOL

JEFFERSON HIGH SCHOOL

LANIER HIGH SCHOOL

PHOENIX MIDDLE COLLEGE

ST. PHILIP'S EARLY COLLEGE HIGH SCHOOL

TEXANS CAN ACADEMY AT HIGHLANDS HIGH SCHOOL

TRAVIS EARLY COLLEGE HIGH SCHOOL

YOUNG MEN'S LEADERSHIP ACADEMY

YOUNG WOMEN'S LEADERSHIP ACADEMY

---



# Advanced Learning Academy

in partnership with:



637 N. Main Avenue, San Antonio, TX 78205 (4-12) • (210) 738-9763 • [www.saisd.net/ala](http://www.saisd.net/ala)

At Advanced Learning Academy, we foster a depth of thinking through problem-solving, creative design and real-world applications as students develop deep content knowledge and cutting-edge learning skills to prepare them for any and all futures that they can envision.

- **ACADEMIC HIGHLIGHTS:** Advanced Placement (AP) (offerings vary by campus), Design, Spanish, Master Teacher Tutorials, Social and Emotional Learning, STEM/STEAM, University of Texas Dual Credit OnRamps Courses, African-American and Mexican-American Studies, Internship & Career Exploration
- **FINE ARTS OFFERINGS:** Visual Arts, Band, Dance, Mariachi, Theatre
- **EXTRACURRICULAR HIGHLIGHTS:** Academic Decathlon/Octathlon, Math Club, Model United Nations, Book Club, Gardening Club, Spanish Club, Senate, Student Advisory Board, Student Council/Government, Makerspace Sessions, Pep Squad, Robotics Club/Team
- **ATHLETIC OFFERINGS:** **Girls:** Volleyball, Basketball, Track, Soccer, Tennis, Golf, Cross Country, Swimming/Diving • **Boys:** Basketball, Track, Soccer, Tennis, Golf, Cross Country, Swimming/Diving
- **COMMUNITY PARTNERS:** Art Pace, Bibliotech, Briscoe Art Museum, CAST Network, City Year, Curiosity Club, DoSeum, Esperanza, Gemini Ink, Google Fiber, Kingdom for Kids, Mitchell Lake, San Antonio Museum of Art, San Antonio Public Library, San Antonio River Authority, SAWS, Texas A&M San Antonio, Trinity University, Wolf Trap, Witte Museum, YMCA

**Grades: PK – 12**

**2019 State Accountability: B Rated**

**Distinction Designations:** Reading, Science, Social Studies, Post Secondary Readiness

**School Start/End Times:**

**7:55 a.m. - 4:00 p.m.**

Earliest Drop-off: 7:30 a.m.

Latest Pick-up: 4:00 p.m.

(Extended Day 6 p.m.)

**School Uniform Color:**

Hunter Green, White

**Choice Program Specialization:**

Accelerated Learning,  
Project-Based Learning



# George W. Brackenridge High School

400 Eagleland Drive, San Antonio, TX 78210 • (210) 228-1200 • [saisd.net/brackenridgehs](http://saisd.net/brackenridgehs)

At Brackenridge High School, we offer the best of both worlds with our Early College High School and traditional comprehensive high school combination. We also feature our Media Film Institute magnet and a Dual Language pathway.

- **ACADEMIC HIGHLIGHTS:** Advanced Placement (AP) (offerings vary by campus), Advancement Via Individual Determination (AVID), Audio & Video Production, Early College High School, Graphic Design & Illustration, Dual Language
- **SPECIALIZED CLASSROOMS:** Alternate Curriculum Environment (ACE)
- **FINE ARTS OFFERINGS:** Visual Arts, Band, Choir, Dance, Mariachi, Orchestra, Theatre
- **EXTRACURRICULAR HIGHLIGHTS:** DECA (Entrepreneurship), Cheer/Pom Squad, Drama/Theatre Club and other opportunities, Pep Squad, SkillsUSA
- **ATHLETIC OFFERINGS:** **Girls:** Volleyball, Basketball, Track, Soccer, Softball, Tennis, Golf, Cross Country, Swimming/Diving • **Boys:** Basketball, Track, Soccer, Baseball, Tennis, Golf, Cross Country, Swimming/Diving
- **COMMUNITY PARTNERS:** Big Brothers Big Sisters, Cafe College, Alumni Association, San Antonio Education Partnership, St. Philip's College, Trinity Advisor, King William Neighborhood Associate, Project STAY

**Grades: 9 – 12**

**2019 State Accountability: B Rated**

**Distinction Designations:** Science, Social Studies, Academic Growth, Post Secondary Readiness

**School Start/End Times:**

**8:45 a.m. - 4:15 p.m.**

Earliest Drop-off: 8 a.m.

Latest Pick-up: 4:30 p.m.

**School Uniform Color:**

Black, Purple, White, Grey

**Choice Program Specialization:**

Media & Film Institute,  
Early College High School



# Luther Burbank High School

1002 Edwards Street, San Antonio, TX 78204 • (210) 228-1210 • [saisd.net/burbankhs](http://saisd.net/burbankhs)

At Luther Burbank High School, all students are International Baccalaureate students! Our students benefit from participation in our IB World School programs. The IB experience creates life-long learners who are prepared to participate in college, the military, or career opportunities.

- **ACADEMIC HIGHLIGHTS:** International Baccalaureate (IB), Advanced Placement (AP) (offerings vary by campus), Dual Language (9), Agriculture, Culinary, Dual Credit, Cosmetology, Law Enforcement
- **SPECIALIZED CLASSROOMS:** Alternate Curriculum Environment (ACE)
- **FINE ARTS OFFERINGS:** Visual Arts, Band, Choir, Dance, Mariachi, Orchestra, Theatre, Film
- **EXTRACURRICULAR HIGHLIGHTS:** Academic Decathlon, National Honor Society, Best Buddies, Student Council, Future Farmers of America, Interact Club, National Spanish Honor Society, Art Club, Chess Club
- **ATHLETIC OFFERINGS:** **Girls:** Volleyball, Basketball, Track, Soccer, Softball, Tennis, Golf, Cross Country, Swimming/Diving, Wrestling • **Boys:** Basketball, Track, Soccer, Baseball, Tennis, Golf, Cross Country, Swimming/Diving, Wrestling
- **COMMUNITY PARTNERS:** San Antonio Education Partnership, Upward Bound, Café College, Palo Alto College, Project Stay, St. Philip's College

in partnership with:



**Grades: 9 – 12**

**2019 State Accountability: C Rated**

**Distinction Designations:** Science, Social Studies, Post Secondary Readiness

**School Start/End Times:**

**8:45 a.m. - 4:15 p.m.**

Earliest Drop-off: 8 a.m.

Latest Pick-up: 4:45 p.m.

**School Uniform Color:**

Orange, Black, White

**Choice Program Specialization:**

International Baccalaureate







## CAST Med High School

in partnership with:



2601 Louis Bauer Drive, San Antonio, TX 78235 • (210) 228-3380 • [saisd.net/castmed](http://saisd.net/castmed)

At CAST Med High School, we add to the pipeline of much-needed doctors, nurses, pharmacists, dentists, and researchers in the San Antonio area with students wishing to improve the health of our community. We offer an emphasis on medicine and biomedical research.

- **ACADEMIC HIGHLIGHTS:** Advanced Placement (AP) (offerings vary by campus), Advancement Via Individual Determination (AVID), Dual Credit, Health Science, Pre-AP offerings, Dual Language
- **FINE ARTS OFFERINGS:** Visual Arts, Mariachi
- **EXTRACURRICULAR HIGHLIGHTS:** Spelling Bee, Math Club, Reading Club, Art Club and opportunities, HOSA (Health Sciences), National Honor Society, Spanish Club, Yearbook
- **ATHLETIC OFFERINGS:** Students may participate in Athletics at their home school according to address
- **COMMUNITY PARTNERS:** UTSA, UIW, UT Health San Antonio, Alamo Colleges, Bexar County Medical Society, Brooks, Children's Hospital of San Antonio CHRISTUS Health, Mission Trail Baptist Hospital, University Health System, Brooks, Peripheral Vascular Associates, SAVE Clinic, SA Food Bank, San Antonio State Hospital, Southwest Research Institute, Patient Institute, SA Metro Health, Mind Science, Chef SA, HEB, Physicians Premier, Universidad de las Americas Puebla (UDLAP)

**Grades: 9 – 11** (expanding to 9-12)

**2019 State Accountability:**  
**N/A**

**School Start/End Times:**

**8:30 a.m. - 4:05 p.m.**

Earliest Drop-off: 8 a.m.

Latest Pick-up: 5:40 p.m.

**School Uniform Color:**

Blue, White, Gray and any College T-Shirt or CAST Tech Spirit Shirt

**Choice Program Specialization:**

Medicine, Public Health,  
Biomedical Research



## CAST Tech High School

in partnership with:



637 North Main Avenue, San Antonio, TX 78205 • (210) 554-2700 • [saisd.net/casttech](http://saisd.net/casttech)

At CAST Tech, our curriculum embeds business and technology across content areas with specialized course pathways. Students interact regularly with industry partners to promote relevance to learning via mentoring, job shadowing and internships.

- **ACADEMIC HIGHLIGHTS:** Business/Business Management, Computer Science, Cybersecurity, Entrepreneurship; Dual Credit, Graphic Design & Illustration, User Experience
- **FINE ARTS OFFERINGS:** Band, Dance, Mariachi, Theatre
- **EXTRACURRICULAR HIGHLIGHTS:** Dance Team/Club opportunities, National Honor Society, Unity Club, Yearbook, CyberPatriots, Mentoring Program with Industry Professionals, Video Game Club
- **ATHLETIC OFFERINGS:** **Girls:** Volleyball, Basketball, Track, Soccer, Tennis, Golf, Cross Country, Swimming/Diving • **Boys:** Basketball, Track, Soccer, Tennis, Golf, Cross Country, Swimming/Diving
- **COMMUNITY PARTNERS:** Girls Inc., She Code Connect, Say Si, San Antonio Public Library, Summer of Service (SOS), AT&T, City of San Antonio, Frost Bank, Geekdom, HEB, Jungle Disk, Rackspace, Tech Bloc, University Health System, The University of Texas at San Antonio, USAA, Whataburger, Edwards Aquifer Authority

**Grades: 9 – 12**

**2019 State Accountability:**  
**B Rated**

**Distinction Designations:**  
Post Secondary Readiness

**School Start/End Times:**

**8:30 a.m. - 4:00 p.m.**

Earliest Drop-off: 7:45 a.m.

Latest Pick-up: 4:30 p.m.

**School Uniform Color:**

White, Black, Grey, Orange and any College T-Shirt or CAST Tech Spirit Shirt

**Choice Program Specialization:**

Computer Science, Information  
Technology, User Experience, Business



## James Fenimore Cooper Academy at Navarro

623 S. Pecos Street, San Antonio, TX 78207 • (210) 438-6810 | [www.saisd.net/cooperacademy](http://www.saisd.net/cooperacademy)

We provide students with the opportunity to earn their high school diploma. We provide services to students between the ages of 15 and 25.

- **ACADEMIC HIGHLIGHTS:** Dual credit, Industry certifications, Job training, CNA, AP and 2D Art, Edgenuity Credit Attainment and Credit Recovery, Pre-AP,

Advanced Placement (AP) (offerings vary by campus)

- **EXTRACURRICULAR HIGHLIGHTS:** Students may participate in UIL activities at their home school according to address.
- **ATHLETIC OFFERINGS:** Students may participate in Athletics at their home school according to address.

**Grades: 9 – 12**

**2019 State Accountability:**  
**Rated Below C**

**School Start/End Times:**

**8:30 a.m. - 4:00 p.m.**

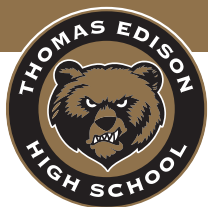
Earliest Drop-off: 7:45 a.m.

Latest Pick-up: 4:30 p.m.

**School Uniform Color:**

No Uniform





## Thomas Edison High School

701 Santa Monica Drive, San Antonio, TX 78212 • (210) 738-9720 • [saisd.net/edisonhs](http://saisd.net/edisonhs)

At Edison High School, we provide a unique learning opportunity for students through our endorsements of business & industry, public service (law, fire, teaching), STEM, health professions, multi-disciplinary studies, and our Health Professions Magnet Program.

- **ACADEMIC HIGHLIGHTS:** Advanced Placement (AP) (offerings vary by campus), School of Business P-TECH, Firefighter, Health Science, Law Enforcement, Dual Language (9-11)
- **SPECIALIZED CLASSROOMS:** Alternate Curriculum Environment (ACE)
- **FINE ARTS OFFERINGS:** Visual Arts, Band, Choir, Dance, Mariachi, Theatre
- **EXTRACURRICULAR HIGHLIGHTS:** Dance Team/Club opportunities, Drama/Theatre Club opportunities
- **ATHLETIC OFFERINGS:** **Girls:** Volleyball, Basketball, Track, Soccer, Softball, Tennis, Golf, Cross Country, Swimming/Diving • **Boys:** Basketball, Track, Soccer, Baseball, Tennis, Golf, Cross Country, Swimming/Diving
- **COMMUNITY PARTNERS:** Big Brothers Big Sisters

**Grades: 9 – 12**

**2019 State Accountability: C Rated**

**Distinction Designations:** Science, Social Studies, Post Secondary Readiness

**School Start/End Times:**

**8:45 a.m. - 4:15 p.m.**

Earliest Drop-off: 7:30 a.m.

Latest Pick-up: 5:30 p.m.

**School Uniform Color:**

White, Black, College T-Shirts

**Choice Program Specialization:**

Health Professions, Fire, Business P-TECH



## Louis W. Fox Tech High School

637 North Main Avenue, San Antonio, TX 78205 • (210) 738-9730 • [saisd.net/foxtechhs](http://saisd.net/foxtechhs)

At Fox Tech, students who are interested in pursuing careers in health and law professions receive focused instruction. We now offer a Healthcare Pathways in Technology Early College High School (H-TECH) within our healthcare magnet.

- **ACADEMIC HIGHLIGHTS:** Dual Credit, Health Science, Law, Nursing (CNA and/or LVN Certification), Nursing H-TECH
- **FINE ARTS OFFERINGS:** Visual Arts, Band, Dance, Mariachi
- **EXTRACURRICULAR HIGHLIGHTS:** Mock Trial Team, Speech/Debate Team, HOSA (Health Sciences), SkillsUSA, Youth in Government
- **ATHLETIC OFFERINGS:** **Girls:** Volleyball, Basketball, Track, Soccer, Tennis, Golf, Cross Country, Swimming/Diving • **Boys:** Basketball, Track, Soccer, Tennis, Golf, Cross Country, Swimming/Diving
- **COMMUNITY PARTNERS:** Goodwill, YMCA, Metropolitan Methodist, University Health System, San Antonio College, The University of Texas at San Antonio, The University of Texas at Austin

**Grades: 9 – 12**

**2019 State Accountability: A Rated**

**Distinction Designations:** Reading, Math, Science, Social Studies, Academic Growth, Closing Performance Gaps, Post Secondary Readiness

**School Start/End Times:**

**8:30 a.m. - 4:00 p.m.**

Earliest Drop-off: 7:30 a.m.

Latest Pick-up: 4:30 p.m. (Extended Day 6 p.m.)

**School Uniform Color:**

Black, Red

**Choice Program Specialization:**

Health Professions, Law Professions, Nursing H-TECH



## Healy-Murphy Center

618 Live Oak Street, San Antonio, TX 78202 • High School and GED: (210) 223-2944

Child Development Center: (210) 224-9569 • [www.healymurphy.org/](http://www.healymurphy.org/)

The mission of Healy-Murphy Center is to provide compassionate service to youth-in-crisis by focusing on individualized education in a non-traditional setting, early childhood development and essential support services.

- **ACADEMIC HIGHLIGHTS:** Self-paced classes, Flexible schedules, Reading skills development, Career guidance, Daycare for parenting students, Health and wellness clinic, Support groups, Job placement assistance
- **FINE ARTS OFFERINGS:** Art and Photography
- **ATHLETIC OFFERINGS:** Basketball

**Grades: 9 – 12**

**2019 State Accountability: Rated Below C**

**School Start/End Times:**

**8:06 a.m. - 3:06 p.m.**



## Highlands High School

3118 Elgin Avenue, San Antonio, TX 78210 • (210) 438-6800 • [www.saisd.net/highlandshs](http://www.saisd.net/highlandshs)

At Highlands High School, students enter a community that blends 60 years of tradition and pride. We offer more than 30 extracurricular activities for student involvement. Our Mighty Owls invite you to become part of our legacy.

- **ACADEMIC HIGHLIGHTS:** Advanced Placement (AP) (offerings vary by campus), Dual Credit, Dual Enrollment, Engineering, JROTC (academic and extracurricular offering), Manufacturing, Welding, P-TECH, Dual Language (9), Regional Day School Program for the Deaf (RDSPD)
- **SPECIALIZED CLASSROOMS:** Alternate Curriculum Environment (ACE), Safe Optimal Learning Environment (SOLE)
- **FINE ARTS OFFERINGS:** Visual Arts, Band, Choir, Dance, Mariachi, Orchestra, Theatre
- **EXTRACURRICULAR HIGHLIGHTS:** Mock Trial Team, Public Safety Cadets, National Honor Society, National Spanish Honor Society/La Sociedad Honoraria Hispánica, Engineering Club, Girl Scouts, Robotics Club, CyberPatriot, Student Council
- **ATHLETIC OFFERINGS:** **Girls:** Volleyball, Basketball, Track, Soccer, Softball, Tennis, Golf, Cross Country, Swimming/Diving, Wrestling • **Boys:** Basketball, Track, Soccer, Baseball, Tennis, Golf, Cross Country, Swimming/Diving, Wrestling
- **COMMUNITY PARTNERS:** Communities in Schools, Upward Bound Math and Science Program, Project Stay, UT Outreach San Antonio

**Grades: 9 – 12**

**2019 State Accountability: C Rated**

**Distinction Designations:**  
Post Secondary Readiness

**School Start/End Times:**  
**8:40 a.m. - 4:15 p.m.**  
Earliest Drop-off: 8:00 a.m.  
Latest Pick-up: 4:30 p.m.

**School Uniform Color:**  
White, Gray, Maroon; college shirts, school spirit shirts may be worn any day

**Choice Program Specialization:**  
Computer Science, Aero/Eng/  
Manufacturing/Welding P-TECH



## Sam Houston High School

4635 E. Houston Street, San Antonio, TX 78220 • (210) 978-7900 • [www.saisd.net/samhoustonhs](http://www.saisd.net/samhoustonhs)

At Sam Houston High School, we are committed to building positive relationships, and implementing high-quality education. All our students are equipped to succeed personally and professionally to become contributing members of society.

- **ACADEMIC HIGHLIGHTS:** Culinary, Engineering, JROTC (academic and extracurricular offering), Cyber P-TECH, Dual Enrollment
- **SPECIALIZED CLASSROOMS:** Alternate Curriculum Environment (ACE)
- **FINE ARTS OFFERINGS:** Visual Arts, Band, Choir, Dance, Theatre
- **EXTRACURRICULAR HIGHLIGHTS:** Academic Decathlon/Octathlon, Chef/Cooking opportunities, Student Council/Government, Mu Alpha Theta, Robotics, and CyberPatriots
- **ATHLETIC OFFERINGS:** **Girls:** Volleyball, Basketball, Track, Soccer, Softball, Golf, Cross Country • **Boys:** Football, Basketball, Track, Soccer, Baseball, Golf, Cross Country
- **COMMUNITY PARTNERS:** Accenture Federal Services, DC Industries, MIMS Institute Fellows, Tech Skills on Wheels, Omega Psi Phi, Communities In Schools, City Year, Big Brothers Big Sisters, St. Philip's College, San Antonio EDF

**Grades: 9 – 12**

**2019 State Accountability: C Rated**

**Distinction Designations:**  
Reading, Science

**School Start/End Times:**  
**8:45 a.m. - 4:15 p.m.**  
Earliest Drop-off: 8:00 a.m.  
Latest Pick-up: 4:30 p.m.

**School Uniform Color:**  
White, Green, Orange; college shirts, school spirit shirts may be worn any day

**Choice Program Specialization:**  
CyberSecurity P-TECH



## Thomas Jefferson High School

723 Donaldson Avenue, San Antonio, TX 78201 • (210) 438-6570 • [www.saisd.net/jeffersonhs](http://www.saisd.net/jeffersonhs)

At Thomas Jefferson High School, we are part of a global community offering the International Baccalaureate in 147 different countries. Our unique and innovative approach to learning means both students and teachers benefit from being a part of an unparalleled global network that builds students' ability to learn well beyond the classroom.

- **ACADEMIC HIGHLIGHTS:** International Baccalaureate (IB), Advanced Placement (AP), Advancement Via Individual Determination (AVID), Dual Credit, Dual Language (9), JROTC (academic and extracurricular offering), Architecture, Animation, Business Mgmt, Construction Mgmt, Criminal Justice, Education, Interior Design, Media (AV Production), STEM Computer Science, STEM Health Science
- **SPECIALIZED CLASSROOMS:** Alternate Curriculum Environment (ACE)
- **FINE ARTS OFFERINGS:** Visual Arts, Band, Choir, Dance, Mariachi, Orchestra, Theatre, Guitar
- **EXTRACURRICULAR HIGHLIGHTS:** Model United Nations, Police Explorers, Dance, E-Gaming Club, National Spanish Honor Society/La Sociedad Honoraria Hispánica, Barbeque Club, JROTC, World Famous Lassos, Lariets, Cheer, Senate, MJR Society, Student Council
- **ATHLETIC OFFERINGS:** **Girls:** Volleyball, Basketball, Track, Soccer, Softball, Tennis, Golf, Cross Country, Swimming/Diving • **Boys:** Basketball, Track, Soccer, Baseball, Tennis, Golf, Cross Country, Swimming/Diving
- **COMMUNITY PARTNERS:** Big Brothers Big Sisters, Communities in Schools, Café College, Project Stay

in partnership with:



**Grades: 9 – 12**

**2019 State Accountability: C Rated**

**Distinction Designations:**  
Reading, Social Studies,  
Academic Growth

**School Start/End Times:**  
**8:45 a.m. - 4:15 p.m.**

**School Uniform Color:**  
White, Red, Royal Blue



**Choice Program Specialization:**  
International Baccalaureate



# Sidney Lanier High School

1514 W. César E. Chávez, San Antonio, TX 78207 • (210) 978-7910 • [www.saisd.net/lanierhs](http://www.saisd.net/lanierhs)

At Sidney Lanier High School, we believe in high expectations with strong student supports, a climate of respect and caring, learning that is rigorous, relevant, and engaging, and a safe learning environment. We provided advanced and specialized curriculum and training in Architecture, Automotive, Construction Management, and

Alternative Energy. Interested students can join our magnet and P-TECH programs.

- **ACADEMIC HIGHLIGHTS:** Dual Credit, Dual Language (9-11), Project Based Learning, Architecture Design, Construction Management/Technology, Construction Science P-TECH, Automotive Tech
- **SPECIALIZED CLASSROOMS:** Alternate Curriculum Environment (ACE)
- **FINE ARTS OFFERINGS:** Visual Arts, Band, Choir, Dance, Mariachi, Orchestra, Theatre
- **EXTRACURRICULAR HIGHLIGHTS:** ACE Mentor Program (Architecture, Construction, Engineering), Student Advisory Board, Robotics Club/Team, SkillsUSA, Cheer/Pom Squad, Drama/Theatre Club opportunities, Pep Squad
- **ATHLETIC OFFERINGS:** **Girls:** Volleyball, Basketball, Track, Soccer, Softball, Tennis, Golf, Cross Country, Swimming/Diving • **Boys:** Basketball, Track, Soccer, Baseball, Tennis, Golf, Cross Country, Swimming/Diving
- **COMMUNITY PARTNERS:** Communities in Schools, Ernst & Young College Map, The University of Texas at Austin Outreach, St. Mary's Law School, City Year, UTSA College of Architecture, Construction and Planning, Girl Scouts of America, Children's Bereavement Center, Culinary Institute of America

**Grades: 9 – 12**

**2019 State Accountability:**

**C Rated**

**Distinction Designations:**

Social Studies,  
Post Secondary Readiness

**School Start/End Times:**

**8:45 a.m. - 4:15 p.m.**

Earliest Drop-off: 8:15 a.m.

Latest Pick-up: 4:30 p.m.

**School Uniform Color:**

Blue, White, Gray, Black

**Choice Program Specialization:**

Automotive Technology, Architecture,  
Construction Science P-TECH



# Phoenix Middle College

St. Philip's College Southwest Campus • 800 Quintana Road, San Antonio, TX 78211 • (210) 486-7132  
[www.saisd.net/phoenixmiddlecollege](http://www.saisd.net/phoenixmiddlecollege)

At Phoenix Middle College, we provide high school students with the opportunity to earn college credit and work toward an industry certification during their last two years of high school. Students leave Phoenix able to earn an aircraft structures mechanic certification, earning a median wage of \$54,731 yearly (Payscale.com).

- **ACADEMIC HIGHLIGHTS:** Dual credit, Industry certifications, Job training. **Popular programs:** Aircraft Mechanics, Diesel and Automotive Technology, Auto Collision, Welding, Construction-Electrical, HVAC, Plumbing, Power Generation (Alternative "Green" Energy)
- **EXTRACURRICULAR HIGHLIGHTS:** Students may participate in UIL activities at their home school according to address.
- **ATHLETIC OFFERINGS:** Students may participate in Athletics at their home school according to address.

**Grades: 11 – 12**

**2019 State Accountability:**

Students accountability is linked to  
Cooper Academy at Navarro

**School Start/End Times:**

**8:45 a.m. - 3:30 p.m.**

Earliest Drop-off: 8:00 a.m.

Latest Pick-up: 4:30 p.m.

**School Uniform Color:**

No uniform

**Choice Program Specialization:**

Skilled in-demand occupations



# St. Philip's Early College High School

1801 MLK Drive, San Antonio, TX 78203 • (210) 486-2406 • [www.saisd.net/stphilipsechs](http://www.saisd.net/stphilipsechs)

At St. Philip's College Early College, our nationally ranked program offers the student who is at-risk or under-represented in college, the chance to earn an Associate of Arts or Associate of Applied Science degree.

- **ACADEMIC HIGHLIGHTS:** Automotive Technology/Auto Collision Repair, Culinary, Cybersecurity, Early College High School, Nursing (CNA and/or LVN Certification), Phlebotomy Certification available
- **EXTRACURRICULAR HIGHLIGHTS:** National Honor Society, Student Council/Government, Weightlifting, Yearbook. Students may participate in the clubs, sports, and organizations of St. Philip's College.
- **ATHLETIC OFFERINGS:** Students may participate in Athletics at their home school according to address. Students may play collegiate sports based on college rules and standing.
- **COMMUNITY PARTNERS:** Holy Redeemer Church, Jason Deli, Subway, Office Depot, St. Philip's College

**Grades: 9 – 12**

**2019 State Accountability:**

**A Rated**

**Distinction Designations:**

Closing Performance Gaps,  
Post Secondary Readiness

**School Start/End Times:**

**9:00 a.m. - 4:30 p.m.**

Earliest Drop-off: 7:30 a.m.

Latest Pick-up: 5:00 p.m. (Extended Day 6 p.m.)

**School Uniform Color:**

White, Blue, Orange, Light Blue

**Choice Program Specialization:**

Early College High School



# Texans Can Academy at Highlands High School

in partnership with:



3118 Elgin Avenue, San Antonio, TX 78210 • (210) 354-9340  
[www.texanscan.org/schools-and-programs/highlands/](http://www.texanscan.org/schools-and-programs/highlands/)

This specialized school is for students who are behind their cohorts one or more years and are interested in going into a program with more extensive support to get back on track to graduate.

- **ACADEMIC HIGHLIGHTS:** Half day scheduling, Social and Emotional Learning, Credit recovery
- **EXTRACURRICULAR HIGHLIGHTS:** Students may participate in UIL activities at Highlands High School.
- **ATHLETIC OFFERINGS:** Students may participate in Athletics at their home school according to address.
- **COMMUNITY PARTNERS:** Graduation Alliance, Hope House Ministries, Baylor Scott & White

**Grades: 9 – 12**

**2019 State Accountability:**  
**Rated Below C**

**Morning Session**  
7:45 a.m. - 11:54 a.m.

**Afternoon Session**  
12:40 p.m. - 4:39 p.m.

**School Uniform Color:**  
Maroon, White, Gray or Black  
Texans Can polo, Khaki or Black pants



## William B. Travis Early College High School

1915 N. Main Avenue, San Antonio, TX 78212 • (210) 738-9830 | [www.saisd.net/travisechs](http://www.saisd.net/travisechs)

At Travis Early College High School, students may attain their high school diploma while earning an associate degree and/or up to 60 college hours. Students receive valuable exposure to college life and create a seamless transition from high school to post-secondary education.

Advancement Via Individual Determination (AVID), Dual Credit, Early College High School

- **FINE ARTS OFFERINGS:** Visual Arts, Theatre
- **EXTRACURRICULAR HIGHLIGHTS:** Academic Decathlon/Octathlon, Model United Nations, Mu Alpha Theta Math Honors Club, National Hispanic Honor Society, National Honor Society
- **ATHLETIC OFFERINGS:** Students may participate in Athletics at their home school according to address
- **COMMUNITY PARTNERS:** San Antonio College (ACCD)

**Grades: 9 – 12**

**2019 State Accountability:**  
**A Rated**

**Distinction Designations:**  
Reading, Math, Closing Performance Gaps, Post Secondary Readiness

**School Start/End Times:**  
**8:00 a.m. - 3:30 p.m.**  
Earliest Drop-off: 7:15 a.m.  
Latest Pick-up: 5:00 p.m.

**School Uniform Color:**  
White, Navy Blue

**Choice Program Specialization:**  
Early College High School



## Young Men's Leadership Academy at Phillis Wheatley

415 Gabriel Street, San Antonio, TX 78202 • (210) 354-9652 | [www.saisd.net/ymla](http://www.saisd.net/ymla)

At Young Men's Leadership Academy, we are San Antonio's first all-boys public school offering a model of education that is backed by research indicating that boys and girls learn differently. YMLA helps boys achieve their highest potential by setting high expectations and emphasizing character, leadership and discipline.

campus), Dual Credit, JROTC (academic and extracurricular offering), Master Teacher Tutorials, Project Based Learning, Latin, AP Capstone, Apple Tech Certification, Minecraft PBL, Daily Meditation and Assembly, Single Gender

- **FINE ARTS OFFERINGS:** Visual Arts, Band, Choir, Theatre
- **EXTRACURRICULAR HIGHLIGHTS:** Book Club, Boy Scouts, Coding, Drama/Theatre Club opportunities, Gardening Club, National Honor Society, Student Advisory Board, Student Council/Government, Social Justice
- **ATHLETIC OFFERINGS:** Boys: Football, Basketball, Track, Cross Country
- **COMMUNITY PARTNERS:** Big Brothers, Omega Psi Phi Mentoring, Classical Society

**Grades: 4 – 12**

**2019 State Accountability:**  
**B Rated**

**Distinction Designations:**  
Reading, Math, Science, Social Studies, Academic Growth, Closing Performance Gaps, Post Secondary Readiness

**School Start/End Times:**  
**8:15 a.m. - 4:00 p.m.**  
Earliest Drop-off: 7:30 a.m.  
Latest Pick-up: 4:15 p.m. (Extended Day 6 p.m.)

**School Uniform Color:**  
White, Purple

**Choice Program Specialization:**  
Single Gender, Leadership





# Young Women's Leadership Academy

in partnership with:



2123 W. Huisache Avenue, San Antonio, TX 78201 • (210) 438-6525 | [www.saisd.net/ywla](http://www.saisd.net/ywla)

At the Young Women's Leadership Academy, students engage in a rigorous, college-preparatory curriculum with the understanding that 100 percent of students will graduate prepared to enroll in and graduate from college and be active leaders in their community.

• **ACADEMIC HIGHLIGHTS:** Advanced Placement (AP) (offerings vary by campus), Dual Credit, Engineering/Computer Science/Robotics, Civics/Creative Writing/Critical Discourse, SEL, Single Gender

• **FINE ARTS OFFERINGS:** Visual Arts, Choir, Dance, Theatre

• **EXTRACURRICULAR HIGHLIGHTS:** Academic Decathlon, Debate, U of H Math Team, FIRST Robotics, Drama Club, Elite Steppers, Young Poets Society, Girl Up, Students Demand Action, Student Council, Gamma Sigma Girls, National Honor Society, Kindness Rocks Club

• **ATHLETIC OFFERINGS:** Girls: Volleyball, Basketball, Track, Soccer, Tennis, Cross Country

• **EXTENDED DAY PROVIDER:** YMCA of Greater San Antonio

• **COMMUNITY PARTNERS:** Audubon Society, Young Women's Preparatory Network, The Magik Theatre, Girls Inc., Girls on the Run, NHI, St. Mary's Law School, HEB, Frost Bank, American Heart Association, NCGS, Southwest Research Institute, Bexar County Women's Bar Association, Impact SA, SAWS, UT Health System

**Grades: 6 - 12**

**2019 State Accountability:  
A Rated**

**Distinction Designations:**  
Reading, Math, Science, Social Studies,  
Academic Growth, Closing Performance  
Gaps, Post Secondary Readiness

**School Start/End Times:**  
**8:30 a.m. - 3:45 p.m.**  
Earliest Drop-off: 7:30 a.m.  
Latest Pick-up: 5:00 p.m.

**School Uniform Color:**  
White, Red, Blue, special uniform that  
includes a cardigan, plaid skirt, blouse & tie

**Choice Program Specialization:**  
Single Gender, STEM





# Middle Schools

**Middle Schools** serve students in grades 6-8. Traditional middle schools offer students the broadest range of athletics, fine arts and extracurricular activities.

DAVIS MIDDLE SCHOOL

HARRIS MIDDLE SCHOOL

HOT WELLS MIDDLE SCHOOL

LONGFELLOW MIDDLE SCHOOL

LOWELL MIDDLE SCHOOL

POE MIDDLE SCHOOL

RHODES MIDDLE SCHOOL

ROGERS MIDDLE SCHOOL

TAFOLLA MIDDLE SCHOOL

WHITTIER MIDDLE SCHOOL





## Stonewall Jackson Davis Middle School

4702 E. Houston St., San Antonio, TX 78220 • (210) 978-7920 | [www.saisd.net/davisms](http://www.saisd.net/davisms)

At S.J. Davis Middle School, we've educated generations of family members. We focus on STEM (Science, Technology, Engineering and Math) education as a means of elevating and empowering your child, your family and our community.

• **ACADEMIC HIGHLIGHTS:** Computer Science, Spanish, Dual Language (6)

• **SPECIALIZED CLASSROOMS:** Alternative Curriculum Environment (ACE), Behavior Skills Classroom (BSC), Safe Optimal Learning Environment (SOLE)

• **FINE ARTS OFFERINGS:** Visual Arts, Band, Choir, Theatre

• **EXTRACURRICULAR HIGHLIGHTS:** Spanish Club

• **ATHLETIC OFFERINGS:** **Girls:** Volleyball, Basketball, Track, Soccer, Tennis, Golf, Cross Country • **Boys:** Football, Basketball, Track, Soccer, Tennis, Golf, Cross Country

• **COMMUNITY PARTNERS:** Big Brothers Big Sisters, Communities in Schools, City Year

**Grades: 6 – 8**

**2019 State Accountability:**  
**Rated Below C**

**Distinction Designations:**  
Reading, Science, Academic Growth

**School Start/End Times:**  
**8:35 a.m. - 3:50 p.m.**

Earliest Drop-off: 8:00 a.m.

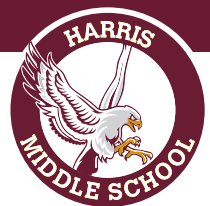
Latest Pick-up: 4:15 p.m.

**School Uniform Color:**

6<sup>th</sup> White | 7<sup>th</sup> Red | 8<sup>th</sup> Black

All grades use Black or Khaki pants

**Choice Program Specialization:**  
STEM, Project-Based Learning



## Joel Chandler Harris Middle School

325 Pruitt Ave., San Antonio, TX 78204 • (210) 228-1220 | [www.saisd.net/harrisms](http://www.saisd.net/harrisms)

At Harris Middle School, we believe in developing internationally minded individuals who are caring, respectful, and mindful of intercultural interactions and differences. Our scholars aspire to become beacons of knowledge and become contributing members of their communities to create a better world.

• **ACADEMIC HIGHLIGHTS:** International Baccalaureate (IB), Dual Language (6), STEM/STEAM, Verizon Innovative Learning School, Dual Language (6)

• **SPECIALIZED CLASSROOMS:** Alternative Curriculum Environment (ACE)

• **FINE ARTS OFFERINGS:** Visual Arts, Band, Choir, Mariachi, Orchestra, Theatre

• **EXTRACURRICULAR HIGHLIGHTS:** Art Club, Peer Mediators, NJHS, Chess Club, Academic UIL, Robotics Club

• **ATHLETIC OFFERINGS:** **Girls:** Volleyball, Basketball, Track, Soccer, Tennis, Golf, Cross Country

**Boys:** Football, Basketball, Track, Soccer, Tennis, Golf, Cross Country

• **EXTENDED DAY PARTNER:** YMCA of Greater San Antonio

• **COMMUNITY PARTNERS:** Big Brothers Big Sisters, Communities in Schools

in partnership with:



**Grades: 6 – 8**

**2019 State Accountability:**  
**Rated Below C**

**School Start/End Times:**  
**8:35 a.m. - 3:50 p.m.**

Earliest Drop-off: 7:45 a.m.

Latest Pick-up: 4:45 p.m.

(Extended Day 6 p.m.)

**School Uniform Color:**

White, Black, Maroon

**Choice Program Specialization:**  
International Baccalaureate,  
STEM, Technology



## Hot Wells Middle School

400 Hot Wells Blvd., San Antonio, TX 78223 • (210) 000-0000 | [www.saisd.net/hotwellsms](http://www.saisd.net/hotwellsms)

At Hot Wells Middle School, we are excited to provide a collaborative learning environment with cross-curricular STEM (Science, Technology, Engineering, and Math) and PBL (Problem Based Learning) integration. We strive to develop strong trusting relationships with our scholars, their families, and the community to ensure high levels of academic achievement and realize their highest potential.

• **ACADEMIC HIGHLIGHTS:** Advancement Via Individual Determination (AVID), AVID Excel, LOTC (academic and extracurricular offering), Middle School Partners Program (credit attainment), Project Based Learning, STEM/STEAM, Dual Language, Technology Applications, Principles of Information Technology (HS Credit), Principles of Audio & Video (HS Credit), Spanish 1 & 2 (HS Credits), Makerspace, Broadcasting Studio

• **SPECIALIZED CLASSROOMS:** Alternative Curriculum Environment (ACE)

• **FINE ARTS OFFERINGS:** Visual Arts, Band, Dance, Mariachi, Theatre

• **EXTRACURRICULAR HIGHLIGHTS:** TBD

• **ATHLETIC OFFERINGS:** **Girls:** Volleyball, Basketball, Track, Soccer, Tennis, Golf, Cross Country • **Boys:** Football, Basketball, Track, Soccer, Tennis, Golf, Cross Country

• **COMMUNITY PARTNERS:** TBD

**Grades: 6 – 8**

**2019 State Accountability:**  
**NA**

**School Start/End Times:**  
**8:35 a.m. - 3:50 p.m.**

Earliest Drop-off: 7:45 a.m.

Latest Pick-up: 4:15 p.m.

**School Uniform Color:**

6<sup>th</sup> Grade: Grey

7<sup>th</sup> Grade: Royal Blue

8<sup>th</sup> Grade: Black



# Henry Wadsworth Longfellow Middle School

in partnership with:



1130 E. Sunshine Drive, San Antonio, TX 78228 • (210) 438-6520 | [www.saisd.net/longfellowms](http://www.saisd.net/longfellowms)

At Longfellow Middle School, we believe in educating students to become thoughtful global citizens. We strive to meet the educational needs of all our students. To this end, we provide ESL, special education and gifted & talented services for our students based on student qualifications and needs.

- **ACADEMIC HIGHLIGHTS:** Advancement Via Individual Determination (AVID), World Languages, International Baccalaureate, LOTC (academic and extracurricular offering), Middle School Partners Program (credit attainment), Dual Language (6)
- **SPECIALIZED CLASSROOMS:** Alternative Curriculum Environment (ACE), Behavior Skills Classroom (BSC)
- **FINE ARTS OFFERINGS:** Visual Arts, Band, Choir, Dance, Mariachi, Orchestra, Theatre
- **EXTRACURRICULAR HIGHLIGHTS:** Math Club, Gamma Sigma Girls, National Junior Honor Society, Language Club, Math Club, Art Club opportunities, Girl Scouts, National Hispanic Honor Society, Language Club, Robotics Club/Team, Science Club
- **ATHLETIC OFFERINGS:** **Girls:** Volleyball, Basketball, Track, Soccer, Tennis, Golf, Cross Country • **Boys:** Football, Basketball, Track, Soccer, Tennis, Golf, Cross Country
- **EXTENDED DAY PARTNER:** YMCA of Greater San Antonio
- **COMMUNITY PARTNERS:** Communities in Schools, YMCA



**Grades: 6 – 8**

**2019 State Accountability:  
Rated Below C**

**School Start/End Times:**  
**8:35 a.m. - 3:50 p.m.**  
Earliest Drop-off: 7:30 a.m.  
Latest Pick-up: 4:30 p.m.  
(Extended Day 6 p.m.)

**School Uniform Color:**  
White, Green, Yellow

**Choice Program Specialization:**  
International Baccalaureate



## James Russell Lowell Middle School

919 W. Thompson Place, San Antonio, TX 78226 • (210) 228-1225 | [www.saisd.net/lowellms](http://www.saisd.net/lowellms)

At Lowell Middle School, we believe in providing opportunities that build lifelong, confident learners who have the tools necessary for success in an ever-changing world. Our mission is to develop meaningful relationships, learning that matters, and transform students into leaders.

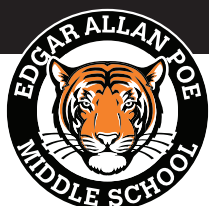
- **ACADEMIC HIGHLIGHTS:** LOTC (academic and extracurricular offering), Middle School Partners Program (credit attainment), Tech Applications
- **SPECIALIZED CLASSROOMS:** Alternative Curriculum Environment (ACE), Behavior Skills Classroom (BSC)
- **FINE ARTS OFFERINGS:** Visual Arts, Band, Choir, Theatre
- **EXTRACURRICULAR HIGHLIGHTS:** Student Council/Government, Pep Squad, Yearbook
- **ATHLETIC OFFERINGS:** **Girls:** Volleyball, Basketball, Track, Soccer, Tennis, Golf, Cross Country • **Boys:** Football, Basketball, Track, Soccer, Tennis, Golf, Cross Country
- **EXTENDED DAY PARTNER:** YMCA of Greater San Antonio
- **COMMUNITY PARTNERS:** Communities in Schools of San Antonio, The University of Texas Health Science Center at San Antonio, Scobee Education Center at San Antonio College, San Antonio Zoo

**Grades: 6 – 8**

**2019 State Accountability:  
Rated Below C**

**School Start/End Times:**  
**8:35 a.m. - 3:50 p.m.**  
Earliest Drop-off: 7:45 a.m.  
Latest Pick-up: 4:15 p.m.

**School Uniform Color:**  
White, Blue, Yellow



## Edgar Allan Poe Middle School

814 Aransas Ave., San Antonio, TX 78210 • (210) 228-1235 | [www.saisd.net/poems](http://www.saisd.net/poems)

At Poe Middle School, we believe every student can demonstrate mastery of learning at high levels through rigorous and engaging instruction. Poe Middle School educates all students, and our mission is to prepare each and every student for college and career readiness.

- **ACADEMIC HIGHLIGHTS:** Information Technology (IT), Middle School Partners Program (credit attainment), Pre-AP offerings, Social and Emotional Learning, STEM/STEAM, Dual Language (6)
- **SPECIALIZED CLASSROOMS:** Alternative Curriculum Environment (ACE)
- **FINE ARTS OFFERINGS:** Visual Arts, Band, Choir, Mariachi, Orchestra, Theatre
- **EXTRACURRICULAR HIGHLIGHTS:** Lunch Bunch Book Club
- **ATHLETIC OFFERINGS:** **Girls:** Volleyball, Basketball, Track, Soccer, Tennis, Golf, Cross Country • **Boys:** Football, Basketball, Track, Soccer, Tennis, Golf, Cross Country
- **EXTENDED DAY PARTNER:** YMCA of Greater San Antonio
- **COMMUNITY PARTNERS:** Magik Theatre, Girl Zone, Communities in Schools

**Grades: 6 – 8**

**2019 State Accountability:  
Rated Below C**

**Distinction Designations:**  
Closing Performance Gaps

**School Start/End Times:**  
**8:35 a.m. - 3:50 p.m.**  
Earliest Drop-off: 7:30 a.m.  
Latest Pick-up: 4:15 p.m.

**School Uniform Color:**  
White or Black polos, Poe Spirit Shirts

**Choice Program Specialization:**  
STEM, Dual Language





## Jeremiah Rhodes Middle School

3000 Tampico St., San Antonio, TX 78207 • (210) 978-7925 | [www.saisd.net/rhodesms](http://www.saisd.net/rhodesms)

At Jeremiah Rhodes Middle School, we believe students deserve and are entitled to every opportunity to leave with the essential knowledge and skills necessary to further their education. We prepare our students for a world that embraces technology in a multitude of ways.

- **ACADEMIC HIGHLIGHTS:** Computer Science, LOTC (academic and extracurricular offering), Robotics
- **SPECIALIZED CLASSROOMS:** Alternative Curriculum Environment (ACE), Behavior Skills Classroom (BSC)
- **FINE ARTS OFFERINGS:** Visual Arts, Band, Choir, Mariachi, Theatre
- **EXTRACURRICULAR HIGHLIGHTS:** National Junior Honor Society, Lego Club, Pep Squad
- **ATHLETIC OFFERINGS:** **Girls:** Volleyball, Basketball, Track, Soccer, Tennis, Golf, Cross Country • **Boys:** Football, Basketball, Track, Soccer, Tennis, Golf, Cross Country
- **EXTENDED DAY PARTNER:** Boys & Girls Club of San Antonio
- **COMMUNITY PARTNERS:** Communities in Schools, City Year, Family Services, Dee Howard Aerospace Foundation, Good Samaritan Center

**Grades: 6 – 8**

**2019 State Accountability: C Rated**

**Distinction Designations:** Social Studies

**School Start/End Times:** 8:35 a.m. - 3:50 p.m.

Earliest Drop-off: 7:45 a.m.

Latest Pick-up: 4:15 p.m.

**School Uniform Color:**

6<sup>th</sup> White | 7<sup>th</sup> Maroon | 8<sup>th</sup> Black

**Choice Program Specialization:** Media and Technology



## Harry H. Rogers Middle School

314 Galway St., San Antonio, TX 78223 • (210) 438-6840 | [www.saisd.net/rogersms](http://www.saisd.net/rogersms)

At Rogers Middle School, we believe in academic excellence for every student. We provide students with a strong educational foundation in math, reading, science and social studies, and provide ESL, special education, and gifted & talented services to eligible students.

- **ACADEMIC HIGHLIGHTS:** Middle School Partners Program (credit attainment), Pre-AP offerings, LOTC (academic and extracurricular offering)
- **SPECIALIZED CLASSROOMS:** Alternative Curriculum Environment (ACE), Behavior Skills Classroom (BSC)
- **FINE ARTS OFFERINGS:** Visual Arts, Band, Choir, Orchestra, Theatre
- **EXTRACURRICULAR HIGHLIGHTS:** Agriculture Club
- **ATHLETIC OFFERINGS:** **Girls:** Volleyball, Basketball, Track, Soccer, Tennis, Golf, Cross Country • **Boys:** Football, Basketball, Track, Soccer, Tennis, Golf, Cross Country
- **EXTENDED DAY PARTNER:** YMCA of Greater San Antonio
- **COMMUNITY PARTNERS:** Communities in Schools

**Grades: 6 – 8**

**2019 State Accountability: Rated Below C**

**School Start/End Times:** 8:35 a.m. - 3:50 p.m.

Earliest Drop-off: 8:00 a.m.

Latest Pick-up: 4:30 p.m.

(Extended Day 6 p.m.)

**School Uniform Color:**

White, Black, Purple



## Fidel Tafolla Middle School

1303 W. César Chávez Blvd., San Antonio, TX 78207 • (210) 978-7930 | [www.saisd.net/tafollams](http://www.saisd.net/tafollams)

At Tafolla Middle School, we believe in working together for student success and empowerment for their future. We offer world languages including Japanese, and we are also a Dual Language campus.

- **ACADEMIC HIGHLIGHTS:** Dual Language (6), World Languages, LOTC (academic and extracurricular offering), Middle School Partners Program (credit attainment), Social and Emotional Learning
- **SPECIALIZED CLASSROOMS:** Alternative Curriculum Environment (ACE), Behavior Skills Classroom (BSC)
- **FINE ARTS OFFERINGS:** Visual Arts, Band, Choir, Mariachi, Orchestra, Theatre
- **EXTRACURRICULAR HIGHLIGHTS:** Japanese, Robotics Club/Team, Mini GEMS
- **ATHLETIC OFFERINGS:** **Girls:** Volleyball, Basketball, Track, Soccer, Tennis, Golf, Cross Country • **Boys:** Football, Basketball, Track, Soccer, Tennis, Golf, Cross Country
- **EXTENDED DAY PARTNER:** YMCA of Greater San Antonio
- **COMMUNITY PARTNERS:** Communities in Schools, City Year, Big Brothers Big Sisters

**Grades: 6 – 8**

**2019 State Accountability: C Rated**

**Distinction Designations:** Academic Growth, Closing Performance Gaps

**School Start/End Times:** 8:35 a.m. - 3:50 p.m.

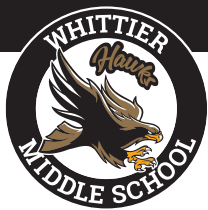
Earliest Drop-off: 7:30 a.m.

Latest Pick-up: 5:30 p.m.

(Extended Day 6 p.m.)

**School Uniform Color:**

Black, Red



# John Greenleaf Whittier Middle School

2101 Edison Drive, San Antonio, TX 78201 • (210) 738-9755 | [www.saisd.net/whittierms](http://www.saisd.net/whittierms)

At Whittier Middle School, our goal is to prepare our students for college and the workforce by teaching them responsibility, organizational skills, providing a rigorous curriculum, and by holding them accountable for their learning.

- **ACADEMIC HIGHLIGHTS:** Advancement Via Individual Determination (AVID), Dual Language
- **SPECIALIZED CLASSROOMS:** Alternative Curriculum Environment (ACE)
- **FINE ARTS OFFERINGS:** Visual Arts, Band, Choir, Mariachi, Theatre
- **EXTRACURRICULAR HIGHLIGHTS:** Book Club, E-Gaming Club opportunities, National Junior Honor Society, STEAM/STEM Club, Yearbook
- **ATHLETIC OFFERINGS:** **Girls:** Volleyball, Basketball, Track, Soccer, Tennis, Golf, Cross Country • **Boys:** Football, Basketball, Track, Soccer, Tennis, Golf, Cross Country
- **EXTENDED DAY PARTNER:** YMCA of Greater San Antonio
- **COMMUNITY PARTNERS:** Big Brother Big Sisters, Communities in Schools

**Grades: 6 – 8**

**2019 State Accountability:  
B Rated**

**Distinction Designations:**  
Reading, Social Studies, Academic Growth, Closing Performance Gaps, Post Secondary Readiness

**School Start/End Times:  
8:35 a.m. - 3:50 p.m.**

Earliest Drop-off: 7:30 a.m.  
Latest Pick-up: 4:30 p.m.  
(Extended Day 6:15 p.m.)

**School Uniform Color:**  
White, Black, Yellow





# Academies

**Academies** are schools with non-traditional grade configurations, such as: PK-8, K-8, 6-12, PK-12, and more.

---

ADVANCED LEARNING ACADEMY

BEACON HILL ACADEMY

BONHAM ACADEMY

BOWDEN ACADEMY

COTTON ACADEMY

CROCKETT ACADEMY

DEMOCRACY PREP AT THE STEWART CAMPUS

FENWICK ACADEMY

HAWTHORNE ACADEMY

IRVING DUAL LANGUAGE ACADEMY

JAPHET ACADEMY

M.L. KING ACADEMY

MISSION ACADEMY

WILL ROGERS ACADEMY

STEELE MONTESSORI ACADEMY

MARK TWAIN DUAL LANGUAGE ACADEMY

WOODLAWN ACADEMY

YOUNG MEN'S LEADERSHIP ACADEMY

YOUNG WOMEN'S LEADERSHIP ACADEMY

---



## Advanced Learning Academy

in partnership with:



621 W. Euclid Ave., San Antonio, TX 78212 (PK-3) • (210) 738-9760 • [www.saisd.net/ala](http://www.saisd.net/ala)  
637 N. Main Ave., San Antonio, TX 78205 (4-12) • (210) 738-9763 • [www.saisd.net/ala](http://www.saisd.net/ala)

At Advanced Learning Academy, we foster a depth of thinking through problem-solving, creative design and real-world applications as students develop deep content knowledge and cutting-edge learning skills to prepare them for any and all futures that they can envision.

- **ACADEMIC HIGHLIGHTS:** PreKindergarten, Spanish, Master Teacher Tutorials, Pre-AP offerings, Project Based Learning, Social and Emotional Learning, STEM/STEAM, Tech Apps
- **FINE ARTS OFFERINGS:** Visual Arts (KG-8), Band (4-8), Elementary Music (KG-5), Dance (6-8), Mariachi (4-8), Theatre (4-8)
- **EXTRACURRICULAR HIGHLIGHTS:** Math Club, Book Club, Gardening Club, Spanish Club, Student Advisory Board, Student Council/Government, Makerspace Sessions, Pep Squad, Robotics Club/Team, Archery
- **ATHLETIC OFFERINGS:** **Girls:** Basketball, Soccer, Cross Country, Volleyball • **Boys:** Basketball, Soccer, Cross Country
- **EXTENDED DAY PARTNER:** YMCA of Greater San Antonio (KG-8)
- **COMMUNITY PARTNERS:** Art Pace, Bibliotech, Briscoe Art Museum, CAST Network, City Year, Curiosity Club, DoSeum, Esperanza, Gemini Ink, Kingdom for Kids, Mitchell Lake, San Antonio Museum of Art, San Antonio River Authority, SAWS, Texas A&M San Antonio, Trinity University, Wolf Trap, Witte Museum, YMCA

**Grades: PK – 12**

**2019 State Accountability: B Rated**

**Distinction Designations:** Reading, Science, Social Studies, Post Secondary Readiness

**School Start/End Times:**

**7:55 a.m. - 4:00 p.m.**

Earliest Drop-off: 7:30 a.m.

Latest Pick-up: 4:00 p.m. (Extended Day 6 p.m.)

**School Uniform Color:**

Hunter Green, White

**Choice Program Specialization:**

Accelerated Learning,  
Project-Based Learning



## Beacon Hill Academy

1411 W. Ashby Place, San Antonio, TX 78201 • (210) 738-9765 | [www.saisd.net/beaconhillacademy](http://www.saisd.net/beaconhillacademy)

At Beacon Hill Academy, we believe our students can and want to learn at their level and ability yet desire to be challenged. We provide students with a variety of learning activities that allow them to create, design, and collaborate.

- **ACADEMIC HIGHLIGHTS:** PreKindergarten, Dual Language, Master Teacher Tutorials, Positive Behavior Interventions and Supports (PBIS), Reading Intervention
- **SPECIALIZED CLASSROOMS:** Alternative Curriculum Environment (ACE)
- **FINE ARTS OFFERINGS:** Visual Arts, Elementary Music (KG-5)
- **EXTRACURRICULAR HIGHLIGHTS:** Spelling Bee, Art Club opportunities, Book Club, Girl Zone, Yearbook
- **ATHLETIC OFFERINGS:** **Girls:** Basketball, Soccer, Cross Country, Volleyball • **Boys:** Basketball, Soccer, Cross Country
- **EXTENDED DAY PARTNER:** Greater San Antonio After-School All-Stars
- **COMMUNITY PARTNERS:** The University of Texas at San Antonio, San Antonio College, San Antonio Youth Literacy, HEB, COPS Metro

**Grades: PK – 8**

**2019 State Accountability: Rated Below C**

**School Start/End Times:**

**8:05 a.m. - 3:20 p.m.**

Earliest Drop-off: 7:30 a.m.

Latest Pick-up: 3:30 p.m.

**School Uniform Color:**

White, Navy Blue, Royal Blue



## James Bonham Academy

925 S. St. Mary's St., San Antonio TX 78205 • (210) 228-3300 | [www.saisd.net/bonhamacademy](http://www.saisd.net/bonhamacademy)

At Bonham Academy, we focus on our three pillars – language, fine arts, and science. Our small school is a nurturing and supportive environment for our students to explore their interests and is committed to ensuring all of our students have the opportunities they deserve.

- **ACADEMIC HIGHLIGHTS:** Advanced Placement (AP) (offerings vary by campus), Dual Language, Robotics, STEM/STEAM, Environmental Science, Mexican American Studies
- **FINE ARTS OFFERINGS:** Visual Arts (K-8), Band (6-8), Elementary Music (KG-5), Dance (6-8), Accordion (6-8), Theatre (2-8), Folclorico (KG-5), Guitar (6-8)
- **EXTRACURRICULAR HIGHLIGHTS:** Chess Club, Philosophy Club, Robotics Club/Team
- **ATHLETIC OFFERINGS:** **Girls:** Basketball, Soccer, Cross Country, Volleyball • **Boys:** Basketball, Soccer, Cross Country
- **EXTENDED DAY PARTNER:** Boys & Girls Club of San Antonio
- **COMMUNITY PARTNERS:** UTSA, Kiwanis, San Anto Cultural Arts, San Antonio Youth Literacy (SAYL), HEB, RBFCU, Jefferson Bank, Broadway Bank, Girls' Inc., SNIPSA, Guide Dogs of Texas Inc., Whataburger, San Antonio Public Library, Bibliotech, Trinity University, San Antonio River Authority, Teach For America San Antonio, San Antonio Museum of Art, Arsenal Church, The Friendly Spot, Little Em's, Rosario's

**Grades: K – 8**

**2019 State Accountability: Rated Below C**

**School Start/End Times:**

**7:55 a.m. - 3:20 p.m.**

Earliest Drop-off: 7:30 a.m.

Latest Pick-up: 3:40 p.m.

(Extended Day 6 p.m.)

**School Uniform Color:**

Hunter Green, White

**Choice Program Specialization:**

Dual Language, Fine Arts, STEAM



# Artemisia Bowden Academy

in partnership with:



515 Willow St., San Antonio, TX 78202 • (210) 738-9770 | [www.saisd.net/bowdenacademy](http://www.saisd.net/bowdenacademy)

Our mission at Bowden Academy is to work in partnership with parents, families, staff, and community stakeholders to cultivate the social, emotional, and academic skills needed to connect our students' learning to their future.

• **ACADEMIC HIGHLIGHTS:** Head Start, PreKindergarten, Dual Language, Advancement Via Individual Determination (AVID), Pre-AP offerings, Project

Based Learning, Social and Emotional Learning, Academic Electives

• **SPECIALIZED CLASSROOMS:** Alternative Curriculum Environment (ACE), Early Childhood Special Education (ECSE)

• **FINE ARTS OFFERINGS:** Visual Arts, Band, Choir, Elementary Music (KG-5)

• **EXTRACURRICULAR HIGHLIGHTS:** Art Club opportunities, Girl Zone, National Junior Honor Society, Journalism, Lunch Bunch Book Club, Student Council

• **ATHLETIC OFFERINGS:** **Girls:** Basketball, Soccer, Cross Country, Volleyball • **Boys:** Basketball, Soccer, Cross Country

• **EXTENDED DAY PARTNER:** Boys & Girls Club of San Antonio

• **COMMUNITY PARTNERS:** Ella Austin, Girl Zone, Ft. Sam Houston, Dignowity Hill Neighborhood Association, Blue Star Art

**Grades: PK – 8**

**2019 State Accountability:**  
**Rated Below C**

**School Start/End Times:**  
**8:00 a.m. - 3:35 p.m. (M-Th)**  
**8:00 a.m. - 12:50 p.m. (Fri)**

Earliest Drop-off: 7:30 a.m.

Latest Pick-up: 3:20 p.m.

(Extended Day 6 p.m.)

**School Uniform Color:**  
White, Red

**Choice Program Specialization:**  
Project-Based Learning



# Agnes Cotton Academy

1616 Blanco Road, San Antonio, TX 78212 • (210) 738-9780 | [www.saisd.net/cottonacademy](http://www.saisd.net/cottonacademy)

At Cotton Academy, students engage in a high-quality academic program within a culture of high expectations that empowers them as leaders while fostering the development of critical thinking, problem-solving, collaboration and communication skills, which are necessary for college and career readiness.

• **ACADEMIC HIGHLIGHTS:** PreKindergarten, Dual Language, Leadership, Master Teacher Tutorials, Positive Behavior Interventions and Supports (PBIS), Reading Intervention, Social and Emotional Learning

• **FINE ARTS OFFERINGS:** Visual Arts, Band, Elementary Music (KG-5), Dance

• **EXTRACURRICULAR HIGHLIGHTS:** Art Club opportunities, Young Professionals Organization, Cheer/Pom Squad, Gardening Club, Safety Patrol

• **ATHLETIC OFFERINGS:** **Girls:** Basketball, Soccer, Cross Country, Volleyball • **Boys:** Basketball, Soccer, Cross Country

• **EXTENDED DAY PARTNER:** YMCA of Greater San Antonio

• **COMMUNITY PARTNERS:** Big Brothers Big Sisters, SA Youth Literacy Buddy Readers, Beacon Hill Community Mentor Program

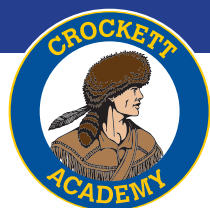
**Grades: PK – 8**

**2019 State Accountability:**  
**B Rated**  
**Distinction Designations:**  
Math, Academic Growth,  
Closing Performance Gaps,  
Post Secondary Readiness

**School Start/End Times:**  
**7:45 a.m. - 3:20 p.m.**  
Earliest Drop-off: 7:20 a.m.  
Latest Pick-up: 3:30 p.m.  
Master Teacher Program: 5:30 p.m.

**School Uniform Color:**  
White, Green

**Choice Program Specialization:**  
Critical Thinking



# David Crockett Academy

2215 Morales St., San Antonio, TX 78207 • (210) 738-9785 | [www.saisd.net/crockettacademy](http://www.saisd.net/crockettacademy)

At Crockett Academy, our goal is to provide all students with a safe learning environment that produces a well-rounded education. Our teachers and staff challenge students to reach their highest potential daily in academics, athletics, arts and citizenship.

• **ACADEMIC HIGHLIGHTS:** PreKindergarten, Advancement Via Individual Determination (AVID), Dual Language, Algebra 1

• **SPECIALIZED CLASSROOMS:** Alternative Curriculum Environment (ACE), Safe Optimal Learning Environment (SOLE)

• **FINE ARTS OFFERINGS:** Visual Arts, Band, Elementary Music (KG-5), Dance, Orchestra

• **EXTRACURRICULAR HIGHLIGHTS:** Coding, Makerspace Sessions

• **ATHLETIC OFFERINGS:** **Girls:** Basketball, Soccer, Cross Country, Volleyball • **Boys:** Basketball, Soccer, Cross Country

• **EXTENDED DAY PARTNER:** Boys & Girls Club of San Antonio

• **COMMUNITY PARTNERS:** St. Mark's Episcopal Church, Communities in School, San Antonio Youth Literacy (SAYL), HEB, UTSA, Good Samaritan Community Services

**Grades: PK – 8**

**2019 State Accountability:**  
**Rated Below C**

**Distinction Designations:**  
Academic Growth

**School Start/End Times:**  
**8:05 a.m. - 3:20 p.m.**  
Earliest Drop-off: 7:15 a.m.  
Latest Pick-up: 3:40 p.m.  
(Extended Day 6 p.m.)

**School Uniform Color:**  
Black, Gray, Blue, Yellow



# Democracy Prep at the Stewart Campus

in partnership with:



1950 Rigsby Ave., San Antonio, TX 78210 • (210) 438-6875 | [www.dpssc.democracyprep.org](http://www.dpssc.democracyprep.org)

At Democracy Prep Stewart, our mission is to educate responsible citizen-scholars for success in a college of their choice and a life of active citizenship. We provide students with a rigorous, college-prep academic program along with co-curriculars that will help students become better learners.

• **ACADEMIC HIGHLIGHTS:** PreKindergarten, Dual Language, Civics Education, Social and Emotional Learning

• **SPECIALIZED CLASSROOMS:** Behavior Support Classroom (BSC)

• **FINE ARTS OFFERINGS:** Visual Arts, Drama/Theatre

• **EXTRACURRICULAR HIGHLIGHTS:** Art Club opportunities, Diversity Club, Drama/Theatre Club opportunities, National Junior Honor Society, Student Council/Government, Speech & Debate, Coding

• **ATHLETIC OFFERINGS:** **Girls:** Basketball, Soccer, Cross Country, Volleyball • **Boys:** Basketball, Soccer, Cross Country

• **EXTENDED DAY PARTNER:** Greater San Antonio After-School All-Stars

• **COMMUNITY PARTNERS:** Big Brothers Big Sisters, San Antonio Youth Literacy (SAYL), Accenture, Coder Dojo, Doseum

**Grades: PK – 8**

**2019 State Accountability:  
Rated Below C**

**School Start/End Times:**

**7:45 a.m. - 3:45 p.m.**

Earliest Drop-off: 7:30 a.m.

Latest Pick-up: 4:00 p.m.

(Extended Day 6 p.m.)

**School Uniform Color:**

Blue, Yellow

**Choice Program Specialization:**  
Civic Education



# Marin B. Fenwick Academy

in partnership with:



1930 Waverly Ave., San Antonio, TX 78228 • (210) 438-6540 | [www.saisd.net/fenwickacademy](http://www.saisd.net/fenwickacademy)

At Fenwick Academy, our educational framework encompasses academics, fine arts, physical fitness, and social-emotional learning. Instruction that engages students in inquiry, critical thinking, problem-solving, creativity, and social interaction is the foundation of learning opportunities on our campus.

• **ACADEMIC HIGHLIGHTS:** PreKindergarten, International Baccalaureate (IB),

Dual Language (PreK - 5)

• **SPECIALIZED CLASSROOMS:** Alternative Curriculum Environment (ACE)

• **FINE ARTS OFFERINGS:** Visual Arts, Elementary Music (KG-5), Dance, Orchestra, Theatre (6-8)

• **EXTRACURRICULAR HIGHLIGHTS:** Chess Club, UIL Academics, Choir, Dance, Theater Arts

• **ATHLETIC OFFERINGS:** **Girls:** Basketball, Soccer, Cross Country, Volleyball • **Boys:** Basketball, Soccer, Cross Country

• **EXTENDED DAY PARTNER:** Greater San Antonio After-School All-Stars

• **COMMUNITY PARTNERS:** HEB, YMCA, Girls Inc, San Antonio College, St. Mary's University, Lion's Club



**Grades: PK – 8**

**2019 State Accountability:  
Rated Below C**

**School Start/End Times:**

**8:05 a.m. - 3:20 p.m.**

Earliest Drop-off: 7:30 a.m.

Latest Pick-up: 3:50 p.m.

(Extended Day 6 p.m.)

**School Uniform Color:**

PK-5<sup>th</sup> Royal Blue | 6<sup>th</sup>-8<sup>th</sup> Black

All grades: White

**Choice Program Specialization:**  
International Baccalaureate,  
Fine Arts



# Nathaniel Hawthorne Academy

115 W. Josephine St., San Antonio, TX 78212 • (210) 738-9795 | [www.saisd.net/hawthorneacademy](http://www.saisd.net/hawthorneacademy)

At Hawthorne Academy, our goal is to empower our scholars to be global change-makers who are equipped with the resources, abilities, and inspiration to overcome challenges, lead their communities, and successfully achieve their dreams.

• **ACADEMIC HIGHLIGHTS:** Advancement Via Individual Determination (AVID),

Leadership, Positive Behavior Interventions and Supports (PBIS), Project Based Learning

• **SPECIALIZED CLASSROOMS:** Alternative Curriculum Environment (ACE)

• **FINE ARTS OFFERINGS:** Visual Arts, Band, Elementary Music (KG-5), Dance, Mariachi

• **EXTRACURRICULAR HIGHLIGHTS:** Coding, Gardening Club, Girl Scouts, Makerspace Sessions, STEAM/STEM Club

• **ATHLETIC OFFERINGS:** **Girls:** Basketball, Soccer, Cross Country, Volleyball • **Boys:** Basketball, Soccer, Cross Country

• **EXTENDED DAY PARTNER:** YMCA of Greater San Antonio

• **COMMUNITY PARTNERS:** Big Brothers Big Sisters, YMCA of San Antonio, San Antonio Museum of Art, San Antonio Youth Literacy

**Grades: K – 8**

**2019 State Accountability:  
Rated Below C**

**School Start/End Times:**

**8:00 a.m. - 3:30 p.m.**

Earliest Drop-off: 7:30 a.m.

Latest Pick-up: 3:45 p.m.

**School Uniform Color:**

Red

**Choice Program Specialization:**  
Civic Education, Fine Arts





## Washington Irving Dual Language Academy

1300 Delgado St., San Antonio, TX 78207 • (210) 738-9740 | [www.saisd.net/irvingacademy](http://www.saisd.net/irvingacademy)

At Washington Irving Dual Language Academy, we provide students with the most advanced comprehensive dual language experience that supports the development of highly proficient biliterate individuals with cognitive meta-linguistic skills.

• **ACADEMIC HIGHLIGHTS:** PreKindergarten, Dual Language

- **FINE ARTS OFFERINGS:** Visual Arts, Band, Elementary Music (KG-5), Mariachi
- **EXTRACURRICULAR HIGHLIGHTS:** Reading Club, Yearbook
- **ATHLETIC OFFERINGS:** **Girls:** Basketball, Soccer, Cross Country, Volleyball • **Boys:** Basketball, Soccer, Cross Country
- **EXTENDED DAY PARTNER:** Boys & Girls Club of San Antonio
- **COMMUNITY PARTNERS:** Garrett Center

**Grades: PK – 8**

**2019 State Accountability:**  
**C Rated**

**School Start/End Times:**

**8:00 a.m. - 3:30 p.m.**

Earliest Drop-off: 7:45 a.m.

Latest Pick-up: 3:45 p.m.

(Extended Day 6 p.m.)

**School Uniform Color:**

Red or White polo, Khaki or Black pants

**Choice Program Specialization:**  
Dual Language



## Eloise Japhet Academy

314 Astor St., San Antonio, TX 78210 • (210) 228-3345 | [www.saisd.net/japhetacademy](http://www.saisd.net/japhetacademy)

At Japhet Academy, it is our goal to ensure every student receives quality instruction, every day, in every classroom. We foster a life-long desire to learn by providing our students with the opportunities to develop themselves academically, physically, socially and emotionally.

• **ACADEMIC HIGHLIGHTS:** PreKindergarten, Dual Language, Middle School

Partners Program (credit attainment), Positive Behavior Interventions and Supports (PBIS)

- **SPECIALIZED CLASSROOMS:** Alternative Curriculum Environment (ACE)
- **FINE ARTS OFFERINGS:** Visual Arts, Band, Elementary Music (KG-5), Orchestra
- **EXTRACURRICULAR HIGHLIGHTS:** Spelling Bee, UIL Creative Writing and Storytelling, Safety Patrol
- **ATHLETIC OFFERINGS:** **Girls:** Basketball, Soccer, Cross Country, Volleyball • **Boys:** Basketball, Soccer, Cross Country
- **EXTENDED DAY PARTNER:** Greater San Antonio After-School All-Stars
- **COMMUNITY PARTNERS:** Direct General, COSTCO, Horace Mann, Liberty Mutual, AT&T, Home Depot, East Central Christian Fellowship

**Grades: PK – 8**

**2019 State Accountability:**  
**Rated Below C**

**School Start/End Times:**

**8:05 a.m. - 3:20 p.m.**

Earliest Drop-off: 7:30 a.m.

Latest Pick-up: 3:40 p.m.

(Extended Day 4:45 p.m.)

**School Uniform Color:**

Blue



## Martin Luther King Academy for Arts Integration

3501 M.L. King Drive, San Antonio, TX 78220 • (210) 978-7935 | [www.saisd.net/mlkingacademy](http://www.saisd.net/mlkingacademy)

At M.L.K. Academy for Arts Integration, we have a focus on arts integration throughout our curriculum to enhance student engagement and allow student expression and creativity and believe all students can be well-rounded individuals.

• **ACADEMIC HIGHLIGHTS:** Master Teacher Tutorials, Social and Emotional Learning, Algebra I, Tech Applications

- **SPECIALIZED CLASSROOMS:** Alternative Curriculum Environment (ACE), Behavior Support Classroom (BSC)
- **FINE ARTS OFFERINGS:** Visual Arts, Band, Elementary Music (KG-5), Dance, Theatre (6-8)
- **EXTRACURRICULAR HIGHLIGHTS:** Book Club, National Junior Honor Society, American Sign Language, Newspaper
- **ATHLETIC OFFERINGS:** **Girls:** Volleyball, Basketball, Track, Soccer, Tennis, Golf, Cross Country • **Boys:** Basketball, Track, Soccer, Tennis, Golf, Cross Country
- **EXTENDED DAY PARTNER:** Boys & Girls Club of San Antonio
- **COMMUNITY PARTNERS:** Big Brothers Big Sisters, Girls Inc., Communities in Schools, Icon Talks, Texas A&M - San Antonio, Alpha Kappa Alpha Sorority Inc., Tobin Center for Performing Arts

**Grades: K – 8**

**2019 State Accountability:**  
**B Rated**

**Distinction Designations:**

Academic Growth,  
Closing Performance Gaps

**School Start/End Times:**

**8:10 a.m. - 3:20 p.m.**

Earliest Drop-off: 7:30 a.m.

Latest Pick-up: 3:30 p.m.

(Extended Day 5:30 p.m.)

**School Uniform Color:**

White, Black, Yellow

**Choice Program Specialization:**  
Arts Integration



## Mission Academy

9210 S. Presa St., San Antonio, TX 78223 • (210) 438-6880 | [www.saisd.net/missionacademy](http://www.saisd.net/missionacademy)

At Mission Academy, we provide students with an equal opportunity to strive academically by offering rigorous academic exposure, small class sizes, technology-driven instruction, and continuous colleague collaboration and growth to enhance the overall classroom experience.

• **ACADEMIC HIGHLIGHTS:** PreKindergarten, Social and Emotional Learning, Regional Day School Program for the Deaf (RDSPD)

• **SPECIALIZED CLASSROOMS:** Alternative Curriculum Environment (ACE)

• **FINE ARTS OFFERINGS:** Visual Arts (KG-8), Choir (6-8), Theatre (KG-8), Band (6-8), Elementary Music (KG-5)

• **EXTRACURRICULAR HIGHLIGHTS:** Safety Patrol

• **ATHLETIC OFFERINGS:** **Girls:** Basketball, Soccer, Cross Country, Volleyball • **Boys:** Basketball, Soccer, Cross Country, Football (7)

• **EXTENDED DAY PARTNER:** Boys & Girls Club of San Antonio

• **COMMUNITY PARTNERS:** Calumet, San Antonio Youth Literacy (SAYL)

**Grades: PK – 8**

**2019 State Accountability:**  
**B Rated**

**Distinction Designations:**  
Social Studies, Academic Growth,  
Closing Performance Gaps,  
Post Secondary Readiness

**School Start/End Times:**  
**8:00 a.m. - 3:20 p.m.**

Earliest Drop-off: 7:25 a.m.

Latest Pick-up: 3:30 p.m.

(Extended Day 6 p.m.)

**School Uniform Color:**  
White, Royal Blue



## Will Rogers Academy

620 McIlvaine St., San Antonio, TX 78212 • (210) 738-9825 | [www.saisd.net/rogersacademy](http://www.saisd.net/rogersacademy)

At Will Rogers Academy, our mission is to provide students from PK-8th grade with an exceptional academic and social learning experience that will become the foundation for students to reach their full potential. We teach the whole child, provide rigorous academic instruction, build strong character, and cultivate creative spirits through our Fine Arts programs..

• **ACADEMIC HIGHLIGHTS:** PreKindergarten, Advanced Placement (AP) (offerings vary by campus), Dual Language

• **SPECIALIZED CLASSROOMS:** Alternate Curriculum Environment (ACE)

• **FINE ARTS OFFERINGS:** Visual Arts, Band, Choir, Elementary Music (KG-5), Theatre (6-8)

• **EXTRACURRICULAR HIGHLIGHTS:** Spelling Bee, Art Club opportunities, Gamma Sigma Girls, Flag football

• **ATHLETIC OFFERINGS:** **Girls:** Basketball, Soccer, Cross Country, Volleyball • **Boys:** Basketball, Soccer, Cross Country

• **EXTENDED DAY PARTNER:** Boys & Girls Club of San Antonio

• **COMMUNITY PARTNERS:** Big Brothers Big Sisters, Girl Scouts, MCCSA, Mission Vineyard, San Antonio Youth Literacy (SAYL), Girls on the Run, Pepsi, VIA Metro Transit

**Grades: PK – 8**

**2019 State Accountability:**  
**Rated Below C**

**School Start/End Times:**  
**8:00 a.m. - 3:20 p.m.**

Earliest Drop-off: 7:30 a.m.

Latest Pick-up: 3:30 p.m.

(Extended Day 6 p.m.)

**School Uniform Color:**  
PK-5<sup>th</sup> White, Purple | 6<sup>th</sup>-8<sup>th</sup> Grey, White



## Laura Steele Montessori Academy

722 Haggin St., San Antonio, TX 78210 • (210) 438-6870 | [www.saisd.net/steelemontessori](http://www.saisd.net/steelemontessori)

At Steele Montessori Academy, we believe in student-centered learning using a Montessori approach with curriculum and a strong emphasis on creating independent individuals who show empathy and compassion.

• **ACADEMIC HIGHLIGHTS:** PreKindergarten, Montessori, Social and Emotional Learning, Multi-Grade Classrooms

• **SPECIALIZED CLASSROOMS:** Early Childhood Special Education (ECSE)

• **FINE ARTS OFFERINGS:** Visual Arts, Elementary Music (KG-5)

• **EXTRACURRICULAR HIGHLIGHTS:** UIL Creative Writing and Storytelling, Art Club opportunities, Recycling Club, Robotics Club/Team, Model UN

• **EXTENDED DAY PARTNER:** YMCA of Greater San Antonio

**Grades: PK – 5** (expanding to PK-8)

**2019 State Accountability:**  
**Rated Below C**

**School Start/End Times:**  
**8:00 a.m. - 3:20 p.m.**

Earliest Drop-off: 7:30 a.m.

Latest Pick-up: 4:00 p.m.

(Extended Day 6 p.m.)

**School Uniform Color:**  
White, Black, Red

**Choice Program Specialization:**  
Montessori





## Mark Twain Dual Language Academy

2411 San Pedro Ave., San Antonio, TX 78212 • (210) 738-9745 | [www.saisd.net/twainduallanguage](http://www.saisd.net/twainduallanguage)

At Mark Twain Dual Language Academy, we are a premier Dual Language school that is guided by three core principles: high levels of bilingualism and biliteracy, high academic achievement in both program languages, and sociocultural competence.

• **ACADEMIC HIGHLIGHTS:** PreKindergarten, Dual Language, Pre AP offerings,

Master Teacher Tutorials, Positive Behavior Interventions and Supports (PBIS), Leader in Me (Social and Emotional Learning)

• **FINE ARTS OFFERINGS:** Visual Arts, Elementary Music (KG-5), Mariachi (6-7)

• **EXTRACURRICULAR HIGHLIGHTS:** Mariachi Club (4-5), Folclorico, Art Club, Makerspace, Book Club, Student Council, After school intramurals

• **ATHLETIC OFFERINGS:** Will participate in Academy Athletics League

• **EXTENDED DAY PARTNER:** YMCA of Greater San Antonio

• **COMMUNITY PARTNERS:** UTSA Lab School, Alta Vista Neighborhood Association

**Grades: PK – 7** (expanding to PK-8)

**2019 State Accountability:**  
**A Rated**

**Distinction Designations:**  
Reading, Math, Closing Performance Gaps, Post Secondary Readiness

**School Start/End Times:**  
**8:00 a.m. - 3:20 p.m.**

Earliest Drop-off: 7:15 a.m.

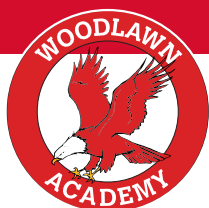
Latest Pick-up: 3:35 p.m.

(Extended Day 4:45 p.m.)

**School Uniform Color:**

Navy Blue, Orange, White

**Choice Program Specialization:**  
Dual Language



## Woodlawn Academy

1717 W. Magnolia Ave., San Antonio, TX 78201 • (210) 438-6560 | [www.saisd.net/woodlawnacademy](http://www.saisd.net/woodlawnacademy)

At Woodlawn Academy, we are a community-centered school that believes in teaching the whole child. We aim to develop inquiring, knowledgeable and caring young people who help create a better and more peaceful world through intercultural understanding and respect.

• **ACADEMIC HIGHLIGHTS:** International Baccalaureate (IB), Dual Language (K-6), World Languages (6), Spanish (6-8), French (6-8), Leadership and Visual Arts (LAVA), U.S. History (8), Principles of Education (8)

• **SPECIALIZED CLASSROOMS:** Alternate Curriculum Environment (ACE)

• **FINE ARTS OFFERINGS:** Visual Arts, Band, Elementary Music (KG-5), Dance

• **EXTRACURRICULAR HIGHLIGHTS:** Art Club, Book Club, Photography Club, Dance Club, Woodlawn Academy Cultural Heritage Club

• **ATHLETIC OFFERINGS:** **Girls:** Basketball, Soccer, Cross Country, Volleyball • **Boys:** Basketball, Soccer, Cross Country

• **EXTENDED DAY PARTNER:** Greater San Antonio After-School All-Stars

• **COMMUNITY PARTNERS:** San Antonio Youth Literacy (SAYL), San Antonio Food Bank, HEB, The Assistance League of San Antonio

in partnership with:



**Grades: K – 8**

**2019 State Accountability:**  
**Rated Below C**

**School Start/End Times:**  
**8:05 a.m. - 3:20 p.m.**

Earliest Drop-off: 7:15 a.m.

Latest Pick-up: 3:45 p.m.

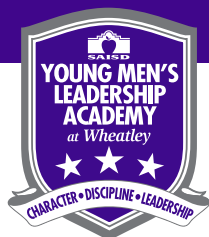
(Extended Day 6 p.m.)

**School Uniform Color:**

White, Black, Red



**Choice Program Specialization:**  
International Baccalaureate



## Young Men's Leadership Academy at Phillis Wheatley

415 Gabriel St., San Antonio, TX 78202 • (210) 354-9652 | [www.saisd.net/ymla](http://www.saisd.net/ymla)

At Young Men's Leadership Academy, we are San Antonio's first all-boys public school offering a model of education that is backed by research indicating that boys and girls learn differently. YMLA helps boys achieve their highest potential by setting high expectations and emphasizing character, leadership and discipline.

• **ACADEMIC HIGHLIGHTS:** Information Technology (IT), LOTC (academic and extracurricular offering), Master Teacher Tutorials, Pre-AP offerings, Project Based Learning, Social and Emotional Learning, Latin, Daily Meditation and Assembly, Single Gender

• **FINE ARTS OFFERINGS:** Visual Arts, Band (6-8), Choir (6-8), Elementary Music (4-5)

• **EXTRACURRICULAR HIGHLIGHTS:** Book Club, Boy Scouts, Coding, Drama/Theatre Club opportunities, Gardening Club, National Junior Honor Society, Student Advisory Board, Student Council/Government, Social Justice

• **ATHLETIC OFFERINGS:** **Boys:** Football, Basketball, Track, Soccer, Tennis, Golf, Cross Country

• **EXTENDED DAY PARTNER:** Greater San Antonio After-School All-Stars

• **COMMUNITY PARTNERS:** Big Brothers, Omega Psi Phi Mentoring, Classical Society

**Grades: 4 – 12**

**2019 State Accountability:**  
**B Rated**

**Distinction Designations:**  
Reading, Math, Science, Social Studies, Academic Growth, Closing Performance Gaps, Post Secondary Readiness

**School Start/End Times:**  
**8:15 a.m. - 4:00 p.m.**

Earliest Drop-off: 7:30 a.m.

Latest Pick-up: 4:15 p.m. (Extended Day 6 p.m.)

**School Uniform Color:**

White, Purple

**Choice Program Specialization:**  
Single Gender, Leadership



# Young Women's Leadership Academy

in partnership with:



2123 W. Huisache Ave., San Antonio, TX 78201 • (210) 438-6525 | [www.saisd.net/ywla](http://www.saisd.net/ywla)

At the Young Women's Leadership Academy, students engage in a rigorous, college-preparatory curriculum with the understanding that 100 percent of students will graduate prepared to enroll in and graduate from college and be active leaders in their community.

- **ACADEMIC HIGHLIGHTS:** Pre-AP offerings, Engineering, Digital Media, Robotics, Civics, Advancement Via Individual Determination (AVID), Critical Discourse, Single Gender
- **FINE ARTS OFFERINGS:** Visual Arts, Choir, Dance (7-8), Theatre
- **EXTRACURRICULAR HIGHLIGHTS:** Math Counts, FIRST Lego League, Honor Societies, Science Club, Girls on the Run Club, Photography Club, Girls Giving Group, Girl Up, Students Demand Action, Student Council, Kindness Rocks Club
- **ATHLETIC OFFERINGS:** **Girls:** Volleyball, Basketball, Track, Soccer, Cross Country
- **EXTENDED DAY PARTNER:** YMCA of Greater San Antonio
- **COMMUNITY PARTNERS:** Audubon Society, Young Women's Preparatory Network, The Magik Theatre, Girls Inc., Girls on the Run, NHI, St. Mary's Law School, HEB, Frost Bank, American Heart Association, NCGS, Southwest Research Institute, Bexar County Women's Bar Association, Impact SA, SAWS, UT Health System

**Grades: 6 – 12**

**2019 State Accountability:  
A Rated**

**Distinction Designations:**  
Reading, Math, Science, Social Studies,  
Academic Growth, Closing Performance  
Gaps, Post Secondary Readiness

**School Start/End Times:**

**8:30 a.m. - 3:45 p.m.**

Earliest Drop-off: 7:30 a.m.

Latest Pick-up: 5:00 p.m.

**School Uniform Color:**

White, Red, Blue, special uniform that  
includes a cardigan, plaid skirt, blouse & tie

**Choice Program Specialization:**

Single Gender, STEM

# Elementary Schools

**Elementary Schools** are PK-5 or PK-6 campuses.

---

ARNOLD ELEMENTARY	HUPPERTZ ELEMENTARY
BALL ELEMENTARY	KELLY ELEMENTARY
BARKLEY-RUIZ ELEMENTARY	SARAH KING ELEMENTARY
BASKIN ELEMENTARY	LAMAR ELEMENTARY
J.T. BRACKENRIDGE ELEMENTARY	MADISON ELEMENTARY
BRISCOE ELEMENTARY	MARGIL ELEMENTARY
CAMERON ELEMENTARY	MAVERICK ELEMENTARY
CARVAJAL ELEMENTARY	MILLER ELEMENTARY
COLLINS GARDEN ELEMENTARY	NEAL ELEMENTARY
DE ZAVALA ELEMENTARY	OGDEN ELEMENTARY
DOUGLASS ELEMENTARY	PERSHING ELEMENTARY
FORBES ELEMENTARY	RIVERSIDE PARK ELEMENTARY
FOSTER ELEMENTARY	RODRIGUEZ MONTESSORI ELEMENTARY
FRANKLIN ELEMENTARY	SCHENCK ELEMENTARY
GATES ELEMENTARY	SMITH ELEMENTARY
GRAEBNER ELEMENTARY	STORM ELEMENTARY
GREEN ELEMENTARY	WASHINGTON ELEMENTARY
HERFF ELEMENTARY	WILSON ELEMENTARY
HIGHLAND HILLS ELEMENTARY	WOODLAWN HILLS ELEMENTARY
HIGHLAND PARK ELEMENTARY	YWLA: PRIMARY
HILLCREST ELEMENTARY	
HIRSCH ELEMENTARY	

---



## Charles A. Arnold Elementary School

467 Freiling Drive, San Antonio, TX 78213 • (210) 438-6530 | www.saisd.net/arnoldes

At Arnold Elementary School, we believe that high expectations are the key to student success. Our school educates all students, and our mission is to create lifelong learners who are ready for the real world.

- **ACADEMIC HIGHLIGHTS:** Head Start, PreKindergarten, Dual Language, Reading Intervention, Social and Emotional Learning
- **SPECIALIZED CLASSROOMS:** Alternative Curriculum Environment (ACE), Bilingual Early Childhood Special Education (ECSE)
- **FINE ARTS OFFERINGS:** Visual Arts, Elementary Music, Elementary Strings (4-5)
- **EXTRACURRICULAR HIGHLIGHTS:** UIL Creative Writing and Storytelling, Book Club, Safety Patrol, Writing Club
- **EXTENDED DAY PARTNER:** Greater San Antonio After-School All-Stars

**Grades: PK – 5**

**2019 State Accountability: C Rated**

**School Start/End Times:**

**8:00 a.m. - 3:20 p.m.**

Earliest Drop-off: 7:30 a.m.

Latest Pick-up: 3:30 p.m.

(Extended Day 6 p.m.)

**School Uniform Color:**

White, Green



## Charles C. Ball Elementary School

343 Koehler Court, San Antonio, TX 78223 • (210) 438-6845 | www.saisd.net/balles

At Charles C. Ball Elementary School, students are provided with project-based learning curriculum and a wide range of technology resources that increase rigor and relevance and provide students with the 21st-century skills that they need to be successful in the careers of the future.

- **ACADEMIC HIGHLIGHTS:** PreKindergarten, Dual Language, Project Based Learning, STEM/STEAM
- **SPECIALIZED CLASSROOMS:** Alternative Curriculum Environment (ACE), Early Childhood Special Education (ECSE)
- **FINE ARTS OFFERINGS:** Visual Arts, Elementary Music, Elementary Strings (4-5)
- **EXTRACURRICULAR HIGHLIGHTS:** Art Club opportunities, Drama/Theatre Club opportunities
- **EXTENDED DAY PARTNER:** Greater San Antonio After-School All-Stars

**Grades: PK – 5**

**2019 State Accountability: Rated Below C**

**School Start/End Times:**

**8:00 a.m. - 3:20 p.m.**

Earliest Drop-off: 7:15 a.m.

Latest Pick-up: 4:00 p.m.

(Extended Day 6:20 p.m.)

**School Uniform Color:**

Free dress, spirit shirts, black and blue bottoms

**Choice Program Specialization:**  
Project-Based Learning



## Barkley-Ruiz Elementary School

1111 S. Navidad St., San Antonio, TX 78207 • (210) 978-7940 | www.saisd.net/barkleyruizes

At Barkley-Ruiz Elementary School, we believe we must teach students in the way that they learn best. Our school's primary focus is to allow opportunities where our students take the starring role in their learning and understanding using the Constructivism model.

- **ACADEMIC HIGHLIGHTS:** PreKindergarten, Project Based Learning, Social and Emotional Learning; 6 Master Teachers; Positive Behavior Interventions and Supports (PBIS)
- **SPECIALIZED CLASSROOMS:** Alternative Curriculum Environment (ACE), Bilingual Early Childhood Special Education (ECSE), Safe Optimal Learning Environment (SOLE)
- **FINE ARTS OFFERINGS:** Visual Arts, Elementary Music, Mariachi (3-5)
- **EXTRACURRICULAR HIGHLIGHTS:** Reading Club, Peer Assistance & Leadership (PALs), Lego Club, Safety Patrol, Yearbook, UIW Mini GEMS Girl Teams, Gardening Club, Choir
- **EXTENDED DAY PARTNER:** Boys & Girls Club of San Antonio

**Grades: PK – 5**

**2019 State Accountability: C Rated**

**Distinction Designations:**  
Science, Academic Growth, Closing Performance Gaps

**School Start/End Times:**

**8:05 a.m. - 3:20 p.m.**

Earliest Drop-off: 7:15 a.m.

Latest Pick-up: 4:00 p.m.

(Extended Day 4:15 p.m.)

**School Uniform Color:**

Red, White, Blue

**Choice Program Specialization:**  
Project-Based Learning



## Mildred Baskin Elementary School

630 Crestview Drive, San Antonio, TX 78201 • (210) 438-6535 | [www.saisd.net/baskines](http://www.saisd.net/baskines)

At Baskin Elementary School, we provide students with engaging, student-centered lessons that will develop lifelong learners so that upon graduation they will feel empowered and equipped to pursue their dreams.

• **ACADEMIC HIGHLIGHTS:** PreKindergarten, Master Teacher Tutorials, Positive Behavior Interventions and Supports (PBIS), Reading Intervention, Social and Emotional Learning

- **SPECIALIZED CLASSROOMS:** Behavior Support Classroom (BSC)
- **FINE ARTS OFFERINGS:** Visual Arts, Elementary Music
- **EXTRACURRICULAR HIGHLIGHTS:** Coding, Lunch Bunch Book Club, Gardening, Safety Patrols, Peer Mediation, UIL
- **EXTENDED DAY PARTNER:** YMCA of Greater San Antonio
- **COMMUNITY PARTNERS:** SAYL, UTSA, City of Balcones Heights, Target, HEB, Chick Fil A, Bedoy's Bakery, Cafe Rosa, Pretty Petals

**Grades: PK – 5**

**2019 State Accountability: B Rated**

**Distinction Designations:**  
Reading, Math,  
Post Secondary Readiness

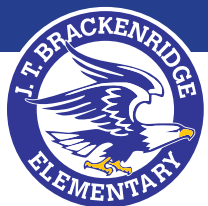
**School Start/End Times:**  
**8:00 a.m. - 3:20 p.m.**

Earliest Drop-off: 7:30 a.m.

Latest Pick-up: 3:30 p.m.

(Extended Day 6 p.m.)

**School Uniform Color:**  
Blue



## J.T. Brackenridge Elementary School

1214 Guadalupe St., San Antonio, TX 78207 • (210) 978-7950 | [www.saisd.net/jtbrackes](http://www.saisd.net/jtbrackes)

At J.T. Brackenridge Elementary School, your children are engaged in learning, and our teachers propel our scholars' academic growth and development to high levels. We focus on our most critical work of providing children with the best education possible.

• **ACADEMIC HIGHLIGHTS:** Head Start, PreKindergarten, Dual Language, Positive Behavior Interventions and Supports (PBIS), Social and Emotional Learning

- **SPECIALIZED CLASSROOMS:** Behavior Support Classroom (BSC)
- **FINE ARTS OFFERINGS:** Visual Arts, Elementary Music
- **EXTRACURRICULAR HIGHLIGHTS:** Crazy 8's Math Club, Reading Book Club, Art Club, San Antonio iPlay, Girls on the Run
- **EXTENDED DAY PARTNER:** Boys & Girls Club of San Antonio
- **COMMUNITY PARTNERS:** Southwest School of Art KIDS Program, ESPERANZA Center, AVENIDA Guadalupe, Guadalupe Cultural Arts Center, Communities in Schools, Martinez Street Women's Center

**Grades: PK – 5**

**2019 State Accountability: Rated Below C**

**School Start/End Times:**  
**8:00 a.m. - 3:20 p.m.**

Earliest Drop-off: 7:30 a.m.

Latest Pick-up: 3:30 p.m.

(Extended Day 5:30 p.m.)

**School Uniform Color:**  
White, Black, Blue



## Andrew Briscoe Elementary School

2015 S. Flores St., San Antonio, TX 78204 • (210) 228-3305 | [www.saisd.net/briscoees](http://www.saisd.net/briscoees)

At Briscoe Elementary School, we believe it is necessary to provide students with the tools and opportunities to take ownership of their learning and be contributors to the community and the world. It is imperative to develop intellectual thinkers who are academically successful and internationally minded.

• **ACADEMIC HIGHLIGHTS:** International Baccalaureate (IB), PreKindergarten, Dual Language, Reading Intervention

- **SPECIALIZED CLASSROOMS:** Early Childhood Special Education (ECSE)
- **FINE ARTS OFFERINGS:** Visual Arts, Elementary Music, Spanish
- **EXTRACURRICULAR HIGHLIGHTS:** Crochet Club, Kindness Rocks Club, Recycling Club, Safety Patrol, Los Caballeros Distinguidos (Teaches young men etiquette, social manners)
- **EXTENDED DAY PARTNER:** Greater San Antonio After-School All-Stars
- **COMMUNITY PARTNERS:** Communities in Schools, S.M.A.R.T., Ft. Sam Houston Medical Battalion, Hill Country Bakery, First Baptist Church - Briscoe Buddies, San Antonio Museum of Art, The McNay, UTSA, San Antonio Youth Literacy (SAYL), Boys & Girls Club, Mays Center, Texas A&M San Antonio

in partnership with:



**Grades: PK – 5**

**2019 State Accountability: C Rated**

**Distinction Designation:**  
Academic Growth

**School Start/End Times:**  
**7:30 a.m. - 3:30 p.m.**

Earliest Drop-off: 7:15 a.m.

Latest Pick-up: 3:45 p.m.

(Extended Day 6 p.m.)

**School Uniform Color:**  
White, Green, Yellow



**Choice Program Specialization:**  
International Baccalaureate





## Bella Cameron Elementary School

3635 Belgium Lane, San Antonio, TX 78219 • (210) 978-7960 | [www.saisd.net/camerones](http://www.saisd.net/camerones)

At Cameron Elementary School, your child is encouraged to take risks, think deeply and actively participate in conversations about his/her education. Our students learn through a mix of traditional classroom teaching and technology, for a 21st-century blended learning approach.

- **ACADEMIC HIGHLIGHTS:** PreKindergarten, Master Teacher Tutorials, Positive Behavior Interventions and Supports (PBIS), Reading Intervention, Social and Emotional Learning
- **SPECIALIZED CLASSROOMS:** Alternative Curriculum Environment (ACE), Early Childhood Special Education (ECSE)
- **FINE ARTS OFFERINGS:** Visual Arts, Elementary Music
- **EXTRACURRICULAR HIGHLIGHTS:** Safety Patrol, Running Club
- **EXTENDED DAY PARTNER:** Boys & Girls Club of San Antonio
- **COMMUNITY PARTNERS:** Communities in School, First Responders, Rackspace

**Grades: PK – 5**

**2019 State Accountability: C Rated**

**School Start/End Times: 8:05 a.m. - 3:20 p.m.**

Earliest Drop-off: 7:30 a.m.  
Latest Pick-up: 3:45 p.m.  
(Extended Day 4:45 p.m.)

**School Uniform Color: Blue**

**Choice Program Specialization: Critical Thinking**



## Esther Perez Carvajal Elementary School

225 Arizona Ave., San Antonio, TX 78207 • (210) 978-7970 | [www.saisd.net/carvajales](http://www.saisd.net/carvajales)

At Carvajal Elementary School, we believe that a robust school sets a strong foundation for students' educational journeys. Together with parents, teachers, staff and community members, students will thrive and have a joyful school experience.

- **ACADEMIC HIGHLIGHTS:** Head Start, Dual Language, STEM/STEAM
- **SPECIALIZED CLASSROOMS:** Early Childhood Special Education (ECSE)
- **FINE ARTS OFFERINGS:** Visual Arts, Elementary Music
- **EXTRACURRICULAR HIGHLIGHTS:** STEAM/STEM Club
- **EXTENDED DAY PARTNER:** YMCA of Greater San Antonio
- **COMMUNITY PARTNERS:** City of San Antonio, City Year, Communities in Schools, Our Lady of the Lake University, UTSA, SAPD

**Grades: Head Start & K – 5**

**2019 State Accountability: NA**

**School Start/End Times: 8:05 a.m. - 3:20 p.m.**

Earliest Drop-off: 7:30 a.m.  
Latest Pick-up: 6:00 p.m.

**School Uniform Color: Blue**



## Collins Garden Elementary School

167 Harriman Place, San Antonio, TX 78204 • (210) 228-3310 | [www.saisd.net/collinsgardenes](http://www.saisd.net/collinsgardenes)

At Collins Garden Elementary School, your child has the opportunity to receive a high-quality education in an engaging, supportive, and caring learning environment. All students are challenged in the classroom and can build leadership and teamwork skills.

- **ACADEMIC HIGHLIGHTS:** PreKindergarten, Dual Language, Master Teacher Tutorials, Positive Behavior Interventions and Supports (PBIS), Reading Intervention, Social and Emotional Learning
- **FINE ARTS OFFERINGS:** Visual Arts, Elementary Music, Choir
- **EXTRACURRICULAR HIGHLIGHTS:** Spelling Bee, UIL Creative Writing and Storytelling, Book Club, Chess Club, Gardening Club, Student Council/Government, Safety Patrol, True Grit Fitness
- **EXTENDED DAY PARTNER:** Boys & Girls Club of San Antonio
- **COMMUNITY PARTNERS:** San Antonio Youth Literacy (SAYL)

**Grades: PK – 5**

**2019 State Accountability: C Rated**

**School Start/End Times: 8:05 a.m. - 3:20 p.m.**

Earliest Drop-off: 7:30 a.m.  
Latest Pick-up: 3:20 p.m.  
(Extended Day 4:45 p.m. T-Th)

**School Uniform Color: Royal Blue**





## Lorenzo De Zavala Elementary School

2311 San Luis St., San Antonio, TX 78207 • (210) 978-7975 | [www.saisd.net/dezavalaes](http://www.saisd.net/dezavalaes)

At De Zavala Elementary School, we believe working together and supporting one another through a close partnership is an essential factor in creating a wonderful learning community.

• **ACADEMIC HIGHLIGHTS:** Head Start, PreKindergarten, Dual Language, Master Teacher Tutorials

- **SPECIALIZED CLASSROOMS:** Behavior Support Classroom (BSC), Early Childhood Special Education (ECSE)
- **FINE ARTS OFFERINGS:** Visual Arts, Elementary Music
- **EXTRACURRICULAR HIGHLIGHTS:** Spelling Bee, Reading Club, Lunch Bunch Book Club, Choir
- **EXTENDED DAY PARTNER:** Boys & Girls Club of San Antonio
- **COMMUNITY PARTNERS:** San Antonio Youth Literacy (SAYL), Communities In Schools

**Grades: PK – 5**

**2019 State Accountability:**  
**C Rated**

**School Start/End Times:**  
**8:05 a.m. - 3:30 p.m.**

Earliest Drop-off: 7:30 a.m.  
Latest Pick-up: 3:35 p.m.  
(Extended Day 4:45 p.m.)

**School Uniform Color:**  
White, Blue



## Frederick Douglass Elementary School

318 Martin Luther King Drive, San Antonio, TX 78203 • (210) 228-3315 | [www.saisd.net/douglasses](http://www.saisd.net/douglasses)

At Douglass Elementary School, we are committed to ensuring our students grow, learn, create, and innovate through daily instruction based on individual student needs along with providing immediate feedback to students and families. We aim to serve and build our community so our students can cultivate a future of their own.

• **ACADEMIC HIGHLIGHTS:** PreKindergarten, Makerspace, Master Teacher

Tutorials, Positive Behavior Interventions and Supports (PBIS), Reading Intervention, Robotics, Social and Emotional Learning, STEM/STEAM

- **SPECIALIZED CLASSROOMS:** Alternative Curriculum Environment (ACE)
- **FINE ARTS OFFERINGS:** Visual Arts, Elementary Music, Elementary Strings (4-5)
- **EXTRACURRICULAR HIGHLIGHTS:** Spelling Bee, Gardening Club, Girl Zone, National Honor Society, Student Advisory Board, Lego Club, Makerspace Sessions, Robotics Club/Team, Safety Patrol
- **EXTENDED DAY PARTNER:** Boys & Girls Club of San Antonio
- **COMMUNITY PARTNERS:** No Excuses University Network, DoSeum, San Antonio Youth Literacy (SAYL), Girls Zone, Mount Zion Baptist Church, SAFD (sponsored by Chief Hood), "Yes, We Can!" Program

**Grades: PK – 5**

**2019 State Accountability:**  
**Rated Below C**

**School Start/End Times:**  
**8:05 a.m. - 3:20 p.m.**

Earliest Drop-off: 7:30 a.m.  
Latest Pick-up: 4:00 p.m.

**School Uniform Color:**  
White, Gray, Blue



## Muriel Vance Forbes Elementary School

2630 Sally Gay Drive, San Antonio, TX 78223 • (210) 438-6850 | [www.saisd.net/forbeses](http://www.saisd.net/forbeses)

At Forbes Elementary School, our small campus size allows teachers and staff to provide the instructional and emotional support each of our students need to be successful each day. Our teachers and staff focus on planning and providing all students with instruction that contains multiple levels of rigor - the right fit for each individual student.

- **ACADEMIC HIGHLIGHTS:** PreKindergarten
- **SPECIALIZED CLASSROOMS:** Behavior Support Classroom (BSC)
- **FINE ARTS OFFERINGS:** Visual Arts, Elementary Music
- **EXTRACURRICULAR HIGHLIGHTS:** Student Council/Government
- **EXTENDED DAY PARTNER:** Greater San Antonio After-School All-Stars

**Grades: PK – 5**

**2019 State Accountability:**  
**C Rated**

**School Start/End Times:**  
**8:10 a.m. - 3:10 p.m.**

Earliest Drop-off: 7:30 a.m.  
Latest Pick-up: 3:30 p.m.  
(Extended Day 6 p.m.)

**School Uniform Color:**  
White, Black, Navy Blue



## Inez Foster Elementary School

6718 Pecan Valley Drive, San Antonio, TX 78223 • (210) 438-6855 | [www.saisd.net/fosteres](http://www.saisd.net/fosteres)

At Foster Elementary School, we believe in providing high-quality instruction to all our students. Foster's master teachers serve all students and offer after-school tutoring, which enhances our students' educational experience.

• **ACADEMIC HIGHLIGHTS:** Head Start, PreKindergarten, Reading Intervention

• **SPECIALIZED CLASSROOMS:** Alternative Curriculum Environment (ACE), Early Childhood Special Education (ECSE)

• **FINE ARTS OFFERINGS:** Visual Arts, Elementary Music

• **EXTRACURRICULAR HIGHLIGHTS:** Math Club, Reading Club, Book Club, Yearbook

• **EXTENDED DAY PARTNER:** YMCA of Greater San Antonio

**Grades: PK – 5**

**2019 State Accountability:**  
**Rated Below C**

**School Start/End Times:**  
**8:05 a.m. - 3:20 p.m.**

Earliest Drop-off: 7:15 a.m.

Latest Pick-up: 3:20 p.m.

(Extended Day 5 p.m.)

**School Uniform Color:**

All grades White, Blue



## Benjamin Franklin Elementary School

1915 W. Olmos Drive, San Antonio, TX 78201 • (210) 738-9790 | [www.saisd.net/franklines](http://www.saisd.net/franklines)

At Benjamin Franklin Elementary School, we believe our students will become lifelong learners and pursue higher education beyond high school; creating confident, compassionate and productive citizens.

• **ACADEMIC HIGHLIGHTS:** PreKindergarten, Dual Language, Master Teacher Tutorials, Positive Behavior Interventions and Supports (PBIS), Reading

Intervention, Social and Emotional Learning

• **SPECIALIZED CLASSROOMS:** Alternative Curriculum Environment (ACE)

• **FINE ARTS OFFERINGS:** Visual Arts, Elementary Music

• **EXTRACURRICULAR HIGHLIGHTS:** Spelling Bee, Book Club, Chef/Cooking opportunities, Recycling Club, Safety Patrol, UIL Creative Writing and Storytelling

• **EXTENDED DAY PARTNER:** Greater San Antonio After-School All-Stars

• **COMMUNITY PARTNERS:** UTSA Support and Enrichment Experience in Math (SEE)

**Grades: PK – 5**

**2019 State Accountability:**  
**B Rated**

**Distinction Designation:**  
Post Secondary Readiness

**School Start/End Times:**  
**8:05 a.m. - 3:20 p.m.**

Earliest Drop-off: 7:30 a.m.

Latest Pick-up: 3:20 p.m.

(Extended Day 6 p.m.)

**School Uniform Color:**

White, Blue



## Samuel Houston Gates Elementary School

510 Morningview Drive, San Antonio, TX 78220 • (210) 738-9780 | [www.saisd.net/gateses](http://www.saisd.net/gateses)

Gates Elementary School is a student-centered neighborhood school focused on building a love for learning. At Gates, we believe in implementing data-based instructional strategies. We continue to reach, strive and grow daily.

• **ACADEMIC HIGHLIGHTS:** PreKindergarten, Reading Intervention, Social and Emotional Learning

• **SPECIALIZED CLASSROOMS:** Alternative Curriculum Environment (ACE)

• **FINE ARTS OFFERINGS:** Visual Arts, Band (6), Elementary Music

• **EXTRACURRICULAR HIGHLIGHTS:** Math Club, Art Club opportunities, Book Club

• **EXTENDED DAY PARTNER:** Boys & Girls Club of San Antonio

• **COMMUNITY PARTNERS:** NAACP Women, Reach Ministry, Gospel 1480 Radio Station, Emmanuel Baptist Church, Mittman Street Diner, Mr. and Mrs G's, HEB, Taco Cabana, Whataburger, AT&T Center, Spurs Foundation, Starlight Baptist Church, Starbucks

in partnership with:



**Grades: PK – 6**

**2019 State Accountability:**  
**B Rated**

**Distinction Designations:**  
Reading, Academic Growth,  
Closing Performance Gaps,  
Post Secondary Readiness

**School Start/End Times:**  
**8:05 a.m. - 3:20 p.m.**

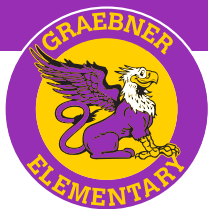
Earliest Drop-off: 7:30 a.m.

Latest Pick-up: 3:30 p.m. (Extended Day 4:20 p.m.)

**School Uniform Color:**

White, Green, Yellow

**Choice Program Specialization:**  
Literacy



## Charles Graebner Elementary School

530 Hoover Ave., San Antonio, TX 78225 • (210) 228-3320 | [www.saisd.net/graebneres](http://www.saisd.net/graebneres)

At Graebner Elementary School, we believe in the success and potential of each one of our students and prepare them to become tomorrow's leaders. Our diverse extracurricular offerings provide leadership skills and community outreach services.

• **ACADEMIC HIGHLIGHTS:** Head Start, PreKindergarten, Dual Language

- **SPECIALIZED CLASSROOMS:** Alternative Curriculum Environment (ACE)
- **FINE ARTS OFFERINGS:** Visual Arts, Elementary Music
- **EXTRACURRICULAR HIGHLIGHTS:** Spelling Bee, Mariachi Club, Chess Club, Running Club
- **EXTENDED DAY PARTNER:** YMCA of Greater San Antonio

**Grades: PK – 5**

**2019 State Accountability:**  
**B Rated**

**Distinction Designation:**  
Academic Growth

**School Start/End Times:**  
**8:00 a.m. - 3:20 p.m.**

Earliest Drop-off: 7:30 a.m.

Latest Pick-up: 4:00 p.m.

(Extended Day 6 p.m.)

**School Uniform Color:**  
White, Yellow, Purple



## Robert B. Green Elementary School

122 W. Whittier St., San Antonio, TX 78210 • (210) 228-3325 | [www.saisd.net/greenes](http://www.saisd.net/greenes)

At Robert B. Green Elementary School, the most important part of our school community is our children and the families we serve. We believe that parents and guardians are a valuable component of our students' education.

• **ACADEMIC HIGHLIGHTS:** PreKindergarten, Master Teacher Tutorials, Positive Behavior Interventions and Supports (PBIS)

- **SPECIALIZED CLASSROOMS:** Alternative Curriculum Environment (ACE)
- **FINE ARTS OFFERINGS:** Visual Arts, Elementary Music
- **EXTRACURRICULAR HIGHLIGHTS:** UIL Creative Writing and Storytelling, Student Council, Lunch Bunch Book Club, Safety Patrol
- **EXTENDED DAY PARTNER:** Greater San Antonio After-School All-Stars
- **COMMUNITY PARTNERS:** San Antonio Youth Literacy (SAYL)

**Grades: PK - 5**

**2019 State Accountability:**  
**Rated Below C**

**Distinction Designations:**  
Science

**School Start/End Times:**  
**7:45 a.m. - 3:20 p.m.**

Earliest Drop-off: 7:00 a.m.

Latest Pick-up: 3:30 p.m.

(Extended Day 6 p.m.)

**School Uniform Color:**  
White, Green



## Ferdinand Herff Elementary School

996 S. Hackberry St., San Antonio, TX 78210 • (210) 228-3330 | [www.saisd.net/herffes](http://www.saisd.net/herffes)

At Herff Elementary School, educators provide an encouraging environment and motivate students to achieve high levels of learning today to empower their tomorrow. We believe that all students are capable of learning and succeeding.

• **ACADEMIC HIGHLIGHTS:** PreKindergarten, Advancement Via Individual Determination (AVID), Dual Language, Master Teacher Tutorials, Reading Intervention

- **SPECIALIZED CLASSROOMS:** Early Childhood Special Education (ECSE)
- **FINE ARTS OFFERINGS:** Visual Arts, Elementary Music
- **EXTRACURRICULAR HIGHLIGHTS:** Spelling Bee, UIL Creative Writing and Storytelling, Girl Zone, Lunch Bunch Book Club, Makerspace Sessions, Running Club, Garden Club, Zumba after school, Mini Cheer Camp
- **EXTENDED DAY PARTNER:** Greater San Antonio After-School All-Stars
- **COMMUNITY PARTNERS:** Communities In Schools, San Antonio Youth Literacy (SAYL), Saint Paul United Methodist Church, Carver Community Cultural Center

**Grades: PK – 5**

**2019 State Accountability:**  
**Rated Below C**

**School Start/End Times:**  
**8:00 a.m. - 3:20 p.m.**

Earliest Drop-off: 7:30 a.m.

Latest Pick-up: 6:00 p.m.

**School Uniform Color:**  
White, Black, Blue, Khaki



## Highland Hills Elementary School

734 Glamis Ave., San Antonio, TX 78223 • (210) 438-6860 | [www.saisd.net/highlandhillses](http://www.saisd.net/highlandhillses)

At Highland Hills Elementary School, your child will hear the message “have a growth mindset.” We make sure your child gets experience working in small groups, strategizing and solving problems together, to develop collaborative skills they will use at every future stage of their lives.

• **ACADEMIC HIGHLIGHTS:** PreKindergarten

- **SPECIALIZED CLASSROOMS:** Early Childhood Special Education (ECSE)
- **FINE ARTS OFFERINGS:** Visual Arts, Elementary Music
- **EXTENDED DAY PARTNER:** Greater San Antonio After-School All-Stars
- **COMMUNITY PARTNERS:** Chick-Fil-A, HEB, McDonald's, Texas Roadhouse, Walmart

**Grades: PK – 5**

**2019 State Accountability:**  
**B Rated**

**Distinction Designations:**  
Math, Academic Growth,  
Closing Performance Gaps,  
Post Secondary Readiness

**School Start/End Times:**  
**8:00 a.m. - 3:20 p.m.**

Earliest Drop-off: 7:15 a.m.

Latest Pick-up: 3:40 p.m.

(Extended Day 6 p.m.)

**School Uniform Color:**  
Blue, Yellow



## Highland Park Elementary School

635 Rigsby Ave., San Antonio, TX 78210 • (210) 228-3335 | [www.saisd.net/highlandparkes](http://www.saisd.net/highlandparkes)

Highland Park Elementary School staff members ensure that learning is challenging, stimulating and fun in the quest to shape independent, lifelong learners. Students are challenged daily to gain a deeper understanding of concepts and connect what they learn to their everyday lives.

- **ACADEMIC HIGHLIGHTS:** PreKindergarten, Dual Language, Master Teacher Tutorials
- **SPECIALIZED CLASSROOMS:** Alternative Curriculum Environment (ACE), Behavior Support Classroom (BSC)
- **FINE ARTS OFFERINGS:** Visual Arts, Elementary Music
- **EXTRACURRICULAR HIGHLIGHTS:** Spelling Bee, Art Club opportunities, Chef/Cooking opportunities, Chess Club, Dance Team/Club opportunities, Gardening Club, Recycling Club, Safety Patrol, Writing Club, Running Club, Technology Club, Student Council, Beautification Committee, Sprouts (for younger students)
- **EXTENDED DAY PARTNER:** Greater San Antonio After-School All-Stars
- **COMMUNITY PARTNERS:** Rainbow Bakery, Chick-Fil-A, Peter Piper Pizza, Forrester Financial, Fraternal Financial, Jimmy Johns, SA Heals, Food Bank, Redeemer Presbyterian Church, Irma's Angels, SAFD, New Birth Missionary Baptist Church, Urban 15 Group, Assistance League of San Antonio, Mrs. Bairds, San Antonio Area Retired Teachers Association (SAARTA), Troop 300, The Smile Center, Acadian Ambulance, Boys and Girls Club

**Grades: PK – 5**

**2019 State Accountability:**  
**A Rated**

**Distinction Designations:**  
Reading, Math, Science, Academic  
Growth, Closing Performance Gaps,  
Post Secondary Readiness

**School Start/End Times:**  
**8:05 a.m. - 3:20 p.m.**

Earliest Drop-off: 7:15 a.m.

Latest Pick-up: 4:00 p.m.

(Extended Day 5:30 p.m.)

**School Uniform Color:**  
Green, White



## Hillcrest Elementary School

211 W. Malone Ave., San Antonio, TX 78214 • (210) 228-3340 | [www.saisd.net/hillcrestes](http://www.saisd.net/hillcrestes)

At Hillcrest Elementary School, we believe in providing a quality education where students become passionately engaged learners, well-rounded, and problem-solving individuals through dynamic teaching, effective modeling, providing ample opportunities and acknowledging their talents and achievements.

• **ACADEMIC HIGHLIGHTS:** PreKindergarten, Dual Language, Positive Behavior Interventions and Supports (PBIS)

- **SPECIALIZED CLASSROOMS:** Alternative Curriculum Environment (ACE), Behavior Support Classroom (BSC)
- **FINE ARTS OFFERINGS:** Visual Arts, Elementary Music
- **EXTRACURRICULAR HIGHLIGHTS:** Agriculture Club, Book Club, Chess Club, Dance Team/Club opportunities, Robotics Club/Team, Scrabble Club, Safety Patrols
- **EXTENDED DAY PARTNER:** Greater San Antonio After-School All-Stars
- **COMMUNITY PARTNERS:** San Antonio Youth Literacy (SAYL)

**Grades: PK – 5**

**2019 State Accountability:**  
**C Rated**

**Distinction Designation:**  
Academic Growth

**School Start/End Times:**  
**8:05 a.m. - 3:20 p.m.**

Earliest Drop-off: 7:30 a.m.

Latest Pick-up: 3:35 p.m.

(Extended Day 6 p.m.)

**School Uniform Color:**  
Maroon





## Herman Hirsch Elementary School

4826 Seabreeze Drive, San Antonio, TX 78220 • (210) 978-7985 | [www.saisd.net/hirsches](http://www.saisd.net/hirsches)

At Herman Hirsch Elementary School, we are committed to creating a supportive learning environment that facilitates a community of lifelong learners and a future generation of leaders through rigorous instruction with high expectations in order to optimize students' fullest potential.

- **ACADEMIC HIGHLIGHTS:** Head Start, PreKindergarten, Positive Behavior Interventions and Supports (PBIS), Reading Intervention, Social and Emotional Learning, Tech Apps
- **SPECIALIZED CLASSROOMS:** Alternative Curriculum Environment (ACE), Early Childhood Special Education (ECSE)
- **FINE ARTS OFFERINGS:** Visual Arts, Elementary Music
- **EXTRACURRICULAR HIGHLIGHTS:** Spelling Bee, UIL Creative Writing and Storytelling, Safety Patrol
- **EXTENDED DAY PARTNER:** Boys & Girls Club of San Antonio
- **COMMUNITY PARTNERS:** San Antonio Youth Literacy (SAYL), 100 Black Men of San Antonio, Inc., Walmart

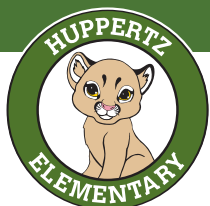
**Grades: PK – 5**

**2019 State Accountability:  
Rated Below C**

**School Start/End Times:  
8:10 a.m. - 3:20 p.m.**

Earliest Drop-off: 7:30 a.m.  
Latest Pick-up: 3:40 p.m.  
Extended Day 4:30 p.m.)

**School Uniform Color:  
Green, Yellow**



## Mary Frances Huppertz Elementary School

247 Bangor Drive, San Antonio, TX 78228 • (210) 438-6580 | [www.saisd.net/huppertz](http://www.saisd.net/huppertz)

At Huppertz Elementary School, we believe that every student can learn and achieve success at a high level. We aim to close the opportunity gap so that we can prepare all students for college, careers and life. At Huppertz, we stand for excellence, honor, and pride.

- **ACADEMIC HIGHLIGHTS:** Head Start, PreKindergarten, International Baccalaureate (IB), Advancement Via Individual Determination (AVID), Spanish, Social and Emotional Learning, Transdisciplinary Learning (emphasis on Inquiry Based Learning)
- **SPECIALIZED CLASSROOMS:** Early Childhood Special Education (ECSE)
- **FINE ARTS OFFERINGS:** Visual Arts, Elementary Music
- **EXTRACURRICULAR HIGHLIGHTS:** Chef/Cooking opportunities, Drama/Theatre Club, Recycling Club, Safety Patrol, Community Garden, New Innovative Playground
- **EXTENDED DAY PARTNER:** Greater San Antonio After-School All-Stars
- **COMMUNITY PARTNERS:** Junior Achievement, University of Texas San Antonio (UTSA), St. Mary's University, San Antonio Youth Literacy (SAYL)

**Grades: PK – 5**

**2019 State Accountability:  
Rated Below C**

**School Start/End Times:  
8:00 a.m. - 3:20 p.m.**

Earliest Drop-off: 7:30 a.m.  
Latest Pick-up: 3:40 p.m.  
(Extended Day 6:20 p.m.)

**School Uniform Color:  
White, Blue, Green**



**Choice Program Specialization:  
International Baccalaureate**



## George E. Kelly Elementary School

1026 W. Thompson Place, San Antonio, TX 78226 • (210) 228-3350 | [www.saisd.net/kelly](http://www.saisd.net/kelly)

At Kelly Elementary School, we believe that all students could learn successfully. We provide students with an educational experience that will produce productive global citizens and opportunities for students to engage in a variety of activities that nurture their interests.

- **ACADEMIC HIGHLIGHTS:** PreKindergarten, Master Teacher Tutorials, Social and Emotional Learning
- **SPECIALIZED CLASSROOMS:** Alternate Curriculum Environment (ACE)
- **FINE ARTS OFFERINGS:** Visual Arts, Elementary Music
- **EXTRACURRICULAR HIGHLIGHTS:** UIL Creative Writing and Storytelling, Lunch Bunch Book Club, Safety Patrol
- **EXTENDED DAY PARTNER:** Boys & Girls Club of San Antonio
- **COMMUNITY PARTNERS:** Boeing, Marriott, San Antonio Youth Literacy (SAYL)

**Grades: PK – 5**

**2019 State Accountability:  
B Rated**

**Distinction Designations:  
Math, Academic Growth**

**School Start/End Times:  
8:05 a.m. - 3:20 p.m.**

Earliest Drop-off: 7:20 a.m.  
Latest Pick-up: 3:30 p.m.  
Extended Day 4:30 p.m.)

**School Uniform Color:  
Green**





## Sarah S. King Elementary School

1001 Ceralvo St., San Antonio, TX 78207 • (210) 978-7990 | [www.saisd.net/kinges](http://www.saisd.net/kinges)

At Sarah King Elementary School, we believe we are preparing a new generation of students to become innovative leaders. We provide students with a quality education and programming that prepares them for graduation and success in higher education.

• **ACADEMIC HIGHLIGHTS:** Head Start, PreKindergarten, Dual Language

• **SPECIALIZED CLASSROOMS:** Alternative Curriculum Environment (ACE), Early Childhood Special Education (ECSE)

• **EXTRACURRICULAR HIGHLIGHTS:** Spelling Bee, Math Club, Dance Team/Club opportunities, Leadership Club, Safety Patrol, Running Club

• **EXTENDED DAY PARTNER:** Greater San Antonio After-School All-Stars

• **COMMUNITY PARTNERS:** City Year, UTSA

**Grades: PK – 5**

**2019 State Accountability:**  
**C Rated**

**School Start/End Times:**

**8:05 a.m. - 3:20 p.m.**

Earliest Drop-off: 7:25 a.m.

Latest Pick-up: 3:40 p.m.

(Extended Day 4:50 p.m.)

**School Uniform Color:**

White, Green



## Mirabeau B. Lamar Elementary School

201 Parland Place, San Antonio, TX 78209 • (210) 738-9800 | [www.saisd.net/lamares](http://www.saisd.net/lamares)

Our mission at Lamar Elementary School is to provide an educational program where all children reach their full potential by challenging them intellectually while building the social-emotional and self-advocacy skills needed to continue learning and to sustain our democracy.

• **ACADEMIC HIGHLIGHTS:** PreKindergarten, Dual Language, Project Based

Learning, Tiger Time - Socio Emotional Learning

• **SPECIALIZED CLASSROOMS:** Alternative Curriculum Environment (ACE)

• **FINE ARTS OFFERINGS:** Visual Arts, Band (6), Elementary Music

• **EXTRACURRICULAR HIGHLIGHTS:** Academic UIL, Gardening Club, Chess Club, Tiger TV

• **EXTENDED DAY PARTNER:** YMCA of Greater San Antonio

• **COMMUNITY PARTNERS:** Trinity University Partnership, First Baptist Church, Grace Fellowship, Snack Packs, Witte Museum, Botanical Garden, DoSeum, San Antonio Museum of Art, San Antonio Zoo

**Grades: PK – 6**

**2019 State Accountability:**  
**Rated Below C**

**School Start/End Times:**

**8:00 a.m. - 3:35 p.m.**

Earliest Drop-off: 7:15 a.m.

Latest Pick-up: 3:35 p.m.

(Extended Day 6 p.m.)

**School Uniform Color:**

White, Blue, Yellow, Black

**Choice Program Specialization:**  
Project-Based Learning



## James Madison Elementary School

2900 W. Woodlawn Ave., San Antonio, TX 78228 • (210) 438-6545 | [www.saisd.net/madisones](http://www.saisd.net/madisones)

At Madison Elementary School, our vision is to provide our students with a quality education and opportunities to socially meet the challenges of the world, grow as leaders, and become independent, lifelong learners. Our mission is to ensure student success by building relationships with our students, families, and community members through engaging activities.

• **ACADEMIC HIGHLIGHTS:** Head Start, PreKindergarten, Dual Language, Reading Intervention, Social and Emotional Learning

• **SPECIALIZED CLASSROOMS:** Alternative Curriculum Environment (ACE), Early Childhood Special Education (ECSE)

• **FINE ARTS OFFERINGS:** Visual Arts, Elementary Music

• **EXTRACURRICULAR HIGHLIGHTS:** UIL Creative Writing and Storytelling, Coding, Drum Ensemble, Safety Patrol, Ballet Folklorico

• **EXTENDED DAY PARTNER:** Boys & Girls Club of San Antonio

• **COMMUNITY PARTNERS:** Christ Episcopal Church, UTSA, St. Mary's, Our Lady of the Lake University (OLLU), San Antonio Youth Literacy (SAYL), District 7 Summer Snack Pack Program, Attendance Incentive Bike Give-Away

**Grades: PK – 5**

**2019 State Accountability:**  
**C Rated**

**School Start/End Times:**

**7:45 a.m. - 3:20 p.m.**

Earliest Drop-off: 7:15 a.m.

Latest Pick-up: 3:40 p.m.

(Extended Day 6 p.m.)

**School Uniform Color:**

White, Blue



## Antonio Margil Elementary School

1000 Perez Street. San Antonio, TX 78207 • (210) 738-9805 | [www.saisd.net/margiles](http://www.saisd.net/margiles)

At Antonio Margil Academy, we believe education is essential to a child's success. We provide a rigorous curriculum in which all students participate at a depth of knowledge that is challenging to them.

• **ACADEMIC HIGHLIGHTS:** PreKindergarten, Dual Language

• **SPECIALIZED CLASSROOMS:** Alternative Curriculum Environment (ACE), Early Childhood Special Education (ECSE)

• **FINE ARTS OFFERINGS:** Visual Arts, Band

• **EXTRACURRICULAR HIGHLIGHTS:** Book Club, Girl Zone, Lunch Bunch Book Club

• **EXTENDED DAY PARTNER:** YMCA of Greater San Antonio

• **COMMUNITY PARTNERS:** City Year, Lyft Fund, SA Youth, First Responders Mentorship, One Church, Pizza Hut Book It, SATX Social Rider Bike Club, HEB, San Antonio College, San Antonio Youth Literacy (SAYL), Communities in Schools

**Grades: PK – 5**

**2019 State Accountability:**  
**C Rated**

**Distinction Designation:**  
Science

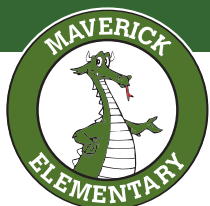
**School Start/End Times:**  
**8:05 a.m. - 3:20 p.m.**

Earliest Drop-off: 7:30 a.m.

Latest Pick-up: 3:30 p.m.

(Extended Day 6 p.m.)

**School Uniform Color:**  
White, Blue, Yellow



## Samuel A. Maverick Elementary School

107 Raleigh Place, San Antonio, TX 78201 • (210) 438-6550 | [www.saisd.net/maverickes](http://www.saisd.net/maverickes)

At Maverick Elementary School, we foster a community of learning that is student-centered. We value and teach problem solving, critical thinking, reflection, exploration, inquiry, growth mindset, tech literacy, and perseverance.

• **ACADEMIC HIGHLIGHTS:** Head Start, PreKindergarten, Dual Language, Positive Behavior Interventions and Supports (PBIS), Social and Emotional

Learning, EdTech Apps

• **SPECIALIZED CLASSROOMS:** Alternative Curriculum Environment (ACE), Early Childhood Special Education (ECSE)

• **FINE ARTS OFFERINGS:** Visual Arts, Elementary Music

• **EXTRACURRICULAR HIGHLIGHTS:** Book Club, Safety Patrol, Girls on the Run

• **EXTENDED DAY PARTNER:** Greater San Antonio After-School All-Stars

• **COMMUNITY PARTNERS:** PepsiCo, San Antonio Youth Literacy (SAYL), UTSA, Southwest School of Art, San Antonio OASIS, Morningside Ministries at The Manor, Junior Achievement, HEB, Northwest Lions Club of San Antonio, MacKenzie Restoration Inc., San Antonio Food Bank, San Antonio Public Library, Bibliotech

**Grades: PK – 5**

**2019 State Accountability:**  
**Rated Below C**

**School Start/End Times:**  
**8:05 a.m. - 3:20 p.m.**

Earliest Drop-off: 7:15 a.m.

Latest Pick-up: 3:30 p.m.

(Extended Day 6:15 p.m.)

**School Uniform Color:**  
White, Green



## Dorie Miller Elementary School

207 Lincolnshire Drive, San Antonio, TX 78220 • (210) 978-7995 | [www.saisd.net/milleres](http://www.saisd.net/milleres)

At Miller Elementary School, we believe that every community deserves a school where students are given the opportunity to learn and grow. Our amazing teachers use technology, flexible furniture, and flexible student groups to cater to student learning styles.

• **ACADEMIC HIGHLIGHTS:** PreKindergarten, Dual Language, Positive Behavior Interventions and Supports (PBIS)

• **SPECIALIZED CLASSROOMS:** Alternate Curriculum Environment (ACE)

• **FINE ARTS OFFERINGS:** Visual Arts, Elementary Music

• **EXTRACURRICULAR HIGHLIGHTS:** Spelling Bee, Student Council, American Heroes Club, UIL

• **EXTENDED DAY PARTNER:** Greater San Antonio After-School All-Stars

• **COMMUNITY PARTNERS:** San Antonio Rotary, Shriners, Communities in Schools, UTSA mentors, McDonalds

**Grades: PK – 5**

**2019 State Accountability:**  
**C Rated**

**Distinction Designation:**  
Math

**School Start/End Times:**  
**7:30 a.m. - 3:50 p.m.**

Earliest Drop-off: 7:30 a.m.

Latest Pick-up: 3:50 p.m.

(Extended Day 6:20 p.m.)

**School Uniform Color:**  
Navy Blue



## Elma A. Neal Elementary School

3407 Capitol Ave, San Antonio, TX 78201 • (210) 738-9810 | [www.saisd.net/neales](http://www.saisd.net/neales)

At Elma Neal Elementary School, we are relentless in the pursuit of our mission to mold students to become self-motivated learners. Neal provides students with a multicultural education which reflects the diversity of our city.

• **ACADEMIC HIGHLIGHTS:** Head Start, PreKindergarten, Dual Language, Social and Emotional Learning

- **SPECIALIZED CLASSROOMS:** Behavior Support Classroom (BSC)
- **FINE ARTS OFFERINGS:** Visual Arts, Elementary Music
- **EXTRACURRICULAR HIGHLIGHTS:** Book Club, Boy Scouts, Chess Club, Diversity Club, Art & Technology Club, Peer Mediation Club
- **EXTENDED DAY PARTNER:** YMCA of Greater San Antonio
- **COMMUNITY PARTNERS:** San Antonio Youth Literacy (SAYL), Junior Achievers, Fort Sam, San Antonio Food Bank

**Grades: PK – 5**

**2019 State Accountability:**  
**C Rated**

**Distinction Designation:**  
Reading

**School Start/End Times:**  
**8:00 a.m. - 3:20 p.m.**

Earliest Drop-off: 7:15 a.m.

Latest Pick-up: 3:45 p.m.

(Extended Day 6 p.m.)

**School Uniform Color:**

White, Black, Green, Yellow



## Ira C. Ogden Elementary School

2215 Leal St., San Antonio, TX 78207 • (210) 738-9815 | [www.saisd.net/ogdenes](http://www.saisd.net/ogdenes)

At Ogden Elementary School, our mission is to prepare our scholars for successful, fulfilling college lives or careers. Teaching and learning at Ogden takes a creative and distinct approach designed to have the greatest impact on student learning.

• **ACADEMIC HIGHLIGHTS:** PreKindergarten, Dual Language (PK-1st), Social Emotional Learning, Structured Classroom Environment to Support Academics,

Academically Rigorous Curriculum at each Grade Level

- **FINE ARTS OFFERINGS:** Visual Arts: Focus on Community Murals
- **EXTRACURRICULAR HIGHLIGHTS:** Chalk Up It! 4 year Winner, Community Murals, Leadership Lions, Friday small group individualized intervention/Tutoring/Extension, Gardening Club, UIL programs, Safety Patrol
- **EXTENDED DAY PARTNER:** Greater San Antonio After-School All-Stars
- **COMMUNITY PARTNERS:** Relay Lab Schools Texas, Christ the King Church, Snak Pak 4 Kids

in partnership with:

**RELAY/LAB SCHOOLS**

**Grades: PK – 5**

**2019 State Accountability:**  
**Rated Below C**

**School Start/End Times:**  
**7:30 a.m. - 3:15 p.m. (M-Th)**

**7:30 a.m. - 12:00 p.m. (Fri)**

Earliest Drop-off: 7:30 a.m.

Latest Pick-up: 4:15 p.m.

(Extended Day 6 p.m.)

**School Uniform Color:**

Black, Red



## John J. Pershing Elementary School

600 Sandmeyer St., San Antonio, TX 78208 • (210) 738-9820 | [www.saisd.net/pershinges](http://www.saisd.net/pershinges)

At Pershing Elementary School, we truly believe that it takes a village to raise a child and it takes a collective effort of faculty, staff, students, families and the community to support the growth in achievement we want to see in our students.

• **ACADEMIC HIGHLIGHTS:** PreKindergarten, Dual Language, Positive Behavior Interventions and Supports (PBIS), Reading Intervention, STEM/STEAM,

Advancement Via Individual Determination (AVID) for Elementary

- **SPECIALIZED CLASSROOMS:** Behavior Support Classroom (BSC)
- **FINE ARTS OFFERINGS:** Visual Arts, Elementary Music
- **EXTRACURRICULAR HIGHLIGHTS:** Reading Club, Student Council/Government
- **EXTENDED DAY PARTNER:** YMCA of Greater San Antonio
- **COMMUNITY PARTNERS:** Communities in Schools, Pearl Street Church, Fort Sam Houston Army North, Pearson

**Grades: PK – 6**

**2019 State Accountability:**  
**C Rated**

**School Start/End Times:**  
**8:05 a.m. - 3:20 p.m.**

Earliest Drop-off: 7:30 a.m.

Latest Pick-up: 3:30 p.m.

(Extended Day 6 p.m.)

**School Uniform Color:**

White, Green



## Riverside Park Elementary School

202 School St., San Antonio, TX 78210 • (210) 228-3355 | [www.saisd.net/riversideparkes](http://www.saisd.net/riversideparkes)

At Riverside Park Elementary School, our primary focus is to create an optimal learning experience for every student who attends our school. We offer Dual Language curriculum and instruction from PK all the way through middle school.

• **ACADEMIC HIGHLIGHTS:** PreKindergarten, Dual Language, Social and Emotional Learning

- **SPECIALIZED CLASSROOMS:** Alternative Curriculum Environment (ACE), Early Childhood Special Education (ECSE)
- **FINE ARTS OFFERINGS:** Visual Arts, Elementary Music, Elementary Strings (4-5)
- **EXTRACURRICULAR HIGHLIGHTS:** Gardening Club, Yearbook, Academic UIL programs
- **EXTENDED DAY PARTNER:** Greater San Antonio After-School All-Stars
- **COMMUNITY PARTNERS:** Riverside Neighborhood Association

**Grades: PK – 5**

**2019 State Accountability:**  
**Rated Below C**

**School Start/End Times:**  
**8:05 a.m. - 3:20 p.m.**

Earliest Drop-off: 7:30 a.m.  
Latest Pick-up: 3:20 p.m.  
(Extended Day 6 p.m.)

**School Uniform Color:**  
Blue



## Cleto L. Rodriguez Montessori Elementary School

3626 W. César E. Chávez Blvd., San Antonio, TX 78207 • (210) 978-8000 • [www.saisd.net/rodriguezmontessori](http://www.saisd.net/rodriguezmontessori)

At Rodriguez Montessori, we offer a multi-age, self-directed learning environment with a strong emphasis on creating independent individuals who show empathy and compassion. Children learn through hands-on activities and enjoy flexible learning spaces, including outdoors.

• **ACADEMIC HIGHLIGHTS:** PreKindergarten, Dual Language, Montessori, Multi-

Grade Classrooms

- **FINE ARTS OFFERINGS:** Visual Arts, Elementary Music
- **EXTRACURRICULAR HIGHLIGHTS:** Book Club, Chef/Cooking opportunities, Gardening Club
- **EXTENDED DAY PARTNER:** YMCA of Greater San Antonio

**Grades: PK – 2** (expanding to PK-5)

**2019 State Accountability:**  
**NA**

**School Start/End Times:**  
**7:30 a.m. - 0:00 p.m.**

Earliest Drop-off: 0:00 a.m.  
Latest Pick-up: 3:20 p.m.  
(Extended Day 6:30 p.m.)

**School Uniform Color:**  
Blue, White, Khaki and Black

**Choice Program Specialization:**  
Montessori, Dual Language



## Kate Schenck Elementary School

101 Kate Schenck Ave., San Antonio, TX 78223 • (210) 438-6865 | [www.saisd.net/schenckes](http://www.saisd.net/schenckes)

Schenck Elementary School is a neighborhood school that provides a supportive and caring environment where all students are capable of learning at high levels. We offer a student-centered instructional approach that encourages collaboration and critical thinking.

• **ACADEMIC HIGHLIGHTS:** Head Start, PreKindergarten, Dual Language

- **SPECIALIZED CLASSROOMS:** Alternative Curriculum Environment (ACE), Early Childhood Special Education (ECSE)
- **FINE ARTS OFFERINGS:** Visual Arts, Elementary Music
- **EXTRACURRICULAR HIGHLIGHTS:** Chef/Cooking opportunities
- **EXTENDED DAY PARTNER:** Boys & Girls Club of San Antonio
- **COMMUNITY PARTNERS:** Communities in Schools, ESL for Adults

**Grades: PK – 5**

**2019 State Accountability:**  
**A Rated**

**Distinction Designations:**  
Reading, Math, Science, Academic Growth, Closing Performance Gaps, Post Secondary Readiness

**School Start/End Times:**  
**7:20 a.m. - 3:20 p.m.**

Earliest Drop-off: 7:15 a.m.  
Latest Pick-up: 3:30 p.m.  
(Extended Day 6 p.m.)

**School Uniform Color:**  
White, Black, Grey, Khaki, Maroon





# John W. and Erastus Smith Elementary School

823 S. Gevers St., San Antonio, TX 78203 • (210) 228-3360 | [www.saisd.net/smithes](http://www.saisd.net/smithes)

At Smith Elementary School, we empower 21st century learners to be goal-oriented leaders who embrace emotional intelligence and impact the global community.

• **ACADEMIC HIGHLIGHTS:** PreKindergarten, Dual Language, Positive Behavior Interventions and Supports (PBIS)

- **SPECIALIZED CLASSROOMS:** Early Childhood Special Education (ECSE)
- **FINE ARTS OFFERINGS:** Visual Arts, Elementary Music
- **EXTRACURRICULAR HIGHLIGHTS:** Spelling Bee, Student Council/Government, Pep Squad, Safety Patrol, Ballet Folklorico
- **EXTENDED DAY PARTNER:** Greater San Antonio After-School All-Stars
- **COMMUNITY PARTNERS:** Assistance League, HEB, Holy Redeemer Catholic Church

**Grades: PK – 5**

**2019 State Accountability:**  
**Rated Below C**

**School Start/End Times:**

**8:05 a.m. - 3:20 p.m.**

Earliest Drop-off: 7:30 a.m.

Latest Pick-up: 3:20 p.m.

(Extended Day 6:20 p.m.)

**School Uniform Color:**

White, Blue, Yellow



# Ollie Perry Storm Elementary School

435 Brady Blvd., San Antonio, TX 78207 • (210) 978-8005 | [www.saisd.net/stormes](http://www.saisd.net/stormes)

At Storm Elementary School, our mission is to prepare scholars for successful, fulfilling college lives or careers. Teaching and learning at Storm take a creative and distinct approach designed to have the greatest impact on student learning.

• **ACADEMIC HIGHLIGHTS:** PreKindergarten, Dual Language (PK-1st), Social Emotional Learning, Structured classroom environment to support academics,

Academically rigorous curriculum (all grades)

- **FINE ARTS OFFERINGS:** Visual Arts
- **EXTRACURRICULAR HIGHLIGHTS:** Friday small group individualized intervention/Tutoring/Extension, Art Club opportunities, Chess Club, Soccer Club, UIL Creative Writing and Storytelling
- **EXTENDED DAY PARTNER:** Boys & Girls Club of San Antonio
- **COMMUNITY PARTNERS:** Relay Lab Schools Texas, San Juan Community Center

in partnership with: **RELAY/LAB SCHOOLS**

**Grades: PK – 5**

**2019 State Accountability:**  
**Rated Below C**

**School Start/End Times:**

**7:30 a.m. - 3:15 p.m. (M-Th)**

**7:30 a.m. - 12:00 p.m. (Fri)**

Earliest Drop-off: 7:25 a.m.

Latest Pick-up: 4:45 p.m.

(Extended Day 6 p.m.)

**School Uniform Color:**

White, Green



# Booker T. Washington Elementary School

1823 Nolan St., San Antonio, TX 78202 • (210) 738-9840 | [www.saisd.net/washingtunes](http://www.saisd.net/washingtunes)

At Washington Elementary School, we believe all students should have access to a rigorous and nurturing learning environment. We provide students with varied options to explore their academic potential and to expand their learning into the community.

• **ACADEMIC HIGHLIGHTS:** PreKindergarten, Dual Language, Positive Behavior Interventions and Supports (PBIS)

- **FINE ARTS OFFERINGS:** Visual Arts, Band (6), Elementary Music
- **EXTRACURRICULAR HIGHLIGHTS:** Spelling Bee, Chess Club, Gardening Club, Photography Club, Safety Patrol
- **EXTENDED DAY PARTNER:** Greater San Antonio After-School All-Stars
- **COMMUNITY PARTNERS:** SA Heals, Texas Capital Bank

**Grades: PK – 6**

**2019 State Accountability:**  
**C Rated**

**Distinction Designations:**

Reading, Academic Growth,  
Closing Performance Gaps

**School Start/End Times:**

**8:05 a.m. - 3:20 p.m.**

Earliest Drop-off: 7:30 a.m.

Latest Pick-up: 3:20 p.m.

(Extended Day 6 p.m.)

**School Uniform Color:**

White, Blue



## Woodrow Wilson Elementary School

1421 Clower St., San Antonio, TX 78201 • (210) 738-9845 | www.saisd.net/wilsons

At Wilson Elementary School, we partner with families and the community to ensure lifelong learning for our students. Our purpose is to empower and inspire our students through a quality education and provide opportunities that round out the educational experience and allow them to build leadership skills.

• **ACADEMIC HIGHLIGHTS:** PreKindergarten, Dual Language, Leadership, Master Teacher Tutorials

- **SPECIALIZED CLASSROOMS:** Alternative Curriculum Environment (ACE), Early Childhood Special Education (ECSE)
- **FINE ARTS OFFERINGS:** Visual Arts, Elementary Music
- **EXTRACURRICULAR HIGHLIGHTS:** Spelling Bee, Art Club opportunities, Dance Team/Club opportunities, Peer Assistance & Leadership (PALs), Safety Patrol
- **EXTENDED DAY PARTNER:** Greater San Antonio After-School All-Stars
- **COMMUNITY PARTNERS:** HEB, 7-11, Destiny Church, Insurance Ladies of Texas, Irma's Angles, Salvation Army, San Antonio Food Bank, World Car Mazda

**Grades: PK – 5**

**2019 State Accountability: C Rated**

**School Start/End Times: 8:05 a.m. - 3:20 p.m.**

Earliest Drop-off: 7:30 a.m.

Latest Pick-up: 3:20 p.m.

(Extended Day 6:20 p.m.)

**School Uniform Color:**  
White, Black, Red, Khaki



## Woodlawn Hills Elementary School

110 W. Quill Drive, San Antonio, TX 78228 • (210) 438-6565 | www.saisd.net/woodlawnhills

At Woodlawn Hills Elementary School, we believe in a student-centered, supportive learning environment, where students are excited to collaborate with each other. The dedication of our teachers and exceptional classroom instruction help our Woodlawn Hills Trojans succeed.

• **ACADEMIC HIGHLIGHTS:** PreKindergarten, Dual Language, International Baccalaureate (IB), Positive Behavior Interventions and Supports (PBIS), Project Based Learning, Reading Intervention, Robotics, Social and Emotional Learning

- **SPECIALIZED CLASSROOMS:** Alternate Curriculum Environment (ACE)
- **FINE ARTS OFFERINGS:** Visual Arts, Elementary Music
- **EXTRACURRICULAR HIGHLIGHTS:** TSpelling Bee, Reading Club, Chef/Cooking opportunities, Drum Ensemble, Girl Scouts, International Mindedness, Lunch Bunch Book Club, Makerspace Sessions, Safety Patrol, Cheer, iPlay (sports)
- **EXTENDED DAY PARTNER:** YMCA of Greater San Antonio
- **COMMUNITY PARTNERS:** St. Mary's University, UTSA, San Antonio Youth Literacy (SAYL), San Antonio OASIS, SAFD (Firehouse #27), SAPD, Northwest Lions Club of San Antonio, San Antonio Public Library, HEB, Olive Garden, La Michoacana, Communities in Schools

in partnership with:



**Grades: PK – 5**

**2019 State Accountability: Rated Below C**

**School Start/End Times: 8:00 a.m. - 3:20 p.m.**

Earliest Drop-off: 7:30 a.m.

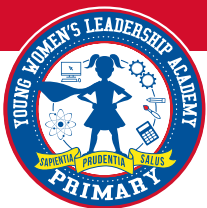
Latest Pick-up: 3:20 p.m.

(Extended Day 6 p.m.)

**School Uniform Color:**  
White, Navy Blue



**Choice Program Specialization:**  
International Baccalaureate



## YWLA Primary at Page

401 Berkshire Ave., San Antonio, TX 78210 • (210) 554-2710 | www.saisd.net/ywlaprimary

The Young Women's Leadership Academy: Primary is San Antonio's first public, all-girls, K-5 school with focuses on STEAM (science, technology, engineering, the arts, and math), social-emotional learning, and college preparation.

• **ACADEMIC HIGHLIGHTS:** Leadership, Social and Emotional Learning, STEM/STEAM, Single Gender

- **FINE ARTS OFFERINGS:** Visual Arts, Elementary Music
- **EXTRACURRICULAR HIGHLIGHTS:** Dance Team/Club opportunities, Drama/Theatre Club opportunities, Gardening Club, Pep Squad
- **EXTENDED DAY PARTNER:** Boys & Girls Club of San Antonio
- **COMMUNITY PARTNERS:** The Witte Museum, Girl Scouts of South Texas, Young Women's Preparatory Network, Girls, Inc., Gardopia Gardens

in partnership with:



**Grades: K – 3** (expanding to K-5)

**2019 State Accountability: NA**

**School Start/End Times: 8:00 a.m. - 3:30 p.m.**

Earliest Drop-off: 7:15 a.m.

Latest Pick-up: 4:00 p.m.

(Extended Day 6 p.m.)

**School Uniform Color:**  
White, Red, Blue - Special uniform to include a white blouse and plaid jumper

**Choice Program Specialization:**  
STEAM, Single Gender





# Early Childhood Education

**Early Childhood Education Centers** are full-day learning laboratories for 3- and 4-year-old children, which provide the Head Start program and/or the District's pre-kindergarten program.

CARROLL ECEC

GONZALES ECEC

KNOX ECEC

NELSON ECEC

TYNAN ECEC







# Henry Carroll Early Childhood Education Center

in partnership with:



463 Holmgreen Road, San Antonio, TX 78220 • (210) 978-7965 | [www.saisd.net/carrollecec](http://www.saisd.net/carrollecec)

At Carroll Early Childhood Education Center, we use Highscope curriculum in which teachers ignite children's interest in learning by creating an environment that encourages them to explore learning materials and interact with peers and adults.

• **ACADEMIC HIGHLIGHTS:** Head Start, Dual Language

- **SPECIALIZED CLASSROOMS:** Early Childhood Special Education (ECSE)
- **FINE ARTS OFFERINGS:** Visual Arts (KG - 2), Elementary Music (KG - 2)
- **EXTRACURRICULAR HIGHLIGHTS:** (AFTER SCHOOL) Power Hour Enrichment
- **EXTENDED DAY PARTNER:** YMCA of Greater San Antonio; Afterschool Enrichment Program (for 4 year olds)
- **COMMUNITY PARTNERS:** UIW, City of San Antonio, YMCA of Greater San Antonio

**Grades: Head Start – 2**

**2019 State Accountability:**  
**B Rated**

**School Start/End Times:**  
**7:30 a.m. - 2:30 p.m.**

Earliest Drop-off: 7:00 a.m.  
Latest Pick-up: 3:00 p.m.  
(Extended Day 6 p.m.)

**School Uniform Color:**  
Blue, White



# Rafael Gonzales Early Childhood Education Center

518 E. Magnolia Ave., San Antonio, TX 78212 • (210) 438-6830 | [www.saisd.net/gonzalesecec](http://www.saisd.net/gonzalesecec)

At Gonzales Early Childhood Education Center, we provide a strong educational foundation for young learners, consisting of a high-quality, developmentally appropriate early childhood education to meet the emotional, social, physical and academic needs of all the children in our program.

• **ACADEMIC HIGHLIGHTS:** Head Start, PreKindergarten, Dual Language

- **SPECIALIZED CLASSROOMS:** Bilingual Early Childhood Special Education (ECSE)
- **COMMUNITY PARTNERS:** The University of Texas at Austin, UTSA, Region 20, San Antonio Public Library

**Grades: Head Start, PK3 – PK4**

**2019 State Accountability:**  
**Rated Below C**

**School Start/End Times:**  
**7:30 a.m. - 2:30 p.m.**

Earliest Drop-off: 7:00 a.m.  
Latest Pick-up: 2:45 p.m.

**School Uniform Color:**  
White, Blue

**Choice Program Specialization:**  
Early Childhood



# William J. Knox Early Childhood Education Center

302 Tipton Ave., San Antonio, TX 78204 • (210) 228-3365 | [www.saisd.net/knoxeccec](http://www.saisd.net/knoxeccec)

At Knox Early Childhood Education Center, we provide students with educational experiences through play, extend their learning through field experiences, and nurture their individuality through positive connections in a safe and loving environment.

• **ACADEMIC HIGHLIGHTS:** Head Start, Dual Language, Reading Intervention

- **SPECIALIZED CLASSROOMS:** Early Childhood Special Education (ECSE)
- **COMMUNITY PARTNERS:** UTSA, Texas A&M University - San Antonio, Magik Theatre

**Grades: Head Start**

**2019 State Accountability:**  
**B Rated**

**School Start/End Times:**  
**7:30 a.m. - 2:30 p.m.**

Earliest Drop-off: 7:00 a.m.  
Latest Pick-up: 2:45 p.m.  
(Extended Day 6 p.m.)

**School Uniform Color:**  
Blue, White



# Pauline Nelson Early Childhood Education Center

1014 Waverly Ave., San Antonio, TX 78201 • (210) 438-6555 | [www.saisd.net/nelsonecec](http://www.saisd.net/nelsonecec)

At Pauline Nelson Early Childhood Education Center, we believe in hands-on, child-centered learning. We provide students with experiences focused on developing them academically, physically and socially.

• **ACADEMIC HIGHLIGHTS:** Head Start, Dual Language, Social and Emotional Learning, STEM/STEAM

• **SPECIALIZED CLASSROOMS:** Early Childhood Special Education (ECSE)

• **COMMUNITY PARTNERS:** The University of Texas at Austin, Dynamic Innovation for Young Children (DIFYC), Texas A&M University, UTSA, San Antonio Public Library, HEB

**Grades: Head Start**

**2019 State Accountability:  
Rated Below C**

**School Start/End Times:  
7:30 a.m. - 2:30 p.m.**

Earliest Drop-off: 7:00 a.m.  
Latest Pick-up: 2:45 p.m.

(Extended Day 6 p.m.)

**School Uniform Color:  
White, Green**



# Elizabeth Tynan Early Childhood Education Center

in partnership with:



925 Gulf St., San Antonio, TX 78202 • (210) 738-9835 | [www.saisd.net/tynanecec](http://www.saisd.net/tynanecec)

At Tynan Early Childhood Education Center, we focus on supporting early learners (PK3-PK4) as they make decisions, build academic skills, develop socially and emotionally, and become part of a classroom community.

• **ACADEMIC HIGHLIGHTS:** Head Start, Dual Language, Master Teacher Tutorials, Positive Behavior Interventions and Supports (PBIS), Social and Emotional Learning

• **SPECIALIZED CLASSROOMS:** Early Childhood Special Education (ECSE)

• **EXTRACURRICULAR HIGHLIGHTS:** After School Enrichment Program (ASEP)

• **COMMUNITY PARTNERS:** Center for New Communities, Harvard Place/East Lawn Neighborhood Association, Family Services Association, East Side Promise Neighborhood, UTSA, UIW, University Health System, SAPD, SAFD, HEB, San Antonio Food Bank, Dental Quest, Baptist Health System, San Antonio Library, Metro Health System, Goodwill

**Grades: Head Start**

**2019 State Accountability:  
A Rated**

**School Start/End Times:  
7:30 a.m. - 2:30 p.m.**

Earliest Drop-off: 7:00 a.m.  
Latest Pick-up: 3:00 p.m.

(Extended Day 6 p.m.)

**School Uniform Color:  
Blue, White**



# Schools By Referral

**Schools By Referral** are educational settings designed to better accommodate the specific needs of some students.

---

BREWER ACADEMY

COOPER ACADEMY AT NAVARRO

ESTRADA ACHIEVEMENT CENTER

HEALY-MURPHY LEARNING CENTER

TEXANS CAN ACADEMY AT HIGHLANDS HIGH SCHOOL

---







## Raymond H. Brewer Academy

906 Merida St., San Antonio, TX 78207 • (210) 438-6825

At Brewer Academy, we serve students receiving special education services who are experiencing significant emotional and behavioral disorders and provide an environment that encourages students to develop their intellectual, linguistic, social, emotional, civic and physical abilities.

- **ACADEMIC HIGHLIGHTS:** Social and Emotional Learning, Extensive individualized instruction, Therapeutic educational services, Life Skills, Specialized curriculum
- **SPECIALIZED CLASSROOMS:** Special Education Campus
- **FINE ARTS OFFERINGS:** Art

**Grades: 6 – 12**

**2019 State Accountability:**  
**NA**

**School Start/End Times:**  
**8:15 a.m. - 3:45 p.m.**  
Earliest Drop-off: 8:15 a.m.  
Latest Pick-up: 4:00 p.m.



## James Fenimore Cooper Academy at Navarro

623 S. Pecos St., San Antonio, TX 78207 • (210) 438-6810 | [www.saisd.net/cooperacademy](http://www.saisd.net/cooperacademy)

We provide students with the opportunity to earn their high school diploma. We provide services to students between the ages of 15 and 25.

- **ACADEMIC HIGHLIGHTS:** Dual credit, Industry certifications, Job training, CNA, AP and 2D Art, Edgenuity Credit Attainment and Credit Recovery, Pre-AP, Advanced Placement (AP) (offerings vary by campus)
- **EXTRACURRICULAR HIGHLIGHTS:** Students may participate in UIL activities at their home school according to address.
- **ATHLETIC OFFERINGS:** Students may participate in Athletics at their home school according to address.

**Grades: 9 – 12**

**2019 State Accountability:**  
**Rated Below C**

**School Start/End Times:**  
**8:30 a.m. - 4:00 p.m.**  
Earliest Drop-off: 7:45 a.m.  
Latest Pick-up: 4:30 p.m.

**School Uniform Color:**  
No Uniform



## Estrada Achievement Center

1112 S. Zarzamora St., San Antonio, TX 78207 • (210) 438-6820 | [www.saisd.net/estradaac](http://www.saisd.net/estradaac)

Estrada Achievement Center is the DAEP (Disciplinary Alternative Education Program) campus for SAISD. We serve students in grades 6-12. We provide instruction for the following core subject areas; ELA, Mathematics, Social Studies and Science. We also offer Edgenuity for students that need credit recovery. We do not offer any elective courses at the DAEP.

- **ACADEMIC HIGHLIGHTS:** Disciplinary alternative education program (DAEP), restorative discipline, Social and Emotional Learning, RISE Program

**Grades: 6 – 12**

**2019 State Accountability:**  
**Not Rated**

**School Start/End Times:**  
**7:30 a.m. - 3:33 p.m.**  
Earliest Drop-off: 7:30 a.m.  
Latest Pick-up: 3:30 p.m.

**School Uniform Color:**  
Gray polos, Khaki pants



# Healy-Murphy Center

618 Live Oak St., San Antonio, TX 78202 • High School and GED: (210) 223-2944  
Child Development Center: (210) 224-9569 • [www.healymurphy.org/](http://www.healymurphy.org/)

The mission of Healy-Murphy Center is to provide compassionate service to youth-in-crisis by focusing on individualized education in a non-traditional setting, early childhood development and essential support services.

• **ACADEMIC HIGHLIGHTS:** Self-paced classes, Flexible schedules, Reading skills development, Career guidance, Daycare for parenting students, Health and wellness clinic, Support groups, Job placement assistance

• **FINE ARTS OFFERINGS:** Art, Photography

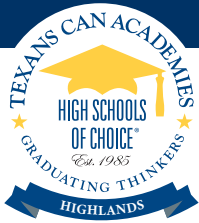
• **ATHLETIC OFFERINGS:** Basketball

**Grades: 9 – 12**

**2019 State Accountability:  
Rated Below C**

**School Start/End Times:  
8:06 a.m. - 3:06 p.m.**

**No Uniform**



# Texans Can Academy at Highlands High School

in partnership with:



3118 Elgin Ave., San Antonio, TX 78210 • (210) 426-6808  
[www.texanscan.org/schools-and-programs/highlands/](http://www.texanscan.org/schools-and-programs/highlands/)

This specialized school is for students who are behind their cohorts one or more years and are interested in going into a program with more extensive support to get back on track to graduate.

• **ACADEMIC HIGHLIGHTS:** Half day scheduling, Social and Emotional Learning, Credit recovery

• **EXTRACURRICULAR HIGHLIGHTS:** Students may participate in UIL activities at Highlands High School.

• **ATHLETIC OFFERINGS:** Students may participate in Athletics at their home school according to address.

• **COMMUNITY PARTNERS:** Graduation Alliance

**Grades: 9 – 12**

**2019 State Accountability:  
Rated Below C**

**Morning Session  
7:45 a.m. - 12:30 p.m.**

**Afternoon Session  
1:00 a.m. - 4:45 p.m.**

**School Uniform Color:**  
Maroon, White, Gray or Black  
Texans Can polo, Khaki or Black pants





# Resources

DISTRICT MAP

FEEDER PATTERNS

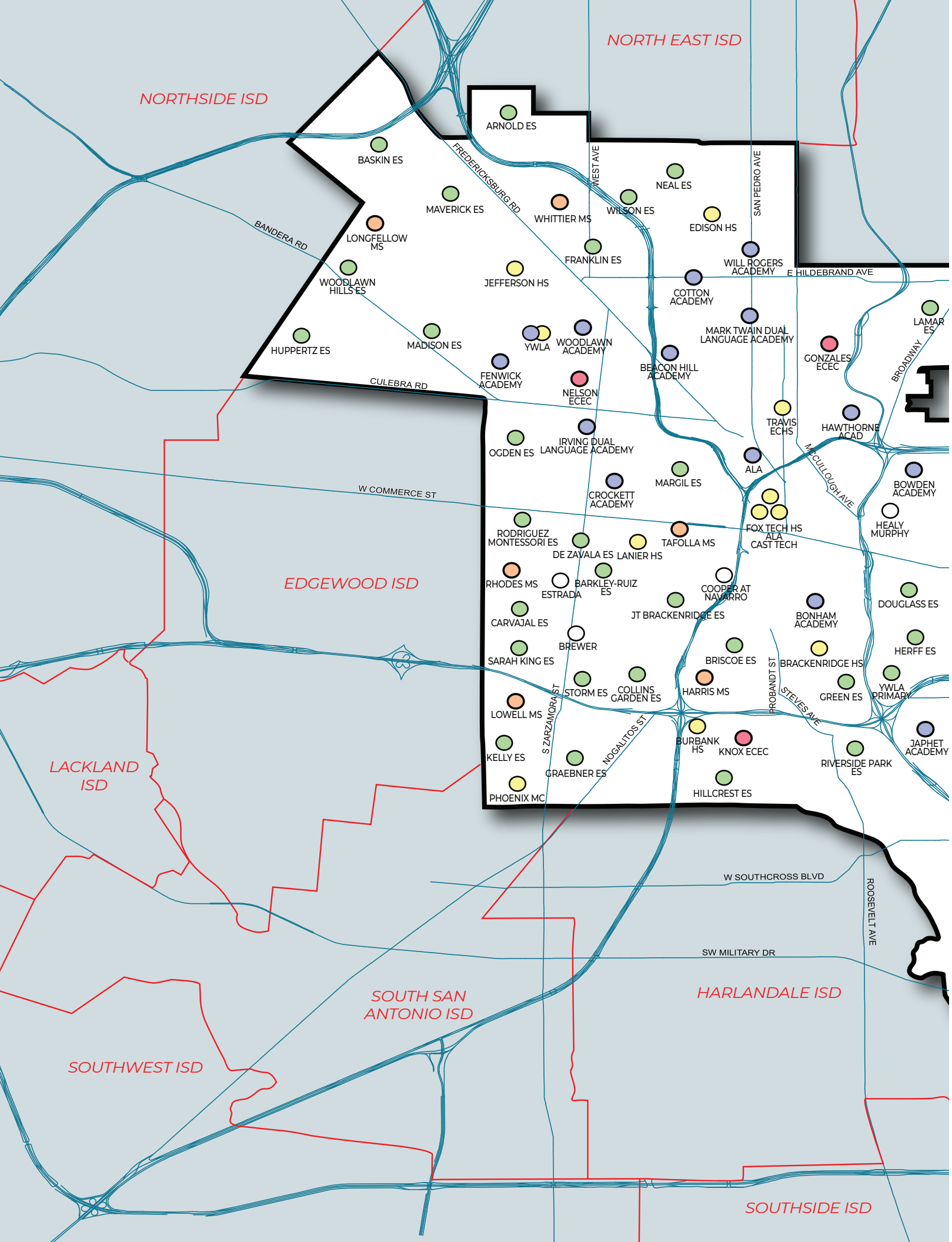
BOND 2020

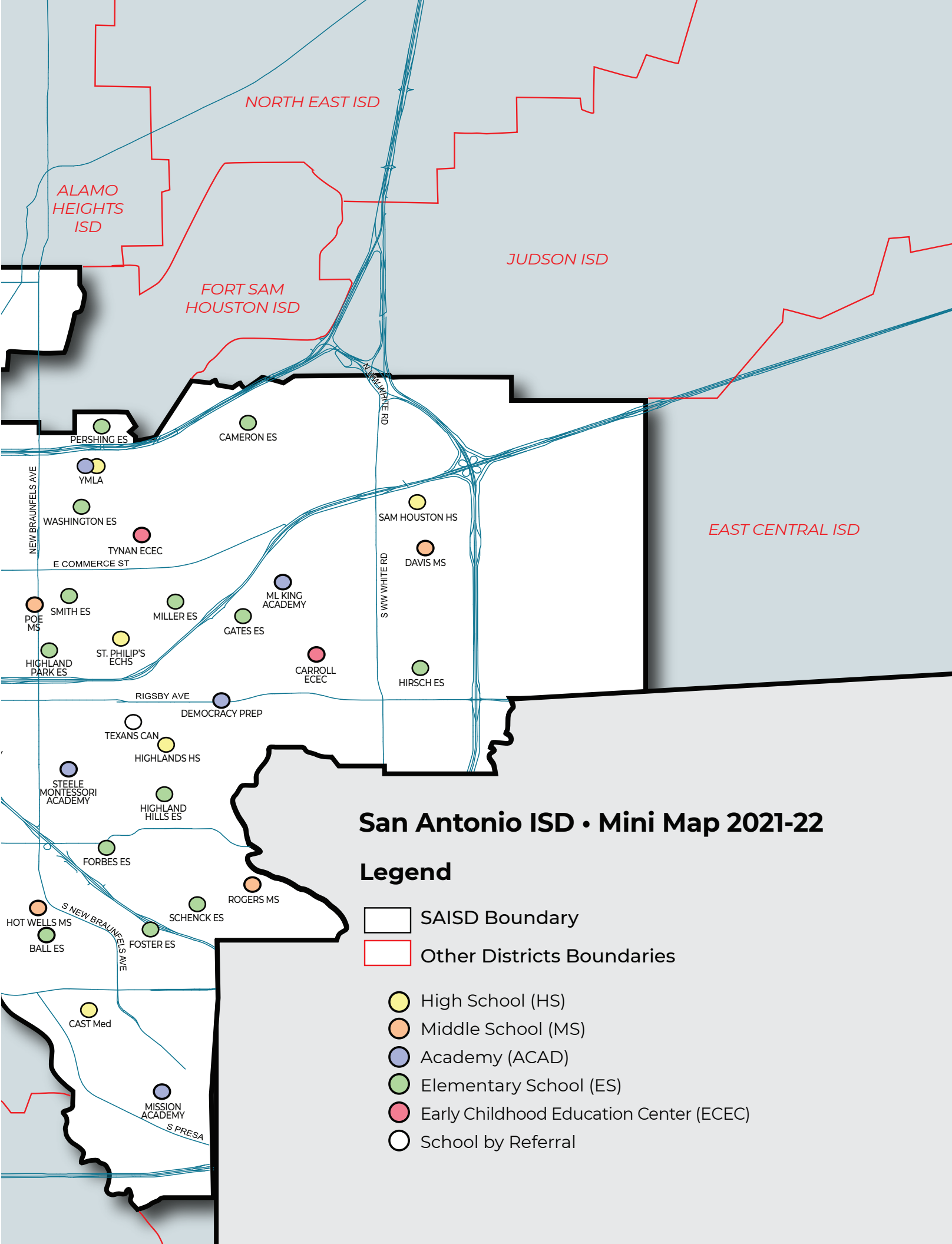
INDEX OF SCHOOLS

IMPORTANT CONTACTS














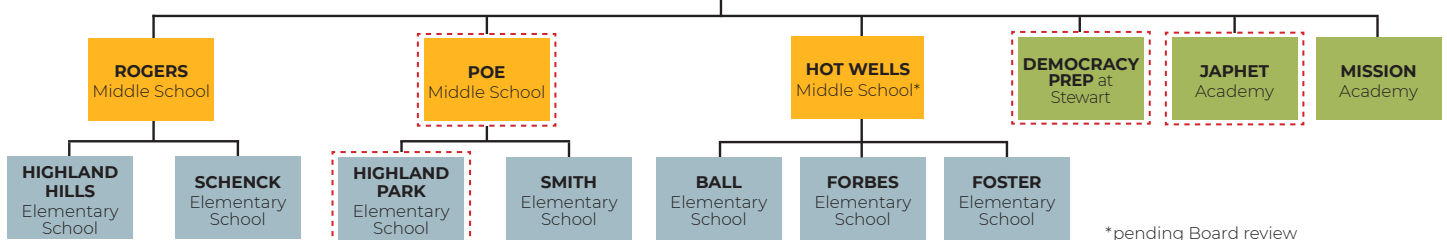
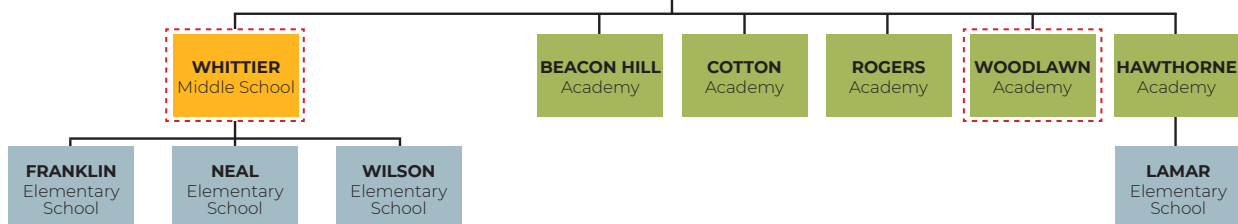
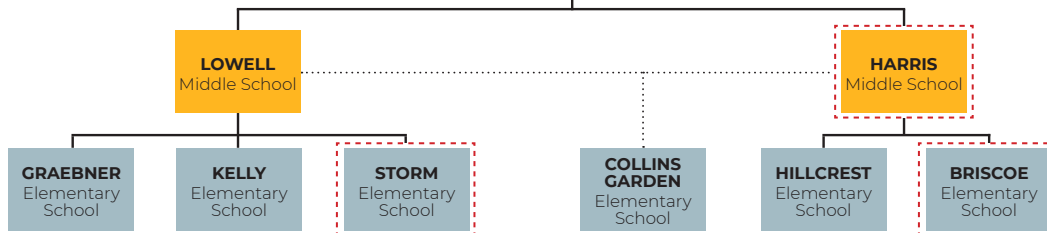
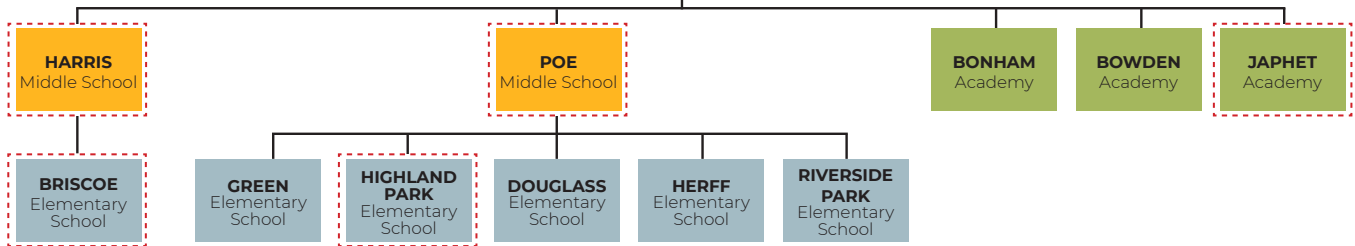


# San Antonio ISD • Mini Map 2021-22

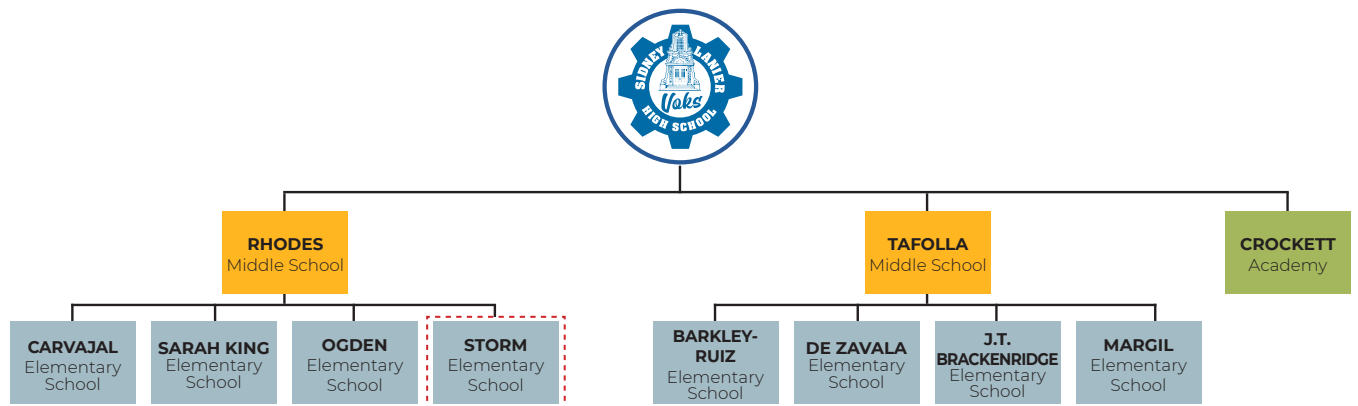
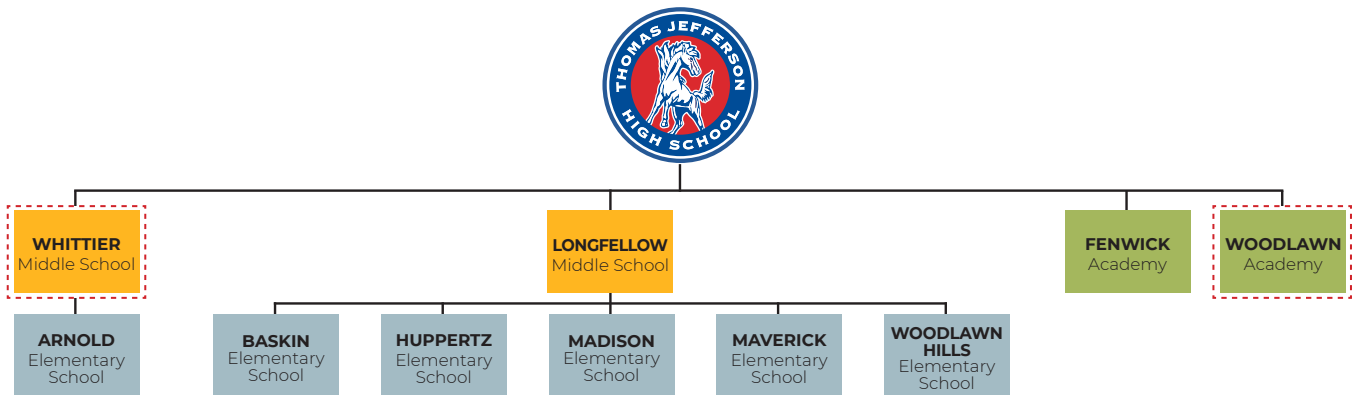
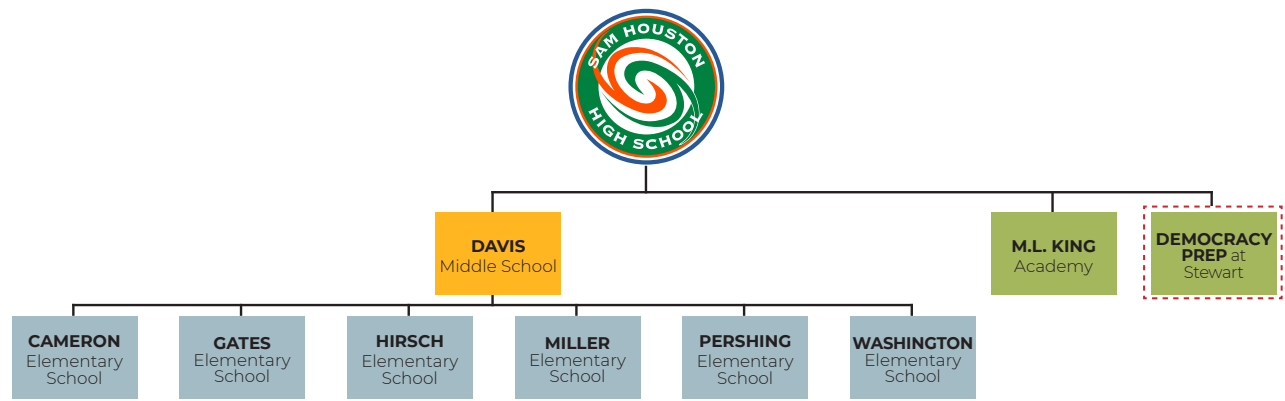
## Legend

-  SAISD Boundary
-  Other Districts Boundaries
-  High School (HS)
-  Middle School (MS)
-  Academy (ACAD)
-  Elementary School (ES)
-  Early Childhood Education Center (ECEC)
-  School by Referral






# 2021-2022 Feeder Patterns



\*pending Board review



### COLOR CODES:

-  = **HIGH SCHOOLS** (grades 9-12)
-  = **MIDDLE SCHOOLS** (grades 6-8)
-  = **ACADEMIES** (grades PK-8)  
*All grades are not available at all campuses*
-  = **ELEMENTARY SCHOOLS** (Head Start-5/6)  
*Head Start and PK3 not available at all campuses*
-  = **SPLIT FEEDER PATTERN**  
*Feeds into more than one school*

### NON-ATTENDANCE ZONE SCHOOLS

- Advanced Learning Academy
- Carroll ECEC
- CAST Med High School
- CAST Tech High School
- Fox Tech High School
- Gonzales ECEC
- Irving Dual Language Academy
- Knox ECEC
- Nelson ECEC
- Rodriguez Montessori Elementary
- St. Philip's Early College High School
- Steele Montessori Academy
- Travis Early College High School
- Twain Dual Language Academy
- Tynan ECEC
- Young Men's Leadership Academy
- Young Women's Leadership Academy
- YWLA Primary at Page





## **SAISD's Historic Bond Passes. Every School Benefits.**

**Thank you SAISD community for investing in  
your family of neighborhood schools.**

Bond 2020 is a \$1.3 billion program involving 36 campuses. This includes 21 schools whose main buildings have not been fully renovated in more than 50 years, most of which have 30-year-old infrastructure. In addition, funds will go toward the final phase to complete campus renovations at 15 schools that received partial renovations under Bond 2016 or Bond 2010.



Learn all about all the exciting improvements, from facility to  
technology upgrades at **[bond.saisd.net](http://bond.saisd.net)**

# Index of Schools

## ■ High Schools

Advanced Learning Academy (PK-12)	18
Brackenridge HS (9-12)	18
Burbank HS (9-12)	18
CAST Med HS (9-11)	19
CAST Tech HS (9-12)	19
Cooper Academy at Navarro (9-12)	19
Edison HS (9-12)	20
Fox Tech HS (9-12)	20
Healy-Murphy Center (9-12)	20
Highlands HS (9-12)	21
Sam Houston HS (9-12)	21
Jefferson HS (9-12)	21
Lanier HS (9-12)	22
Phoenix Middle College (11-12)	22
St. Philip's ECHS (9-12)	22
Texans Can Academy at Highlands HS (9-12)	23
Travis ECHS (9-12)	23
Young Men's Leadership Academy (4-12)	23
Young Women's Leadership Academy (6-12)	24

## ■ Middle Schools

Davis MS (6-8)	26
Harris MS (6-8)	26
Hot Wells MS (6-8)	26
Longfellow MS (6-8)	27
Lowell MS (6-8)	27
Poe MS (6-8)	27
Rhodes MS (6-8)	28
Rogers MS (6-8)	28
Tafolla MS (6-8)	28
Whittier MS (6-8)	29

## ■ Academies (Non-traditional grade ranges)

Advanced Learning Academy (PK-12)	32
Beacon Hill Academy (PK-8)	32
Bonham Academy (K-8)	32
Bowden Academy (PK-8)	33
Cotton Academy (PK-8)	33
Crockett Academy (PK-8)	33
Democracy Prep at the Stewart Campus (PK-8)	34
Fenwick Academy (PK-8)	34
Hawthorne Academy (K-8)	34
Irving Dual Language Academy (PK-8)	35
Japhet Academy (PK-8)	35
M.L. King Academy (K-8)	35
Mission Academy (PK-8)	36
Will Rogers Academy (PK-8)	36
Steele Montessori Academy (PK-5)	36
Mark Twain Dual Language Academy (PK-7)	37
Woodlawn Academy (K-8)	37
Young Men's Leadership Academy (4-12)	37
Young Women's Leadership Academy (6-12)	38

## ■ Elementary Schools

Arnold Elementary (PK-5)	40
Ball Elementary (PK-5)	40

Barkley-Ruiz Elementary (PK-5)	40
Baskin Elementary (PK-5)	41
J.T. Brackenridge Elementary (PK-5)	41
Briscoe Elementary (PK-5)	41
Cameron Elementary (PK-5)	42
Carvajal Elementary (Head Start & K-5)	42
Collins Garden Elementary (PK-5)	42
De Zavala Elementary (PK-5)	43
Douglass Elementary (PK-5)	43
Forbes Elementary (PK-5)	43
Foster Elementary (PK-5)	44
Franklin Elementary (PK-5)	44
Gates Elementary (PK-6)	44
Graebner Elementary (PK-5)	45
Green Elementary (PK-5)	45
Herff Elementary (PK-5)	45
Highland Hills Elementary (PK-5)	46
Highland Park Elementary (PK-5)	46
Hillcrest Elementary (PK-5)	46
Hirsch Elementary (PK-5)	47
Huppertz Elementary (PK-5)	47
Kelly Elementary (PK-5)	47
Sarah King Elementary (PK-5)	48
Lamar Elementary (PK-6)	48
Madison Elementary (PK-5)	48
Margil Elementary (PK-5)	49
Maverick Elementary (PK-5)	49
Miller Elementary (PK-5)	49
Neal Elementary (PK-5)	50
Ogden Elementary (PK-5)	50
Pershing Elementary (PK-6)	50
Riverside Park Elementary (PK-5)	51
Rodriguez Montessori Elementary (PK-2)	51
Schenck Elementary (PK-5)	51
Smith Elementary (PK-5)	52
Storm Elementary (PK-5)	52
Washington Elementary (PK-6)	52
Wilson Elementary (PK-5)	53
Woodlawn Hills Elementary (PK-5)	53
YWLA: Primary at Page (K-3)	53

## ■ Early Childhood Education Centers

Carroll ECEC (Head Start-2)	56
Gonzales ECEC (Head Start & PK3-PK4)	56
Knox ECEC (Head Start)	56
Nelson ECEC (Head Start)	57
Tynan ECEC (Head Start)	57

## ■ Schools by Referral

Brewer Academy (6-12)	60
Cooper Academy at Navarro (9-12)	60
Estrada Achievement Center (6-12)	60
Healy-Murphy Center (9-12)	61
Texans Can Academy at Highlands HS (9-12)	61

# IMPORTANT CONTACTS

SAISD Enrollment Office  
**(210) 554-2660**

Head Start/Pre-Kindergarten  
**(210) 554-2410**

Extended Day Program  
**(210) 554-2620**

Homeless/Foster Student Services  
**(210) 554-2635**

International Welcome Center  
**(210) 554-2592**

SAISD Customer Experience Center & Parent Hotline  
**(210) 554-2210**

School Meals  
**(210) 554-2290**

Social Services  
**(210) 554-2635**

Disability and Learning Support Services  
**(210) 354-9565**

Student Health Services  
**(210) 554-2435**

Transportation Services  
**(210) 223-9792**

Uniform Assistance  
**(210) 554-2635**



**SAN ANTONIO  
INDEPENDENT SCHOOL DISTRICT**

514 W. Quincy Street, San Antonio, Texas 78212

[www.saisd.net](http://www.saisd.net)