



CONNECTED   
**BEYOND**  
THE CLASSROOM 

In Partnership with :  
**City of San Antonio**  
**Texas A&M – San Antonio**

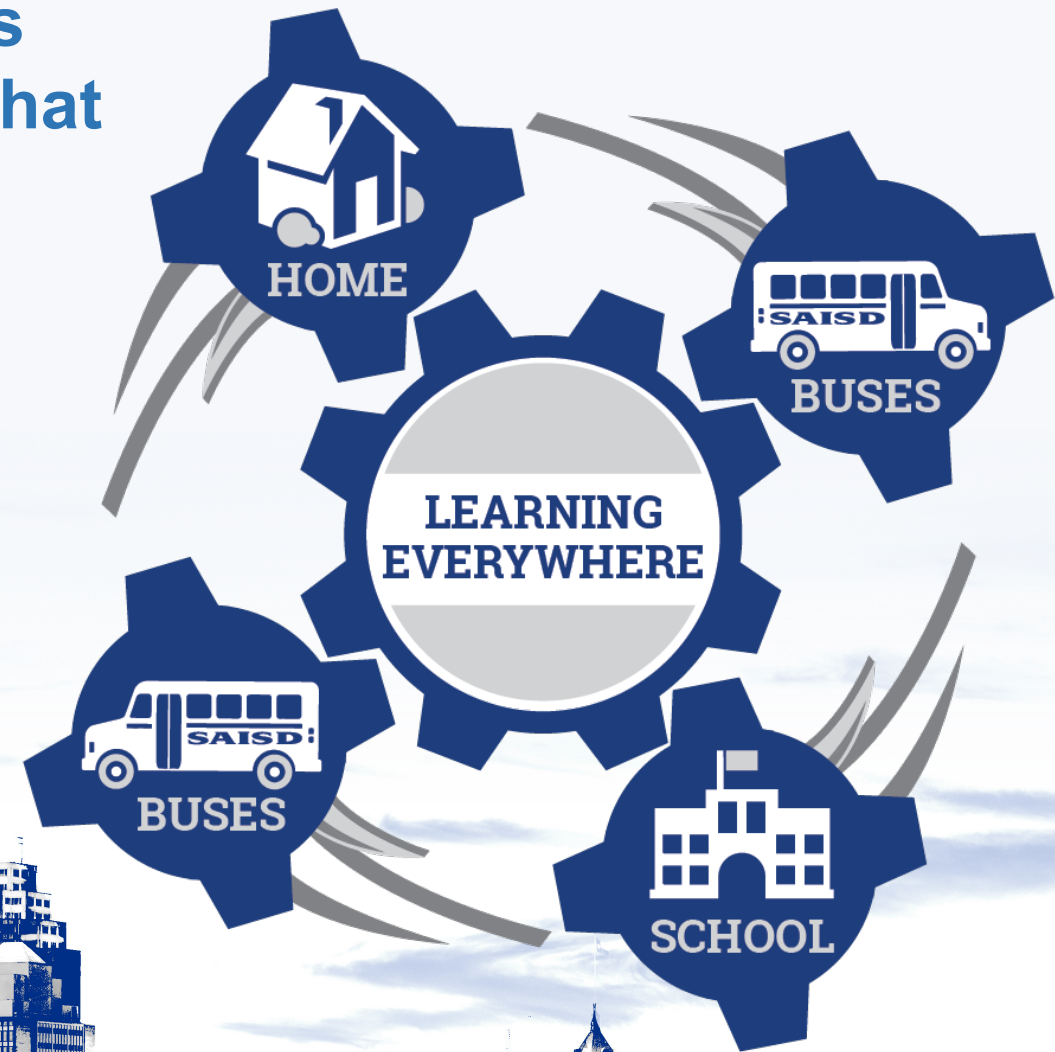


# The Technology Department's vision has been to create a technology environment that allows for “Learning Everywhere”

During the height of Covid to make this possible there was a mass deployment of Hotspot devices

**16,827** HOTSPOTS  
DEPLOYED

But there is a more stable option now ...



**About twenty percent of San Antonio households do not have access to broadband internet in the home there by creating disparities between those that are connected and those that are not.**

The City of San Antonio is committed to help tackle these systemic disparities through the **Connected Beyond The Classroom** initiative.



According to the 2020 Digital Inclusion Survey and Assessment (DISA)

On September 22, 2020, Councilman Pelaez, Chair of the Innovation and Technology Committee, provided an update to the city on the initial pilot program of the Connected Beyond the Classroom and announced a timeline of expansion of the pilot.

**"At the onset of the COVID-19 pandemic, we got the ball rolling on a plan to help students impacted by the digital divide by connecting them with remote access to their school's LTE Wi-Fi network."**

**". . . The Connected Beyond the Classroom initiative is emblematic of the City of San Antonio's commitment to equity and inclusion and our collective fight against the digital divide."**

#### June 2020

- Business Case Built
- User Requirements Identified by 50 Priority Neighborhoods

#### July 2020

Planning with Independent School Districts and Alamo Community College.

#### August - September 2020

- Vendor Bids
- Contract Planning

#### October 2020 - May 2021

- Pilot preparation
- Assessment
- Implementation

#### January - July 2021

Expand to additional neighborhoods within Proof of Concept.

#### June - December 2021

Continue expanding to remaining neighborhoods.





## City of San Antonio Goals for the Connected Beyond The Classroom Initiative



Improve Digital  
Equity



Coverage for up to  
20,000 students



Safe web  
filtering



Effective speeds for  
distance learning



Leverage Collective  
Capabilities



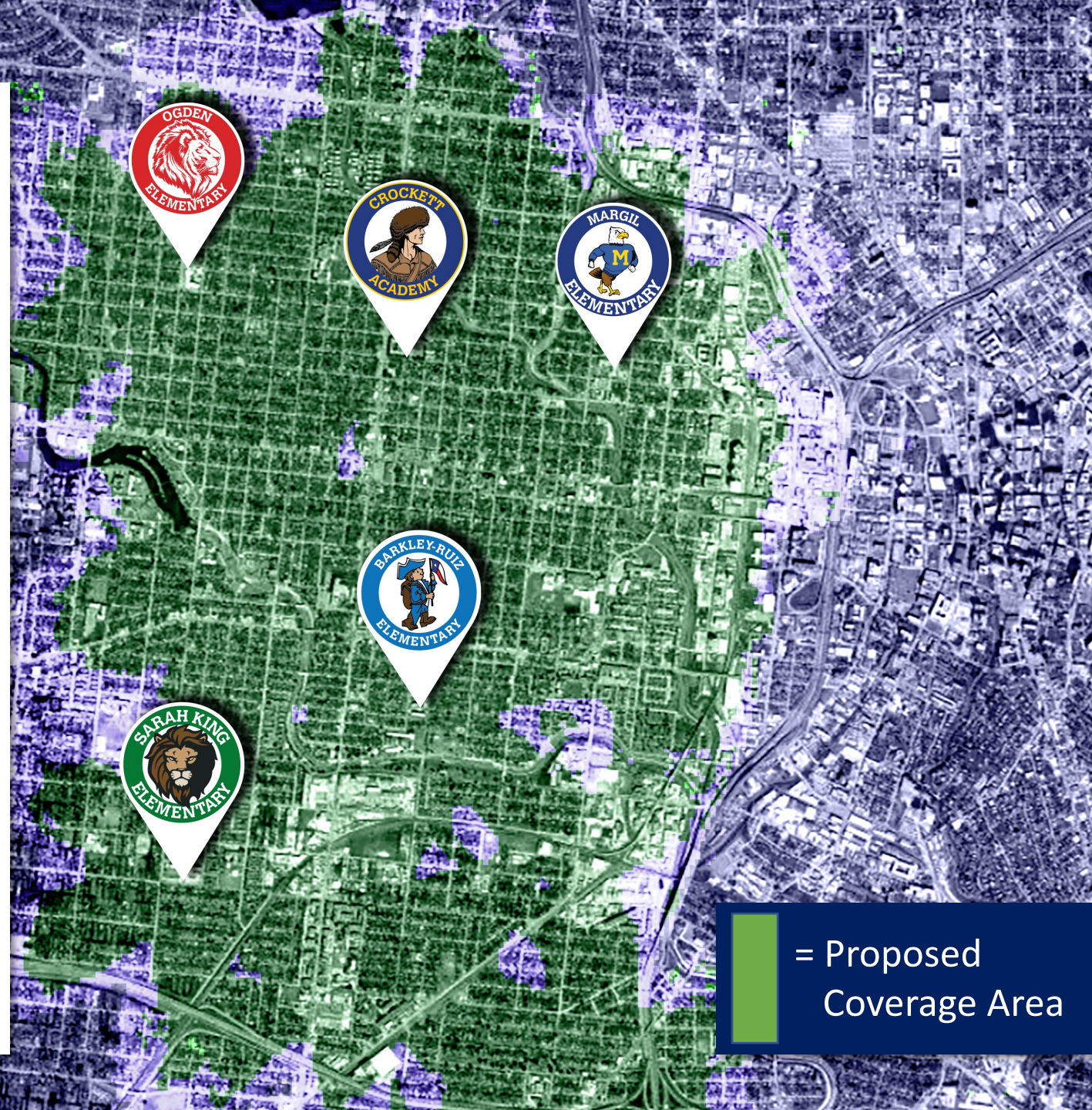
With the addition of these 5 towers and other city locations (park/fire stations) there will be

# 7,935 students

in the coverage area.

## Top 20 Campuses represented:

ALA at Fox Tech	107	Irving DL	275
Barkley/Ruiz	278	Jefferson	151
Burbank	349	JT Brackenridge	348
Carvajal	242	Lanier	1,135
Collins Garden	280	Margil	342
Crockett	597	Ogden	271
De Zavala	333	Rhodes	373
Fenwick	116	S. King	477
G.W. Brackenridge	103	Storm	258
Harris	125	Tafolla	638





Please contact your campus for  
program information or home  
connectivity options.

