

**BOND 2016**

**CITIZENS ADVISORY COMMITTEE  
(CAC)**

---

Wednesday, July 18, 2018  
Central Office Board Room  
6:00 PM

# AGENDA

Bond Master Schedule

Bond Project Status

Bowden Academy

Burbank High School

Rogers Middle School

Question & Answer

Closing Remarks



# RECAP

Update on 2016 Bond Program

**Contractor Selection**

Bond Master Schedule

**Project Advisory Team Meetings**

Bond project updates



# Contractor Selection

Construction Managers have received their contracts for signature.

► **Bartlett Cocke General Contractors**

**Edison HS, Fox Tech HS, Jefferson HS, Irving Academy**

Architects are meeting with Construction Managers.

► **Gilbane Building Company**

**Lanier HS, Rogers MS, Tafolla MS**

► **Joeris General Contractors**

**G.W. Brackenridge HS, Houston HS, Davis MS**

► **Morganti Texas/Casias JV**

**Burbank HS, J.T. Brackenridge ES, Bowden Academy**



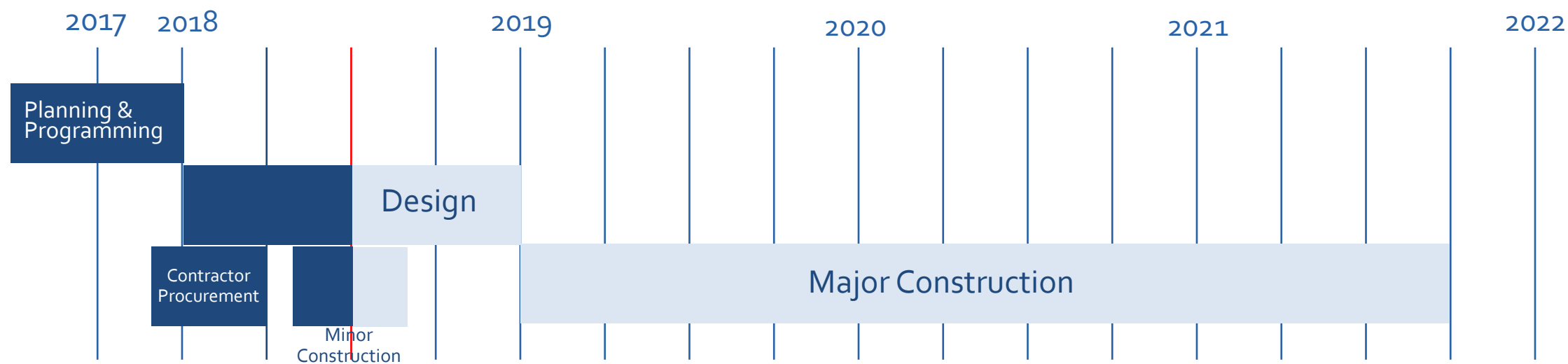
# Project Advisory Team Meetings

Each project will hold a Project Advisory Team (PAT) Meeting at the conclusion of the Programming and Planning Phase.

The Project Advisory Team is selected by each campus Principal to reflect their school community. The PAT consists of

- Campus Principal
- 5-6 Campus faculty/staff
- 5-6 Parents/Community members
- 3-4 Students (at the HS level)

# SCHEDULE



# Status update

Project	Schematic Design Status	Design Development Status	Construction Documents
G.W. Brackenridge HS	Complete	60%	
Burbank HS	Complete	60%	
Edison HS	Complete	60%	
Fox Tech HS	80%		
Sam Houston HS	Complete	Complete	25%
Jefferson HS	80%		
Lanier HS	Complete	60%	
Davis MS	Complete	75%	
Irving Academy	Complete	75%	
Rogers MS	90%		
Tafolla MS	50%		
J.T. Brackenridge ES	Complete	Complete	50%
Bowden Academy	Complete	Complete	50%

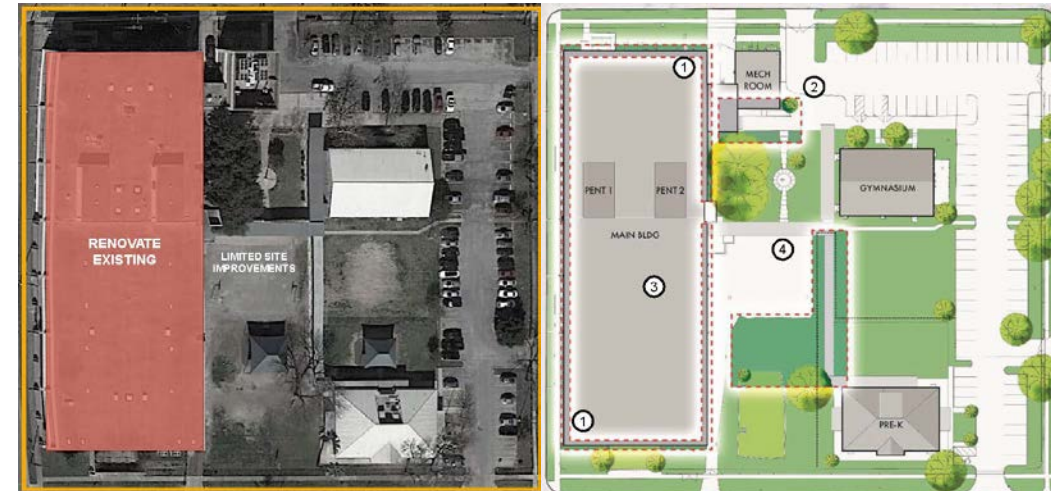


# Bond Update – Bowden Academy

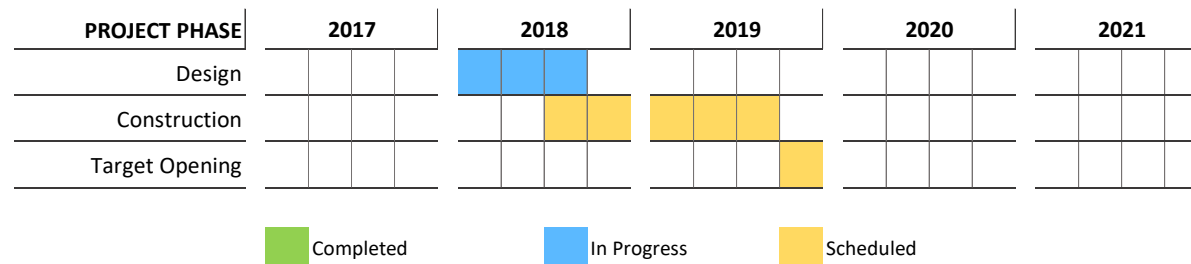
**Board Member** Steve Lecholop  
**Architect** VLK  
**Construction Manager** Morganti Texas/ Casias JV

**Bond scope** – Renovations and upgrades include, but not limited to:

- Classroom spaces (general learning, science, art, music, special education)
- Restrooms
- Cafeteria/kitchen
- Stage
- Heating, ventilation and air conditioning
- Plumbing and electrical
- Technology infrastructure for classrooms, labs and other instructional spaces
- Lighting
- Fire sprinkler systems
- Special needs accessibility in entryways, restrooms, and other areas
- Front-entry modifications to improve security
- Roofing, building exterior and site improvements



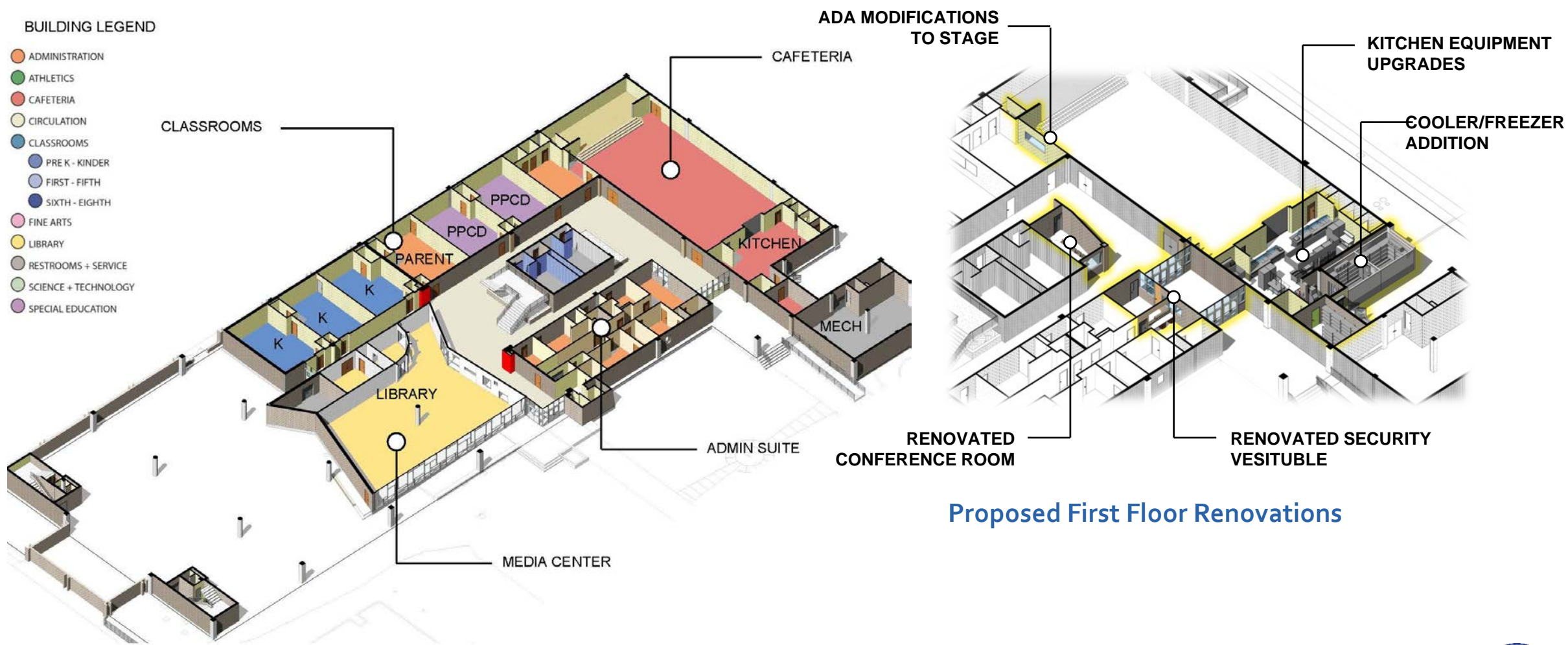
**Project status:** Design Development phase complete



Budget Description	Budget	Committed Costs	Cost to Date	Uncommitted Costs
Construction	\$8,752,072			\$8,752,072
Soft Costs	\$1,218,643	\$624,473	\$90,946	\$594,170
FFE	\$332,357			\$332,357
Technology	\$110,786			\$110,786
Contingency	\$664,714			\$664,714
<b>Project Total</b>	<b>\$11,078,573</b>	<b>\$624,473</b>	<b>\$90,946</b>	<b>\$10,454,099</b>



# Bond Update – Bowden Academy

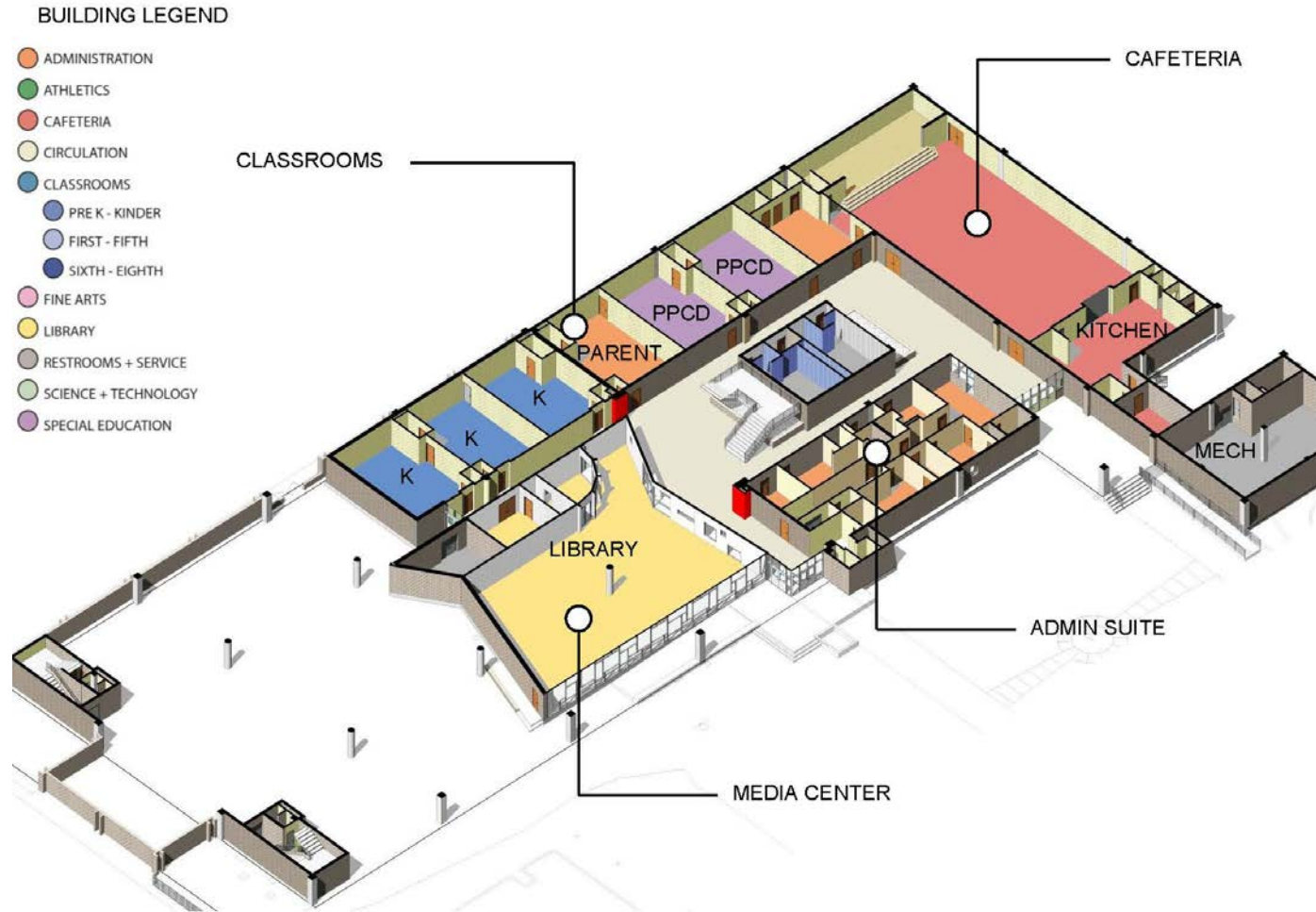


Existing First Floor Plan

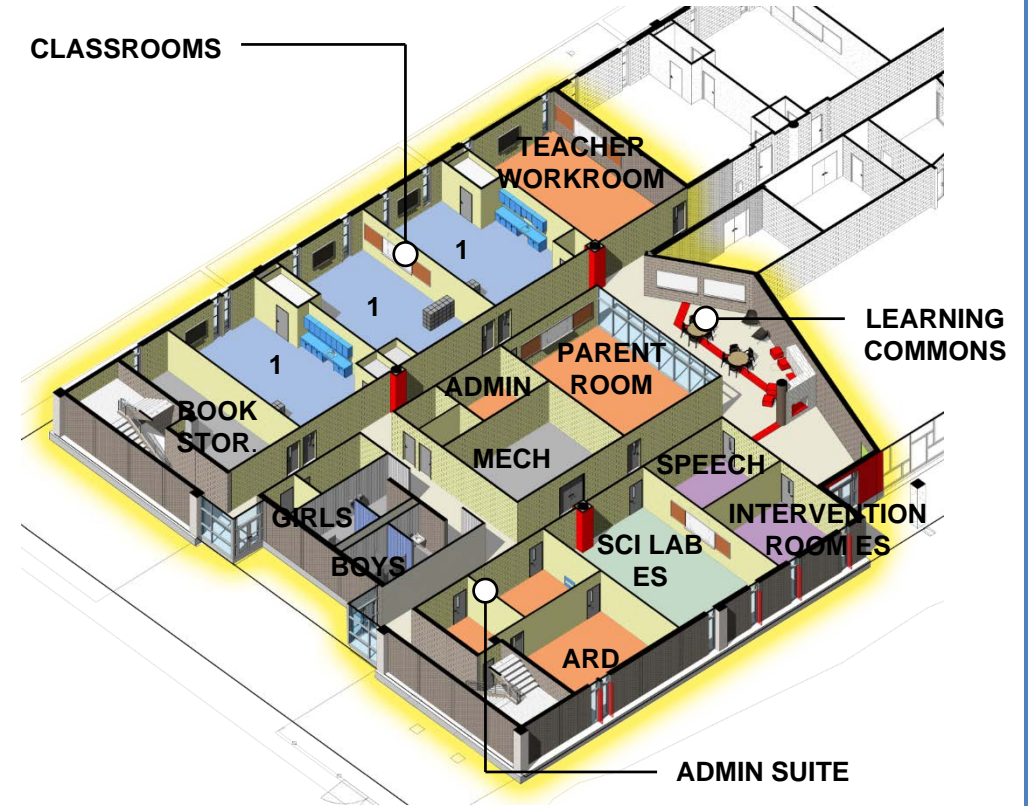




# Bond Update – Bowden Academy



Existing First Floor Plan



Proposed First Floor Infill

# Bond Update – Bowden Academy



Proposed Learning Commons

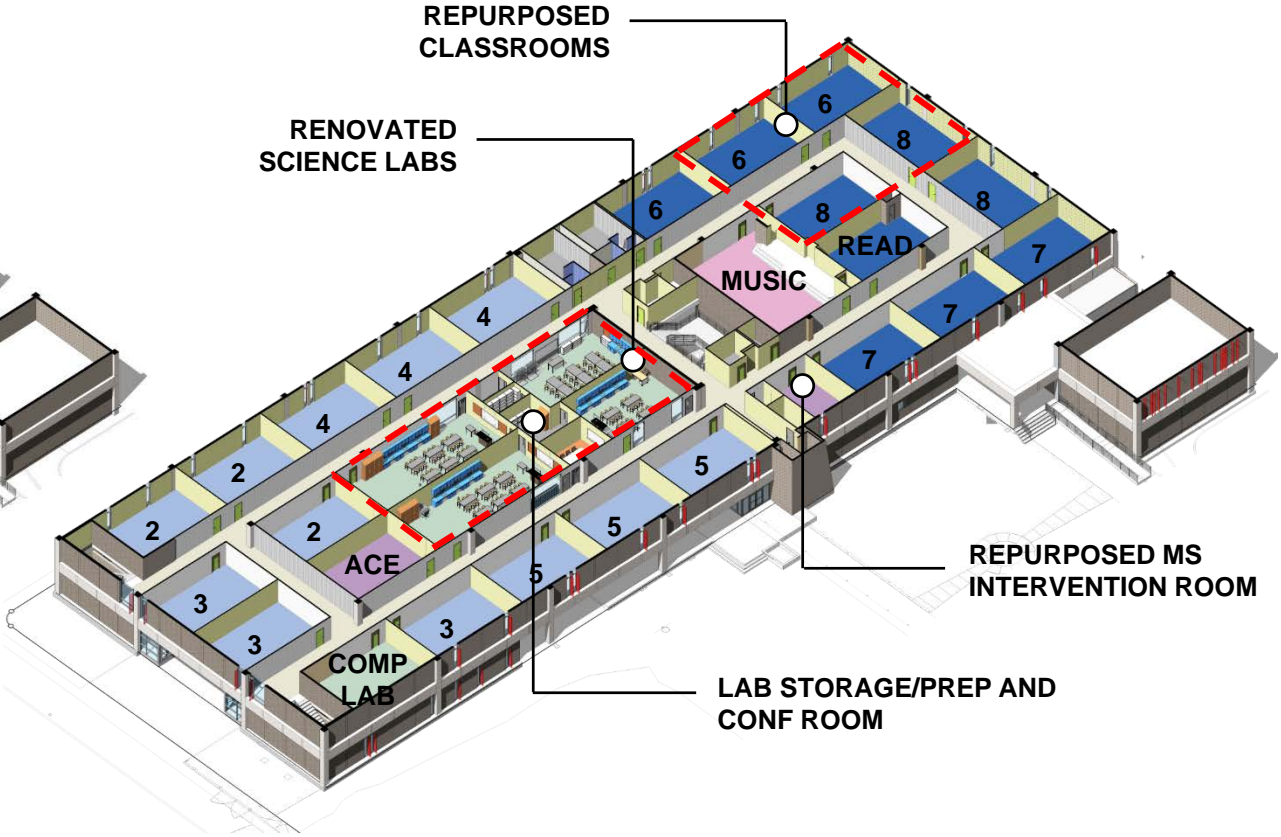
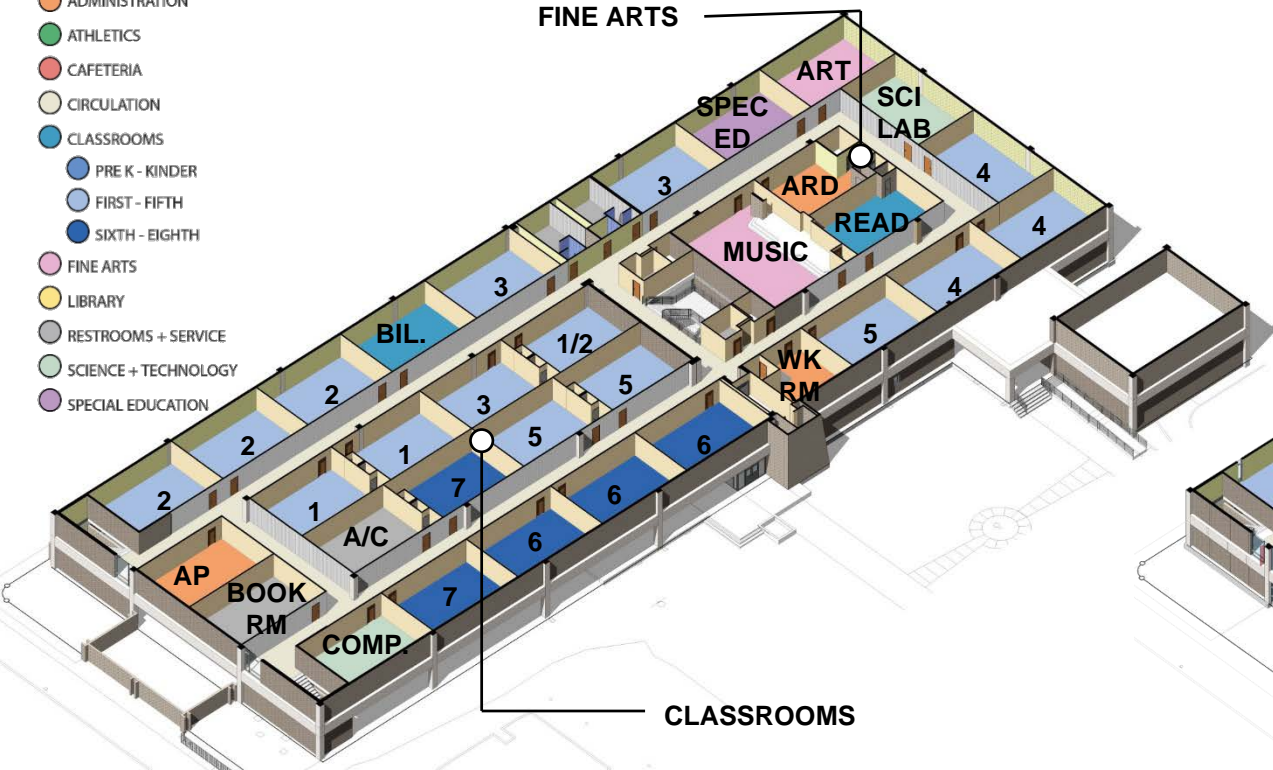




# Bond Update – Bowden Academy

## BUILDING LEGEND

- ADMINISTRATION
- ATHLETICS
- CAFETERIA
- CIRCULATION
- CLASSROOMS
  - PRE K - KINDER
  - FIRST - FIFTH
  - SIXTH - EIGHTH
- FINE ARTS
- LIBRARY
- RESTROOMS + SERVICE
- SCIENCE + TECHNOLOGY
- SPECIAL EDUCATION



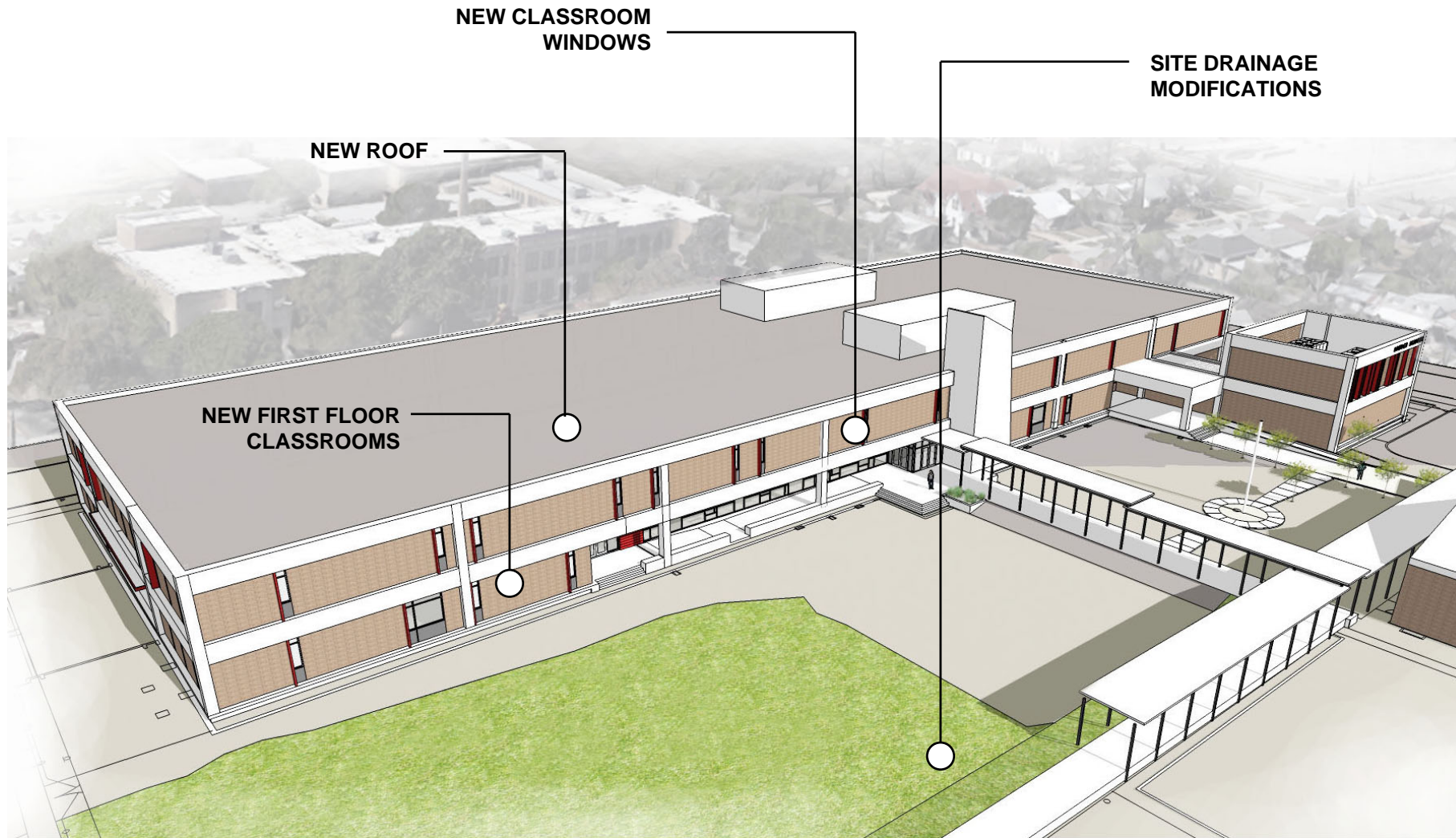
Existing Second Floor Plan

Proposed Second Floor Plan





# Bond Update – Bowden Academy

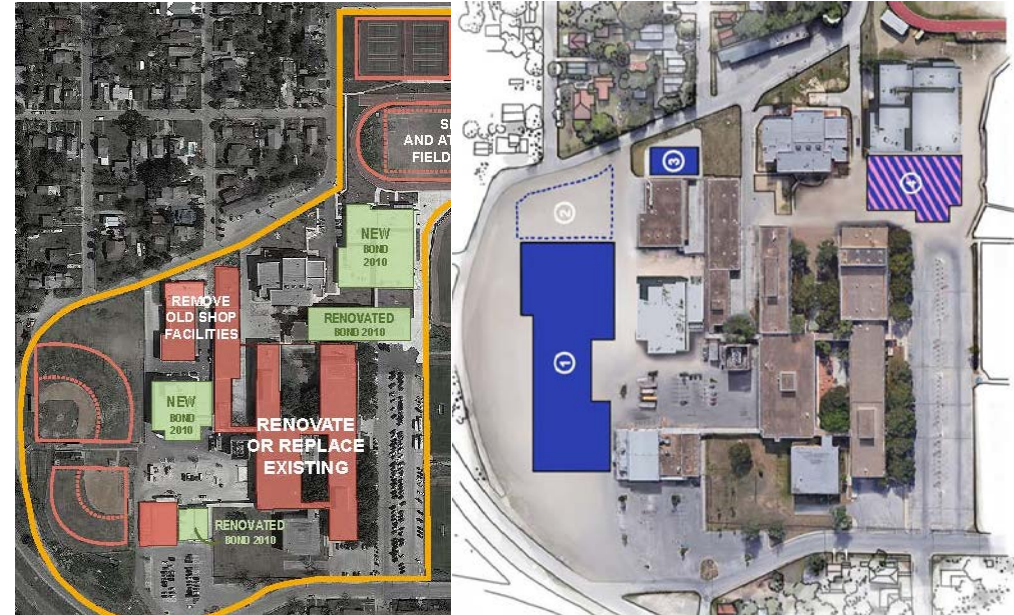


# Bond Update – Burbank HS

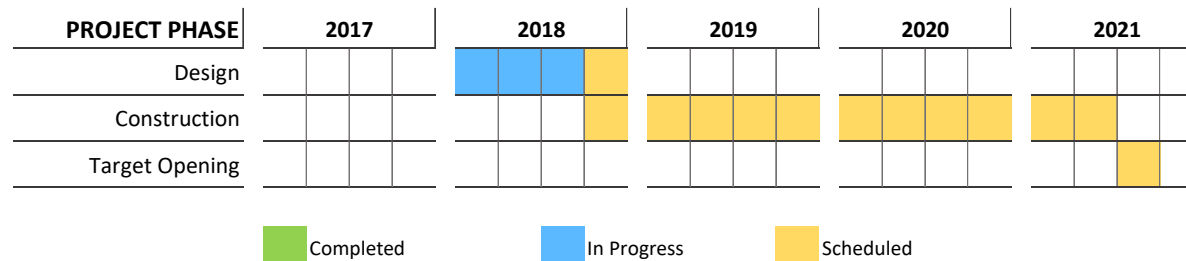
**Board Member** Arthur Valdez  
**Architect** Garza Bomberger  
**Construction Manager** Morganti Texas/Casias JV

**Bond scope** – Renovations and upgrades include, but not limited to:

- Replace classroom buildings (general learning, science labs, special education)
- Heating, ventilation and air conditioning
- Auditorium and drama spaces
- Cafeteria/kitchen
- Black Box Theatre
- Administration/New Front Door
- Plumbing and electrical
- Technology infrastructure for new and renovated spaces
- Lighting
- Fire sprinkler systems
- Special needs accessibility in entryways, restrooms, and other areas
- Remodel special education classrooms
- Athletic track resurfacing
- Address preservation and documentation of mural artwork in cafeteria
- Roofing and exteriors of renovated buildings and site improvements



**Project status:** Schematic Design phase complete



Budget Description	Budget	Committed Costs	Cost to Date	Uncommitted Costs
Construction	\$62,757,343			\$62,757,343
Soft Costs	\$8,738,364	\$3,506,890	\$171,760	\$5,231,475
FFE	\$2,383,190			\$2,383,190
Technology	\$794,397			\$794,397
Contingency	\$4,766,381			\$4,766,381
Project Total	\$79,439,675	\$3,506,890	\$171,760	\$75,932,785





# Bond Update – Burbank HS



Proposed Site Plan



Proposed New 3-story Main Building

# Bond Update – Burbank HS



Proposed First Floor Plan



# Bond Update – Burbank HS



Proposed Second Floor Plan

# Bond Update – Burbank HS



Proposed Third Floor Plan



# Bond Update – Burbank HS



Draft Interior Rendering

# Bond Update – Rogers MS

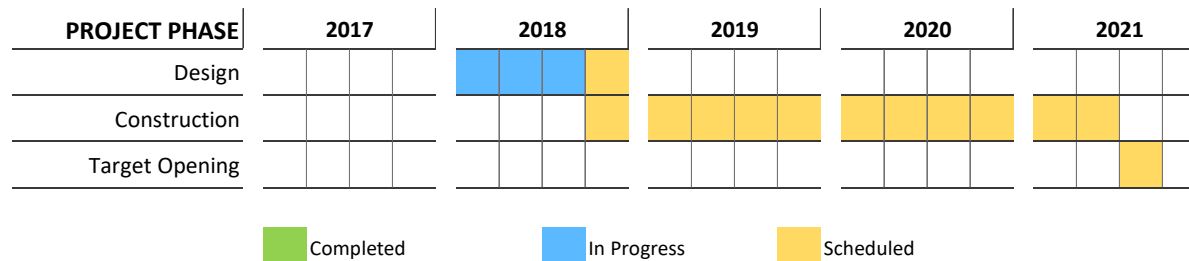
**Board Member** Debra Guerrero  
**Architect** Pfluger  
**Construction Manager** Gilbane

**Bond scope** – Renovations and upgrades include, but not limited to:

- Classroom spaces (general learning, science, special education)
- Restrooms
- Art and Music Spaces
- Cafeteria/kitchen
- Auditorium
- Heating, ventilation and air conditioning
- Plumbing and electrical
- Technology infrastructure for new and renovated spaces
- Lighting
- Fire sprinkler systems
- Special needs accessibility in entryways, restrooms, and other areas
- Front-entry modifications to improve security
- Roofing, building exterior and site improvements



**Project status:** Schematic Design phase 90% complete



Budget Description	Budget	Committed Costs	Cost to Date	Uncommitted Costs
Construction	\$22,744,561			\$22,744,561
Soft Costs	\$3,166,964	\$1,420,395	\$25,880	\$1,746,569
FFE	\$863,717			\$863,717
Technology	\$287,906			\$287,906
Contingency	\$1,727,435			\$1,727,435
<b>Project Total</b>	<b>\$28,790,583</b>	<b>\$1,420,395</b>	<b>\$25,880</b>	<b>\$27,370,188</b>





# Bond Update – Rogers MS

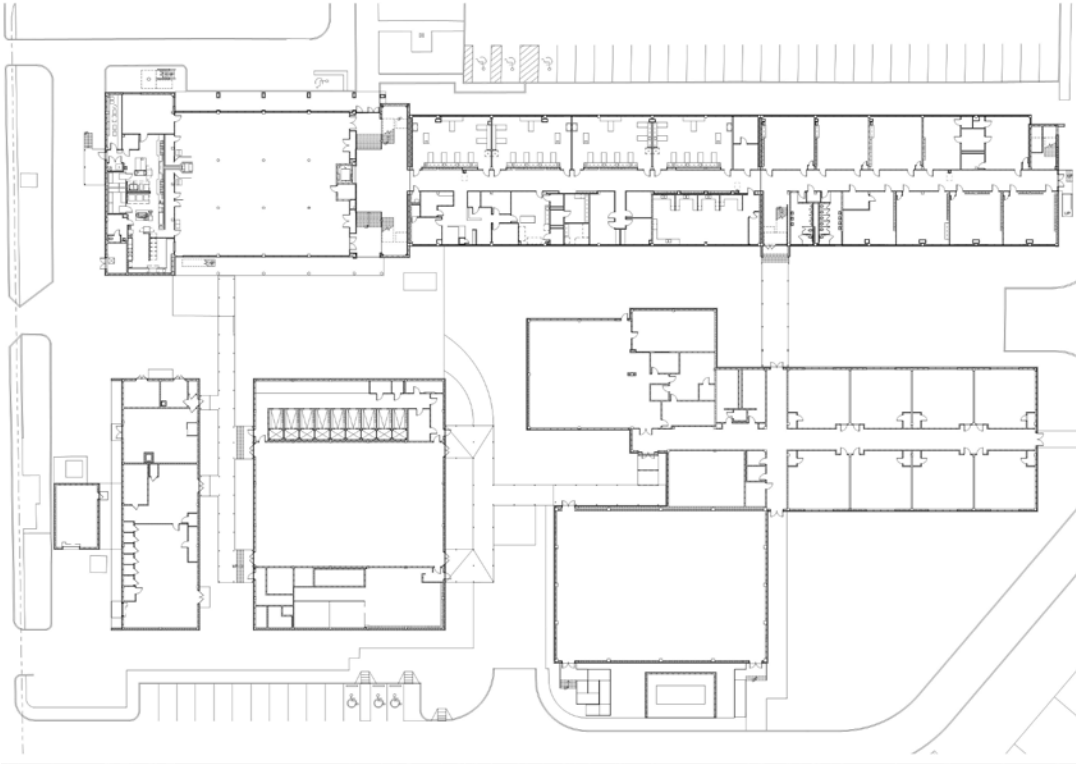


Existing First Floor Plan

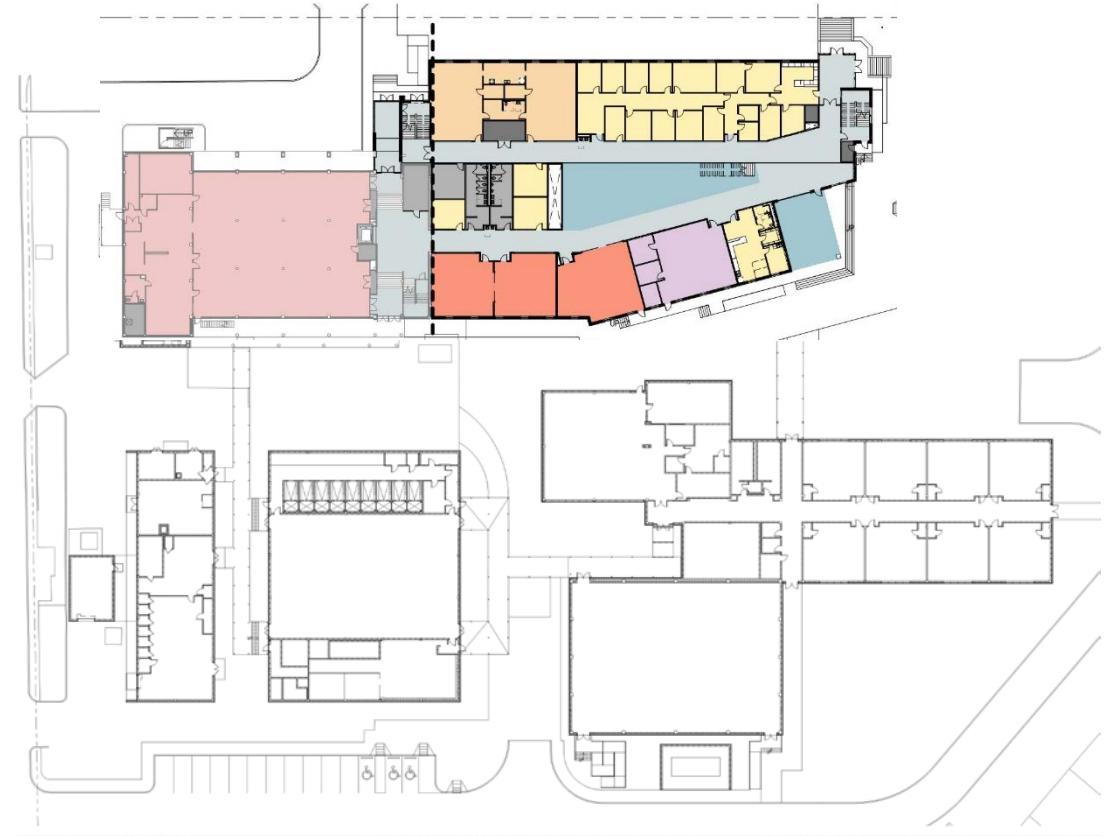


Proposed First Floor Layout

# Bond Update – Rogers MS

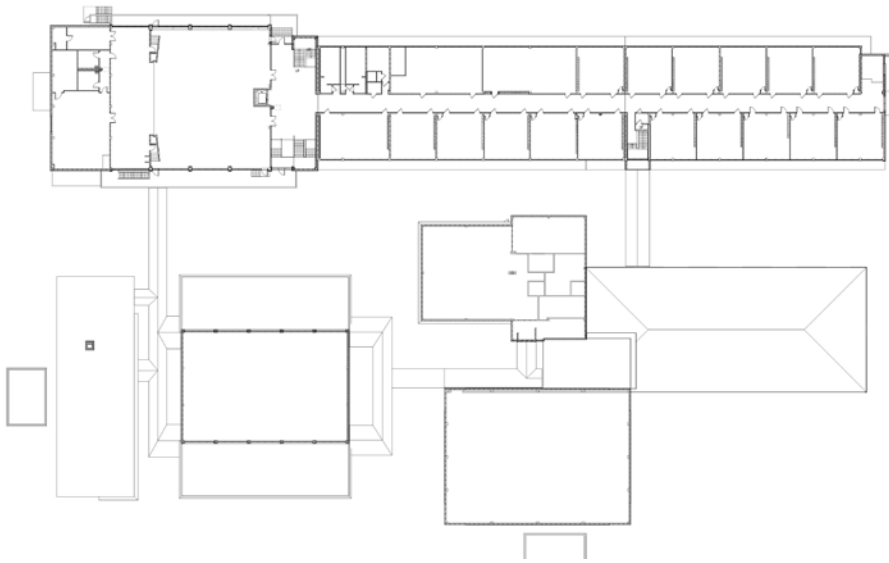


Existing First Floor Plan

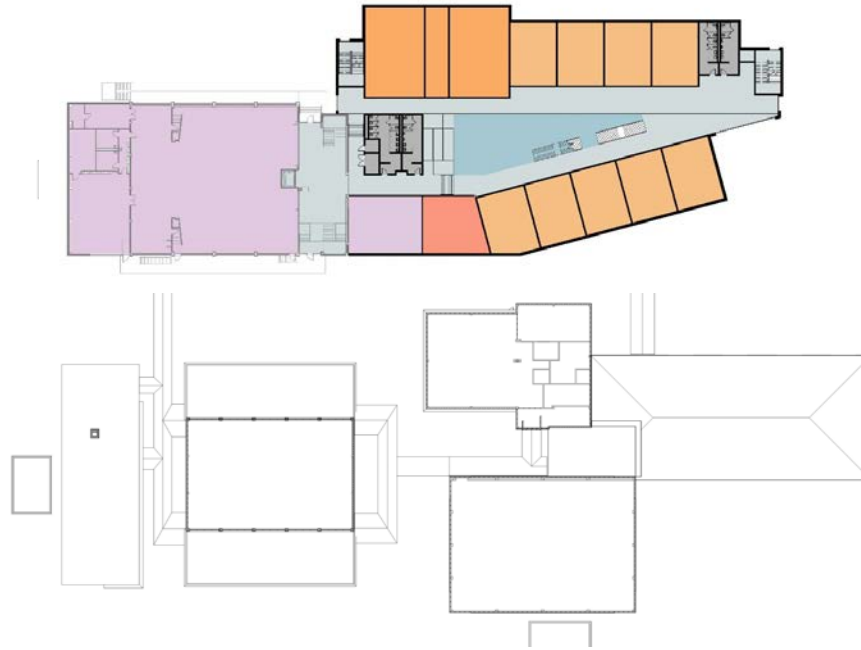


Proposed First Floor Plan

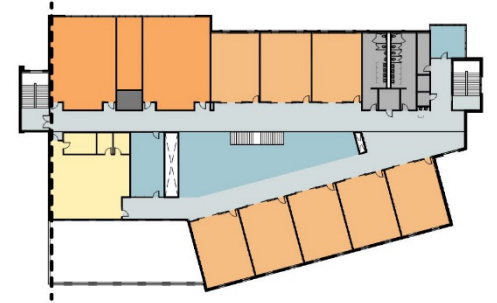
# Bond Update – Rogers MS



Existing Second Floor Plan



Proposed Second Floor Plan



Proposed Third Floor Plan

QUESTIONS?



# Bond Update – G.W. Brackenridge HS

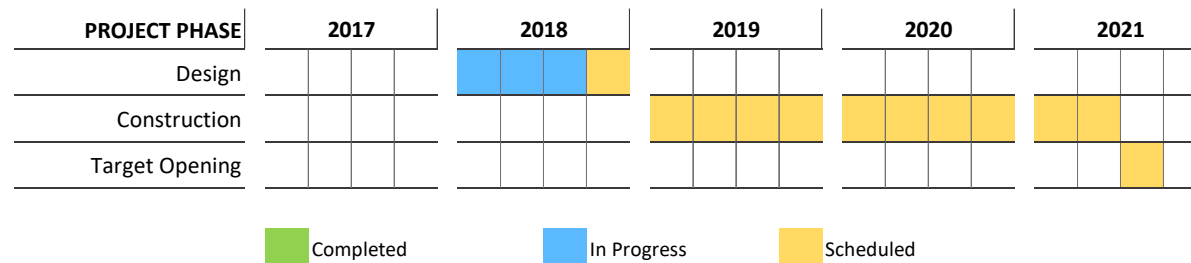
Board Member Steve Lecholop  
 Architect Stantec  
 Construction Manager Joeris

**Bond scope** – Renovations and upgrades include, but not limited to:

- Main Building
- Classroom spaces (general learning, dance/pep room, science, special education)
- Restrooms
- Cafeteria/kitchen
- Auditorium
- Heating, ventilation and air conditioning
- Plumbing and electrical
- Technology infrastructure for new and renovated spaces
- Lighting
- Fire sprinkler systems
- Special needs accessibility in entryways, restrooms, and other areas
- Front-entry modifications to improve security
- Athletic track resurfacing
- Tennis court fencing
- Roofing, building exterior and site improvements



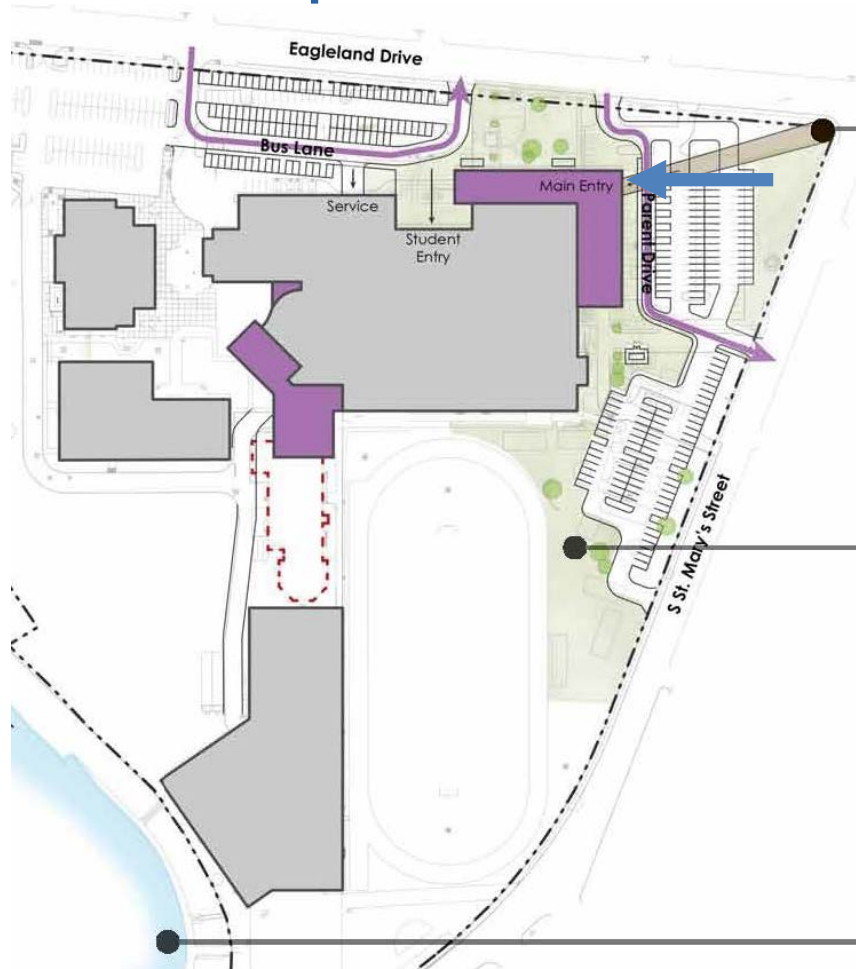
**Project status:** Schematic Design phase complete



Budget Description	Budget	Committed Costs	Cost to Date	Uncommitted Costs
Construction	\$39,786,333			\$39,786,333
Soft Costs	\$5,539,869	\$2,391,791	\$114,740	\$3,148,078
FFE	\$1,510,873			\$1,510,873
Technology	\$503,624			\$503,624
Contingency	\$3,021,747			\$3,021,747
<b>Project Total</b>	<b>\$50,362,447</b>	<b>\$2,391,791</b>	<b>\$114,740</b>	<b>\$47,970,656</b>



# Bond Update – G.W. Brackenridge HS



Proposed Site Plan



Proposed New Main Public Entrance



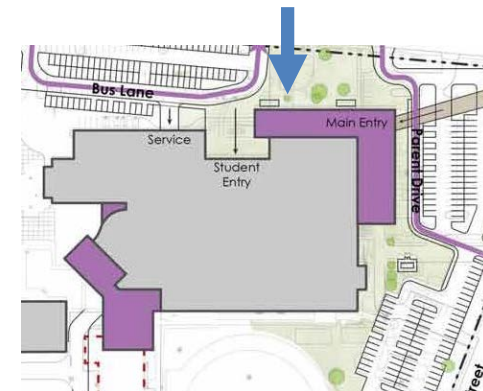
# Bond Update – G.W. Brackenridge HS



Proposed Façade – Eagleland Drive



Proposed Student Entrance – Bus drop off



# Bond Update – G.W. Brackenridge HS



## Proposed First Floor Plan



# Bond Update – G.W. Brackenridge HS



Proposed Second Floor Plan

# Bond Update – G.W. Brackenridge HS



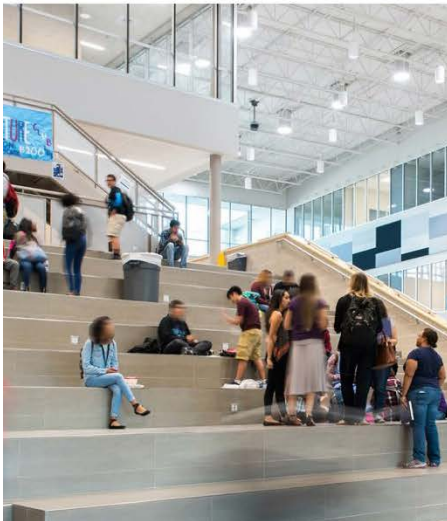
General Classroom



Extended Learning Areas



# Bond Update – G.W. Brackenridge HS



Student Dining/Large Group Instruction

# Bond Update – J.T. Brackenridge ES

**Board Member** Patti Radle  
**Architect** Chesney Morales  
**Construction Manager** Morganti Texas/ Casias JV

**Bond scope** – Renovations and upgrades include, but not limited to:

- Classroom spaces (general learning, science, art, music, special education)
- Restrooms
- Cafeteria/kitchen
- Stage
- Library
- Heating, ventilation and air conditioning
- Plumbing and electrical
- Technology infrastructure for new and renovated spaces
- Lighting
- Fire sprinkler systems
- Special needs accessibility in entryways, restrooms, and other areas
- Front-entry modifications to improve security
- Roofing building exterior and site improvements



**Project status:** Design Development phase complete

PROJECT PHASE	2017	2018	2019	2020	2021
Design		In Progress			
Construction		Scheduled	Scheduled	Scheduled	Scheduled
Target Opening					Scheduled

■ Completed     
 ■ In Progress     
 ■ Scheduled

Budget Description	Budget	Committed Costs	Cost to Date	Uncommitted Costs
Construction	\$9,453,702			\$9,453,702
Soft Costs	\$1,316,338	\$716,125	\$117,044	\$600,214
FFE	\$359,001			\$359,001
Technology	\$119,667			\$119,667
Contingency	\$718,003			\$718,003
<b>Project Total</b>	<b>\$11,966,712</b>	<b>\$716,125</b>	<b>\$117,044</b>	<b>\$11,250,587</b>





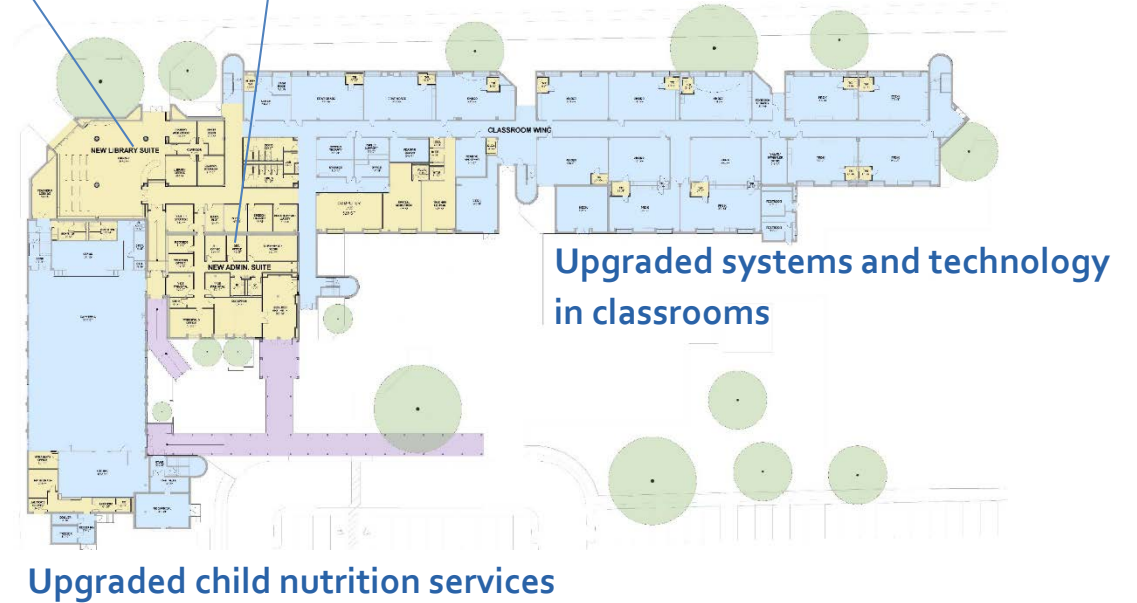
# Bond Update – J.T. Brackenridge ES



Existing First Floor Plan

New library suite

New administration suite

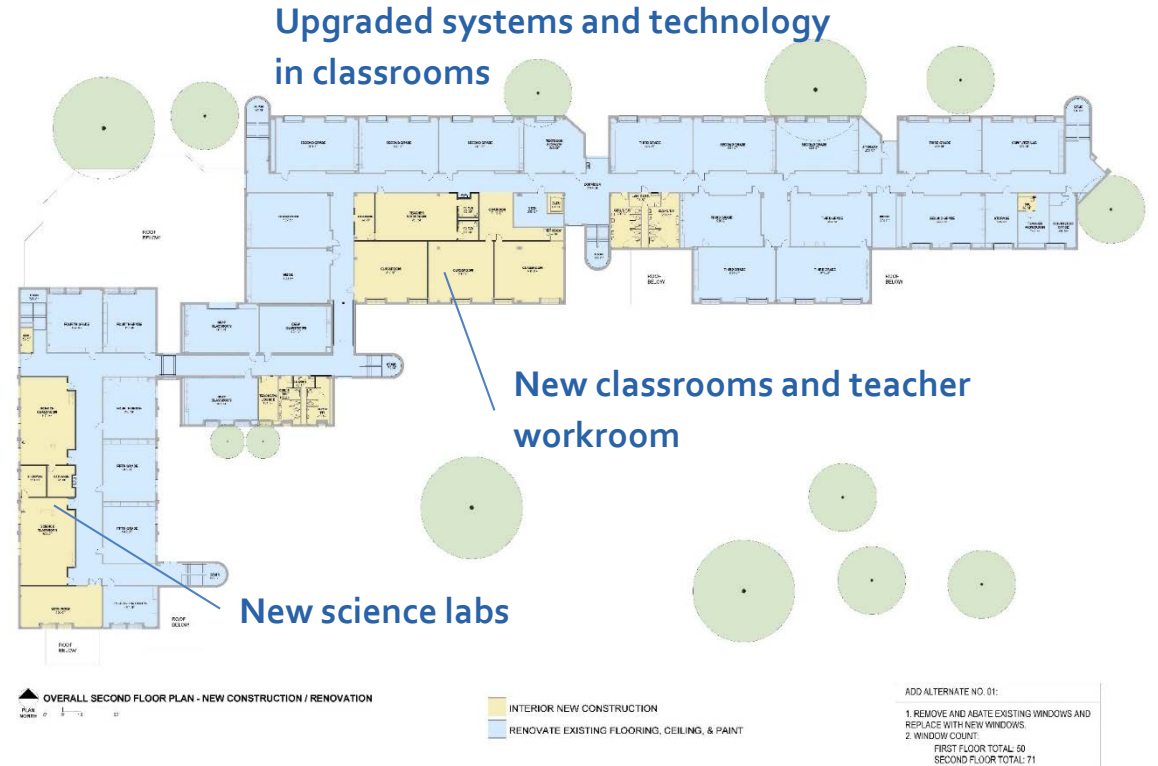


Proposed First Floor Plan

# Bond Update – J.T. Brackenridge ES



Existing Second Floor Plan



Proposed Second Floor Plan

# Bond Update – J.T. Brackenridge ES



Proposed New Entry Canopy





# Bond Update – Davis MS

Board Member

James Howard

Architect

Marmon Mok

Construction Manager

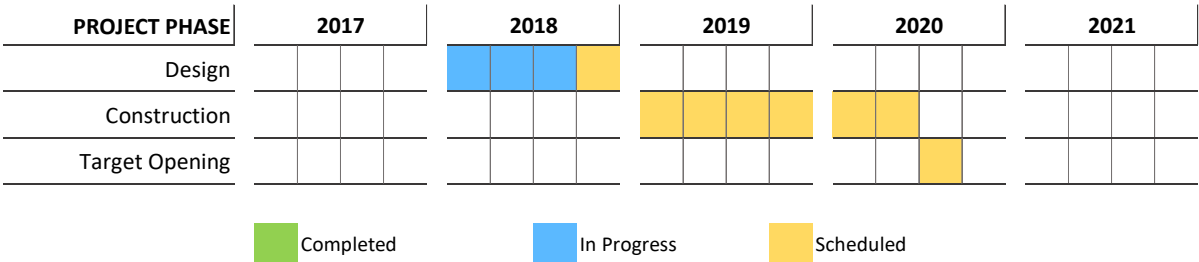
Joeris

**Bond scope** – Renovations and upgrades include, but not limited to:

- Classroom spaces (general learning, science, special education)
- Restrooms
- Art and Music Spaces
- Cafeteria/kitchen
- Auditorium
- Heating, ventilation and air conditioning
- Plumbing and electrical
- Technology infrastructure for classrooms, labs and other instructional spaces
- Lighting
- Fire sprinkler systems
- Special needs accessibility in entryways, restrooms, and other areas
- Front entry modifications to improve security
- Roofing, building exterior and site improvements



**Project status:** Schematic Design phase complete



Budget Description	Budget	Committed Costs	Cost to Date	Uncommitted Costs
Construction	\$16,026,323			\$16,026,323
Soft Costs	\$2,231,513	\$1,080,949	\$51,271	\$1,150,564
FFE	\$608,595			\$608,595
Technology	\$202,865			\$202,865
Contingency	\$1,217,189			\$1,217,189
Project Total	\$20,286,485	\$1,080,949	\$51,271	\$19,205,536





# Bond Update – Davis MS



Existing Main Entrance



Proposed Main Entrance

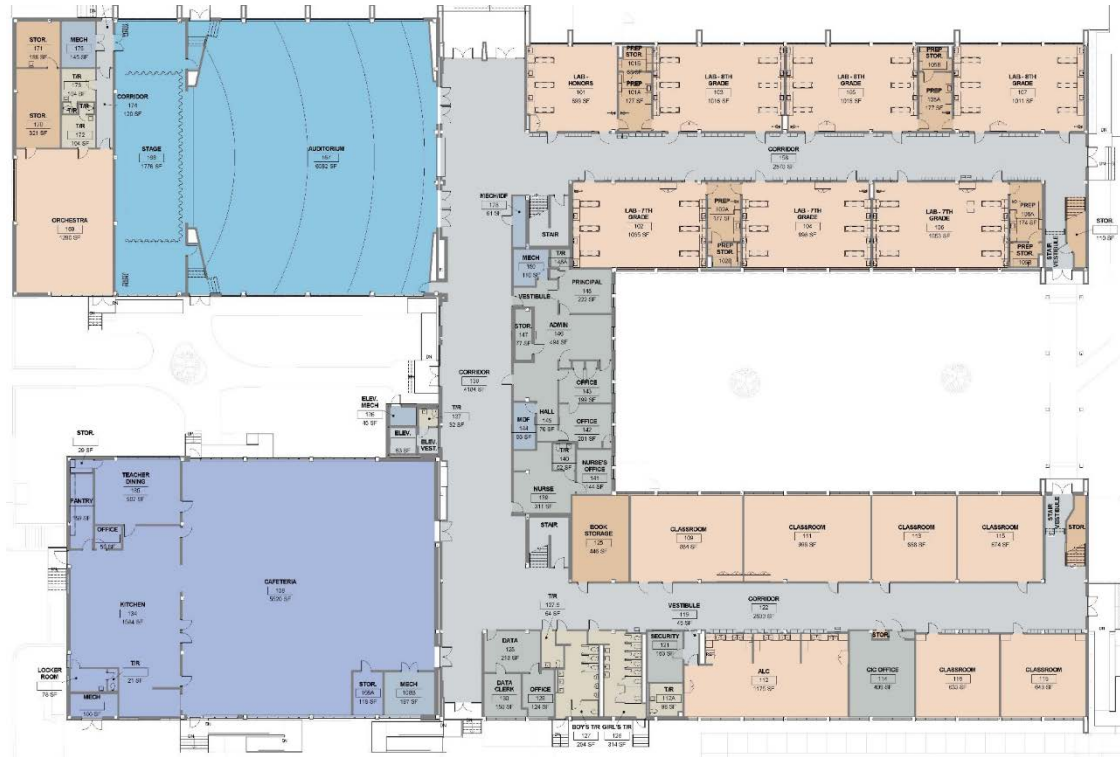
# Bond Update – Davis MS



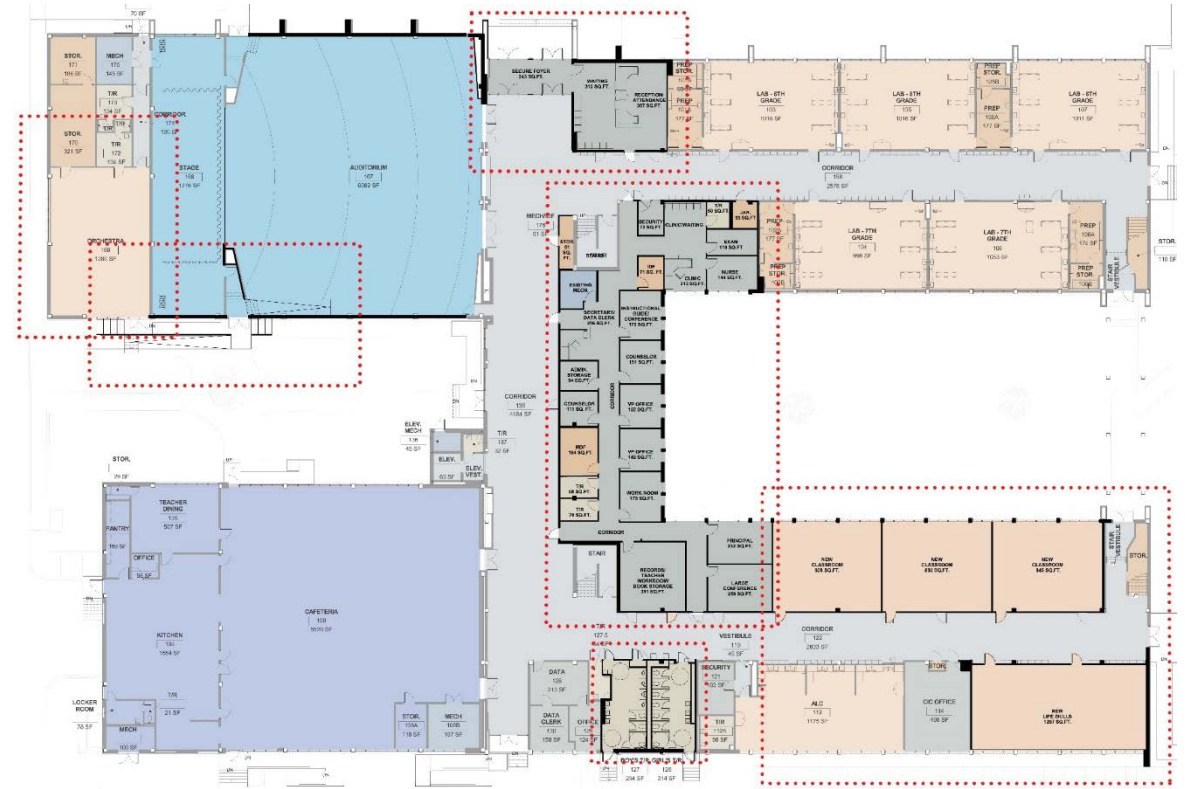
Proposed Front Facade



# Bond Update – Davis MS



Existing First Floor Plan



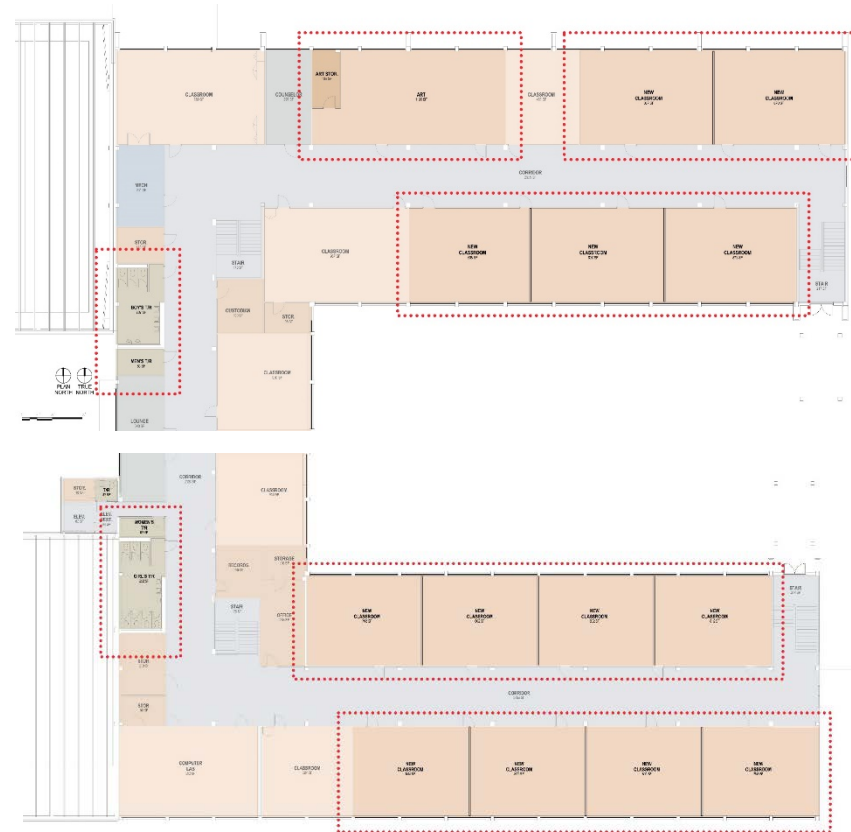
Proposed First Floor Layout



# Bond Update – Davis MS



## Existing Second Floor Plan



## Proposed Second Floor Layout

# Bond Update – Edison HS

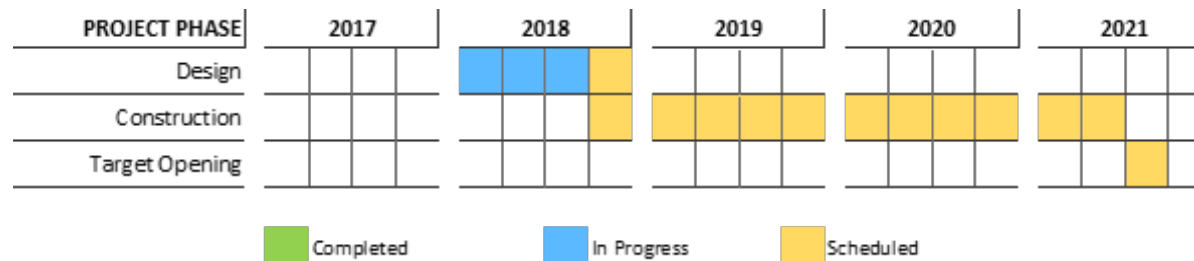
Board Member Christina Martinez  
 Architect PBK  
 Construction Manager Bartlett Cocke

Bond scope – Renovations and upgrades include, but not limited to:

- Field House Replacement
- Athletic facilities and support areas
- Auditorium
- Heating, ventilation and air conditioning
- Plumbing and electrical
- Technology infrastructure for new and renovated spaces
- Lighting
- Roof replacement
- Fire sprinkler systems
- Special needs accessibility in entryways, restrooms, and other areas
- Front-entry modifications to improve security
- Athletic track re-coating
- Tennis court fencing
- Roofing, building exterior and site improvements



Project status: Schematic Design phase complete



Budget Description	Budget	Committed Costs	Cost to Date	Uncommitted Costs
Construction	\$17,332,203			\$17,332,203
Soft Costs	\$2,413,345	\$1,103,299	\$52,243	\$1,310,046
FFE	\$658,185			\$658,185
Technology	\$219,395			\$219,395
Contingency	\$1,316,370			\$1,316,370
Project Total	\$21,939,497	\$1,103,299	\$52,243	\$20,836,198



# Bond Update – Edison HS



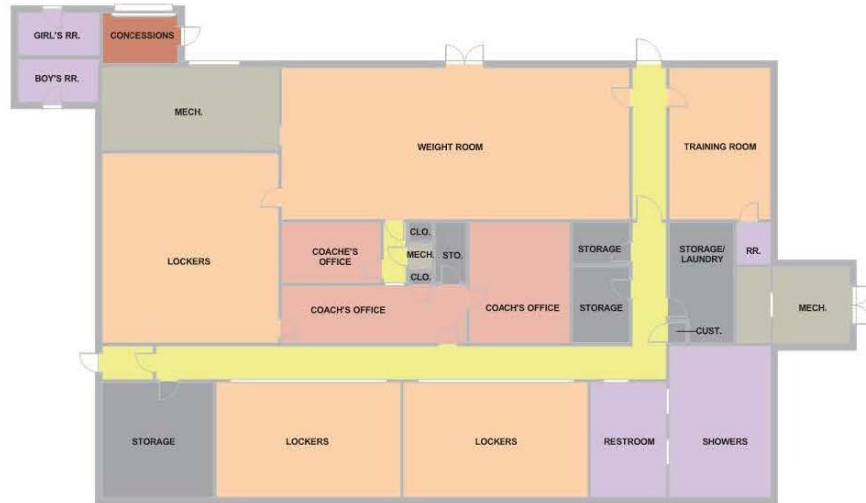
Existing Scope



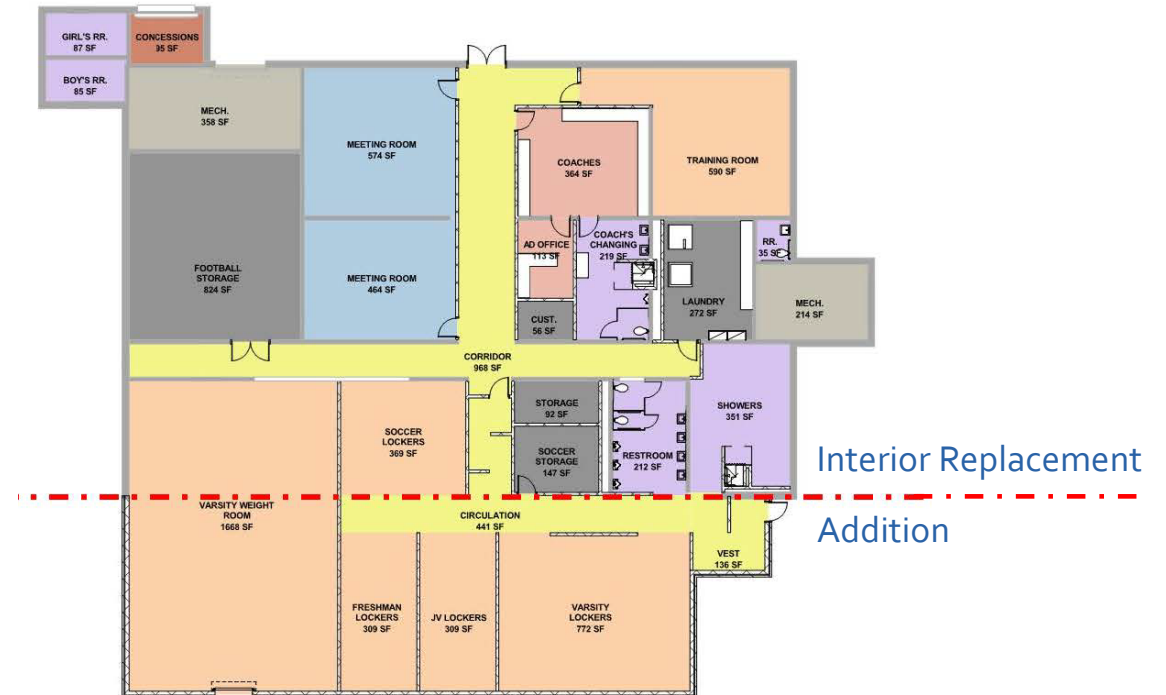
Proposed Scope



# Bond Update – Edison HS

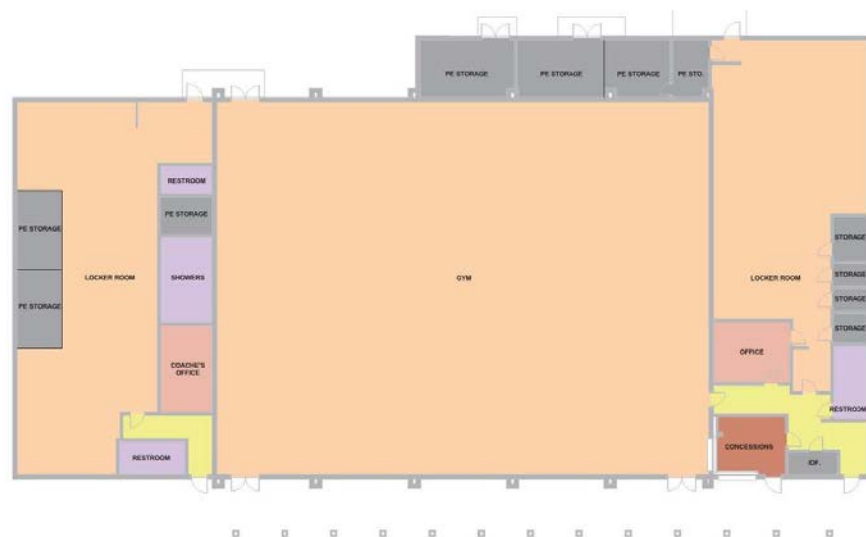


## Existing Fieldhouse

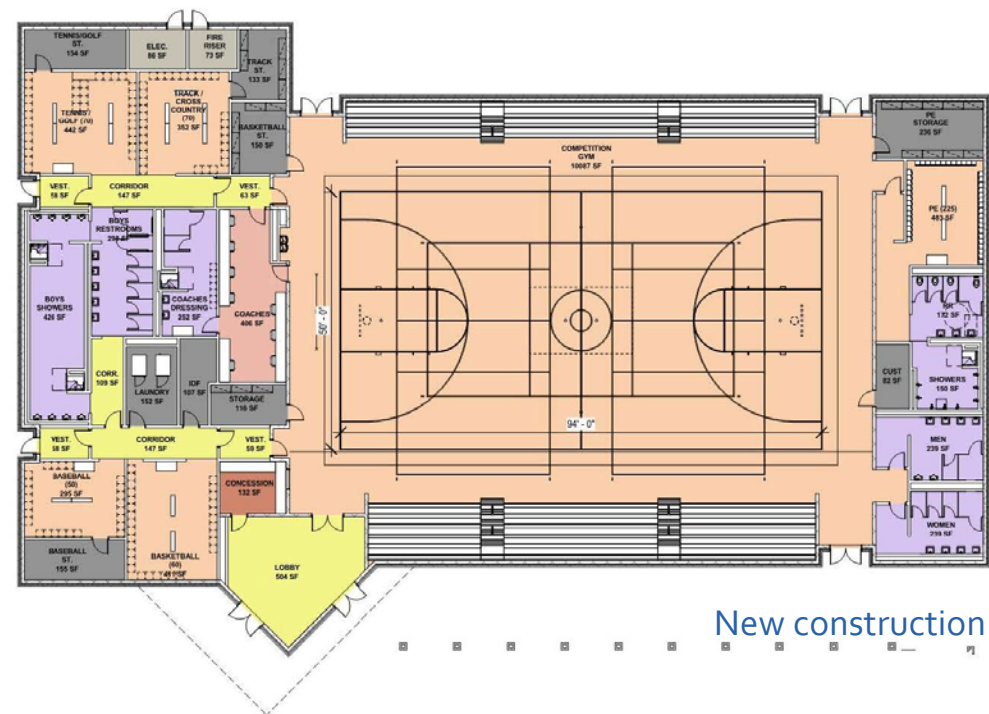


## Proposed Fieldhouse

# Bond Update – Edison HS



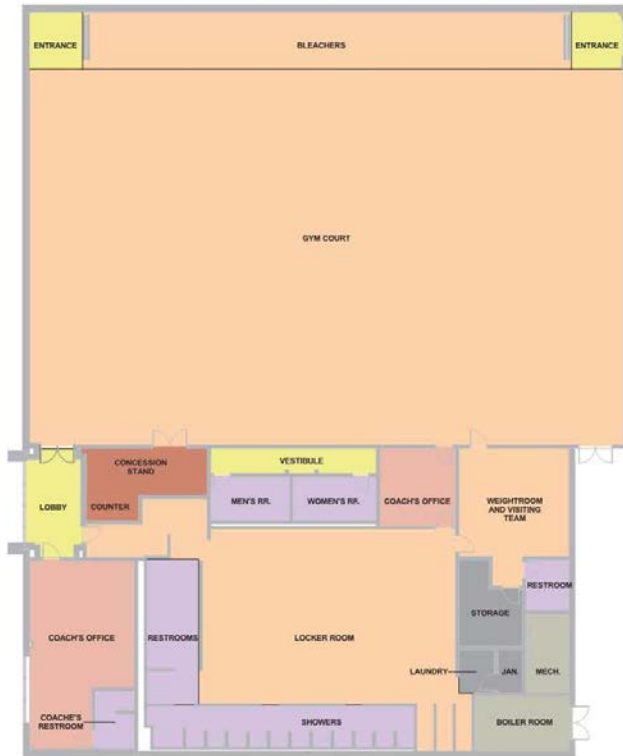
Existing Primary Gym



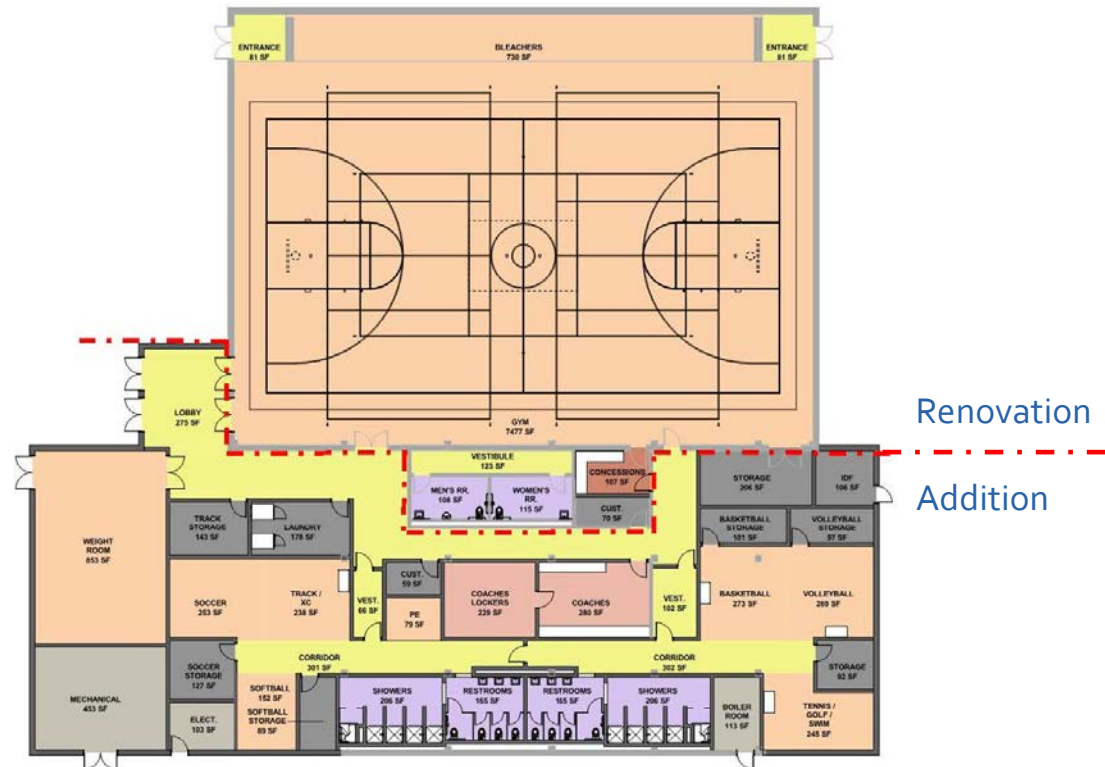
Proposed Primary Gym

New construction

# Bond Update – Edison HS



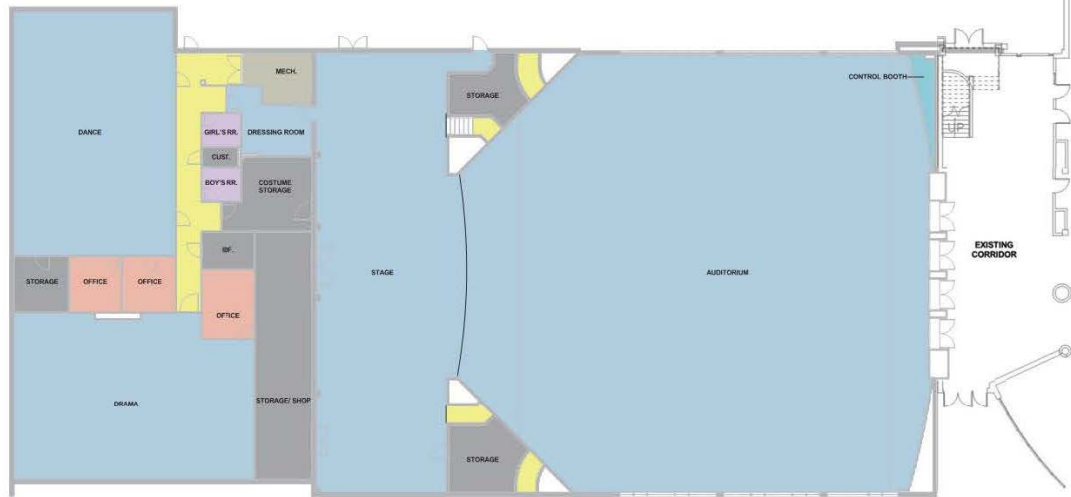
Existing Secondary Gym



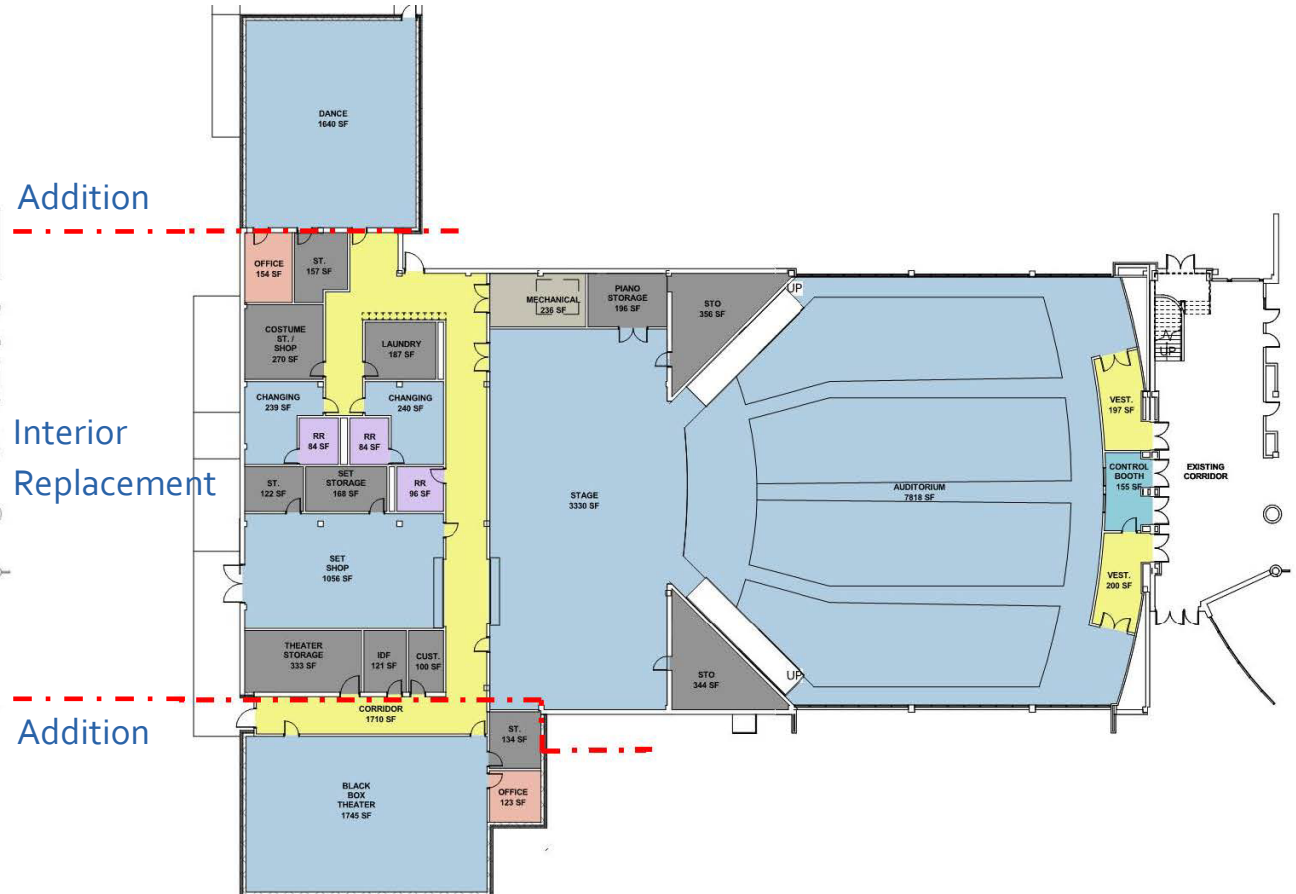
Proposed Secondary Gym



# Bond Update – Edison HS



## Existing Fine Arts



## Proposed Fine Arts

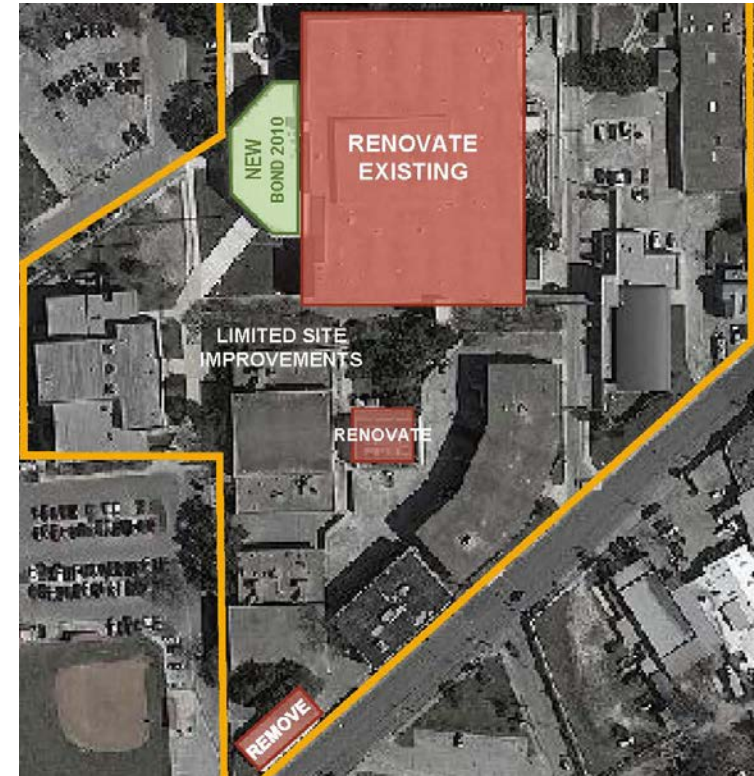
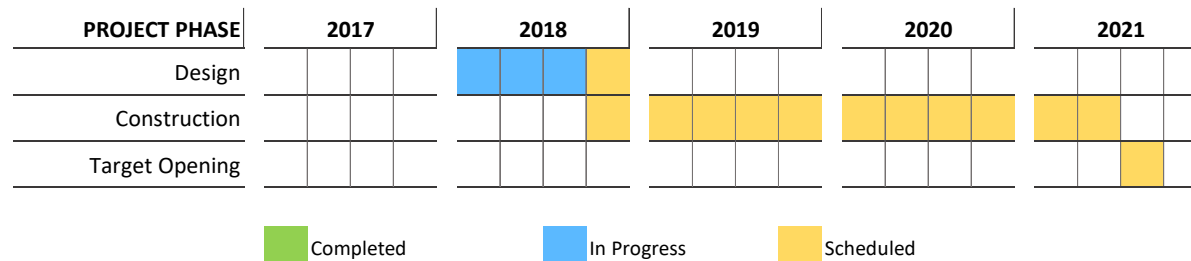
# Bond Update – Fox Tech HS

Board Member Steve Lecholop  
 Architect Munoz  
 Construction Manager Bartlett Cocke

**Bond scope** – Renovations and upgrades include, but not limited to:

- Classroom spaces (general learning, science, fine arts, music, special education)
- Restrooms
- Cafeteria/kitchen
- Auditorium
- Heating, ventilation and air conditioning
- Plumbing and electrical
- Technology infrastructure for new and renovated spaces
- Lighting
- Fire sprinkler systems
- Special needs accessibility in entryways, restrooms, and other areas
- Relocate secondary gym
- Front-entry modifications to improve security
- Roofing, building exterior and site improvements

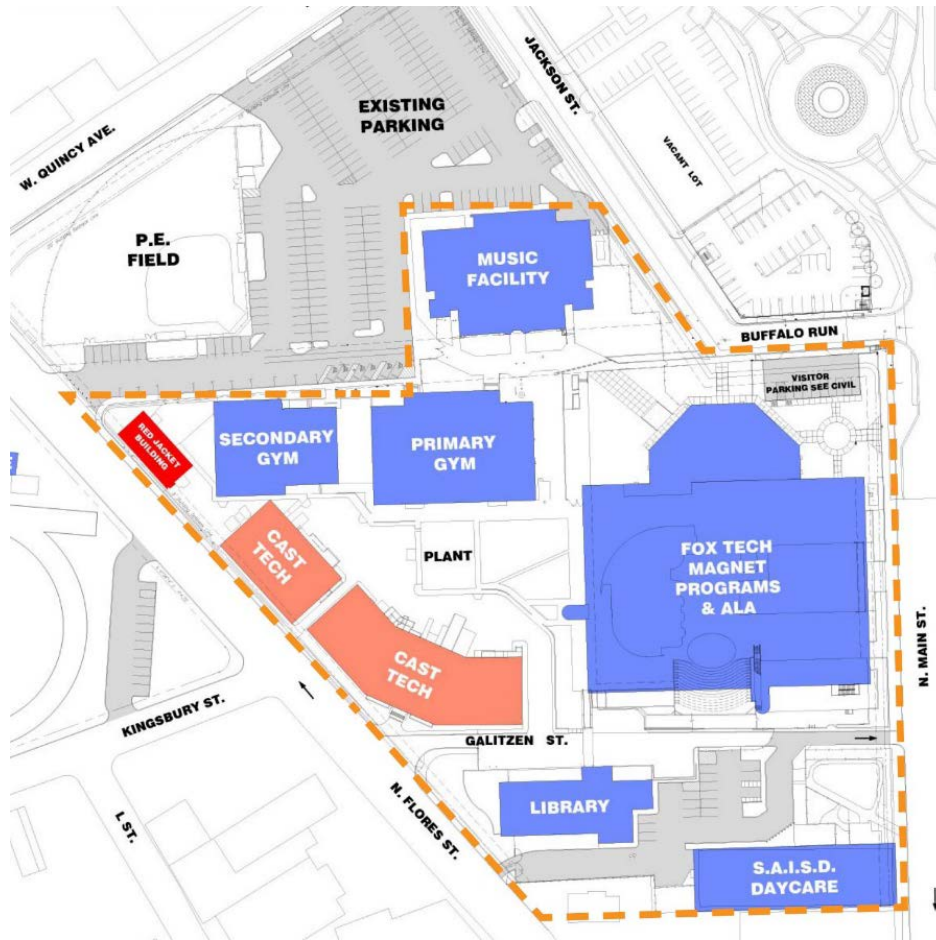
**Project status:** Schematic Design phase 80% complete



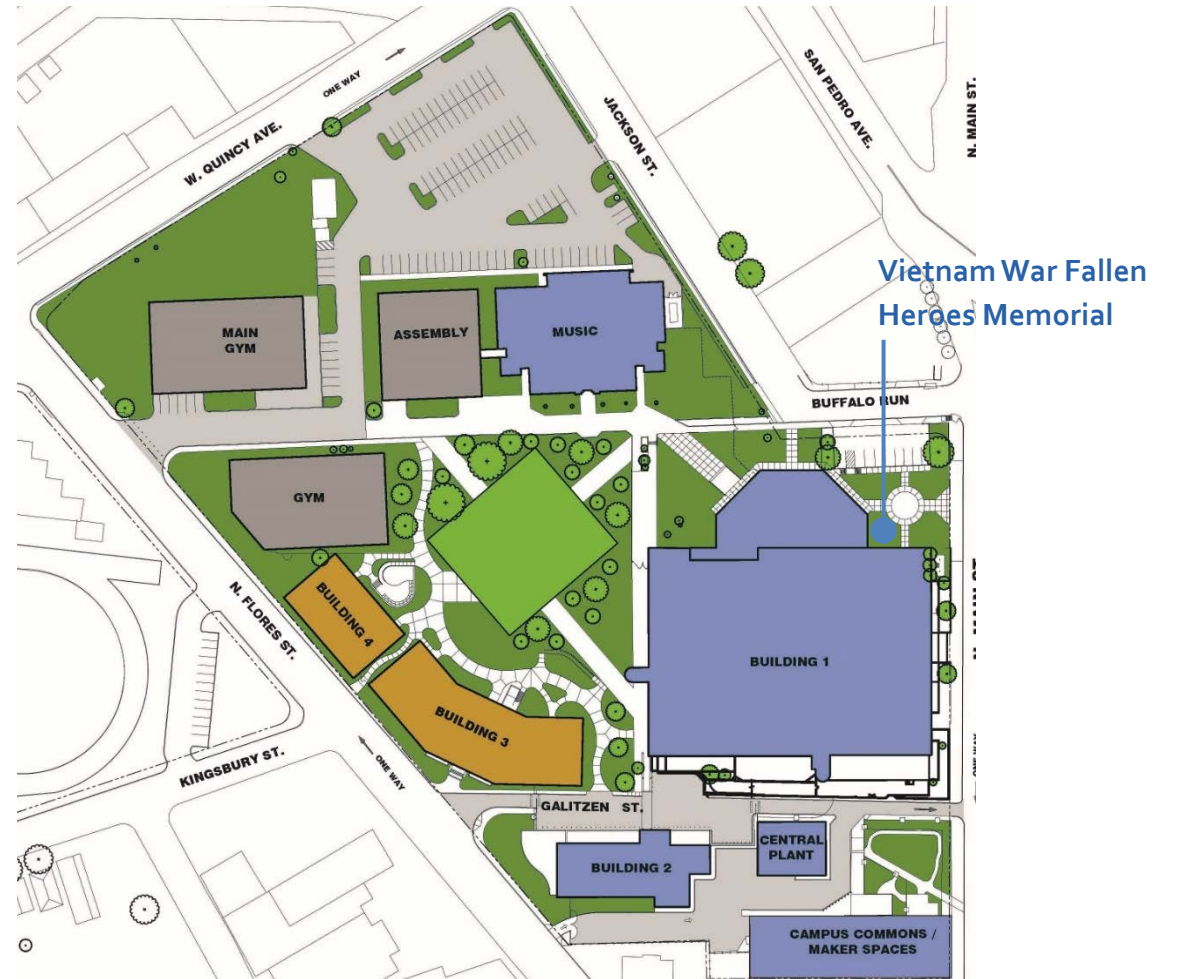
Budget Description	Budget	Committed Costs	Cost to Date	Uncommitted Costs
Construction	\$20,749,255			\$20,749,255
Soft Costs	\$2,889,137	\$1,307,916	\$63,426	\$1,581,221
FFE	\$787,946			\$787,946
Technology	\$262,649			\$262,649
Contingency	\$1,575,893			\$1,575,893
Project Total	\$26,264,880	\$1,307,916	\$63,426	\$24,956,964



# Bond Update – Fox Tech HS



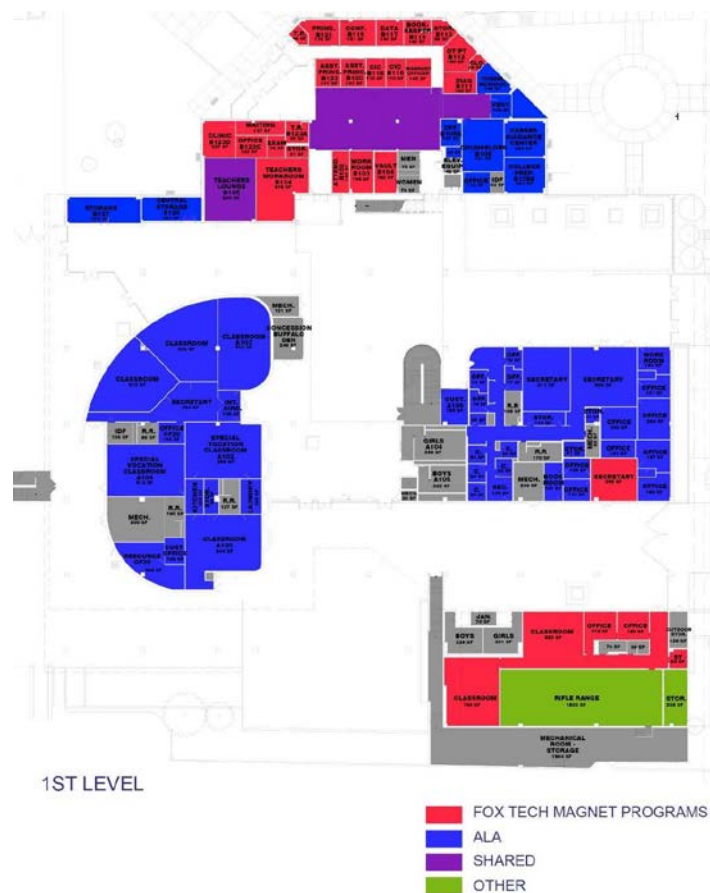
Existing Site Plan



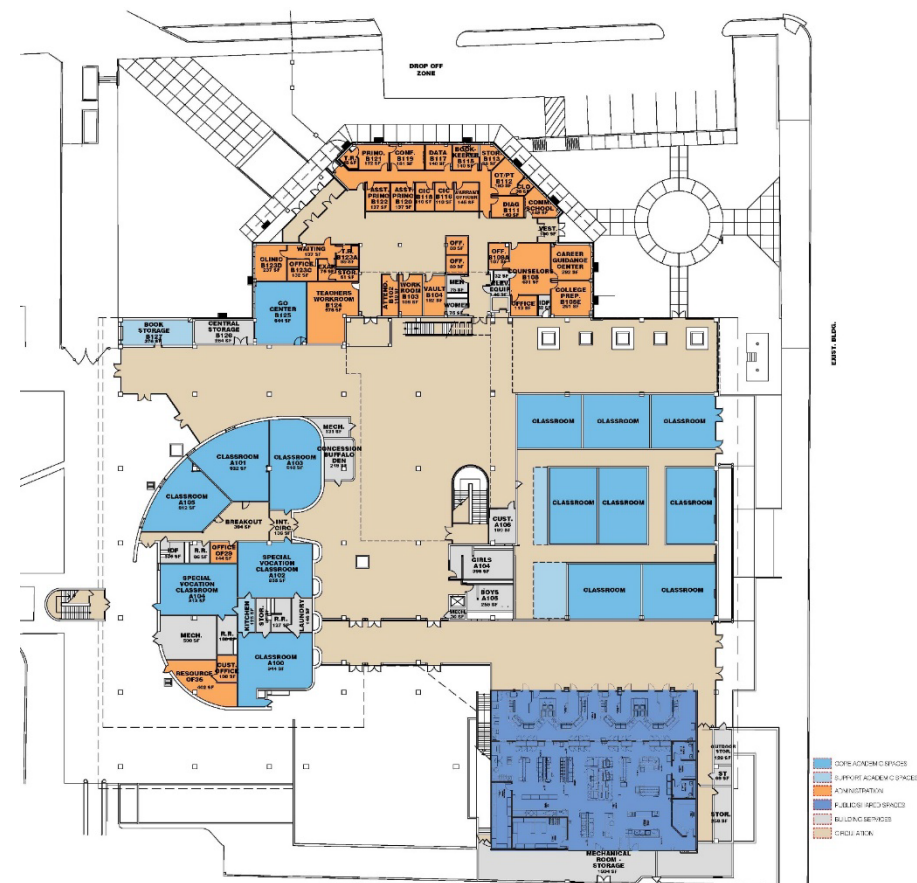
Proposed Site Plan (Master Plan)



# Bond Update – Fox Tech HS



Existing First Floor Plan



Proposed First Floor Plan

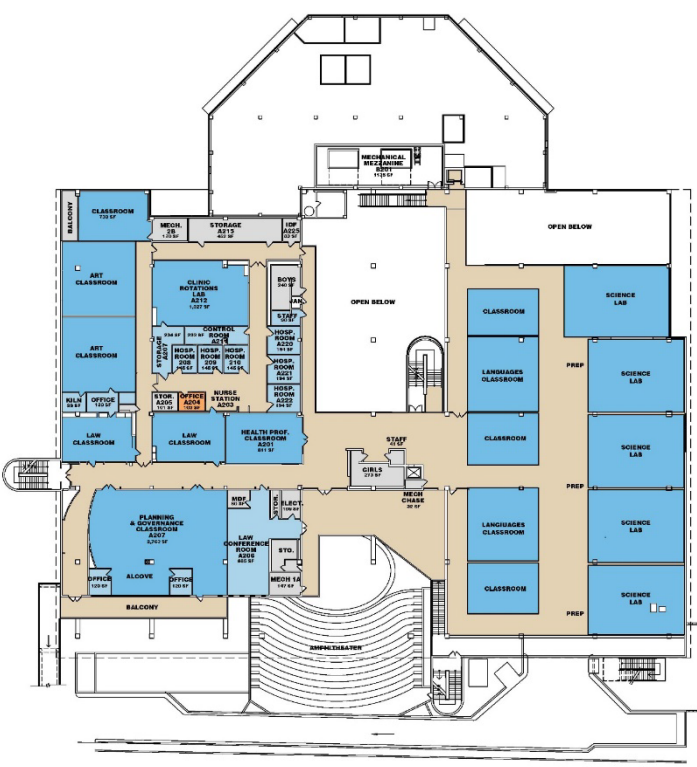
# Bond Update – Fox Tech HS



2ND LEVEL

- FOX TECH MAGNET PROGRAM
- ALA
- SHARED

Existing Second Floor Plan

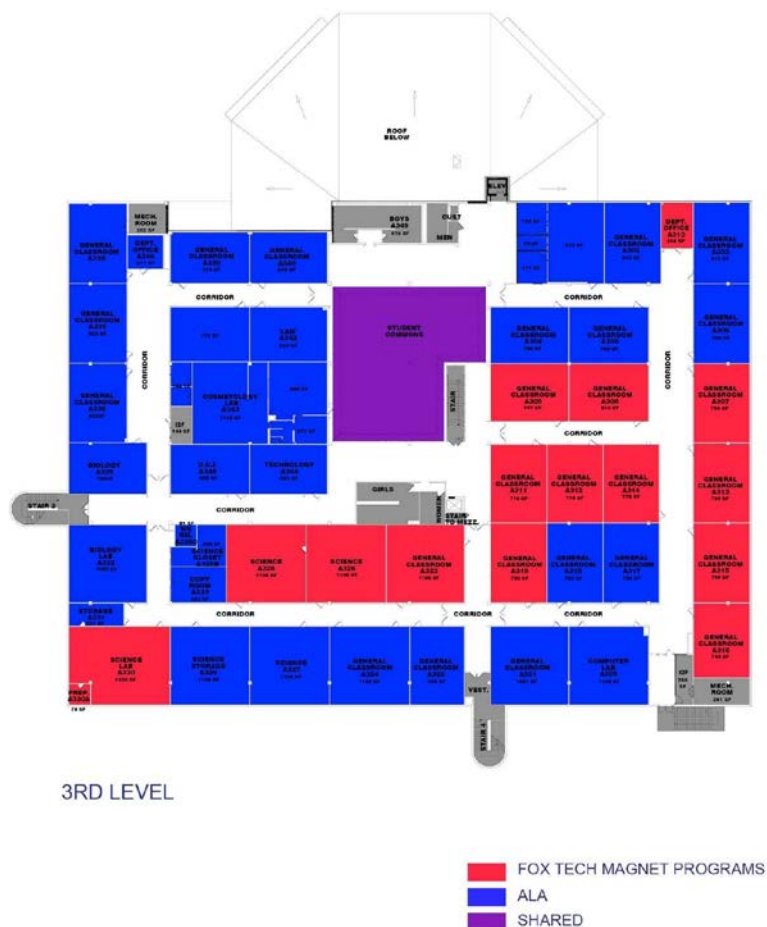


- CORE ACADEMIC SPACES
- SUPPORT ACADEMIC SPACES
- ADMINISTRATION
- PUBLIC OPENINGS
- CIRCULATION

Proposed Second Floor Plan



# Bond Update – Fox Tech HS



Existing Third Floor Plan



Proposed Third Floor Plan

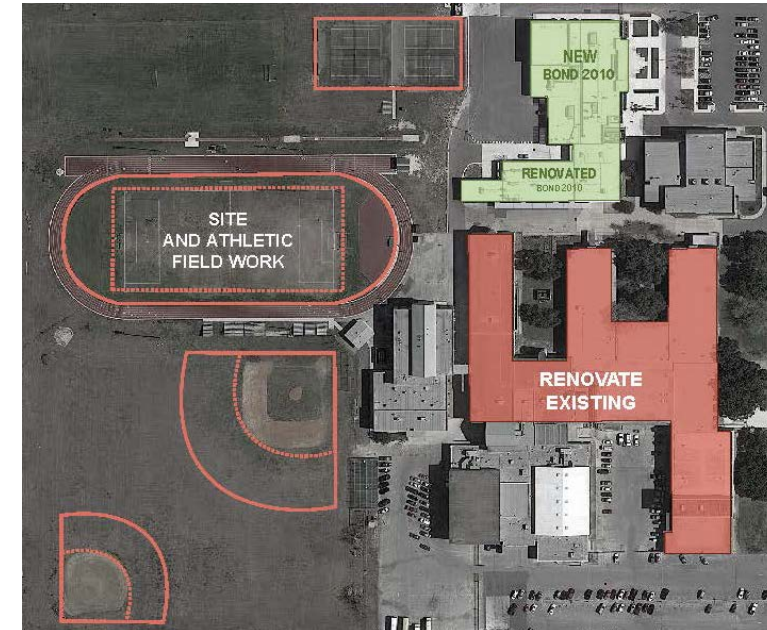


# Bond Update – Houston HS

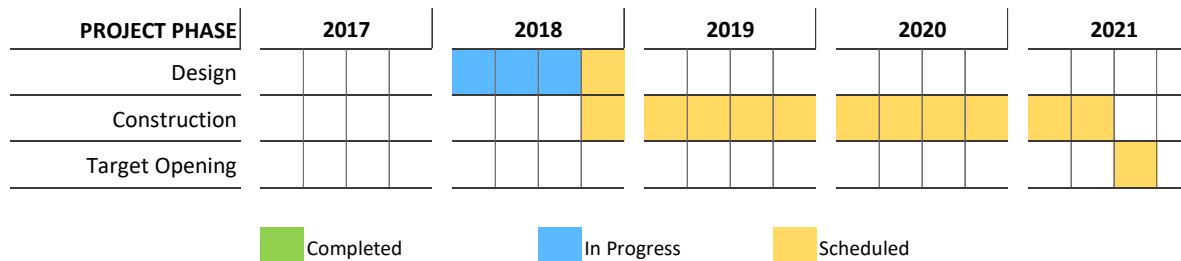
**Board Member** James Howard  
**Architect** KAI Texas  
**Construction Manager** Joeris

**Bond scope** – Renovations and upgrades include, but not limited to:

- Classroom spaces (general learning, science, special education)
- Restrooms
- Cafeteria/kitchen
- Auditorium
- Heating, ventilation and air conditioning
- Plumbing and electrical
- Technology infrastructure for new and renovated spaces
- Lighting
- Fire sprinkler systems
- Special needs accessibility in entryways, restrooms, and other areas
- Front-entry modifications to improve security
- Athletic track re-coating
- Tennis court fencing
- Roofing, building exterior and site improvements



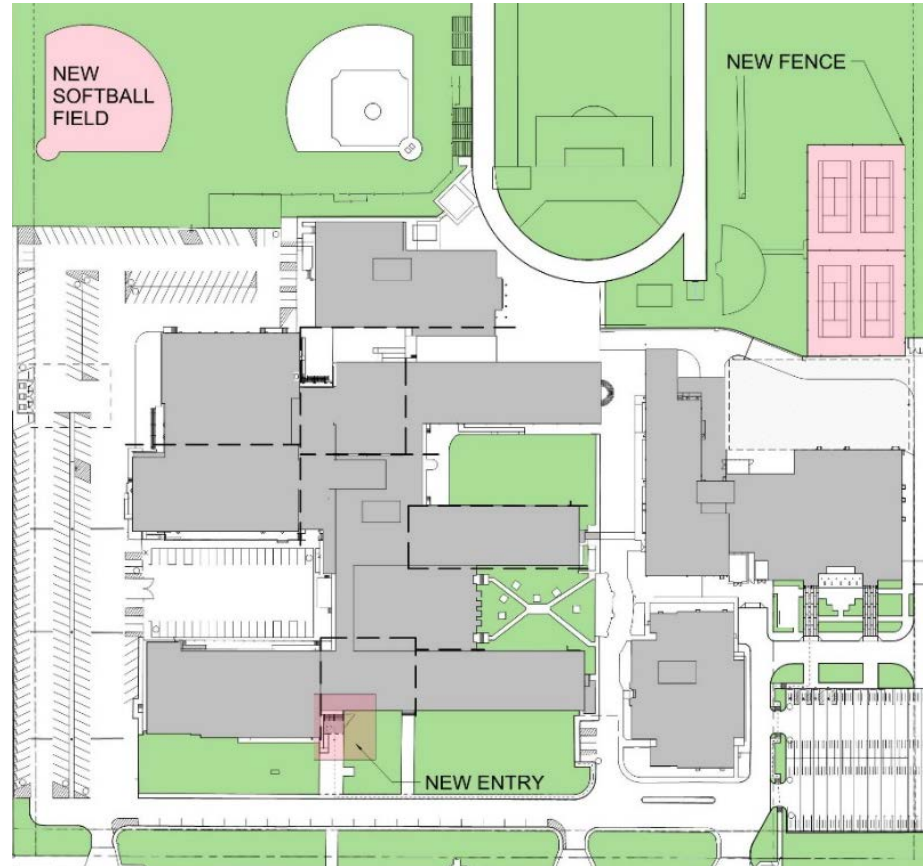
**Project status:** Design Development phase complete



Budget Description	Budget	Committed Costs	Cost to Date	Uncommitted Costs
Construction	\$26,220,219			\$26,220,219
Soft Costs	\$3,650,917	\$1,588,482	\$75,616	\$2,062,435
FFE	\$995,705			\$995,705
Technology	\$331,902			\$331,902
Contingency	\$1,991,409			\$1,991,409
Project Total	\$33,190,150	\$1,588,482	\$75,616	\$31,601,668

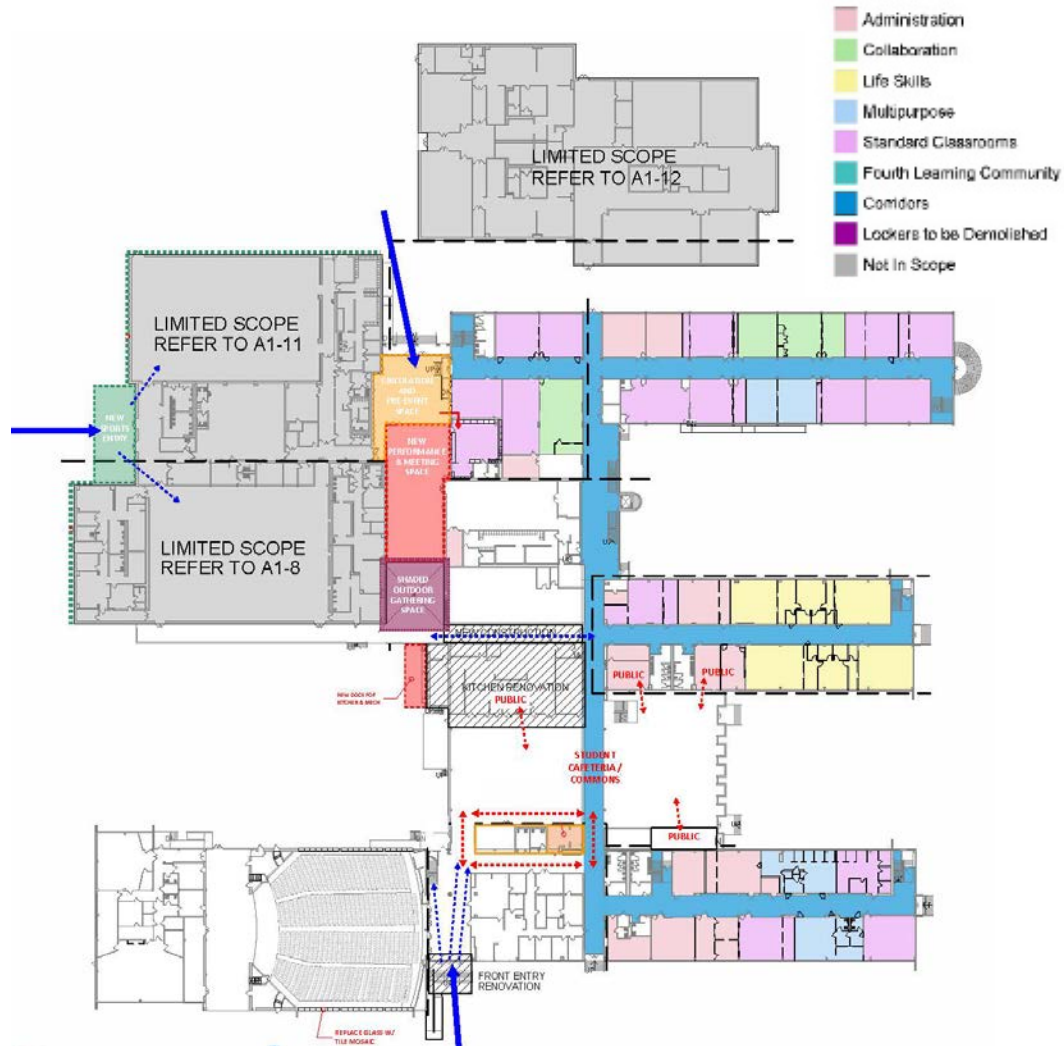


# Bond Update – Houston HS



Proposed Site Plan

# Bond Update – Houston HS



Proposed First Floor Plan



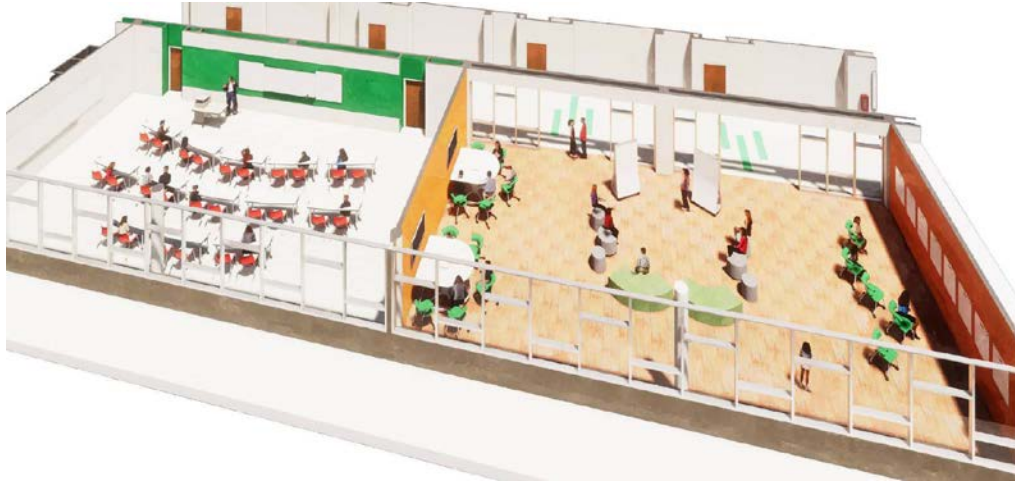
Proposed New Main Entry



Proposed New Gym Entry



# Bond Update – Houston HS



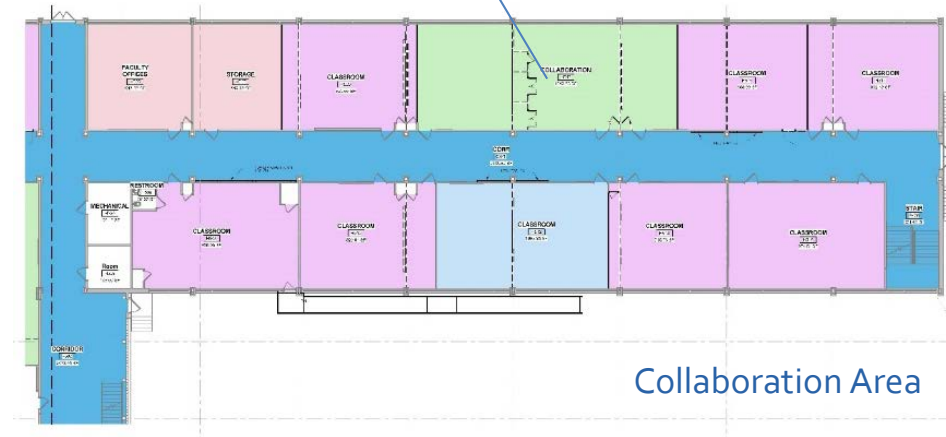
Proposed Classroom & Collaboration Area



Proposed Collaboration Area

- Administration
- Collaboration
- Life Skills
- Multipurpose
- Standard Classrooms
- Fourth Learning Community
- Corridors
- Lockers to be Demolished
- Not In Scope

Collaboration Area



Collaboration Area

Proposed First Floor Plan – Area H

# Bond Update – Irving Academy

Board Member  
Architect  
Construction Manager

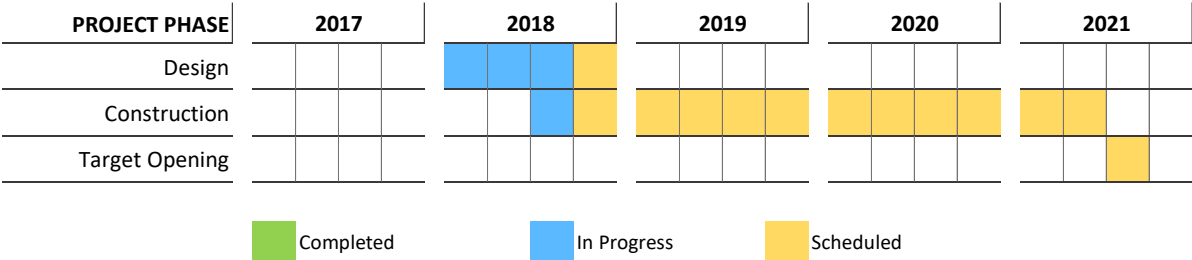
Patti Radle  
O’Connell Robertson  
Bartlett Cocke

**Bond scope** – Renovations and upgrades include, but not limited to:

- Classroom spaces (general learning, science, art, music, special education)
- Restrooms
- Cafeteria/kitchen
- Auditorium
- Library
- Heating, ventilation and air conditioning
- Plumbing and electrical
- Technology infrastructure for new and renovated spaces
- Lighting
- Fire sprinkler systems
- Special needs accessibility in entryways, restrooms, and other areas
- Front-entry modifications to improve security
- Roofing, building exterior and site improvements



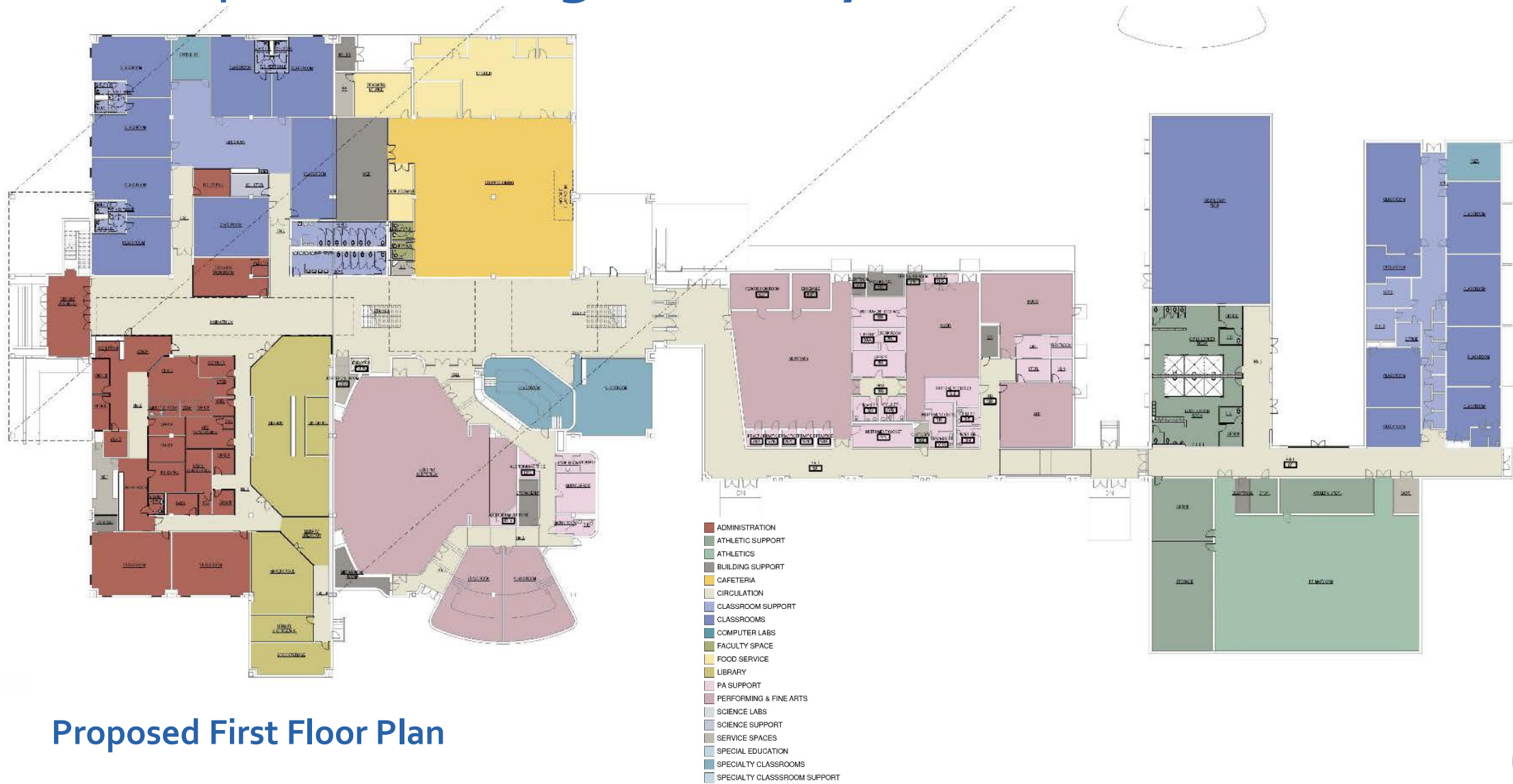
**Project status:** Schematic Design phase 90% complete



Budget Description	Budget	Committed Costs	Cost to Date	Uncommitted Costs
Construction	\$18,460,056	\$192,000		\$18,268,056
Soft Costs	\$2,570,388	\$1,227,006	\$153,061	\$1,343,382
FFE	\$701,015			\$701,015
Technology	\$233,672			\$233,672
Contingency	\$1,402,030			\$1,402,030
Project Total	\$23,367,160	\$1,419,006	\$153,061	\$21,948,154



# Bond Update – Irving Academy



Proposed First Floor Plan





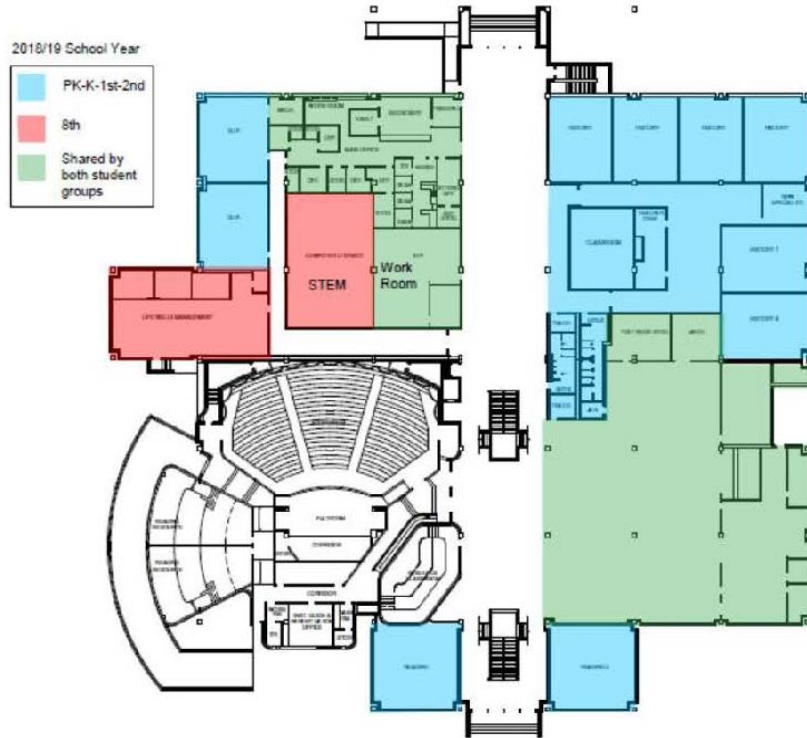
# Bond Update – Irving Academy



Proposed Second Floor Plan



# Bond Update – Irving Academy



Grade Level	Classrooms
Pre-K <sub>3</sub>	2
Pre-K <sub>4</sub>	2
First Grade	2
Second Grade	2

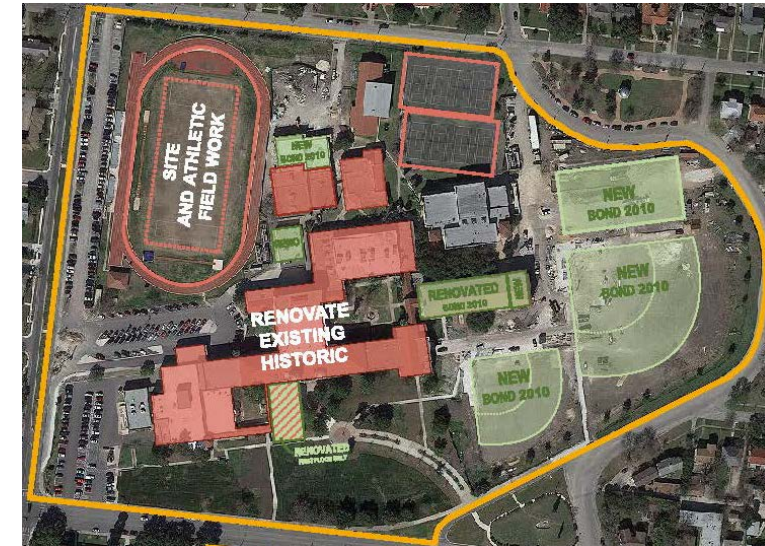
## Summer 2018 Scope of Work

# Bond Update – Jefferson HS

**Board Member** Ed Garza  
**Architect** Perkins + Will  
**Construction Manager** Bartlett Cocke

**Bond scope** – Renovations and upgrades include, but not limited to:

- Classroom spaces (general learning, science, special education)
- Restrooms
- Cafeteria/kitchen
- Black box theater
- Gymnasiums, athletic field house and support spaces
- Restore auditorium and library
- Foundation repairs
- Heating, ventilation and air conditioning
- Plumbing and electrical
- Lighting
- Fire sprinkler systems
- Special needs accessibility in entryways, restrooms, and other areas
- Front-entry modifications to improve security
- Technology infrastructure for new and renovated spaces
- Athletic track re-coating
- Tennis court fencing
- Roofing, building exterior and site improvements



**Project status:** Schematic Design phase 80% complete

PROJECT PHASE	2017	2018	2019	2020	2021
Design		<div><div></div><div></div><div></div><div></div></div>			
Construction		<div><div></div><div></div><div></div><div></div></div>	<div><div></div><div></div><div></div><div></div></div>	<div><div></div><div></div><div></div><div></div></div>	<div><div></div><div></div><div></div></div>
Target Opening					<div><div></div></div>

Completed

In Progress

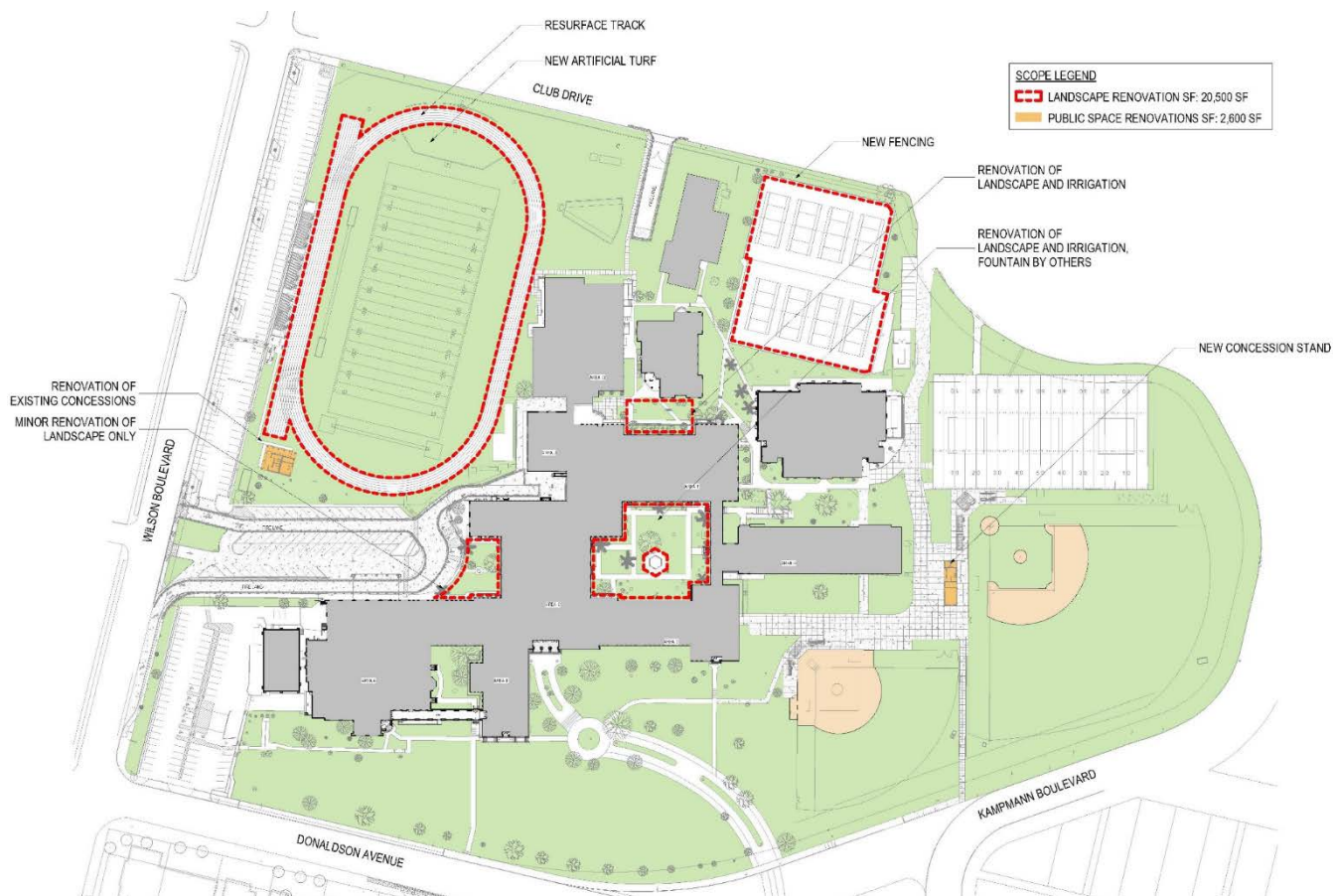
Scheduled

Budget Description	Budget	Committed Costs	Cost to Date	Uncommitted Costs
Construction	\$47,254,833			\$47,254,833
Soft Costs	\$6,579,787	\$2,833,290		\$3,746,497
FFE	\$1,794,487			\$1,794,487
Technology	\$598,162			\$598,162
Contingency	\$3,588,975			\$3,588,975
<b>Project Total</b>	<b>\$59,816,244</b>	<b>\$2,833,290</b>		<b>\$56,982,954</b>

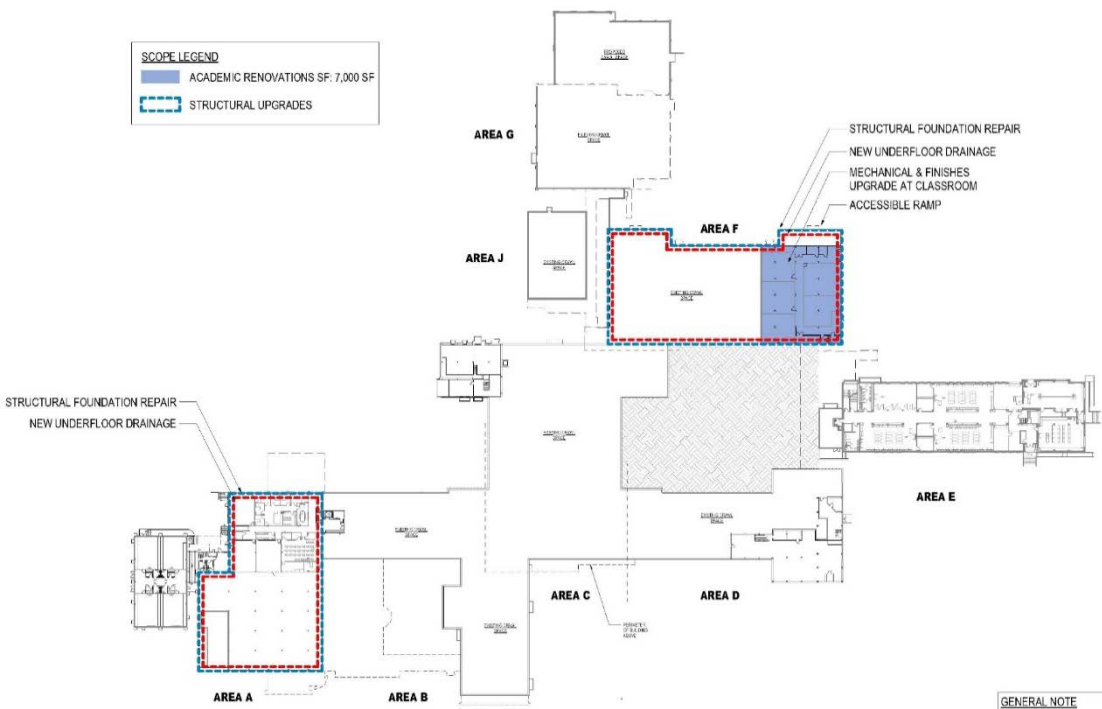




# Bond Update – Jefferson HS



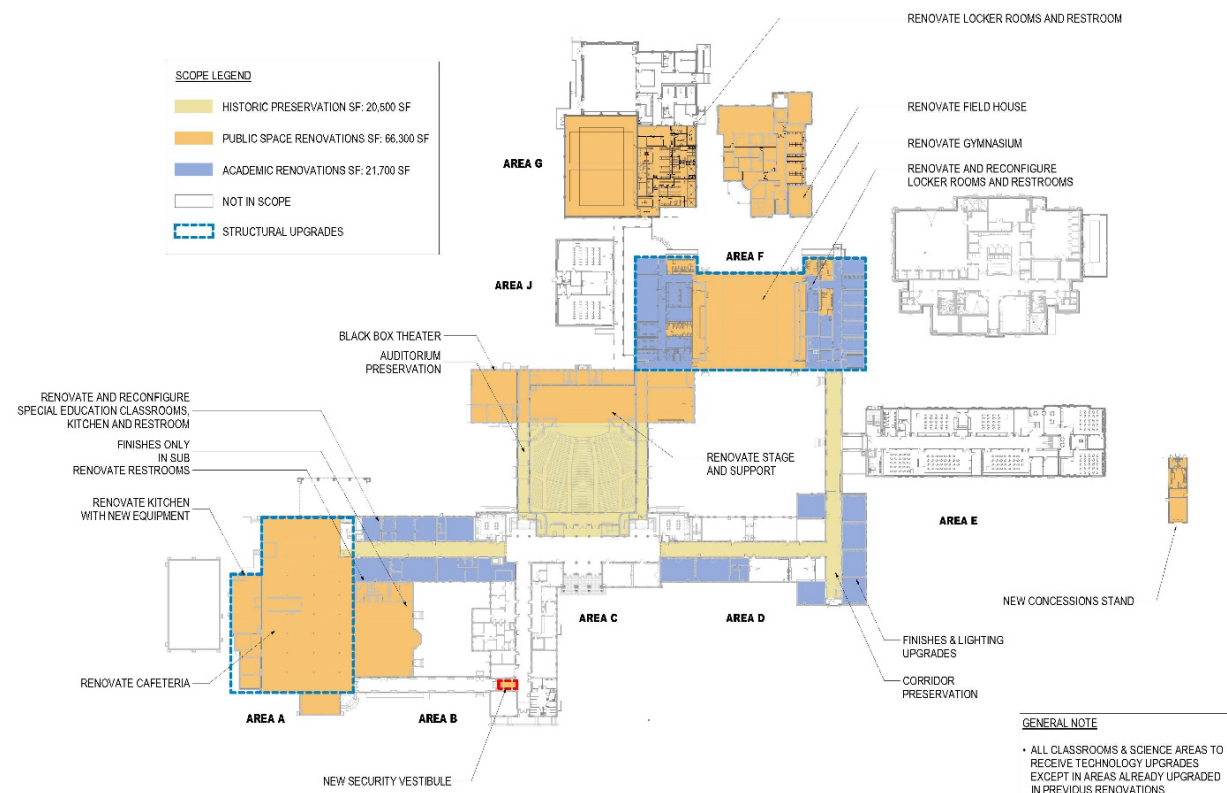
Proposed Site Plan



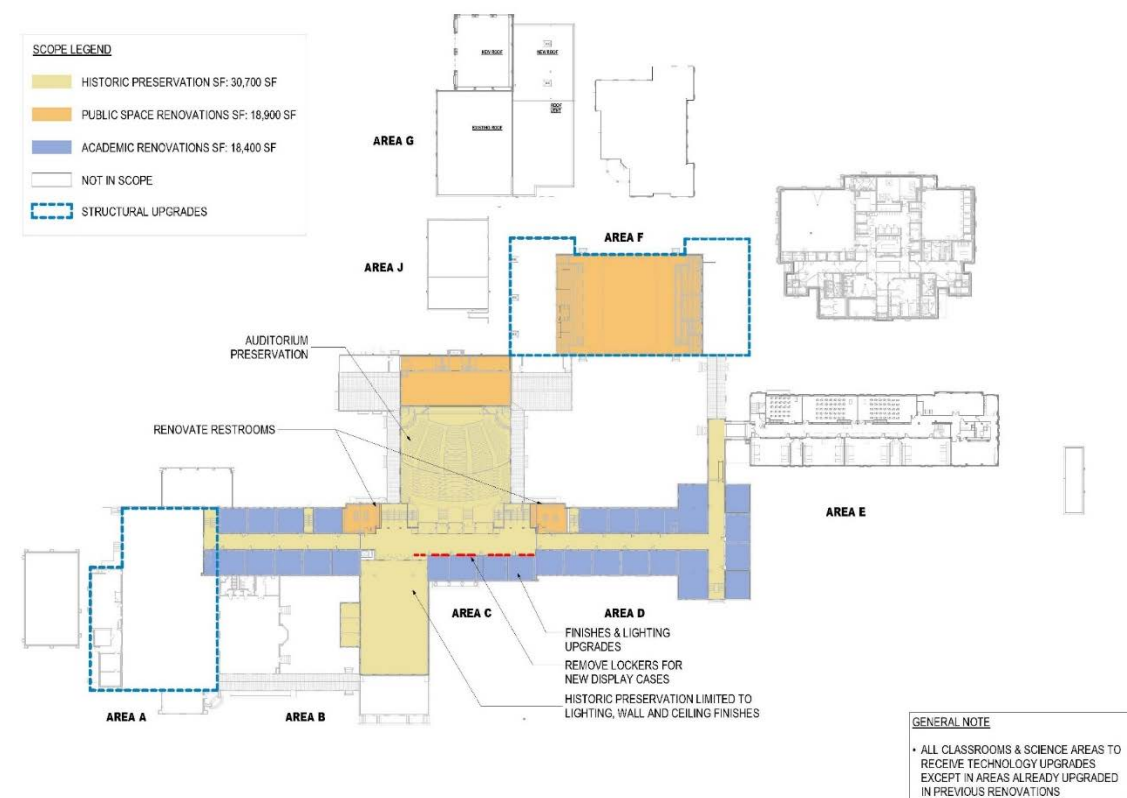
Proposed Basement Plan



# Bond Update – Jefferson HS



Proposed First Floor Plan

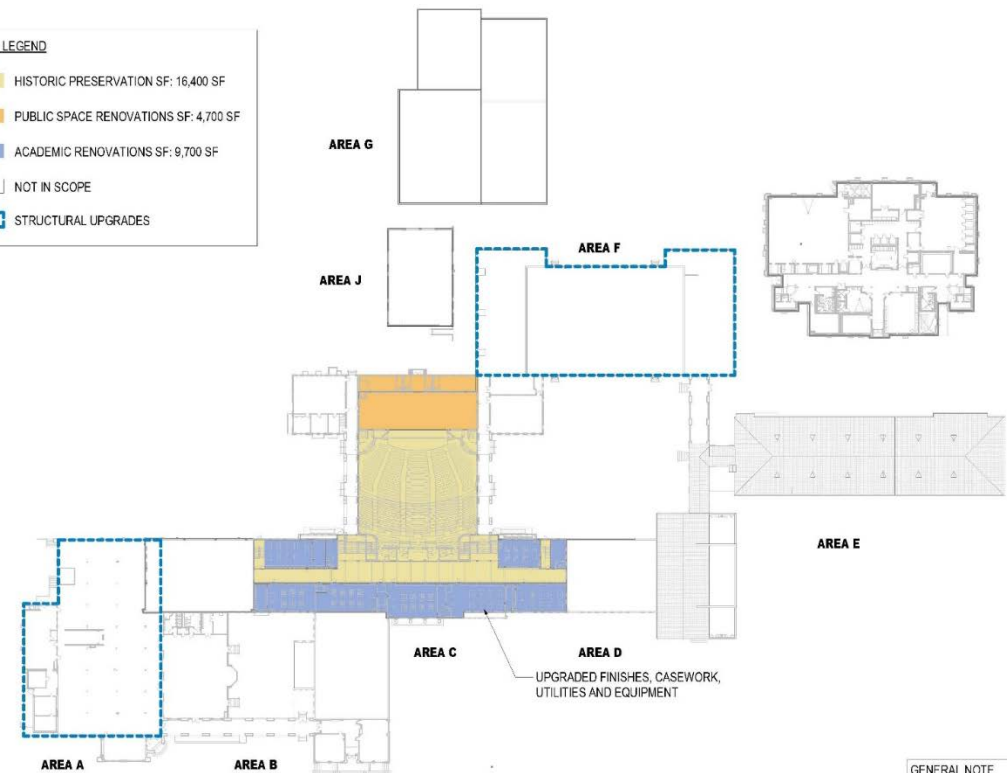


Proposed Second Floor Plan

# Bond Update – Jefferson HS

SCOPE LEGEND

	HISTORIC PRESERVATION SF: 16,400 SF
	PUBLIC SPACE RENOVATIONS SF: 4,700 SF
	ACADEMIC RENOVATIONS SF: 9,700 SF
	NOT IN SCOPE
	STRUCTURAL UPGRADES



Proposed Third Floor Plan

SCOPE LEGEND

	CLAY TILE ROOF REPLACEMENT SF: 40,300 SF
	TPO ROOF REPLACEMENT SF: 84,000 SF
	STRUCTURAL UPGRADES



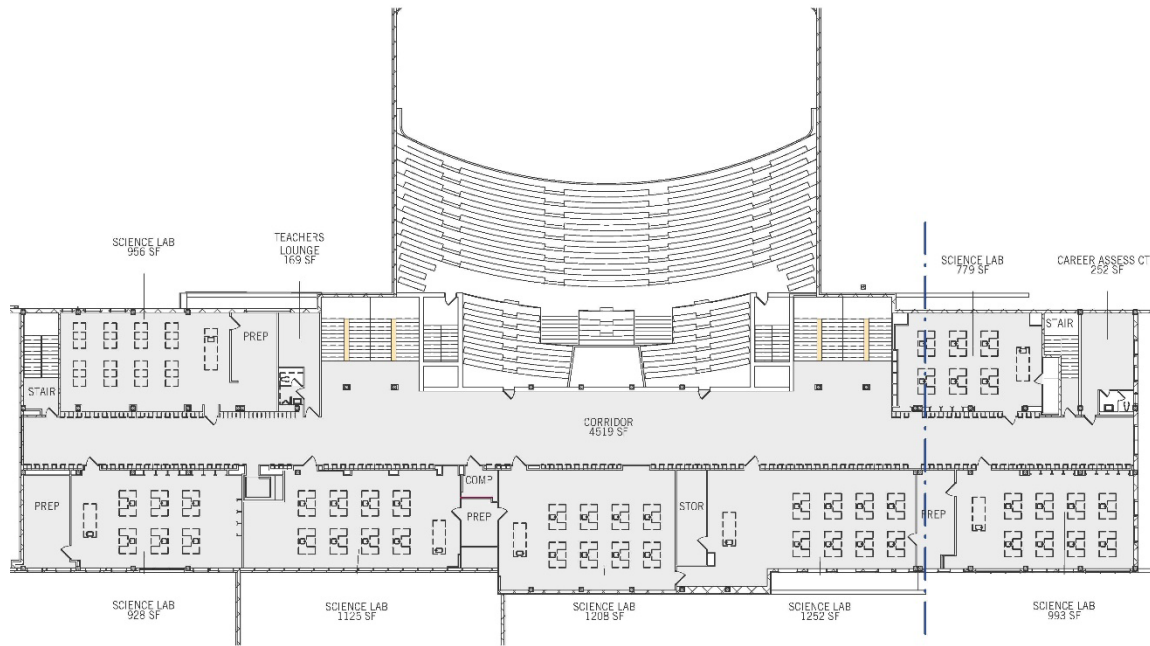
Proposed Roof Plan

GENERAL NOTE

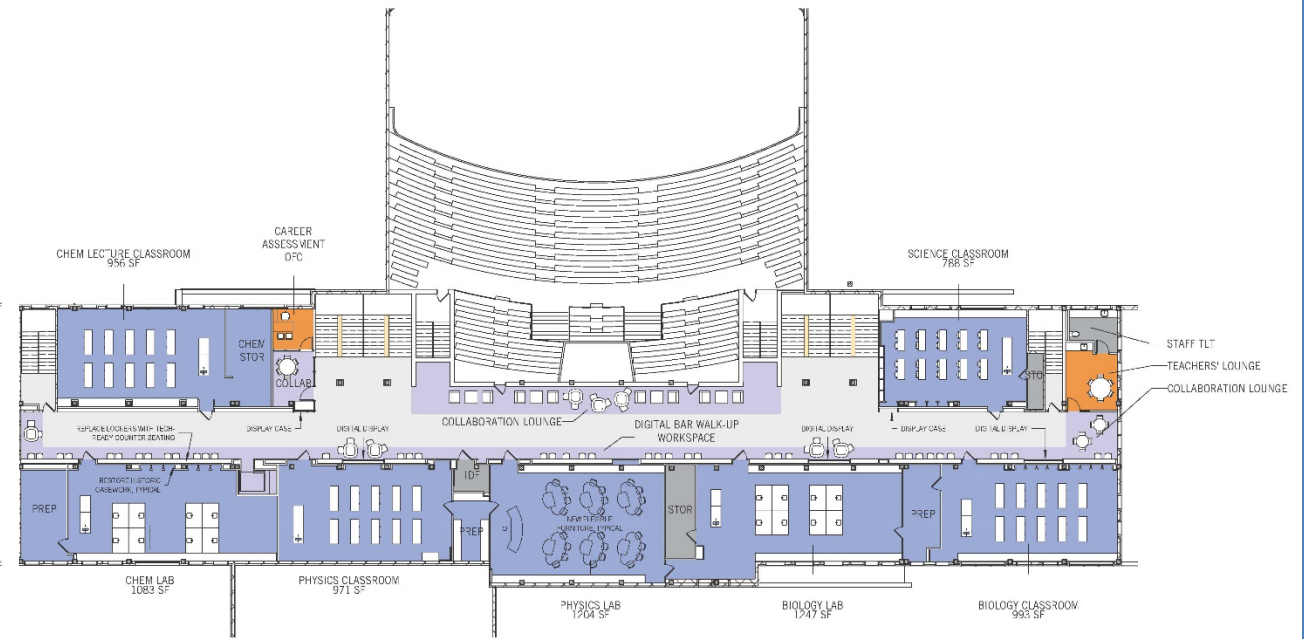
- ALL CLASSROOMS & SCIENCE AREAS TO RECEIVE TECHNOLOGY UPGRADES EXCEPT IN AREAS ALREADY UPGRADED IN PREVIOUS RENOVATIONS



# Bond Update – Jefferson HS

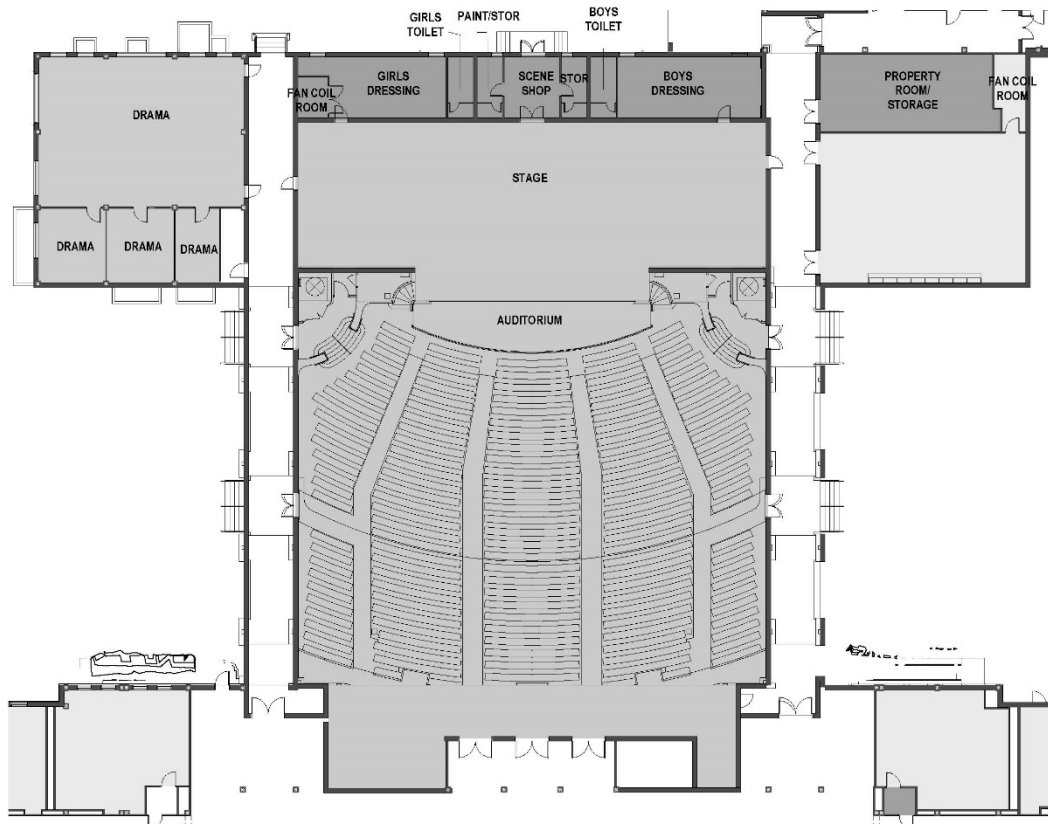


## Existing Third Floor Plan

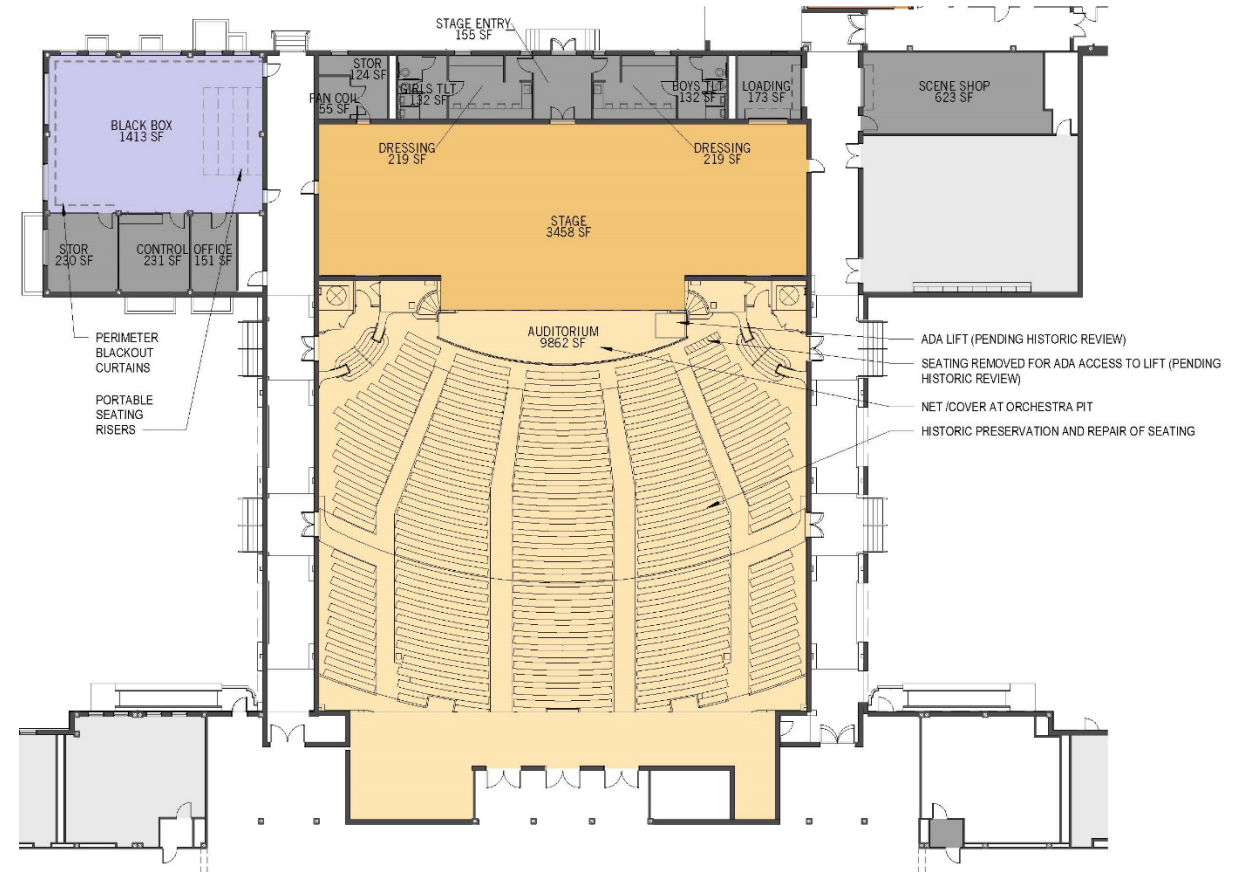


## Proposed Third Floor Plan

# Bond Update – Jefferson HS

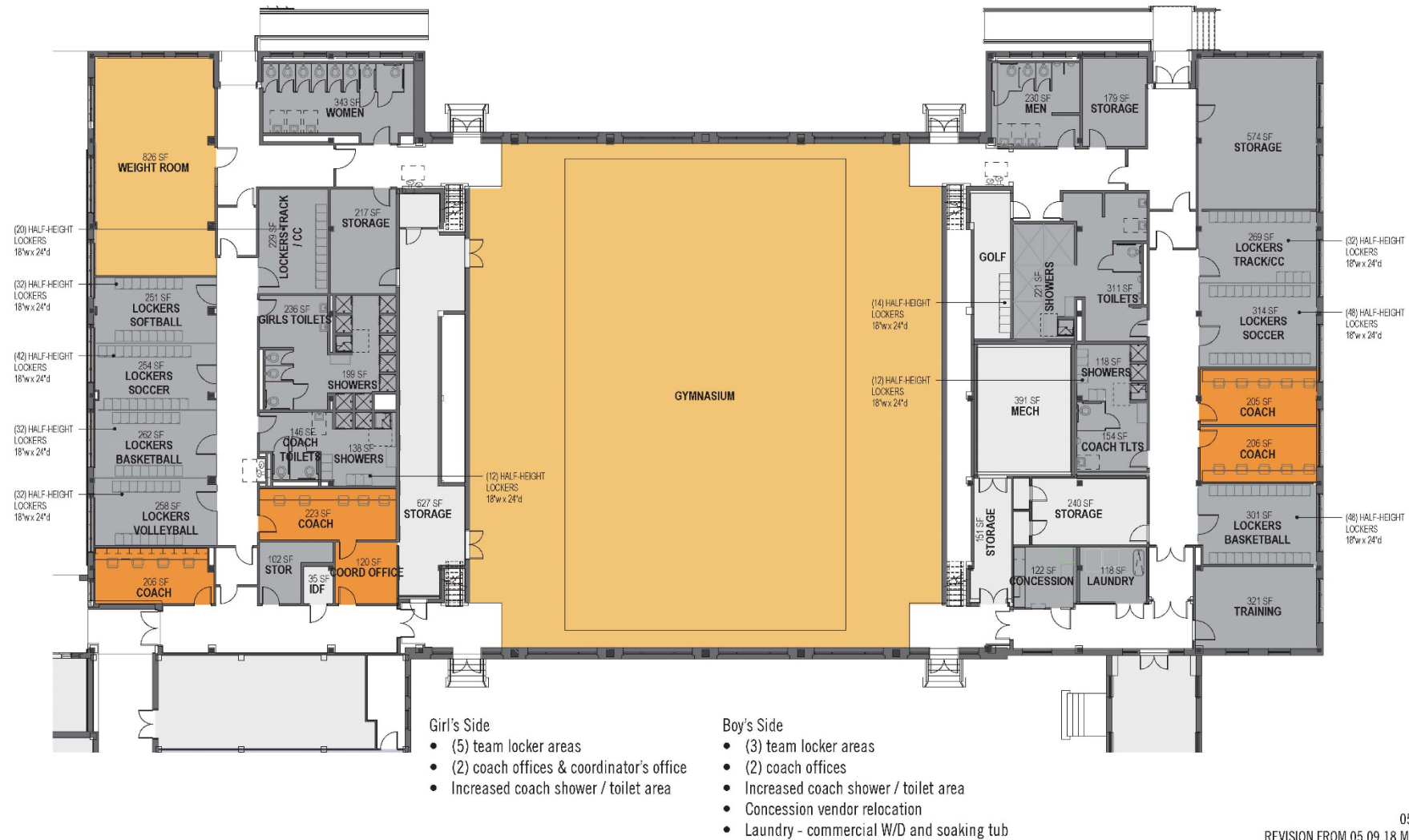


Existing Auditorium & Fine Arts



Proposed Auditorium & Fine Arts

# Bond Update – Jefferson HS



## Proposed Primary Gym

05.1  
REVISION FROM 05.09.18 MFF



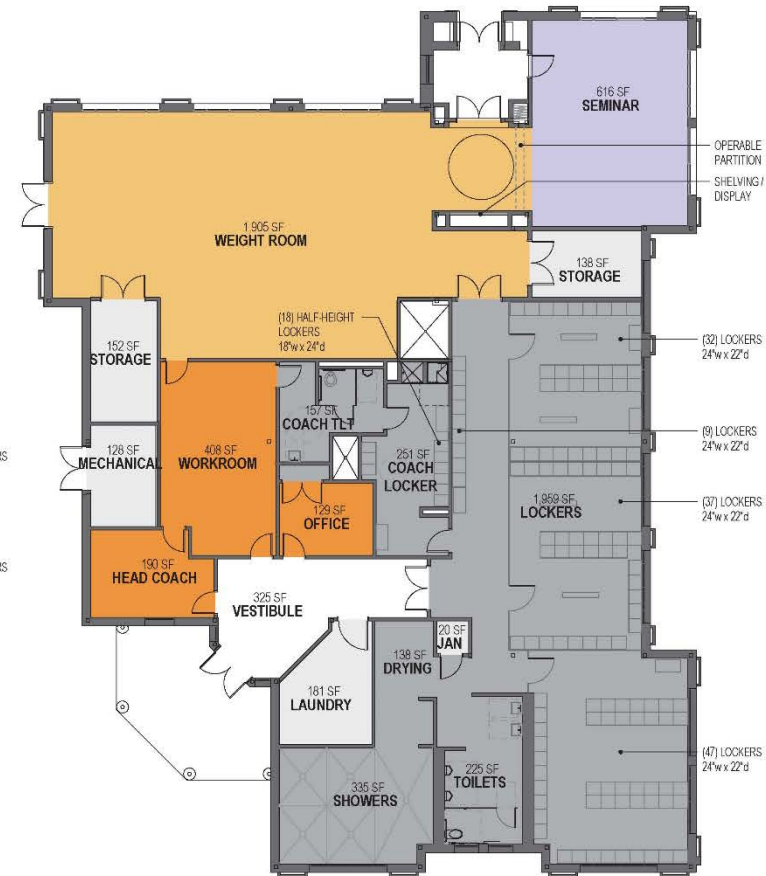


# Bond Update – Jefferson HS



**Proposed Secondary Gym**

- Practice Gym
  - Bleacher space for ~130 people
  - Separate Mens / Womens restrooms
  - Boys / Girls PE locker room
  - Split entry



- Fieldhouse**
- Weight Room SF - 43% increase from current size
  - Seminar room separated by operable partition with weight room
  - (3) caged locker areas - (125) lockers
  - Increased coach shower / restroom area

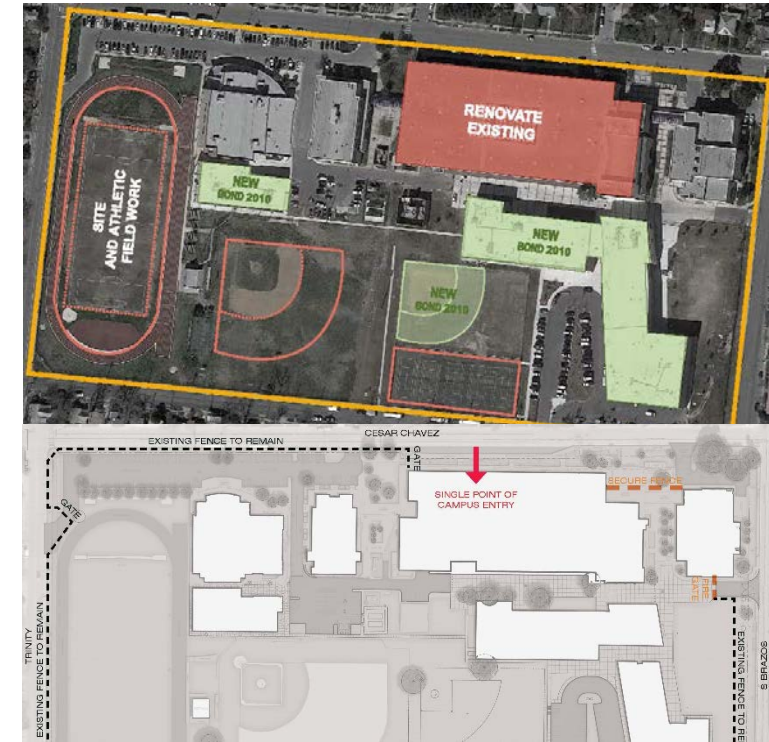
05.16.11

# Bond Update – Lanier HS

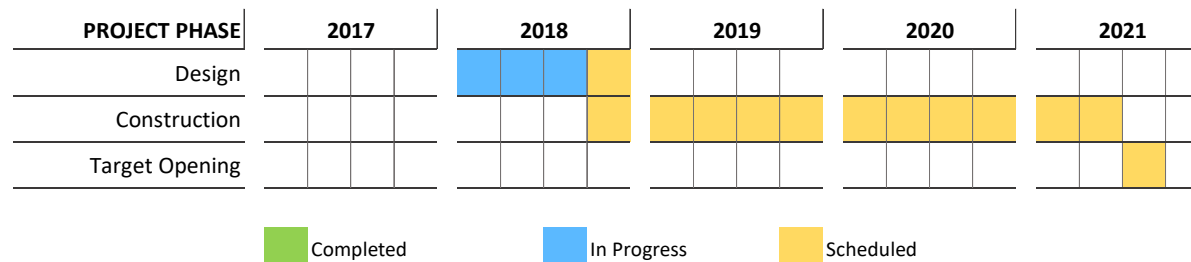
Board Member      Patti Radle  
 Architect          LPA  
 Construction Manager      Gilbane

**Bond scope** – Renovations and upgrades include, but not limited to:

- Classroom spaces (general learning, science, fine arts, special education)
- Restrooms
- Cafeteria/kitchen
- Auditorium
- Heating, ventilation and air conditioning
- Plumbing and electrical
- Technology infrastructure for new and renovated spaces
- Lighting
- Fire sprinkler systems
- Special needs accessibility in entryways, restrooms, and other areas
- Front-entry modifications to improve security
- Athletic track re-coating
- Roofing, building exterior and site improvements



**Project status:** Schematic Design phase complete



Budget Description	Budget	Committed Costs	Cost to Date	Uncommitted Costs
Construction	\$37,046,661			\$37,046,661
Soft Costs	\$5,158,396	\$2,194,945	\$106,839	\$2,963,451
FFE	\$1,406,835			\$1,406,835
Technology	\$468,945			\$468,945
Contingency	\$2,813,670			\$2,813,670
Project Total	\$46,894,508	\$2,194,945	\$106,839	\$44,699,563



# Bond Update – Lanier HS

Main Public Entrance



Proposed First Floor Plan



# Bond Update – Lanier HS



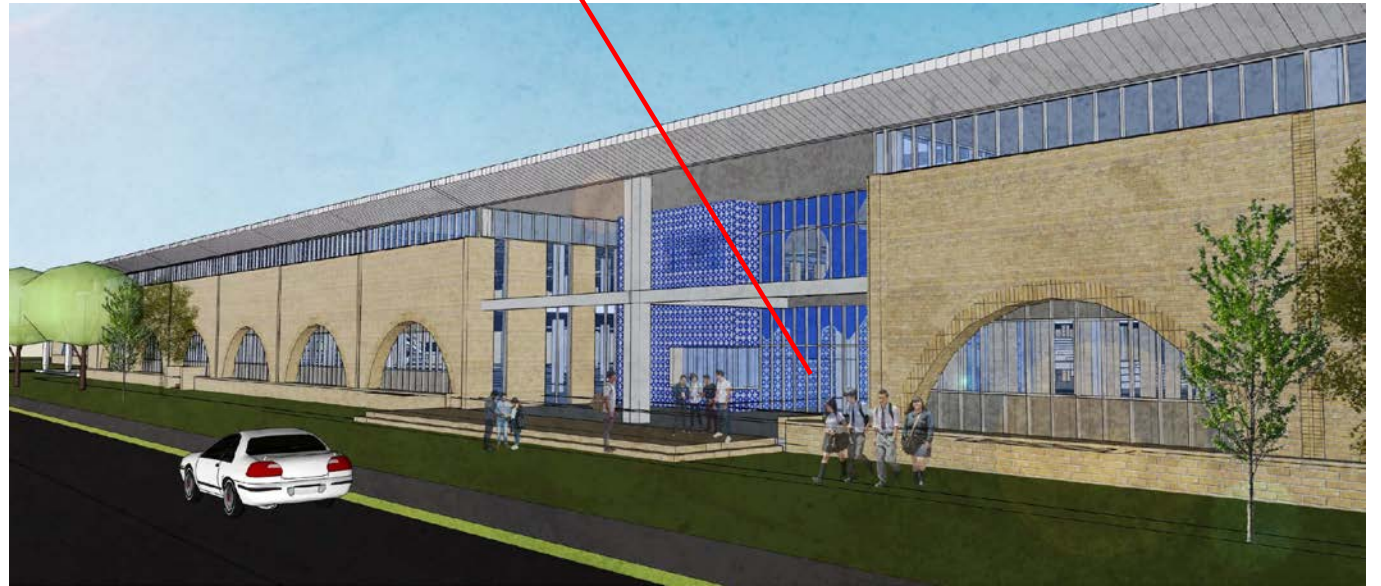
Proposed Second Floor Plan

# Bond Update – Lanier HS

Main Public Entrance



Existing Façade along Cesar Chavez



Proposed Façade along Cesar Chavez



# Bond Update – Lanier HS



Existing Courtyard



Proposed Courtyard



# Bond Update – Tafolla MS

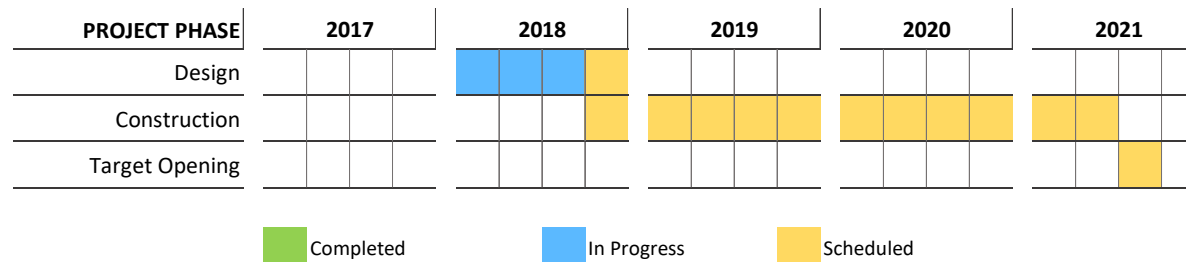
Board Member      Patti Radle  
 Architect          Alamo  
 Construction Manager      Gilbane

**Bond scope** – Renovations and upgrades include, but not limited to:

- Classroom spaces (general learning, science, fine arts, music, special education)
- Restrooms
- Cafeteria/kitchen
- Auditorium
- Heating, ventilation and air conditioning
- Plumbing and electrical
- Technology infrastructure for new and renovated spaces
- Lighting
- Fire sprinkler systems
- Special needs accessibility in entryways, restrooms, and other areas
- Front-entry modifications to improve security
- Roofing, building exterior and site improvements



**Project status:** Schematic Design phase 50% complete



Budget Description	Budget	Committed Costs	Cost to Date	Uncommitted Costs
Construction	\$19,813,350			\$19,813,350
Soft Costs	\$2,758,821	\$1,295,442	\$89,131	\$1,463,378
FFE	\$752,406			\$752,406
Technology	\$250,802			\$250,802
Contingency	\$1,504,811			\$1,504,811
<b>Project Total</b>	<b>\$25,080,190</b>	<b>\$1,295,442</b>	<b>\$89,131</b>	<b>\$23,784,748</b>



# Bond Update – Tafolla MS

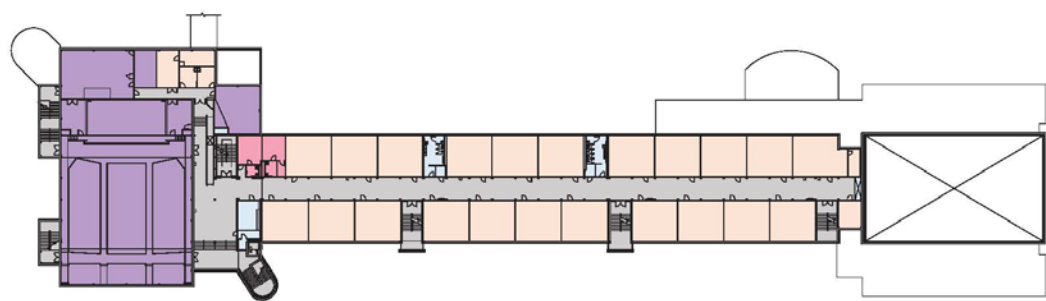


Existing First Floor Plan

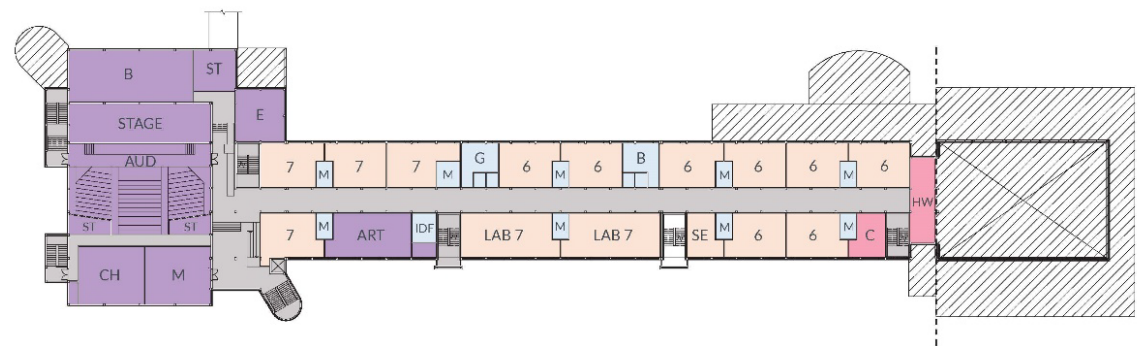


Proposed First Floor Plan

# Bond Update – Tafolla MS



Existing Second Floor Plan



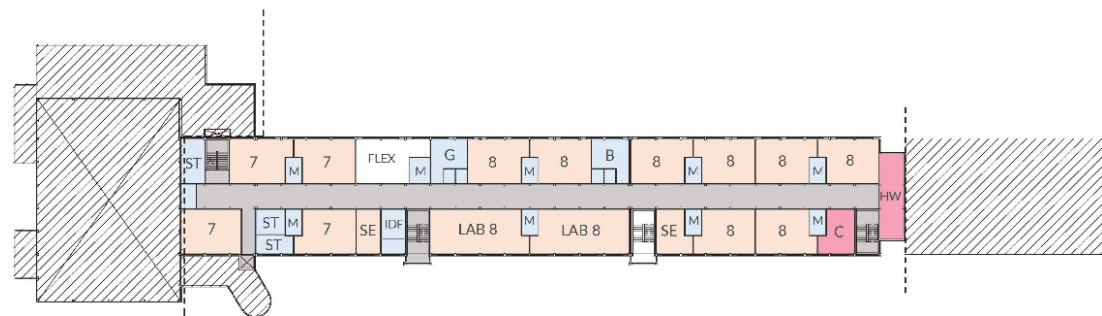
Proposed Second Floor Plan



# Bond Update – Tafolla MS



Existing Third Floor Plan



Proposed Third Floor Plan

QUESTIONS?