



School Rightsizing

Why Now?

Media Kit and Data for the Community

June 20, 2023

The Basic Story

San Antonio ISD wants to deliver on the promise of an excellent education to our students and our families, but we are faced with a fundamental problem.

Our enrollment and school aged population have been declining for more than two decades...

...and will continue to do so for at least five or ten more years.

We have resisted closing schools as our enrollment declined...

...so our schools have gotten emptier.

We invested in innovation, and it worked...

...but we have not recovered enough students to reverse the trend.

So our resources are spread too thin...

...creating inequities experienced by our students and their families.



Not a New Story

An SAISD study as early as 2008

Building a Stronger SAISD (Getting Better By Getting Smaller)

1 In 1968

77,000 students attended SAISD's 103 schools. Higher enrollment offered high levels of funding and rich curriculum for all students.



2 Mid-1990s

Aging population leads to fewer students. Fewer dollars are available to spend, so programs must be cut.

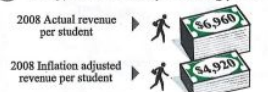


3 By 2006

Compared to 1970, there has been a 40% decline in enrollment. Revenue per student is capped. District will lose money without making cuts.



4 Today, we have less purchasing power



After adjusting for inflation, revenue per student is: **\$2,040 less**

Note: Inflation adjustment based on Year 2000's dollars

5 More budget cuts?

What are our options?

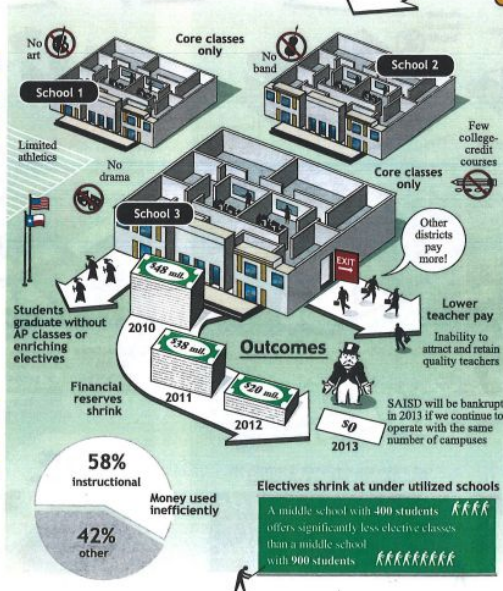
Increase revenue?

Improve efficiency?



What Happens if we Stay on Course?

Many underutilized schools



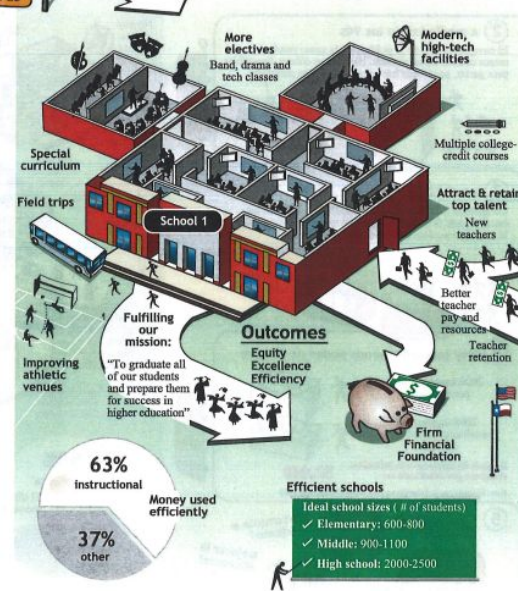
Critical junction.

Continue cutting budgets? Increase revenue? Improve efficiency?



What if we Change to a New SAISD?

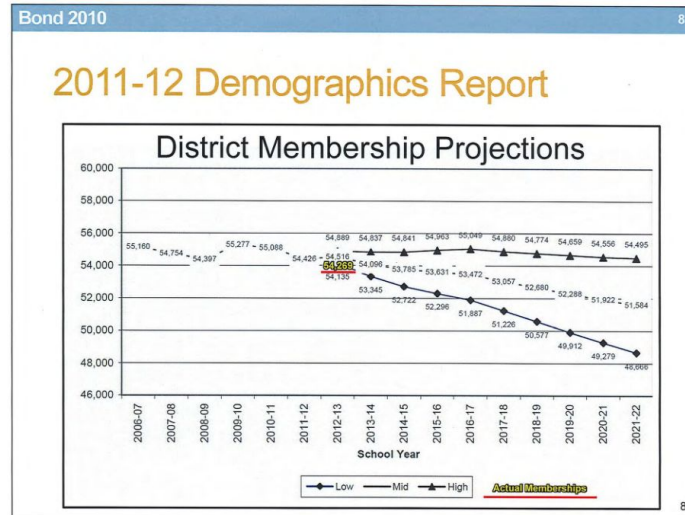
Fewer, but more efficient schools



Declining Enrollment

Since 1998, our enrollment has dropped every year, and we have lost a total of 18,326 students

- In 1998, our first grade cohort was 5,147. This year it was 3,006, down 229 from last year alone.
- **Our current enrollment, 45,285 is 3,381 less than the worst case estimate made in 2010-11 of 48,666.**

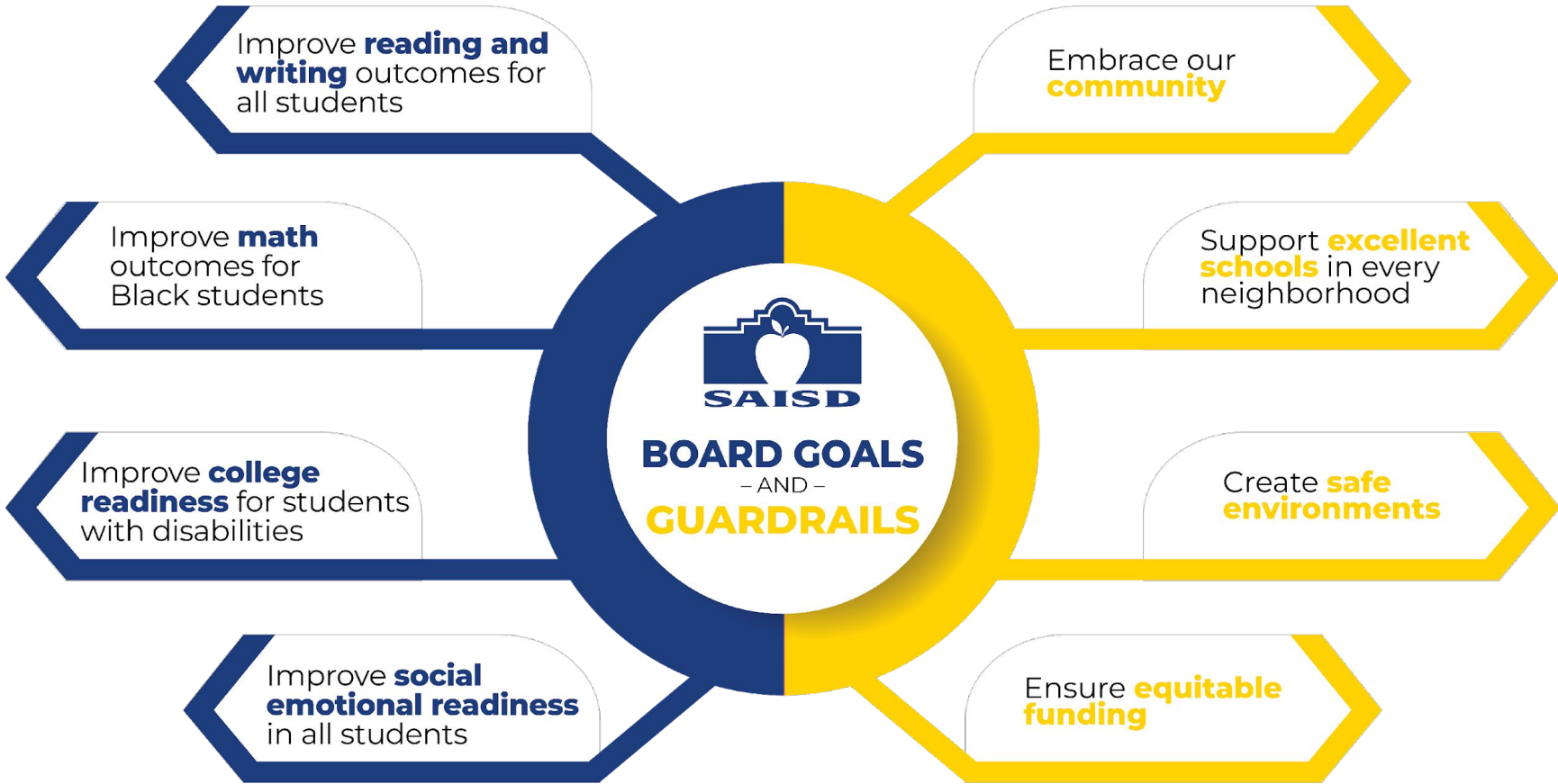


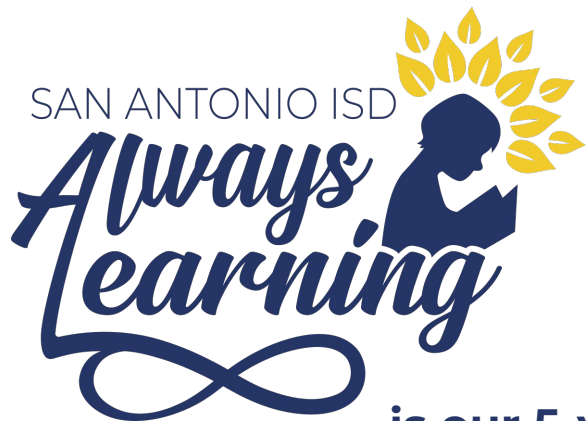


The Promise



The San Antonio ISD is an
inclusive familia that is the destination for
transformational learning
that makes the **impossible a reality**
by demonstrating an urgent and relentless
commitment to love, nurture, and teach
all our students as if they are our own so that they realize their
POWER TO SHAPE THE WORLD.





SAN ANTONIO ISD

Always Learning

is our 5-year strategic management plan that outlines how SAISD will meet the goals set by our Trustees.

There are four sections



- > **Our Students, Our Future**
- > **Our Staff, Our Strength**
- > **Our Organization, Our Heartbeat**
- > **Our Community, Our Familia**



The Structural Problem

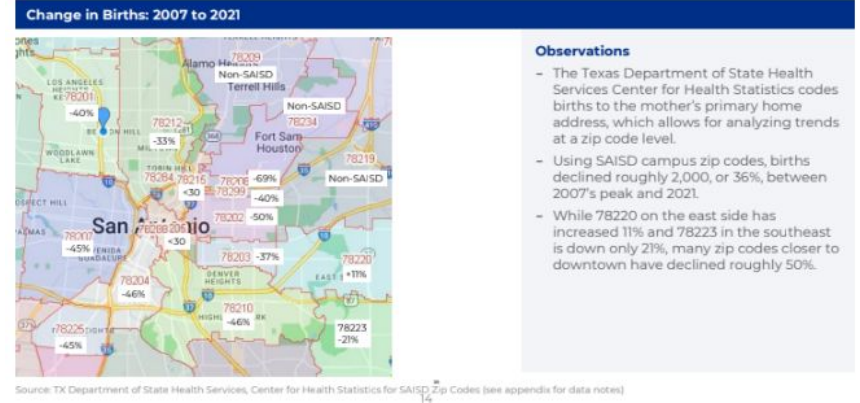


Declining School Age Population

According to Brian Eschbacher, a demographic researcher who reported to the Board of Trustees in November and January, our enrollment decline is tied to historic decreases in birthrates and school aged children across the United States, Texas, and our region and county, as well as within our district.

- The under 18 population has declined 14 percent since 2010.
- Births have declined 36 percent in San Antonio zip codes since 2007
 - **REMEMBER: it is infants who become first graders, so if that number is dropping faster than the number of big kids...**
 - **...and in 1998 we had 5,147 first graders. In 2023 we had 3221.**

Births declines vary by zip code of the city, though many have dropped by roughly half since 2007's peak



Roughly the Same Number of Schools

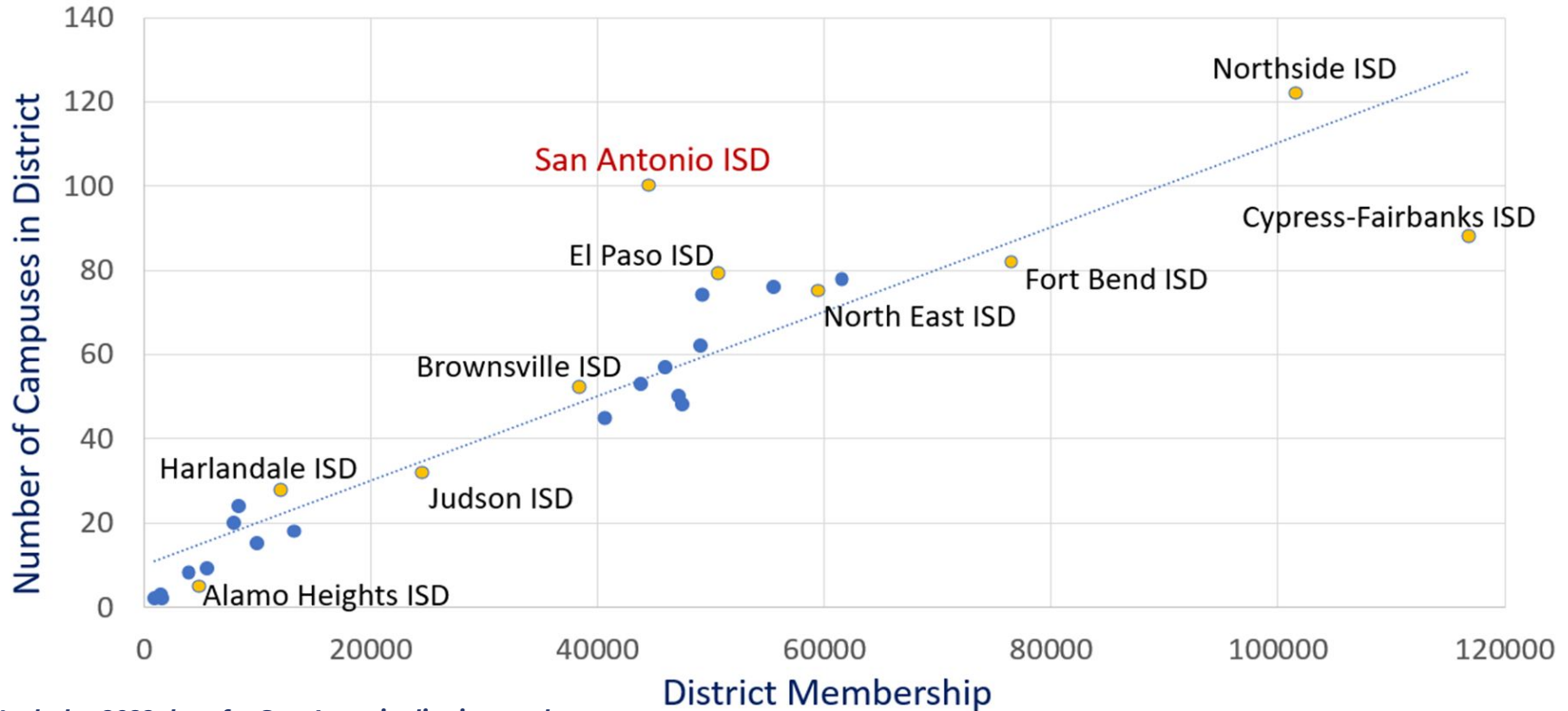


- **As District membership declined...**
 - 56,812 students enrolled in 2003-04
SAISD was ranked 10th in the State
 - 44,568 student enrolled in 2021-22
SAISD ranking fell to 24th in the State



- **...the number of schools we operate remained roughly the same.**
 - 106 Campuses in 2003-04
SAISD was ranked 5th in the State
 - 100 Campuses in 2021-22
SAISD was ranked 7th and remains among top 10

More Schools per Student



**Includes 2022 data for San Antonio districts and similar size districts in Texas.*

Our Schools are Emptier

- **In 2010-11...**

- San Antonio ISD had 55,086 students and...
- ...8,908,000 total square feet of schools, not counting portable buildings, or...
- **...161.7 school square feet per student**



- **...in 2022-23**

- We have 44,676 students and...
- ...9,490,000 total square feet of schools.
- **If we kept the same ratio of square feet to students, we be 2,265,891 square feet smaller – an amount of excess space greater than all 13 of our middle schools or all 13 of our PK8 academies.**

We Are Winning Back Families, but...

Since 2014, San Antonio ISD has transformed 35 schools, 28 of them using SB 1882 powers.

- This effort was successful, bringing in at least 2,244 in 2021 (more than our PK enrollment that year) out of district students. In 2022, largely due to the success of those transformed schools, San Antonio ISD leads the region in students who transfer in from another school district.
 - We do not have way to estimate the number of San Antonio ISD students who stayed within the district because of those offerings.

2,244 students from outside SAISD transferred into the district in 2021

Resident District	# Students
NORTHSIDE ISD	594
NORTH EAST ISD	420
EAST CENTRAL ISD	247
EDGEWOOD ISD	223
JUDSON ISD	187
HARLANDALE ISD	161
SOUTHWEST ISD	105
SOUTH SAN ANTONIO ISD	97
SOUTHSIDE ISD	65

SAISD School Attending	# Students
ADVANCED LEARNING ACADEMY	242
YOUNG WOMEN'S LEADERSHIP	175
MARK TWAIN DUAL LANGUAGE	152
YOUNG MEN'S LEADERSHIP	120
BRACKENRIDGE HS	100
BONHAM ACADEMY	98
HAWTHORNE PK-8 ACADEMY	98
CAST TECH HS	98
YWLA AT PAGE	96
TRAVIS EARLY COLLEGE HS	90
JUVENILE DETENTION CENTER	88
EDISON HS	83
STEELE MONTESSORI	70
FOX TECHNICAL HS	70
BURBANK HS	56
LAMAR EL	56
CAST MED H S	52
IRVING DUAL LANGUAGE	50

Observations

Choice schools are many of the SAISD schools that residents of neighboring districts transfer in to attend at the highest rates. Based on continued data validation, these rates of transfers in will likely rise.

Source: PEIMS snapshot, Data captured on 10/29/2021

29

Even though SAISD's out of district transfer is nearly four times greater than the closest ISD in the area, in the same period our enrollment still went down by 8,359 since 2014.



School Program Inequities



Even though our smallest schools are more expensive to operate, they offer fewer programs and services. Smaller schools are more likely to have...

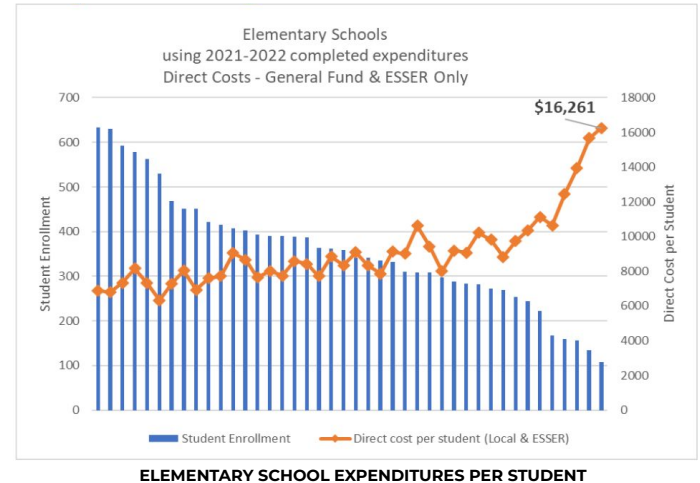
- ...split classes, or mixed grade classrooms.
- ...teachers with no grade level or subject area partners to grow with and share responsibilities.
- ...fewer police officers or mental health and other student services.
- ...fewer electives or academic choice opportunities, including extra curricular activities.



Resource Inequities

The cost per student at our smallest elementary schools is **2.4 times higher** than the cost per student at our largest elementary school.

Largest elementary | 644 students | \$6,888/st
Smallest elementary | 109 students | \$16,261/st



This inequity holds true for all school types

High Schools | 2.3 times higher | \$18,133 : \$8,018

Middle Schools | 1.4 times higher | \$11,696 : \$8,144

Academies | 1.5 times higher | \$10,643 : \$7,667



The Process Called for by Our Resolution

Governance Milestones and Communications Commitments

June 20: Board Acts on the Rightsizing Resolution

- After the Board of Trustees passes the Rightsizing Resolution, staff will develop a Rightsizing Framework – a decision making tool organizes criteria that will be used to identify schools, including both schools to be closed and schools suitable to receive students.
- Through the summer and into September, staff will gather extensive feedback on the Rightsizing Framework.
 - This will include, but not be limited to, holding two regional meetings in each of San Antonio ISD's the geographic feeder patterns of our seven comprehensive high schools.
- This feedback will result in changes to the Rightsizing Framework that inform staff's Initial Recommendation.

September 18: Staff Presents the INITIAL Rightsizing Recommendation

- Immediately after staff makes its Initial Recommendation to the Board it will inform the affected staff, families and students.
- Between September 18 and October 27, staff will gather extensive feedback on the Initial Recommendation.
 - This will include, but not be limited to, holding two regional meetings in each of San Antonio ISD's the geographic feeder patterns of our seven comprehensive high schools.
- This feedback may result in changes to the INITIAL Rightsizing Recommendation staff presents to the Board of Trustees.

November 13: Board Acts on the FINAL Rightsizing Recommendation

- The Trustees will vote on Recommendation as a total package, not one school at a time.
- Should the Trustees approve the Rightsizing Recommendation, a Transition Team of experienced educators and leaders will mobilize immediately to support students, families and staff.
 - The Transition Team will pay special attention to vulnerable students and families, including recent immigrants, dual language students and families with students in self-contained classrooms.
 - District staff will meeting with each communities at each closed school and each receiving school at least twice after the Board's decisions.



Many demographers have focused on the long-term risk to Social Security or Medicare posed by the lower birthrates, but K-12 education is actually the first institution to be dramatically affected. Shrinking is hard. But it does not have to be catastrophic and if done thoughtfully can even be an opportunity to restart or build higher-quality schools.

Van Schoales & Brian Eschbacher
EdWeek, February 2022