



# Superintendent's Message



**Pedro Martinez,**  
Superintendent

Welcome to the San Antonio Independent School District!

I hope you find this Enrollment Guide helpful as you navigate the many options we offer, and learn about our schools and programs designed to best meet the diverse needs of our students.

Here at SAISD, our goal is to develop lifelong learners who graduate feeling empowered and equipped to pursue their dreams.

We have high expectations throughout our schools with programs to support our students from their start in full-day prekindergarten all the way through high school graduation. In addition, two alumni support coordinators continue the relationship with students through their first year in college to ensure they are supported and on track toward a college degree.

SAISD offers a wide variety of offerings for students to pursue, including career exploration programs, dual language, advanced academics and the International Baccalaureate framework, as well as extensive athletics, fine arts and JROTC/LOTC opportunities.

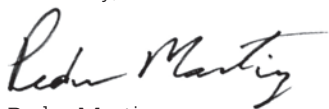
Non-boundary choices by application include magnet programs at the high schools, and a number of schools with diverse areas of focus and learning environments, including single-gender schools, early college high schools, and career-themed, industry-led schools.

Along with traditional school models, we also offer academies with non-traditional grade ranges such as PK-8.

This guide features details on each SAISD school, as well as information on our services to support students and families.

I thank you for taking the time to review this guide and to learn more about what all SAISD has to offer.

Sincerely,



Pedro Martinez  
SAISD Superintendent

## Board of Trustees



**Patti Radle,** President  
(District 5)



**Arthur V. Valdez,** Vice President  
(District 4)



**Debra Guerrero,** Secretary  
(District 3)



**Ed Garza,** Trustee  
(District 7)



**Steve Lecholop,** Trustee  
(District 1)



**Christina Martinez,** Trustee  
(District 6)



**Alicia Perry,** Trustee  
(District 2)

■ Message from the Superintendent and Board of Trustees.....	2
■ Index of Schools.....	4
■ SAISD-at-a-Glance.....	5
■ Directory / Keeping Parents Connected.....	6
■ TEA Accountability Rating System .....	7
■ Enrollment Information .....	8
■ Beginning Your School Search.....	9
■ Choice Schools and Programs.....	10
■ Early Learning .....	12
o Head Start	
o Pre-K	
o Tuition-based Pre-K	
o Kindergarten	
■ Meeting Your Student's Needs .....	14
o Bilingual and ESL Programs	
o Career and Technical Education	
o Gifted and Talented	
o Homeless Support Services / Foster Care	
o Immigrant and Refugee Students	
o School Meals	
o Social Services	
o Special Education	
o Student Health Services	
o Transportation	
o Uniform Assistance	
■ Bus Safety Program / Uniform Guidelines .....	17
■ Feeder Patterns .....	18
■ SAISD Mini Map.....	20
■ Graduation Plans .....	22
■ Reference Guide .....	23
■ Schools.....	25
o High Schools	
o Middle Schools	
o Academies	
o Elementary Schools	
o Early Childhood Education Centers	
o Schools by Referral	

## ■ High Schools\*

Brackenridge HS .....	26
Burbank HS .....	26
CAST Med HS .....	27
CAST Tech HS .....	27
Edison HS .....	28
Fox Tech HS .....	28
Highlands HS .....	29
Sam Houston HS .....	29
Jefferson HS .....	30
Lanier HS .....	30
Phoenix Middle College .....	31
St. Philip's ECHS .....	31
Travis ECHS .....	32

## ■ Middle Schools

Davis MS .....	34
Harris MS .....	34
Longfellow MS .....	35
Lowell MS .....	35
Poe MS .....	36
Rhodes MS .....	36
Rogers MS .....	37
Tafolla MS .....	37
Whittier MS .....	38

## ■ Academies (Non-traditional grade ranges)

*Advanced Learning Academy (PK-12) .....	40
Ball Academy (PK-8) .....	40
Beacon Hill Academy (PK-8) .....	41
Bonham Academy (K-8) .....	41
Bowden Academy (PK-8) .....	42
Cotton Academy (PK-8) .....	42
Crockett Academy (PK-8) .....	43
Douglass Academy (PK-8) .....	43
Fenwick Academy (PK-8) .....	44
Forbes Academy (PK-8) .....	44
Foster Academy (PK-8) .....	45
Green Academy (K-8) .....	45
Hawthorne Academy (K-8) .....	46
Herff Academy (PK-8) .....	46
Irving Dual Language Academy (PK-3 & 6) .....	47
Japhet Academy (PK-8) .....	47
M.L. King Academy (K-8) .....	48
Margil Academy (PK-7) .....	48
Mission Academy (PK-8) .....	49
Ogden Academy (PK-8) .....	49
Riverside Park Academy (PK-8) .....	50
Will Rogers Academy (PK-8) .....	50
Steele Montessori Academy (PK-3) .....	51
Mark Twain Dual Language Academy (PK-5) .....	51
Woodlawn Academy (K-8) .....	52
*Young Men's Leadership Academy (4-10) .....	52
*Young Women's Leadership Academy (6-12) .....	53

## ■ Elementary Schools

Arnold Elementary .....	56
Barkley-Ruiz Elementary .....	56
Baskin Elementary .....	57
J.T. Brackenridge Elementary .....	57
Briscoe Elementary .....	58
Cameron Elementary .....	58
Carvajal Elementary .....	59
Collins Garden Elementary .....	59
De Zavala Elementary .....	60
Franklin Elementary .....	60
Gates Elementary .....	61
Graebner Elementary .....	61
Highland Hills Elementary .....	62
Highland Park Elementary .....	62
Hillcrest Elementary .....	63
Hirsch Elementary .....	63
Huppertz Elementary .....	64
Kelly Elementary .....	64
Sarah King Elementary .....	65
Lamar Elementary .....	65
Madison Elementary .....	66
Maverick Elementary .....	66
Miller Elementary .....	67
Neal Elementary .....	67
Pershing Elementary .....	68
Schenck Elementary .....	68
Smith Elementary .....	69
Democracy Prep at Stewart Elementary .....	69
Storm Elementary .....	70
Washington Elementary .....	70
Wilson Elementary .....	71
Woodlawn Hills Elementary .....	71
YWLA Primary .....	72

## ■ Early Childhood Education Centers

Carroll ECEC .....	74
Gonzales ECEC .....	74
Knox ECEC .....	75
Nelson ECEC .....	75
Tynan ECEC .....	76

## ■ Schools by Referral

Brewer Academy .....	78
Cooper Academy at Navarro .....	78
Estrada Achievement Center .....	79
Healy-Murphy Learning Center .....	79
Texans Can Academy at Highlands High School .....	80

## Our Mission

To transform SAISD into a national model urban school district where every child graduates and is educated so that he or she is prepared to be a contributing member of the community.

## Our Vision

Our primary purpose of improving lives through a quality education is driven by an unrelenting determination to graduate all of our students and prepare them for success in higher education. Our ideology is reflected in our fundamental beliefs, commitments and core values that guide us in our daily practices.

## Core Values

- ◆ Student Centered
- ◆ High Expectations
- ◆ Commitment
- ◆ Passion
- ◆ Integrity
- ◆ Respect
- ◆ Teamwork

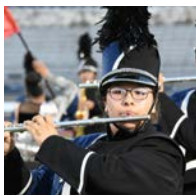
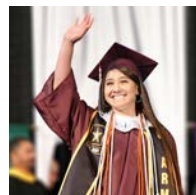
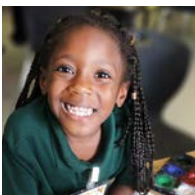
.....  
**Educating  
children since**  
**1854**  
.....

.....  
**Approximately**  
**49,000**  
**students**  
.....

.....  
**Approximately**  
**7,400**  
**employees**  
.....

- ◆ **Three** National Blue Ribbon schools
- ◆ **Four** of the U.S. News & World Report's 2018 Best High Schools in the U.S.
- ◆ **One** of the Washington Post's 2017 America's Most Challenging high schools
- ◆ **Three** Early College High Schools

- ◆ San Antonio's only public Montessori Academy
- ◆ San Antonio's only public all-girls schools
- ◆ San Antonio's only public all-boys school
- ◆ Only District in the county to offer the International Baccalaureate Programme at the elementary, middle and high school levels



# Directory & Keeping Parents Connected

## IMPORTANT CONTACTS

### Office of Access and Enrollment Services

Web: [www.saisd.net/enroll](http://www.saisd.net/enroll)

Email: [enroll@saisd.net](mailto:enroll@saisd.net)

Phone: (210) 554-2660

Text: (210) 309-3259

### Career and Technical Education (210) 554-2610

### Dual Language and Bilingual Programs (210) 554-2590

### Early Learning

- Head Start (210) 554-2410
- Pre-Kindergarten (210) 554-2410
- Kindergarten (210) 554-2660

### Gifted and Talented (210) 554-2555

### Homeless & Foster Care Support Services (210) 554-2635

### Immigrant and Refugee Students (210) 554-2592

### School Meals (210) 554-2290

### Social Services (210) 554-2635

### Special Education (210) 554-2406

### Student Health Services (210) 554-2435

### Transportation (210) 223-9792

### Uniform Assistance (210) 554-2600

## KEEPING PARENTS CONNECTED

### MySAISD Mobile App

The mySAISD Parent Access mobile app is a resource that provides a child's school information, including grades and attendance. It is available for download on Google Play and the Apple App Store. Once parents have installed the app, they will be prompted to begin the registration process. Parents will need to obtain a mySAISD Parent Access key from their child's campus – typically from the receptionist or data clerk. There is one key per student so parents will need a separate key for each child they have in the District.

### SchoolMessenger Notifications

The ability to communicate with parents and guardians is an important part of the partnership between home and school. The District uses a notification system to connect with parents through telephone notifications and email messages. The SchoolMessenger system provides notification services for emergency broadcasts, student attendance alerts, upcoming school events such as statewide testing and parent meetings, and other communications that may impact the safety and academic performance of their child.

### School Locator

On the home page of the District's website, parents and guardians are able to determine the neighborhood schools that service their home address. This tool is found in the Find It Fast section of the home page under the Parent tab.

### School Bus Stop Locators

Through the SAISD Bus Stop Locator online tool – also found in the Find It Fast section of the District's home page under the Parent tab – parents and guardians are able to determine school bus stop locations and pickup times for their home address. See page 16 of this guide for transportation guidelines.

### School Cafeteria Menus

School cafeteria menus are shared through Nutrislice. Parents may review menus from the Child Nutrition Services' interactive website at [www.saisd.nutrislice.com](http://www.saisd.nutrislice.com) or download the Nutrislice mobile app from either Google Play or the Apple App Store. In addition to menus, Nutrislice also provides nutritional and allergen information.

### Social Media Channels

The District publishes timely and meaningful content on Facebook, Twitter and Instagram. Some campuses also use social media channels to communicate with parents. Links to social media channels are found on the home pages of the District and participating campuses.

### Connect With Us



[/SANANTONIOISD](#)



[/SAISD](#)



[/SANANTONIOISD](#)



[WWW.SAISD.NET](http://WWW.SAISD.NET)

# TEA Accountability Rating System

## DISTRICT AND SCHOOLS

Ratings in this enrollment guide reflect the 2017-18 Texas Education Agency (TEA) Accountability Rating System, the most current rating at the time of printing. Every school received one of two ratings:

### Met Standard or Improvement Required

The TEA looked at the following areas in determining a school or district's accountability rating:

#### Student Achievement

- STAAR Performance at Approaches, Meets and Masters Grade Level
- Graduation Rate (District and HS Only)
- College, Career and Military Readiness Rate (District and HS Only)

#### Student Progress

- Individual student growth in Reading and Math
- Student Achievement scores measured against Economic Disadvantaged Percentage

**SAISD earned a  
"C" in 2018**

#### Closing Performance Gaps

- Achievement in Reading and Math
- Student Growth in Reading and Math (ES/MS) or Federal Graduation Rate (HS)
- English Language Proficiency (current ELL students only)
- Student Achievement Performance by Group (ES/MS) or College, Career and Military Readiness Rate by Group (HS)

Individual school ratings are indicated in the school descriptions of this enrollment guide.

Beginning in 2017-18, school districts received A-F ratings. SAISD earned a C in 2018. In the 2018-19 school year, both districts and campuses will receive A-F ratings.

## DISTINCTION DESIGNATIONS

Schools that received the Met Standard rating for 2018 were eligible for special honors called Distinctions. There were seven possible distinctions:

- Academic Achievement in English Language Arts (ELA)/Reading
- Academic Achievement in Mathematics
- Academic Achievement in Science
- Academic Achievement in Social Studies
- Top 25 Percent: Student Progress
- Top 25 Percent: Closing Performance Gaps
- Postsecondary Readiness

**For 2018,  
34 SAISD schools  
earned 1 or more  
Distinctions**

Distinctions earned by SAISD schools in 2018 are indicated in the school descriptions of the enrollment guide.

## STUDENTS

The State of Texas Assessments of Academic Readiness (STAAR) program includes annual assessments for:

- Reading and Mathematics, Grades 3–8
- Writing at Grades 4 and 7
- Science at Grades 5 and 8
- Social Studies at Grade 8
- End-of-course (EOC) assessments for English I, English II, Algebra I, Biology and U.S. History

TEA publishes STAAR report cards for all students every year to highlight proficiency, growth and improvement. There are four possible performance levels that represent how well students have learned grade-level content.

- **Masters Grade Level:** Mastery of the course knowledge and skills is shown – student is on-track for college and career readiness.
- **Meets Grade Level:** Strong knowledge of course content – student is prepared to progress to next grade.
- **Approaches Grade Level:** Some knowledge of course content, but may be missing critical elements – student needs additional support in the coming year.
- **Did Not Meet Grade Level:** No basic understanding of course expectations is shown – student may need significant support in the coming year.

Parents may learn more by visiting [TexasAssessment.com](http://TexasAssessment.com)

# Enrollment Information

The Office of Access and Enrollment Services is a one-stop-shop for parents and guardians needing information on student enrollment, the registration process and transfer requests.

Below are the initial steps for registration:

## WHO NEEDS TO REGISTER

- Students new to SAISD
- Returning students

## WAYS TO REGISTER

- Online at [www.saisd.net/enroll](http://www.saisd.net/enroll). Click on "Register Online."
- Via SchoolMint mobile app. Enter **San Antonio ISD** as the organization name.  
The app is available from any mobile app store.

## WHAT'S NEEDED

Parents or guardians must provide the following documents:

- Proof of SAISD residency (utility bill, lease agreement)
- Photo ID of person registering the child
- Child's up-to-date immunization records

Students new to SAISD also will need the following documents:

- Recent academic records
- Birth certificate or proof of child's age
- Social Security card, if available

## AGE QUALIFICATIONS

On or before Sept. 1, a child must be:

- Age 3 or 4 for Head Start
- Age 4 for PK (3-year-olds accepted if space available)
- Age 5 for kindergarten
- Age 6 for 1st grade

## SAISD EXTENDED DAY PROGRAM

Extended Day learning opportunities for elementary and secondary students are available at approximately 70 campuses. Cost is on a sliding scale. The Extended Day information for the specific campuses is indicated in the school descriptions at the back of the enrollment guide.

### Office of Access and Enrollment Services

1931 E. Houston St.  
San Antonio, TX 78202

Web: [www.saisd.net/enroll](http://www.saisd.net/enroll)

Email: [enroll@saisd.net](mailto:enroll@saisd.net)

Phone: (210) 554-2660

Text: (210) 309-3259



# Beginning Your School Search

For more than 100 years, SAISD has provided a sound educational foundation for generations of students. The District provides a comprehensive instructional program and related services for students from pre-kindergarten through 12th grade, with a wide variety of extracurricular programs and academic offerings.

Along with traditional school models, the District also offers academies comprising non-traditional grade ranges such as PK-8. SAISD also has a number of specialized open-enrollment schools and magnet programs available to students across Bexar County.

Families are encouraged to research the schools in our District and select the one that best fits the needs of your child.

The Office of Access and Enrollment Services is here to assist you with your school search. Contact them with any questions via phone at **(210) 554-2660**, email at **enroll@saisd.net** or text at **(210) 309-3259**.

## Step 1: Consider your neighborhood school

Start with the schools right in your neighborhood. Neighborhood schools give students the traditional K-12 experience with well-rounded academic offerings, fine arts and athletic programs.

Find the schools that service your home address by using the School Locator tool on the District's website. This tool is found in the Find It Fast section of the home page under the Parent tab.

## Step 2: Consider a Choice School or Program

SAISD offers a number of specialized schools and programs that are open to students across Bexar County, with first priority given to students within the District.

## Step 3: Review this enrollment guide

This enrollment guide provides a comprehensive overview of all our campuses, including academic and extracurricular program offerings, location, contact information and enrollment criteria.

## Step 4: Schedule a campus visit

After reviewing the enrollment guide, schedule a visit to the campuses that captured your interest. Contact the school directly to schedule a tour, meet the principal and visit classrooms.

## Step 5: Prepare for enrollment

Once you have selected a campus for your child, follow the steps to enrollment located on the previous page.



# Choice Schools & Programs

SAISD recognizes that education is not a one size fits all package and offers more opportunities than any other Bexar County area school district for students to pursue special interests and career goals or to fit their individual learning styles.

SAISD's Choice Schools and Programs typically showcase a single-anchor model around which all teaching and learning happens. Offerings also include Magnet Programs for a fast-track to college and career, with the opportunity to earn up to 45 hours of college credit (college credits include both dual-credit and AP classes) by graduation.

Generally, lotteries are hosted for entry grades at Choice Schools and Programs. Typically, for elementary schools, entry grades are PK and kindergarten; middle school entry grade is 6th grade; high school entry grade is 9th grade. Lotteries are blind, randomized and conducted at the District level. Applications for non-lottery grades will be placed on a waitlist, and applicants will be accepted based on seat availability for that grade.

Enrollment in Choice Schools and Programs is open to students across Bexar County by application: [www.saisd.net/apply](http://www.saisd.net/apply)

## 2019-20 Application Window: Nov. 26, 2018-Feb. 8, 2019

Interested students must submit an application to be considered for admission into SAISD's Choice Schools or Magnet Programs. Applicants that submit an application after the closing of the window will be automatically added to the waitlist for that school.

## ELEMENTARY SCHOOLS

- **Briscoe Elementary\*** - (IB World School, Primary Years Programme) (PK-5) – Global Interdisciplinary Learning  
Page 58
- **Lamar Elementary\*** (PK-6) – Project-Based Learning, Social-Emotional Learning, Dual Language, Extended School Year  
Page 65
- **YWLA Primary** (K-1, expanding to K-5) – STEAM, Social-Emotional Learning, Single Gender  
Page 72

## ACADEMIES (non-traditional grade ranges)

- **Advanced Learning Academy** (PK-12) – Creative and Academic Challenges, Trinity University Lab School  
Page 40
- **Bonham Academy\*** (K-8) – Dual Language, Environmental Science and Fine Arts  
Page 41

## Offers Announced: Week of Feb. 18, 2019

Applicants that submitted an application prior to the deadline should expect to receive an email, text, and/or mail notification of their application status no later than Friday, Feb. 22, 2019.

## Deadline To Accept An Offer: March 8, 2019

Applicants that receive an offer for admission must accept their seat before the deadline in order to proceed to the registration process. If no action is taken, the seat will be forfeited and given to a student on the waitlist. Applicants in waitlist status should take no action at this time.

## Waitlist Offers Announced: March 22, 2019

Applicants notified of an offer from the waitlist typically have two days from the time of notification to accept their seat.

## Final Deadline To Accept Waitlist Offer: March 29, 2019

Applicants that receive an offer for admission from the waitlist must accept their seat before the deadline in order to proceed to the registration process. If no action is taken, the seat will be forfeited.

*\* Families residing within the attendance zone of the following schools do not need to apply: Bonham Academy, Briscoe Elementary, Harris Middle School, Hawthorne Academy, Lamar Elementary and Rhodes Middle School.*

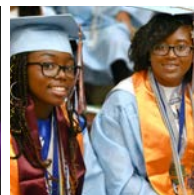
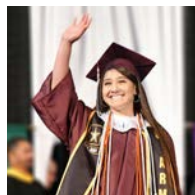
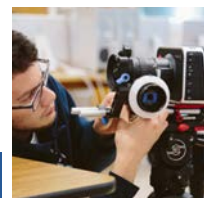
- **Hawthorne Academy\*** (K-8) – Visual Arts, Citizenship, Ethics • Page 46
- **Irving Dual Language Academy** (PK-3 & 6, expanding to PK-8)  
Campuswide Dual Language  
Page 47
- **Steele Montessori Academy** (PK-3, expanding to PK-6)  
Montessori • Page 51
- **Mark Twain Dual Language Academy** (PK-5, expanding to PK-8) – Campuswide Dual Language  
Page 51
- **Young Men's Leadership Academy** (4-10, expanding to 4-12)  
Character, Leadership and Discipline  
Page 52
- **Young Women's Leadership Academy** (6-12) – Math, Science, Technology and Leadership  
Page 53

## MIDDLE SCHOOLS

- **Harris Middle School** - (IB World School, Middle Years Programme) (6-8) International Baccalaureate  
Page 34
- **Rhodes Middle School\*** (6-8) – Media and Technology  
Page 36

## HIGH SCHOOLS

- **Brackenridge High School** (9-12) • Page 26  
**Early College High School** – Global Competence, Liberal Arts  
**Media & Film Magnet** – Media Production | Broadcast | Animation | Game Design | Graphic Design.  
Leads to a Business & Industry endorsement.
- **Burbank High School** (9-12) • Page 26  
**IB World School, Diploma and Middle Years Programmes** – International Baccalaureate Institute. Leads to an endorsement in either multidisciplinary or STEM.
- **CAST Med High School** (9, expanding to 9-12) • Page 27  
**CAST Schools Network** – Medicine, Public Health, Biomedical Research, UTSA Lab School
- **CAST Tech High School** (9-11, expanding to 9-12) • Page 27  
**CAST Schools Network** – Computer Science, Information Technology, User Experience, Business, UTSA Lab School
- **Edison High School** (9-12) • Page 28  
**Health Professions Magnet** – Leads to an endorsement in either Public Service or STEM.
- **Fox Tech High School** (9-12) • Page 28  
**Health Professions Magnet** – Leads to an endorsement in either Public Service or STEM.  
**Law Professions Magnet** – Leads to a Public Service endorsement.
- **Highlands High School** (9-12) • Page 29  
**Engineering Magnet** – Engineering | Networking | Computer Science. Leads to STEM endorsement.
- **Sam Houston High School** (9-12) • Page 29  
**Cyber P-TECH** – Cybersecurity School Within a School.  
Leads to a STEM endorsement.
- **Jefferson High School** (9-12) • Page 30  
**IB World School, Diploma and Middle Years Programmes**  
International Baccalaureate Institute. Leads to an endorsement in either multidisciplinary or STEM.
- **Lanier High School** (9-12) • Page 30  
**ACE Advanced Academy** – Construction | Engineering | Architecture. Leads to a Business & Industry endorsement.  
**Automotive Technology Magnet** – Leads to a Business & Industry endorsement.
- **Phoenix Middle College** (11-12) • Page 31  
**Middle College** – Skilled Trades in Demand Occupations.  
Located at St. Philip's College Southwest Campus.
- **St. Philip's Early College High School** (9-12) • Page 31  
**Early College High School** – Information Technology, Automotive Technology, Culinary Arts, Hotel Management, Hospitality Management
- **Travis Early College High School** (9-12) • Page 32  
**Early College High School** – Liberal Arts



Early learning helps young children develop mentally, socially and emotionally and prepares them to enter elementary school ready to learn. San Antonio ISD has offerings for children from ages 3 to 5.

## HEAD START - (210) 554-2410

A full-day of high-quality, federally funded Head Start program for qualifying 3 and 4 year olds is offered at various elementary schools, as well as early childhood education centers. Priority enrollment is given to children with disabilities, in foster care, in families who qualify under the McKinney Vento Homeless Education Assistance Act and/or receive TANF (Temporary Assistance for Needy Families) or SSI (Supplemental Security Income). The program is in partnership with the City of San Antonio's Department of Human Services.

To qualify for Head Start, the following three requirements must be met:

- The child must be 3 or 4 years old on or before Sept. 1.
- The family meets Head Start income guidelines.
- The family resides in the SAISD boundaries.

## PRE-KINDERGARTEN - (210) 554-2410

A full-day, high-quality pre-kindergarten curriculum is offered at most elementary schools and academies and is tuition free for all families. Priority enrollment, however, is given to eligible 4 year olds that meet TEA's pre-kindergarten qualifications:

- The child is eligible to take part in the national free/reduced-price school lunch program or receive Medicaid Free/Medicaid-Reduced benefits.
- The child is unable to speak and comprehend the English language.
- The child is homeless.
- The child is a dependent of an active duty member of the U.S. armed forces or member who was injured/killed while on duty.
- The child is or has been in foster care in the state of Texas.
- The child is a dependent of a person eligible for the Star of Texas Award.

PreK-4 students must be 4 years old on or before September 1 to be eligible. As space is available, eligible 3 year olds may also enroll. PreK-3 students must be 3 years old on or before September 1 to be eligible.



## KINDERGARTEN - (210) 554-2660

Kindergarten at SAISD builds a firm foundation for each child's future success. SAISD's state-certified teachers are dedicated to providing outstanding educational opportunities and resources for all of our students. To be eligible for kindergarten, children must be 5 years old on or before September 1.

### Curriculum Components

- Reading and writing
- Mathematics and science
- Social studies
- Special classes: art, music, physical education

### Keys to Success

- **Strong Academics** - Fundamentals are taught through hands-on activities that inspire curiosity and exploration inside and outside the classroom.
- **Social Development** - Skills important for lifelong success such as collaboration, communication, independence, and more are practiced daily in our kindergarten classrooms.
- **Nurturing Environment** – Skilled staff members provide various types of support for students.

- **Nutritious Breakfast and Lunch** – SAISD students receive their breakfast and lunch at no cost.
- **Parent Engagement** - Parents are invited to join in the fun during campus family nights, enriching class field trips and other celebrations throughout the school year. There are many ways for parents to get involved. (Contact individual campuses for more information.)

### Kinder Corner

SAISD showcases the unique ways kindergarteners learn, play and collaborate at different campuses throughout the District. Parents may keep up with the fun and learn more about kindergarten activities on the Kindergarten Roundup webpage at [www.saisd.net/kinderroundup](http://www.saisd.net/kinderroundup) and on the District's Facebook page at [www.facebook.com/SanAntonioISD](http://www.facebook.com/SanAntonioISD)



# Meeting Your Student's Needs

## BILINGUAL AND ESL PROGRAMS (210) 554-2590

### Dual Language Program

The SAISD Dual Language Program provides students with the opportunity to develop stronger cognitive and academic skills through a rigorous program delivered in Spanish and English that aligns to the District's standards and curriculum. Students excel in all content areas, develop high levels of academic bilingualism and biliteracy, and develop the strong sociocultural competence required to respect and appreciate all languages and cultures. The expectation is for all students graduating from the SAISD Dual Language Program to be bilingual, biliterate and multicultural; empowered with higher levels of academic confidence, self-esteem and intercultural understanding; and prepared with the 21st century skills necessary for success in higher education and the workforce.

### English as a Second Language

The English as a second language program serves students identified as English learners by providing sheltered instruction in an English-only mainstream instructional setting. The goal is for English learners to attain proficiency in the English language.

## CAREER AND TECHNICAL EDUCATION (CTE) PROGRAMS - (210) 554-2610

The Career and Technical Education program provides students with opportunities to gain valuable hands-on experience in diverse careers, including high-demand STEM areas, while also preparing them for college. Every traditional SAISD high school offers multiple career pathways. Students in these programs have the opportunity for real-world experiences through internships or job shadowing and industry certifications.

## GIFTED AND TALENTED - (210) 554-2555

The District is committed to providing services for students who have demonstrated complex thinking skills and a need for academic challenge. Universal screening is provided for all students in 1st and 5th grades, and students in any grade may also be referred by their teachers or parents. Based on results of an assessment process, a committee identifies and invites students to participate in services.

Classroom teachers are trained in understanding and meeting the needs of gifted learners and provide differentiation for students in the general classroom setting.

**Elementary school:** Students are placed in clusters with a teacher who is trained in meeting the needs of gifted learners. Instructional specialists provide pull-out enrichment instruction focused around a curriculum framework that includes student interest and independent research.

**Middle school:** Students are clustered in a Pre-AP English Language Arts and Reading classroom that uses Springboard curriculum and participate in an online community for gifted learners. Students may also be clustered into other Pre-AP courses according to their strengths. An instructional specialist leads quarterly student meetings focused on the social-emotional needs of gifted students, Duke TIP preparation and future goal setting.

**High school:** Students are enrolled in at least one advanced academic learning experience and participate in an online community for gifted learners. An instructional specialist leads quarterly student meetings focused on the social-emotional needs of gifted students and college and career readiness.

## HOMELESS AND FOSTER CARE SUPPORT SERVICES - (210) 554-2635

**Homeless support services:** The McKinney-Vento Education Assistance Act is a federal law that provides services to families and unaccompanied youth who live in a temporary situation due to loss of housing. Educational rights are parent-driven in the best interest of the child.

**Students in foster care:** Title 1 is part of the Every Student Succeeds Act, a federal law that provides services to families who care for children through foster or kinship care. Educational rights are parent-driven in the best interest of the child.

### Educational rights for students in homeless situations or in foster care:

- Identification of students
- Immediate enrollment
- Removal of barriers to school enrollment, including enrollment documentation
- School selection
- Transportation assistance (school bus or VIA Metropolitan Transit)
- Immediate eligibility for free child nutrition



## IMMIGRANT AND REFUGEE STUDENTS (210) 554-2592

The International Welcome Center serves immigrant students, English-language learners and their families, from kindergarten through high school.

Located at the Pickett Family Center, 1931 E. Houston St., staff members work with families new to the District whose child or children are newcomer immigrant students and/or are students who are speakers of a language other than English. In both instances, the students are within their first three years in U.S. schools (including transfer students).

Center staff assists students and their families in filling out any paperwork needed for registration, administers the oral language proficiency assessment (OLPT), provides information about the bilingual/ESL programs offered in SAISD, and shares information about an array of District and community resources, including health and food services, student uniform assistance and ESL education for adults.

## SCHOOL MEALS - (210) 554-2290

As part of SAISD's participation in the federal Child Nutrition program administered by the U.S. Department of Agriculture, all students receive breakfast and lunch at no cost, regardless of ability to pay. Supper and after-school snack also are available to students at no cost at sites participating in an after-school academic program.

All menu items and foods served to the students meet and/or exceed the guidelines set forth by the U.S. Department of Agriculture. Menu items and recipes are student selected and approved through various student events such as the Food Extravaganza and other student samplings. District recipes are developed in collaboration with the Culinary Institute of America (CIA) at San Antonio and input from SAISD's own culinary students.

Menus can be viewed by campus using the department's interactive website and app, which provides not only the menus, but also nutritional and allergen information. To access these, download the Nutrislice app or visit

[www.saisd.nutrislice.com](http://www.saisd.nutrislice.com)

## SOCIAL SERVICES - (210) 554-2635

Social workers provide social and emotional support to enhance the academic growth of all students. Social workers are a link between the home, school and community. School social workers promote personal success and enhance academic performance by removing social and emotional barriers.

- Family support services
- Crisis intervention
- Home visits
- Community agency information and referrals
- Collaboration with school staff, community agencies and organizations
- Advocacy for students and parents
- Parent conferences
- Individual and family counseling
- Other related services

## SPECIAL EDUCATION - (210) 554-2406

The District is committed to the success of every student and recognizes that because each student is unique, a one size fits all educational program is insufficient to meet the needs of all of our students. Some students will need different supports than others, and fulfilling this charge will necessitate a teamwork and all-in approach.

SAISD promotes inclusion and supports students with disabilities in gaining college and career readiness and independent living skills through a rigorous, nurturing learning environment, high-quality instruction, and support services that enable students to reach their full potential.



# Meeting Your Student's Needs - continued

## STUDENT HEALTH SERVICES - (210) 554-2435

Student Health Services implements programs and provides services designed to reduce health-related barriers to learning, promote each student's optimal level of wellness and empower students and their families with the knowledge and skills needed to achieve lifelong health and wellness. Programs focus on prevention, early identification, referral and case management of health issues having the potential to negatively impact school attendance and academic success.

### Immunization Requirements

Texas state law requires students attending school to be immunized against certain vaccine preventable diseases. Parents are encouraged to get children vaccinated before school starts. Students cannot go to school without the proper documentation for the required vaccines or a valid medical or conscientious exemption.

In addition to receiving the required immunizations at the doctor's office, families may also receive their children's immunizations, including for the flu, at the following low-cost or no-cost vaccine locations:

- CentroMed: (210) 922-7000
- Christus Pediatric Mobile Clinic: (210) 954-3764
- CommuniCare: (210) 233-7000
- University Health System: (210) 358-8255
- Metro Health: (210) 207-8894

## TRANSPORTATION - (210) 223-9792

The Transportation Department serves the students of SAISD by providing safe transportation between school and home for those who are eligible to ride the bus, according to the following guidelines:

- Students who attend schools within their attendance boundaries and who reside two or more miles from their assigned campuses are eligible for transportation at District designated stops.
- Students who attend a Magnet Program or Choice School are provided transportation to and from their neighborhood school.
- All students who participate in field trips or a range of extracurricular programs – from academics to athletics and music – are provided transportation to and from school-related activities.

## UNIFORM ASSISTANCE - (210) 554-2600

All District students must be attired in a uniform of black or khaki bottoms and a white top, or alternate school-approved colored shirt. For uniform assistance, call (210) 554-2600.



# STOPPING IS THE LAW ON BOTH SIDES OF THE ROAD

for more information visit:  
**[www.saisd.net/bussafety](http://www.saisd.net/bussafety)**



## SCHOOL UNIFORM GUIDELINES

Here's what you'll need to know to get your children  
"dressed for success" in time for back-to-school.

Students in all grades must wear uniforms. Items may be purchased  
at any store as long as items meet all dress code requirements.

## THE SAISD SCHOOL UNIFORM

### BOTTOMS

#### **KHAKI or BLACK:**

- trousers
- capri pants
- shorts
- skirts
- skorts
- and jumpers



Khaki pants, capri pants, shorts, skirts and jumpers must fit well and not be oversized or undersized. Pants and shorts must fit at the waist and must not sag. "Stone" or "white" khaki is not allowed.

Uniform pants must be straight-legged and pockets must be the standard front pockets. No "baggies" or loose-fit pants are permitted. Cargo pants (with pockets on the side of the leg), overalls, bell bottoms or wide-leg styles are not uniform pants and are not permitted.

Shorts, skirts and skorts must be no shorter than three inches above the knee. For enforcement purposes, pockets on shorts, skirts or skorts must also be standard front pockets; no "cargo"

styles are permitted. Also, to be considered shorts rather than pants, the length cannot extend below the knee.

No manufacturers' logos or brand names may be visible. If visible when purchased, they must be removed.

No visible drawstrings on pants, shorts or skorts.

All clothing must be hemmed. No cut-offs, side cuts or rolled-up cuffs. Cuffs must be tailored and tacked/sewn at the seams.

Shirts must fit well and not be oversized or undersized. Shirts must have collars, and may be polo-style or dress-style.

### TOPS

**WHITE** long- or short-sleeved  
blouses and shirts with collars.

Alternate collared shirts in  
approved school colors.



*Contact campus administrator for details.*

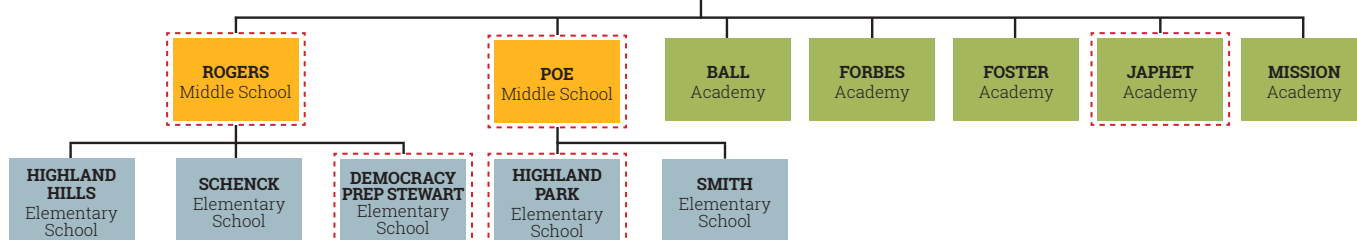
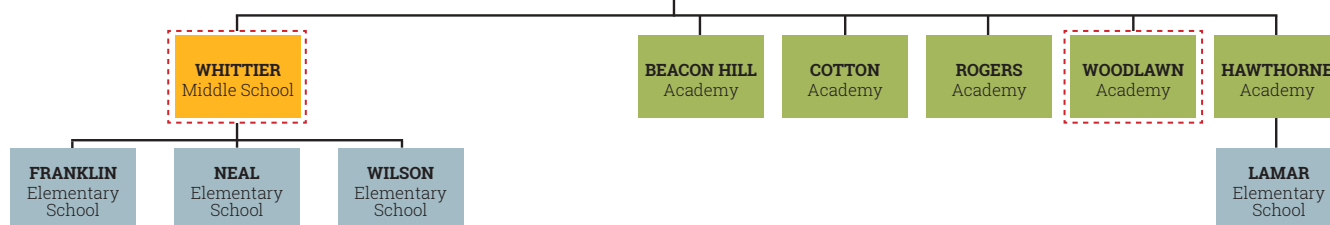
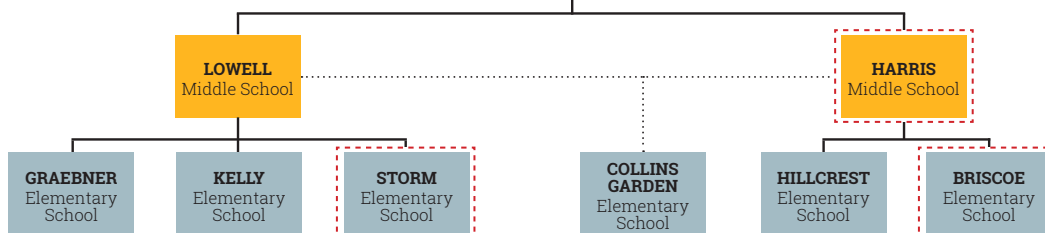
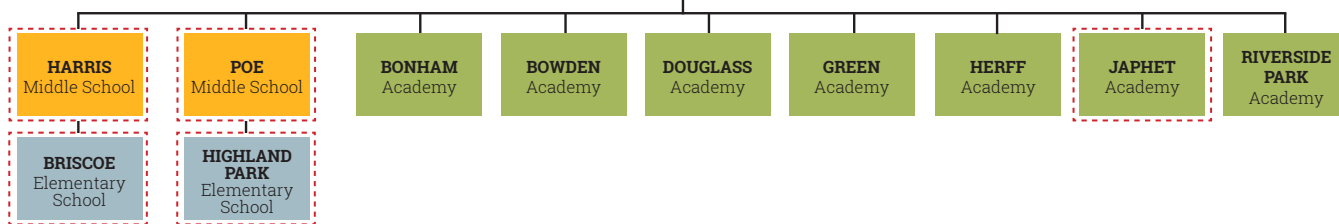
All shirts must be tucked in, except for those with a wide (approximately three-inch) band at the bottom that are meant to be worn out.

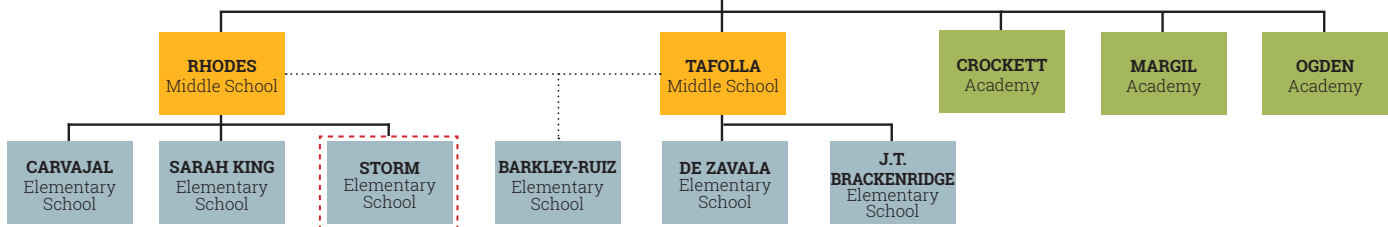
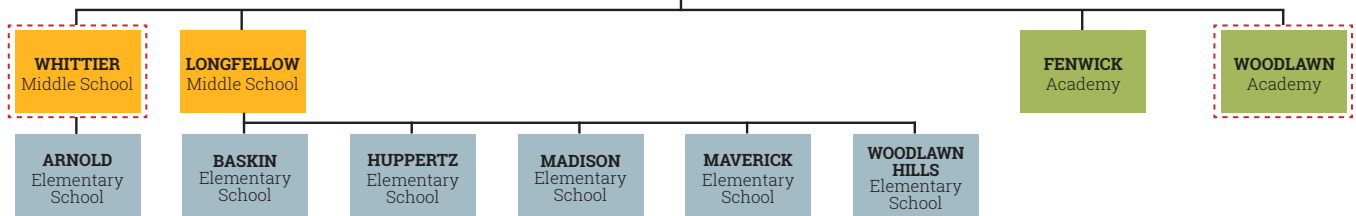
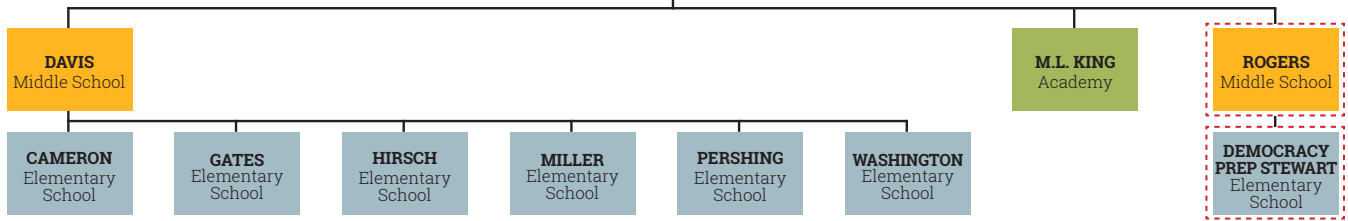
Students wearing uniforms and uniform components must also conform to all other dress code requirements as outlined in the SAISD Parent/Student Handbook.

San Antonio Independent School District does not discriminate on the basis of race, religion, color, national origin, sex, or disability in providing education services, activities, and programs, including vocational programs, in accordance with Title VI of the Civil Rights Act of 1964, as amended; Title IX of the Educational Amendments of 1972; section 504 of the Rehabilitation Act of 1973, as amended.

**QUESTIONS • 210.554.2600 • [www.saisd.net](http://www.saisd.net)**

# 2019-2020 Feeder Patterns





### COLOR CODES:



= **HIGH SCHOOLS** (grades 9-12)



= **MIDDLE SCHOOLS** (grades 6-8)  
Exception: Tafolla MS, 7-8



= **ACADEMIES** (grades PK-8)



= **ELEMENTARY SCHOOLS** (Head Start-5)  
Head Start and PK3 not available at all campuses



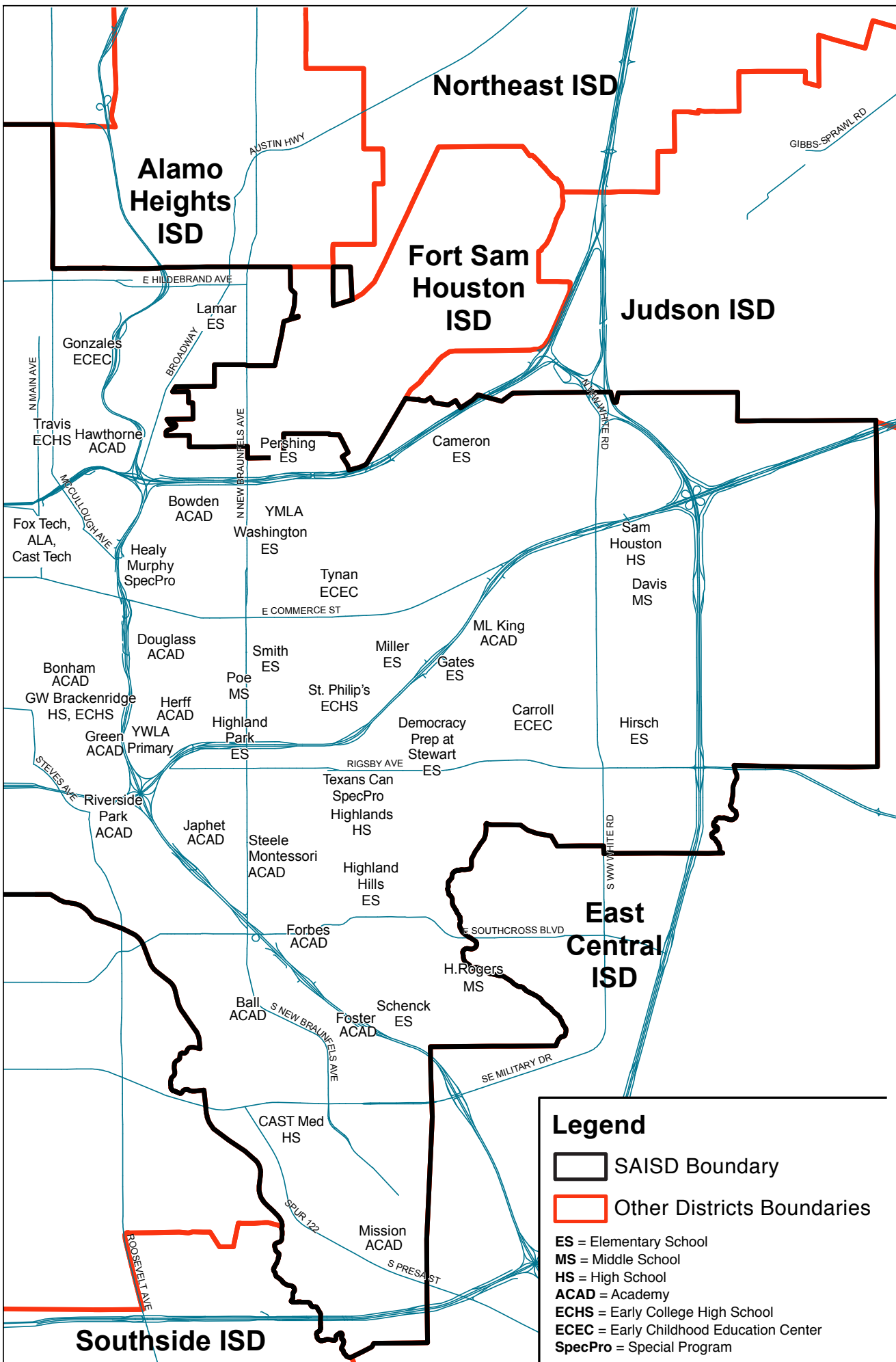
= **SPLIT FEEDER PATTERN** Feeds into more than one school.  
Use School Locator tool (see page 6) to determine school pattern.

### SCHOOLS OPEN TO ALL SAISD STUDENTS:

**Note:** Students who attend campuses with middle school grades and lower will follow the high school feeder pattern based on their residence, unless they choose to apply to an open-enrollment high school. All district Early Childhood Education Centers are open without boundaries.

- Advanced Learning Academy
- CAST Med High School
- CAST Tech High School
- Fox Tech High School
- Irving Dual Language Academy
- St. Philip's Early College High School
- Steele Montessori Academy
- Travis Early College High School
- Twain Dual Language Academy
- Young Men's Leadership Academy
- Young Women's Leadership Academy
- Young Women's Leadership Academy - Primary

[illegible]



*Preparing for your college and career success after high school*  
*All plans require a solid foundation*



## DISTINGUISHED LEVEL OF ACHIEVEMENT

Requires Algebra II, with an endorsement and the Foundation High School Program requirements (26 credits).

Students must graduate at the Distinguished Level of Achievement to be **eligible** for automatic admission to state colleges and universities through the Top 10 Percent rule.

FOUNDATION + ENDORSEMENT PLAN

STEM	Business & Industry	Public Services	Arts & Humanities	Multi-disciplinary
+ 1 advanced math + 1 advanced science + 2 additional elective credits				
26 CREDITS 	26 CREDITS	26 CREDITS	26 CREDITS	26 CREDITS

## FOUNDATION HIGH SCHOOL PROGRAM

**Core requirements (22 Credits):** 4 credits in English, 3 credits in math, 3 credits in science, 3 credits in social studies, 2 credits in foreign language, 1 credit in fine arts, 1 credit in PE, 5 elective credits

## CHOOSE ONE OR MORE ENDORSEMENTS



**STEM (Science, Technology, Engineering and Mathematics)** - This path includes courses directly related to science (including environmental science), technology (including computer science), engineering and advanced mathematics, or a coherent sequence of 4 career and technical courses.



**Business and Industry** - This path includes courses directly related to database management, information technology, communications, accounting, finance, marketing, graphic design, architecture, construction, welding, logistics, automotive technology, agricultural science and heating, ventilation and air conditioning.



**Public Service** - This path includes courses directly related to health sciences and occupations, education and training, law enforcement, culinary arts and hospitality.



**Arts and Humanities** - This path includes courses directly related to political science, world languages, cultural studies, English literature, history and fine arts.



**Multidisciplinary** - This path includes courses from the curriculum of each endorsement area and credits in a variety of advanced courses from multiple content areas sufficient to complete the distinguished level of achievement under the foundation high school program.

San Antonio Independent School District does not discriminate on the basis of race, religion, color, national origin, sex, or disability in providing education services, activities, and programs, including vocational programs, in accordance with Title VI of the Civil Rights Act of 1964, as amended; Title IX of the Educational Amendments of 1972; section 504 of the Rehabilitation Act of 1973, as amended.

## GLOSSARY OF TERMS

**Academies** - Schools with non-traditional grade configurations, such as PK-8, K-8, 6-12, PK-12 and more.

**AVID** - College-readiness system known as Advancement Via Individual Determination that accelerates student learning using research-based methods. Students gain organizational and note-taking skills to promote student achievement.

**CAST Schools** - The Centers for Applied Science & Technology (CAST) is a San Antonio-based network of career-themed high schools focused on experiential learning and industry mentorship.

**Choice Programs or Schools** - Schools or programs including in-district charters and magnet programs, which provide the opportunity for students to tap more deeply into their specific interests and aspirations. These schools are open to students across Bexar County and require an application.

**Distinction Designations** - Distinction designations are awarded annually to campuses by the Texas Education Agency based on achievement relative to a group of campuses of similar type, size, and student demographics. Awards may be given in the areas of Academic Achievement in English Language Arts/Reading, Mathematics, Science, or Social Studies, Top 25 Percent: Student Progress, Top 25 Percent: Closing Performance Gaps and Postsecondary Readiness.

**Dual Language** - An effective approach to develop language proficiency and literacy in English and Spanish. The program integrates native English speakers and native Spanish speakers for academic content instruction in both languages.

**Early Childhood Education Centers** - Full-day learning laboratories for 3- and 4-year-old children, which provide the Head Start program and/or the District's pre-kindergarten program.

**Early College High Schools** - Enables students to earn up to 60 hours of college credit, tuition free, with the opportunity to earn a high school diploma and an associate degree at the same time.

**International Baccalaureate** - IB programmes are recognized worldwide for their rigorous academic and personal standards and their focus on preparing students to be active, lifelong learners. SAISD has four IB World Schools and five IB-candidate schools.

**Magnet Programs or Schools** - Programs that focus on a variety of areas of interests, including career and college-readiness. Magnets are open to students across Bexar County. All SAISD traditional high schools and some middle schools have magnet programs. Fox Tech is a stand-alone magnet school.

**Neighborhood Schools** - A traditional school with well-rounded academic offerings, fine arts and athletic programs, as well as family and community engagement. Serves an attendance boundary.

**P-TECH** - Pathways in Technology Early College High School (P-TECH) is a new educational model approved by the Texas Legislature in 2017 that provides students the opportunity to earn a high school diploma, an industry-specific associate degree, certifications and work-based training around high-demand career fields.

### Special Education Acronyms:

**ACE** - Alternate Curriculum Environment

**BCM** - Behavior Coach Model

**BSC** - Behavior Support Classroom

**GEC** - General Education Connection

**PBIS** - Positive Behavioral Interventions and Support

**PPCD** - Preschool Program for Children with Disabilities

**RDSPD** - Regional Day School Program for the Deaf

## EXPLANATION OF ICONS



### Breakfast

Students receive breakfast at no cost.



### Lunch

Students receive lunch at no cost.



### Supper

Supper is available to students at no cost at participating sites.



### Magnet

Choice Program that focuses on an area of interest. Requires an application.



### Dual Language

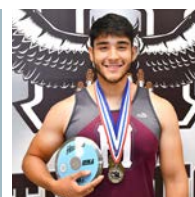
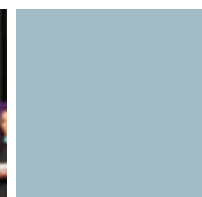
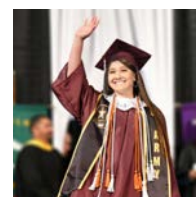
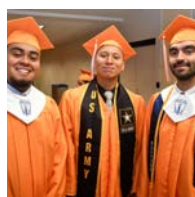
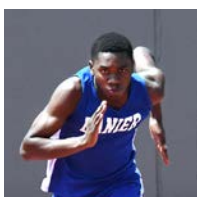
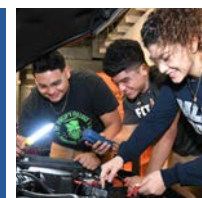
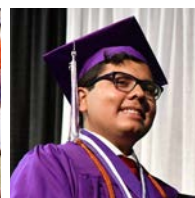
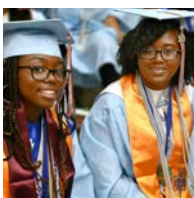
Program that focuses on dual language immersion. Some programs require an application.



# EXPERIENCE SAISD HIGH SCHOOLS

**Transitioning to High School** - Eighth graders have options as they consider where they will attend high school. They may attend traditional high schools in their neighborhoods, where they will enjoy a full range of team and individual sports as well as fine arts offerings and other extracurriculars. Students also have the option of applying to magnet programs within the many District high schools, or to specialized schools, such as early college high schools.

- Brackenridge High School
- Burbank High School
- CAST Med High School
- CAST Tech High School
- Edison High School
- Fox Tech High School
- Highlands High School
- Sam Houston High School
- Jefferson High School
- Lanier High School
- Phoenix Middle College
- St. Philip's Early College High School
- Travis Early College High School



Breakfast



Lunch



Supper



Magnet Programs



Dual Language



### 2018 State Accountability Met Standard

**Distinction Designations:**  
Reading, Math, Social Studies,  
Postsecondary Readiness

### School Start/End Times: 8:45 a.m. - 4:15 p.m.

Earliest Drop-off: 8:00 a.m.  
Latest Pick-up: 4:30 p.m.

### School Uniform Color: Purple

**Magnet Programs:** Media & Film,  
Early College High School  
Application required – see page 10.



## George W. Brackenridge High School • 9-12

400 Eagleland Dr., San Antonio, TX 78210 • (210) 228-1200 • [www.saisd.net/brackenridgehs](http://www.saisd.net/brackenridgehs)

At Brackenridge High School, recipient of four distinction designations from TEA, we believe that all students deserve a high-quality education in a positive learning environment that is rich in a 100 year tradition of excellence. We prepare students for college and real-world professional experiences. Students learn from highly-qualified, caring professionals and master teachers who are dedicated to helping students achieve their full potential. Our students explore careers in animation, printing, graphic design and audio-video production. Early College students work for an associate degree through St. Philip's College engaging in a high school and college experience all at once. Our Dual Language Academy provides students the opportunity to be Bi-literate, Bilingual, Bi-cultural - all at Brackenridge.

♦ **ACADEMIC OFFERINGS:** Animation, Audio & Video Production, Business Information Management, Cosmetology, Culinary Arts, Education and Training, Graphic Design & Illustration, Health Science, IT – Computer Science and Programming, IT – Computer/Network Technician, Law Enforcement, Marketing and Entrepreneurship, Printing & Imaging Technology • Advanced Placement (AP), AVID, Dual Credit, Gifted & Talented, Pre-AP, Early College High School - ECHS specialized school • Art, Band, Cheer, Choir, Dance, Mariachi, Music, Orchestra, Theatre, Dual Credit Music electives • Dual Language Academy Cohort • Special Education: ACE, BCM, PBIS, Co-teach model

♦ **EXTRACURRICULAR PROGRAMS:** Aquatics, Basketball, Cross Country, Football, Golf, Soccer, Tennis, Volleyball • JROTC • Student Council, NHS, Academic UIL, Academic Decathlon, Speech/Debate Team, Animation Club, Girl Scouts/GAMMA SIGMA, DECA, CyberPatriots, Drama Club, Spanish Club, Yearbook, Pep Squad, Chess Club, Class Officers, Explorers, SkillsUSA, HOSA

♦ **PARENT ORGANIZATION:** Booster Club

♦ **COMMUNITY PARTNERS:** Big Brothers Big Sisters, Cafe College, Alumni Association, San Antonio Education Partnership, St. Philip's College, Trinity Advisor



### 2018 State Accountability Met Standard

**Distinction Designations:**  
Reading, Math, Science

### School Start/End Times: 8:45 a.m. - 4:15 p.m.

Earliest Drop-off: 8 a.m.  
Latest Pick-up: 4:45 p.m.

### School Uniform Color: White, Black, Orange

**Magnet Program:**  
International Baccalaureate  
Application required – see page 10.



## Luther Burbank High School • 9-12

1002 Edwards St., San Antonio, TX 78204 • (210) 228-1210 • [www.saisd.net/burbankhs](http://www.saisd.net/burbankhs)

We believe in developing lifelong learners who are able to communicate their ideas in a knowledgeable and reflective way that encourages creativity, open-mindedness and principled behaviors in our global society. We provide students with this unique environment through our campus pathways and magnet preparatory program, International Baccalaureate (IB). As an IB World School for the Diploma Programme and Middle Years Programme, students have the opportunity to earn a minimum 24 hours of college credit to any publicly funded university or college in the state of Texas. Students may also earn college credit through a variety of AP and dual credit offerings. Our industry certifications and licenses, as well as our internships, provide an opportunity for our students to network and be work ready upon graduation.

♦ **ACADEMIC OFFERINGS:** International Baccalaureate (IB) • Agriculture Mechanics, Cosmetology, Culinary Arts, Health Science, Horticulture Science, Law Enforcement, Veterinary Science, Business Information Management - IT • Advanced Placement (AP), Dual Credit, Pre-IB, AVID, Gifted and Talented, Pre-AP, World Languages • Art, Band, Choir, Mariachi, Orchestra, Theatre • ESL • Special Education: ACE, PBIS, BCM

♦ **EXTRACURRICULAR PROGRAMS:** Aquatics, Basketball, Cross Country, Football, Golf, Wrestling, Soccer, Tennis, Volleyball, Softball, Baseball, Cheer, Dance • JROTC • Chess Club, Best Buddies, Interact Club, NHS, International Mindedness, Art Club, Society of Christian Athletes, Gamma Sigma

♦ **PARENT ORGANIZATION:** Booster Club

♦ **COMMUNITY PARTNERS:** San Antonio Education Partnership, Upward Bound, Trinity Advertising, Café College, Palo Alto, Project Stay





## 2018 State Accountability N/A

**School Start/End Times:**  
8:30 a.m. - 4:20 p.m.  
Earliest Drop-off: 8 a.m.  
Latest Pick-up: 5:40 p.m.

**School Uniform Color:**  
Blue, White, Gray,  
any College T-shirt or  
CAST Tech Spirit Shirt

**Choice Program Specialization:** Medicine,  
Public Health, Biomedical Research  
Application required – see page 10.



## CAST Med High School • 9 (expanding to 9-12)

2601 Louis Bauer Dr, San Antonio, TX 78235 • (210) 228-3380 • [www.saisd.net/castmed](http://www.saisd.net/castmed)

Still in development, CAST Med High School will add to the pipeline of much-needed doctors, nurses, pharmacists, dentists, and researchers in the San Antonio area. CAST Med builds on San Antonio's unique strengths and current educational gaps with an emphasis on medicine and biomedical research. UT Health, with its research expertise and growing focus on population health and health disparities, is a key partner helping design a path for students wishing to improve the health of our community. CAST Med will incorporate a three-way educational partnership between UT Health, the University of Texas at San Antonio, and San Antonio ISD.

♦ **ACADEMIC OFFERINGS:** Advanced Placement (AP), AVID, Dual Credit, Gifted & Talented, Pre-AP, World Languages • Health Science • Special Education: PBIS

♦ **EXTRACURRICULAR ACTIVITIES:** Lacrosse Team Sport • Math, Science, Spanish, Chess, Student Government, Gardening, National Honor Society, Drama, Reading/Book Club

♦ **EXTENDED DAY PARTNER:** After school tutorials, Monday - Thursdays

♦ **PARENT ORGANIZATION:** PTA

♦ **COMMUNITY PARTNERS:** The University of Texas at San Antonio, UT Health San Antonio, Alamo Colleges, Bexar County Medical Society, Brooks, Children's Hospital of San Antonio, CHRISTUS Health, Mission Trail Baptist Hospital, University Health System



## 2018 State Accountability Met Standard Distinction Designation: Reading

**School Start/End Times:**  
8:30 a.m. - 4:00 p.m.  
Earliest Drop-off: 7:45 a.m.  
Latest Pick-up: 4:30 p.m.

**School Uniform Color:**  
White, Black, Gray, Orange,  
any College T-shirt or  
CAST Tech Spirit Shirt

**Choice Program Specialization:**  
Computer Science, Information Technology,  
User Experience, Business  
Application required – see page 10.



## CAST Tech High School • 9-11 (expanding to 9-12)

637 N. Main Ave., San Antonio, TX 78205 • (210) 554-2700 • [www.saisd.net/casttech](http://www.saisd.net/casttech)

At CAST Tech High School, we believe all students are capable of high levels of academic achievement. The curriculum at CAST Tech embeds business and technology across the contents with specialized course pathways in business, technology and user experience (UX). The faculty creates real-world context during the learning process through project-based learning units. Students interact regularly with industry partners to promote relevance to learning via mentoring, job shadowing and internships. Every student has the opportunity to take AP and dual-credit courses, as well as earn industry-based certifications in the areas of technology and/or business.

♦ **ACADEMIC OFFERINGS:** Business Information Management, Graphic Design & Illustration, IT – Computer Science and Programming, IT – Computer/Network Technician, Marketing and Entrepreneurship • Advanced Placement (AP), AVID, Dual Credit, Gifted & Talented, Pre-AP, World Languages • Band, Choir, Mariachi, Music, Theatre • Special Education: PBIS

♦ **EXTRACURRICULAR PROGRAMS:** Aquatics, Basketball, Cross Country, Golf, Tennis, Volleyball, Dance • Yearbook Committee, Student Council, Crochet Club, Makerspace, Cyberpatriots, Diversity Club, Sports Club, E-Gaming Club, MUNSA, Outdoor Adventure Club, Unity Club, National Honor Society

♦ **PARENT ORGANIZATION:** PTSA

♦ **COMMUNITY PARTNERS:** Communities in Schools, Girls Inc., She Code Connect, Say Si, SAPL, Summer of Service (SOS), AT&T, City of San Antonio, Frost Bank, Geekdom, HEB, Jungle Disk, Rackspace, Tech Bloc, University Health System, The University of Texas at San Antonio, USAA, Whataburger



Breakfast



Lunch



Supper



Magnet Programs



Dual Language



### 2018 State Accountability Met Standard

**Distinction Designations:** Social Studies, Postsecondary Readiness

### School Start/End Times: 8:45 a.m. - 4:15 p.m.

Earliest Drop-off: 7:30 a.m.

Latest Pick-up: 5:30 p.m.

### School Uniform Color:

White, Black, College Shirts

**Magnet Program:** Health Professions  
Application required – see page 10.



## Thomas Edison High School • 9-12

701 Santa Monica Drive, San Antonio, TX 78212 • (210) 738-9720 • [www.saisd.net/edisonhs](http://www.saisd.net/edisonhs)

At Edison High School, we believe that every student is capable of achieving at high levels, and we provide rigor across a variety of programs to ensure that students are being challenged in their area of interest. We provide a unique learning opportunity for students through our endorsements of business & industry, public service (law, fire, teaching), STEM, health professions, and multi-disciplinary studies. These endorsements are organized into three smaller learning communities that have their own administrator, counselor, and team of teachers. In our Health Professions Magnet Program, students can choose between a certification as a dental assistant, pharmacy technician, emergency medical technician, or certified nursing assistant.

♦ **ACADEMIC OFFERINGS:** Culinary Arts, Education and Training, Firefighter, Health Science, Law Enforcement, Marketing and Entrepreneurship • Advanced Placement (AP), AVID, Dual Credit, Gifted & Talented, Pre-AP • Art, Band, Choir, Mariachi, Theatre • Special Education: ACE, PBIS

♦ **EXTRACURRICULAR PROGRAMS:** Aquatics, Basketball, Cross Country, Football, Golf, Soccer, Tennis, Volleyball, Cheer, Dance • JROTC • Academic UIL/Decathlon, Drama Club, Dance, Cheer, Robotics, Engineering Club, NHS, Math Club, Environmental Club, Student Council, Police Explorers, Gamma Sigma Girls

♦ **PARENT ORGANIZATION:** Booster Club

♦ **COMMUNITY PARTNERS:** Big Brothers Big Sisters



### 2018 State Accountability Met Standard

**Distinction Designations:**  
Reading, Math, Science,  
Social Studies, Closing Performance  
Gaps, Postsecondary Readiness

### School Start/End Times: 8:30 a.m. - 4:00 p.m.

Earliest Drop-off: 7:30 a.m.

Latest Pick-up: 4:30 p.m.

Latest Pick-up  
(Extended Day): 6:00 p.m.

### School Uniform Color:

Black, Red

**Magnet Programs:**  
Health and Law Professions  
Application required – see page 10.



## Louis W. Fox Tech High School • 9-12

637 N. Main Ave., San Antonio, TX 78205 • (210) 738-9730 • [www.saisd.net/foxtexhhs](http://www.saisd.net/foxtexhhs)

At Fox Tech, a stand-alone magnet school, we believe that all students can meet their full potential. We commit to fostering a campus-wide culture based on positive relationships for stakeholders and provide rigorous instruction through innovative teaching practices. Students who are interested in pursuing careers in health and law professions receive focused instruction, clinical rotations at partnering hospitals, mentorship opportunities with practitioners, hands-on experience, field observations, project-based learning and certifications in nursing and/or medical assistant. We also offer a multitude of AP, dual credit/dual enrollment courses via The University of Texas at San Antonio, San Antonio College, and UT Austin OnRamps to accelerate college readiness. Our school educates all students, providing ESL support, special education, gifted & talented, and 504 services to eligible students.

♦ **ACADEMIC OFFERINGS:** Health Science, Law • Advanced Placement (AP), AVID, Dual Credit, Gifted & Talented, Pre-AP • Art, Band, Mariachi • English as a Second Language • Special Education: PBIS

♦ **EXTRACURRICULAR PROGRAMS:** Aquatics, Basketball, Cross Country, Track and Field, Golf, Tennis, Volleyball, Archery, Water Polo, Cheer, Dance/Pom Squad • Debate, Student Council, Yearbook, National Honor Society, UIL Academics, Debate Team, HOSA, Political Thinkers, Gamma Sigma, National Honor Society, Student Council, Academic Decathlon/Octathlon, Mock Trial Team, Art Club

♦ **PARENT ORGANIZATION:** PTA

♦ **COMMUNITY PARTNERS:** Goodwill, YMCA





### 2018 State Accountability Met Standard

#### School Start/End Times: 8:40 a.m. - 4:15 p.m.

Earliest Drop-off: 8:00 a.m.  
Latest Pick-up: 4:30 p.m.

#### School Uniform Color: White, Gray, Maroon

**Magnet Programs:**  
Engineering and Technology  
Application required – see page 10.



## Highlands High School • 9-12

3118 Elgin Ave., San Antonio, TX 78210 • (210) 438-6800 • [www.saisd.net/highlandshs](http://www.saisd.net/highlandshs)

When students walk through the doors of Highlands High School, they enter a community that blends 60 years of tradition and pride with a new \$65 million facility. We offer more than 30 extracurricular activities for student involvement. Our Engineering Institute aims to inspire and prepare scholars in engineering and computer science with enhanced curriculum, extracurricular opportunities and professional certifications. Through partnerships, Highlands provides students with professional mentors and activities that align with real-world career skills, such as the Frost Bank Financial Youth Academy and the Architecture, Construction, and Engineering (ACE) Mentor Program. The Mighty Owls invite you to become part of our legacy.

♦ **ACADEMIC OFFERINGS:** Agriculture Mechanics, Architecture Design, Business Information Management, Culinary Arts, Education and Training, Engineering Design, Health Science, Horticulture Science, IT – Computer Science and Programming, IT – Computer/Network Technician, Law Enforcement, Marketing and Entrepreneurship • Advanced Placement (AP), AVID, Dual Credit, Gifted & Talented, Pre-AP, OnRamps Dual Enrollment with UT Austin • Art, Band, Choir, Mariachi, Music, Orchestra, Theatre, Tech Theatre • Special Education: ACE, PBIS

♦ **EXTRACURRICULAR PROGRAMS:** Aquatics, Basketball, Cross Country, Football, Golf, Soccer, Tennis, Volleyball, Softball, Baseball, Wrestling, Track, Cheer, Dance • JROTC • Academic Decathlon, ACE Architecture, Construction, & Engineering Mentor Program, Art Club, Book Club, Brigade Dance Team, Business Professionals of American and School Store, Chess Club, Class Leadership & Student Council, Cyber Patriot, DECA, FFA Future Farmers of America, Gamma Sigma (Girl Scouts), Go Green Environmental Club, Language Club, Mu Alpha Theta Math Honors Club, National Honor Society, FIRST Robotics Club, Yearbook, TAFE Texas Association of Future Educators

♦ **PARENT ORGANIZATION:** PTA

♦ **COMMUNITY PARTNERS:** Communities in Schools, Upward Bound Math and Science Program, Project Stay, UT Outreach San Antonio, TEALS Computer Science Mentors



### 2018 State Accountability Met Standard Distinction Designation: Reading

#### School Start/End Times: 8:45 a.m. - 4:15 p.m.

Earliest Drop-off: 7:30 a.m.  
Latest Pick-up: 4:30 p.m.

#### School Uniform Color: White, Black, Green, Orange

**Choice Program Specialization:**  
Cyber P-TECH USA  
Application required – see page 10.



## Sam Houston High School • 9-12

4635 E. Houston St., San Antonio, TX 78220 • (210) 978-7900 • [www.saisd.net/samhoustonhs](http://www.saisd.net/samhoustonhs)

We at Sam Houston High School believe and are committed to building positive relationships, implementing high-quality education, and encompassing our students with committed and caring adults to ensure success upon graduation. All of our students are equipped to succeed personally and professionally to become contributing members of society. We will strive to create an atmosphere of independent learning that involves students taking ownership of their learning and teachers creating the spaces for collaboration, creativity, and authentic learning.

♦ **ACADEMIC OFFERINGS:** Audio & Video Production, Business Information Management, Construction Technology, Cosmetology, Culinary Arts, Engineering Design, Health Science, IT – Computer/Network Technician, Law Enforcement • Advanced Placement (AP), AVID, Dual Credit, Gifted & Talented, Pre-AP, World Languages, American Sign Language • Art, Band, Choir, Music, Theatre • Special Education: ACE • Pathways in Early College High School (P-TECH) with focus on Cybersecurity

♦ **EXTRACURRICULAR PROGRAMS:** Basketball, Cross Country, Football, Golf, Soccer, Tennis, Volleyball, Cheer, Dance • JROTC • Chess, Youth in Government, Academic Decathlon

♦ **EXTENDED DAY PARTNER:** 21st Century

♦ **PARENT ORGANIZATION:** PTO

♦ **COMMUNITY PARTNERS:** Accenture Federal Services, DC Industries, MIMS Institute Fellows, Tech Skills on Wheels, Omega Psi Phi, CIS, City Year, Big Brothers Big Sisters, St. Philip's College



Breakfast



Lunch



Supper



Magnet Programs



Dual Language



### 2018 State Accountability Met Standard

**Distinction Designations:**  
Reading, Math, Science

### School Start/End Times: 8:45 a.m. - 4:15 p.m.

Earliest Drop-off: 6:30 a.m.

Latest Pick-up: 6:30 p.m.

Latest Pick-up

(Extended Day): 6:00 p.m.

### School Uniform Color: White, Red, Royal Blue

**Magnet program:** International Baccalaureate  
Application required – see page 10.



## Thomas Jefferson High School • 9-12

723 Donaldson Ave., San Antonio, TX 78201 • (210) 438-6570 • [www.saisd.net/jeffersonhs](http://www.saisd.net/jeffersonhs)

Thomas Jefferson High School has become one of the newest members of an ever growing global community of 5,027 schools offering the International Baccalaureate in 147 different countries. Jefferson has chosen to join this growing international community as IB has a positive impact on students, schools and their wider communities with learning going well beyond the classroom. Its unique and innovative approach to learning means both students and teachers are genuinely engaged with the programs and benefit from being a part of an unparalleled global network. Students are able to participate in international conferences and educators work with their peers internationally to ensure that the IB remains at the cutting edge of international education.

♦ **ACADEMIC OFFERINGS:** International Baccalaureate (IB) • Animation, Architecture Design, Audio & Video Production, Graphic Design & Illustration, Health Science, Horticulture Science, Law Enforcement • Advanced Placement (AP), AVID, Dual Credit, Gifted & Talented, Pre-AP, World Languages • Art, Band, Choir, Mariachi, Music, Orchestra, Theatre • Special Education: ACE, BCM, BSC, PBIS

♦ **EXTRACURRICULAR PROGRAMS:** Aquatics, Basketball, Cross Country, Football, Golf, Soccer, Tennis, Volleyball, Track, Cheer, Dance • JROTC • PALs, Photography Club, Art Club, Chess Club, Gamma Sigma Girls, Hayne Society, MJRs, Mustang Cinema Club

♦ **PARENT ORGANIZATION:** Booster Club

♦ **COMMUNITY PARTNERS:** Big Brothers Big Sisters, Communities in Schools



### 2018 State Accountability Met Standard

### School Start/End Times: 8:45 a.m. - 4:15 p.m.

Earliest Drop-off: 8:15 a.m.

Latest Pick-up: 4:30 p.m.

### School Uniform Color: White, Black, Gray, Blue

**Magnet Programs:** Automotive Technology, ACE Advanced Academy  
Application required – see page 10.



## Sidney Lanier High School • 9-12

1514 W. César E. Chávez, San Antonio, TX 78207 • (210) 978-7910 • [www.saisd.net/lanierhs](http://www.saisd.net/lanierhs)

At Sidney Lanier High School, we believe in high expectations with strong student supports, a climate of respect and caring, learning that is rigorous, relevant, and engaging, and a safe and orderly learning environment with appropriate interventions that meet students' needs. Our partnership with The University of Texas at San Antonio and the ACE Advanced Academy provides a unique opportunity for students to immerse themselves in advanced coursework, college courses, summer camps, and internship experiences. Additionally, students can explore career options through a number of designated pathways.

♦ **ACADEMIC OFFERINGS:** Architecture Design, Automotive Technology, Business Information Management, Construction Management, Construction Technology, Cosmetology, Culinary Arts, Education & Training, Engineering Design, Health Science, IT – Computer Science and Programming, IT – Computer/Network Technician, Law Enforcement, Marketing & Entrepreneurship, Printing & Imaging Technology • Advanced Placement (AP), Pre-AP, AVID, Dual Credit, Gifted & Talented, World Languages • Art, Band, Choir, Mariachi, Music, Orchestra, Theatre • ESOL • Special Education: ACE

♦ **EXTRACURRICULAR PROGRAMS:** Aquatics, Basketball, Cross Country, Football, Golf, Soccer, Tennis, Volleyball, Softball, Track, Cheer, Dance • JROTC • Academic Decathlon, Academic UIL, ACE Mentor Program, Art Club, Digital Production, Yearbook, Gamma Sigma, Lacrosse Club, National Honor Society, National Spanish Honor Society, National Technical Honor Society, Peer Court, Police Explorers, Public Forum and Debate, SkillsUSA, Student Council, Theatre Production

♦ **PARENT ORGANIZATION:** PTSA, Athletic and Band Boosters, JROTC Boosters, Blue Jacket Boosters

♦ **COMMUNITY PARTNERS:** Communities in Schools, Ernst & Young College Map, The University of Texas at Austin Outreach, St. Mary's Law School, City Year, UTSA College of Architecture, Construction and Planning, Girl Scouts of America, Children's Bereavement Center, Culinary Institute of America





### 2018 State Accountability

Students accountability is linked to Cooper Academy at Navarro

### School Start/End Times:

**8:30 a.m. - 4 p.m.**

Earliest Drop-off: 8 a.m.

Latest Pick-up: 4:30 p.m.

### School Uniform Color:

No uniform

### Choice Program Specialization:

Skilled in demand occupations

Application required – see page 10.



### 2018 State Accountability Met Standard

### School Start/End Times:

**9:00 a.m. - 4:30 p.m.**

Earliest Drop-off: 7:30 a.m.

Latest Pick-up: 5:00 p.m.

Latest Pick-up

(Extended Day): 6:00 p.m.

### School Uniform Color:

White, Blue, Orange, Light blue

### Choice Program Specialization:

Early College High School

Application required – see page 10.



## Phoenix Middle College • 11-12

St. Philip's College Southwest Campus • 800 Quintana Road, San Antonio, TX 78211  
(210) 486-7132 | [www.saisd.net/phoenixmiddlecollege](http://www.saisd.net/phoenixmiddlecollege)

Phoenix Middle College provides high school students with the opportunity to earn college credit and work toward an industry certification - free of cost to the students and their families - during their last two years of high school. Juniors and seniors in this program take high school and college courses at Alamo College's St. Philip's College Southwest Campus, where they spend the full school day. The program aims to give students a jump-start on college and a high-paying, in-demand career. Phoenix Middle College includes core high school classes and college courses, Spanish and Edgenuity, and a standards-aligned video-based curriculum for secondary blended-learning environments.

♦ **ACADEMIC OFFERINGS:** Welding, manufacturing, plumbing, electrical, aviation technology, diesel technology, auto collision repair, alternative energy, automotive technology, HVAC technology, information technology, cybersecurity and travel/tourism.

♦ **EXTRACURRICULAR PROGRAMS:** Offered through students' home school

## St. Philip's Early College High School • 9-12

1801 MLK Drive, San Antonio, TX 78203 • (210) 486-2406 • [www.saisd.net/stphilipsechs](http://www.saisd.net/stphilipsechs)

St. Philip's College Early College High School's nationally ranked program offers the student who is at-risk or under-represented in college, the chance to earn the Associate of Arts or Associate of Applied Science degrees for free. Students begin to take college classes during their freshmen year and transition to full-time college students their junior year. As a support to our students, we provide a high school counselor, college bound advisor, and a college liaison. Being situated on a college campus offers our students a true "college-going experience" with computer labs, college bookstore, library, study centers, and a student center with billiard tables, gaming consoles, coffee shop, and a six-lane bowling alley.

♦ **ACADEMIC OFFERINGS:** Automotive Technician, Culinary Arts, IT – Computer/Network Technician, Nursing (CNA and LVN Certification) • Dual Credit, Pre-AP, Internships in Automotive, Cybersecurity, Culinary and Allied Health Fields • All of our fine arts offerings are through St. Philip's College. Students may participate in the college plays and choir.

♦ **EXTRACURRICULAR PROGRAMS:** Volleyball, basketball and cheerleading are offered through St. Philip's or students may return to their home SAISD campus • Students may join any club or organization at St. Philip's. In addition, we offer a variety of high school clubs based on interests of students and faculty. Clubs recently offered include yearbook, National Honor Society, student government, billiards, gaming, weight-lifting, and media. St. Philip's ECHS students may return to what would have been their SAISD high school to participate in sports or fine arts at the end of the day.

♦ **PARENT ORGANIZATION:** PTO

♦ **COMMUNITY PARTNERS:** Holy Redeemer Church, Jason Deli, Subway, Office Depot, St. Philip's College



Breakfast



Lunch



Supper



Magnet Programs



Dual Language



## William B. Travis Early College High School • 9-12

1915 N. Main Ave., San Antonio, TX 78212 • (210) 738-9830 | [www.saisd.net/travisechs](http://www.saisd.net/travisechs)

### 2018 State Accountability Met Standard

#### Distinction Designations:

Reading, Math, Closing  
Performance Gaps,  
Postsecondary Readiness

#### School Start/End Times:

8:00 a.m. - 3:30 p.m.

Earliest Drop-off: 7:15 a.m.

Latest Pick-up: 5:00 p.m.

#### School Uniform Color:

White, Navy Blue

#### Choice Program Specialization:

Early College High School

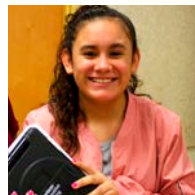
Application required – see page 10.

Travis Early College High School has been nationally recognized as a silver medalist in “Best High School” rankings by U.S. News, listed as a “Beating the Odds” campus that “[does] an excellent job of preparing students for college” (Newsweek), and granted the 2017 National Blue Ribbon Award for academic excellence. We provide traditionally underserved students the opportunity to learn in an academically rigorous environment that provides the social and academic support to excel. At Travis, students may attain their high school diploma while earning an associate degree and/or up to 60 college hours at no cost to students’ families. Students receive valuable exposure to college life, create a seamless transition from high school to post-secondary education, and get a strong support network that includes tutors and college planning advisors.

♦ **ACADEMIC OFFERINGS:** Advanced Placement (AP), AVID, Dual Credit, Pre-AP, World Languages • Art, Theatre, Acting at San Antonio College

♦ **EXTRACURRICULAR PROGRAMS:** SAISD students may participate in all sports at their home campus. San Antonio College offers students Men’s/Women’s Basketball, Soccer, Women’s Volleyball and Boxing • Academic Decathlon/Octathlon, Robotics, Gamma Sigma Girls, One Up, Model United Nations, National Honor Society, National Hispanic Honor Society, Yearbook, Art Club, Environmental Science Club, Society of Hispanic Professional Engineers, Mu Alpha Theta (Math Club), Phi Beta Kappa

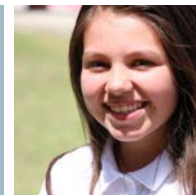
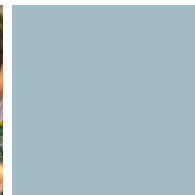
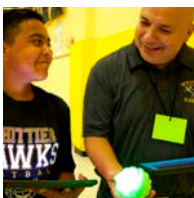
♦ **COMMUNITY PARTNERS:** San Antonio College (ACCD)



# EXPERIENCE SAISD MIDDLE SCHOOLS

**Transitioning to Middle School Grades** - Fifth graders have options as they consider where they will experience their middle school years. For grades 6-8, SAISD has both traditional middle schools and PK/K-8 academies. Traditional middle schools offer students the broadest range of athletics, fine arts and extracurricular activities. Academies offer students continuity of campus teachers and staff, as well as the Academy Sports League, fine arts programs and a variety of clubs.

- Davis Middle School
- Harris Middle School
- Longfellow Middle School
- Lowell Middle School
- Poe Middle School
- Rhodes Middle School
- Rogers Middle School
- Tafolla Middle School
- Whittier Middle School



Breakfast



Lunch



Supper



Magnet Programs



Dual Language



**6-8**

**2018 State Accountability Improvement Required**

**School Start/End Times:**  
**8:30 a.m. - 4:15 p.m.**

Earliest Drop-off: 8:00 a.m.

Latest Pick-up: 4:45 p.m.

Latest Pick-up

(Extended Day): 4:45 p.m.

**School Uniform Color:**

White, Black, Red



**6-8**

**2018 State Accountability Met Standard**

**School Start/End Times:**  
**8:45 a.m. - 4 p.m.**

Earliest Drop-off: 7:45 a.m.

Latest Pick-up: 4:15 p.m.

Latest Pick-up

(Extended Day): 6 p.m.

**School Uniform Color:**

White, Black, Maroon

**Choice Program Specialization:**  
International Baccalaureate  
Application required – see page 10.



## Stonewall Jackson Davis Middle School

4702 E. Houston St., San Antonio, TX 78220 • (210) 978-7920 | [www.saisd.net/davisms](http://www.saisd.net/davisms)

The S.J. Davis Middle School community is looking forward to an amazing school year of academic and personal growth, challenges and accomplishments. Our staff of over 70 teachers, paraprofessionals, custodians, food service workers, and administrative professionals are all working with students and parents to achieve high academic and social standards while developing personal and community responsibility. We will make each day a positive experience at S.J. Davis through rigorous instruction that meets the needs of every student. Personal, academic and social growth during the middle school years will prepare our students for high school and beyond. Our learning approach is to provide a balanced instructional program of data-driven instruction, STEM and Project Based Learning with academic integrity. Our vision at Davis is to innovate, elevate and empower students and the community.

♦ **ACADEMIC OFFERINGS:** IT – Computer Science and Programming, Career Investigation, Tech Apps • Gifted & Talented, Middle School Partners, Pre-AP, STEM • Art, Band, Cheer, Choir, Theatre • ESL • Special Education: BAC, LifeStrides, Soul Unit, Master Teacher After School Academy

♦ **EXTRACURRICULAR ACTIVITIES:** Basketball, Cross Country, Football, Golf, Soccer, Tennis, Volleyball, Track, Pep Squad • LOTC • UIL, National Junior Honor Society, Student Council, Science Technology Engineering & Math (STEM)

♦ **EXTENDED DAY PARTNER:** Boys & Girls Club of San Antonio, City Year

♦ **COMMUNITY PARTNERS:** Big Brothers Big Sisters, Communities in Schools, City Year

## Joel Chandler Harris Middle School

325 Pruitt Ave., San Antonio, TX 78204 • (210) 228-1220 | [www.saisd.net/harrisms](http://www.saisd.net/harrisms)

At Harris Middle School, we believe in developing internationally minded individuals who are caring, respectful, and mindful of intercultural interactions and differences. As an authorized International Baccalaureate (IB) Middle Years Programme (MYP) World School, we are committed to a high quality, challenging, and international education. Our extracurricular offerings are vast in order to prepare well-rounded students who will strive to be responsible, inquisitive, honest, and open-minded individuals. Our scholars aspire to be beacons of knowledge and become contributing members of their communities to create a better world.

♦ **ACADEMIC OFFERINGS:** International Baccalaureate (IB), AVID, Gifted & Talented, Middle School Partners, Pre-AP, World Languages • Art, Band, Choir, Mariachi, Orchestra, Theatre, Theatre Tech • AVID Excel • Special Education: ACE, BCM, PBIS

♦ **EXTRACURRICULAR ACTIVITIES:** Basketball, Cross Country, Football, Golf, Soccer, Tennis, Volleyball • LOTC • Robotics, Art Club, Chess Club, Photography, Recycling Club, Peer Mediators, National Junior Honor Society, Student Council, French Club, Gamma Sigma Pearls, Spanish Club, Journalism/Yearbook

♦ **EXTENDED DAY PARTNER:** YMCA of Greater San Antonio

♦ **PARENT ORGANIZATION:** Family Engagement

♦ **COMMUNITY PARTNERS:** Big Brothers Big Sisters, Communities in Schools



6-8

### 2018 State Accountability Improvement Required

#### School Start/End Times: 8:45 a.m. - 4 p.m.

Earliest Drop-off: 7:30 a.m.

Latest Pick-up: 4:30 p.m.

Latest Pick-up

(Extended Day): 6 p.m.

#### School Uniform Color:

White, Green, Yellow



## Henry Wadsworth Longfellow Middle School

1130 E. Sunshine Drive, San Antonio, TX 78228 • (210) 438-6520 | [www.saisd.net/longfellowms](http://www.saisd.net/longfellowms)

At Longfellow Middle School, we believe in educating students to become thoughtful global citizens. Through the International Baccalaureate framework, we provide an inclusive, relevant, comprehensive education within a principled, diverse community. As an AVID national demonstration campus, we utilize AVID strategies to help prepare students for college readiness. In addition to academic classes, we offer a wide range of electives. At Longfellow, we strive to meet the educational needs of all of our students. To this end, we provide ESL, special education and gifted & talented services for our students who qualify.

♦ **ACADEMIC OFFERINGS:** International Baccalaureate (IB) Middle Years Programme candidate school, AVID, Gifted & Talented, Middle School Partners, Pre-AP • Engineering Design, IT – Computer/Network Technician, Printing & Imaging Technology, Robotics, Career Investigations, STEM • Spanish, French, Mandarin Chinese • Art, Band, Choir, Dance, Mariachi, Orchestra, Theatre • English as a Second Language • Special Education: ACE, BCM, BSC, PBIS

♦ **EXTRACURRICULAR ACTIVITIES:** Basketball, Cross Country, Football, Golf, Soccer, Tennis, Volleyball, Track and Field • LOTC • Student Council, National Junior Honor Society, Gamma Sigma Pearls, Robotics, Spanish Club

♦ **EXTENDED DAY PARTNER:** YMCA of Greater San Antonio, Master Teacher Tutorial Program

♦ **PARENT ORGANIZATION:** PTA

♦ **COMMUNITY PARTNERS:** Communities in Schools, YMCA



6-8

### 2018 State Accountability Improvement Required

#### School Start/End Times: 8:30 a.m. - 4 p.m.

Earliest Drop-off: 7:45 a.m.

Latest Pick-up: 4:15 p.m.

#### School Uniform Color:

White, Blue, Yellow



## James Russell Lowell Middle School

919 W. Thompson Place, San Antonio, TX 78226 • (210) 228-1225 | [www.saisd.net/lowellms](http://www.saisd.net/lowellms)

At Lowell Middle School, we believe in providing opportunities that build lifelong, confident learners who have the tools necessary for success in this ever-changing world. As a RaiseUp Texas School, we are implementing instructional strategies in every classroom that will help all students learn and achieve their goals. Our mission is to develop meaningful relationships, learning that matters, and transform students into leaders.

♦ **ACADEMIC OFFERINGS:** Gifted & Talented, Middle School Partners, Pre-AP, World Languages • STEM - Investigating Careers • Art, Band, Choir, Theatre • Special Education: ACE, BSC, PBIS

♦ **EXTRACURRICULAR ACTIVITIES:** Basketball, Cross Country, Football, Golf, Soccer, Tennis, Volleyball • LOTC • History Club, Art Club, National Junior Honor Society, Chess Club, Pep Squad, Book Club, Yearbook, Robotics, UIL

♦ **EXTENDED DAY PARTNER:** YMCA of Greater San Antonio

♦ **PARENT ORGANIZATION:** Booster Club

♦ **COMMUNITY PARTNERS:** Communities in Schools



Breakfast



Lunch



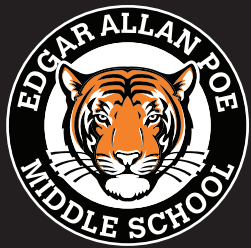
Supper



Magnet Programs



Dual Language



6-8

**2018 State Accountability Improvement Required**

**School Start/End Times:**  
8:30 a.m. - 4 p.m.

Earliest Drop-off: 7:30 a.m.  
Latest Pick-up: 4:15 p.m.

**School Uniform Color:**  
White, Black, Orange



## Edgar Allan Poe Middle School

814 Aransas Ave., San Antonio, TX 78210 • (210) 228-1235 | [www.saisd.net/poems](http://www.saisd.net/poems)

At Poe Middle School, we believe every student can demonstrate mastery of learning at high levels through rigorous and engaging instruction. We provide students with various learning opportunities such as the master student extended learning day, gifted & talented, AVID, RaiseUp Texas, special education, ESL, and partner programs. We offer Spanish and algebra courses where students can earn high school credits. Our school educates all students, and our mission is to prepare each and every student for college and career readiness.

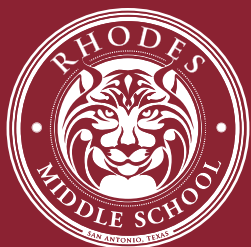
♦ **ACADEMIC OFFERINGS:** AVID, Gifted & Talented, Middle School Partners, Pre-AP • Tech Apps • Art, Band, Choir, Mariachi, Theatre • English as a Second Language • Special Education: ACE, PBIS

♦ **EXTRACURRICULAR ACTIVITIES:** Basketball, Cross Country, Football, Soccer, Tennis, Volleyball • LOTC • Girl Zone, Student Council

♦ **EXTENDED DAY PARTNER:** YMCA of Greater San Antonio, Master Student Extended Learning Time

♦ **PARENT ORGANIZATION:** PTA

♦ **COMMUNITY PARTNERS:** Magik Theatre, PRESA Community Center, Communities in Schools



6-8

**2018 State Accountability Met Standard**

**School Start/End Times:**  
8:30 a.m. - 4 p.m.

Earliest Drop-off: 7:30 a.m.  
Latest Pick-up: 6 p.m.  
Latest Pick-up (Extended Day): 6 p.m.

**School Uniform Color:**  
White, Black, Maroon

**Choice Specialization Program:**  
Media and Technology  
Application required – see page 10.



## Jeremiah Rhodes Middle School

3000 Tampico St., San Antonio, TX 78207 • (210) 978-7925 | [www.saisd.net/rhodesms](http://www.saisd.net/rhodesms)

At Jeremiah Rhodes Middle School, we believe students deserve and are entitled to every opportunity to leave with the essential knowledge and skills necessary to further their education. As the world changes and becomes more heavily reliant on technology as a means to an end, we feel that providing classrooms that bring together standard teachings, technology, and real-world applications would best prepare them for the awaiting higher levels of education and future careers. We prepare our students for a world that embraces technology in a multitude of ways. From building bridges to troubleshooting computer circuit boards, students are challenged and develop valuable problem-solving and critical-thinking skills through hands-on learning.

♦ **ACADEMIC OFFERINGS:** Animation, Audio & Video Production, IT – Computer Science and Programming, IT – Computer/Network Technician • Advanced Placement (AP), Dual Credit, Gifted & Talented, Middle School Partners, Pre-AP, World Languages • Art, Band, Choir, Mariachi, Music, Theatre • Special Education: ACE, PBIS

♦ **EXTRACURRICULAR ACTIVITIES:** Basketball, Cheer, Cross Country, Football, Golf, Soccer, Tennis, Volleyball • LOTC • Robotics, Chess Club, Theater Club, Running Club, Reading Club

♦ **EXTENDED DAY PARTNER:** 21st Century Extended Day Grant

♦ **PARENT ORGANIZATION:** PTA

♦ **COMMUNITY PARTNERS:** Communities in Schools, City-Year, Family Services, Dee Howard Aerospace Foundation, Good Samaritan Center



6-8

**2018 State Accountability  
Met Standard**

**School Start/End Times:**

**8:45 a.m. - 4:15 p.m.**

Earliest Drop-off: 8 a.m.

Latest Pick-up: 4:30 p.m.

Latest Pick-up

(Extended Day): 6 p.m.

**School Uniform Color:**

White, Black, Purple



7-8

**2018 State Accountability  
Met Standard**

**School Start/End Times:**

**8:45 a.m. - 4 p.m.**

Earliest Drop-off: 7:30 a.m.

Latest Pick-up: 5:30 p.m.

Latest Pick-up

(Extended Day): 6 p.m.

**School Uniform Color:**

Black, Red



## Harry H. Rogers Middle School

314 Galway St., San Antonio, TX 78223 • (210) 438-6840 | [www.saisd.net/rogersms](http://www.saisd.net/rogersms)

At Rogers Middle School, we believe in academic excellence for every student. We provide students with a strong educational foundation in math, reading, science and social studies. Our extracurricular activities provide students with social-emotional skills as well as support the core academic program, enabling students to be successful 21st-century learners. Our school educates all students, providing ESL, special education, and gifted & talented services to eligible students.

♦ **ACADEMIC OFFERINGS:** Gifted & Talented, Middle School Partners, Pre-AP • Career Portals • Art, Band, Choir, Music, Orchestra, Theatre • English as a Second Language • Special Education: ACE, BSC, PBIS

♦ **EXTRACURRICULAR ACTIVITIES:** Basketball, Cross Country, Football, Golf, Soccer, Tennis, Volleyball • LOTC • Agriculture Club

♦ **EXTENDED DAY PARTNER:** YMCA of Greater San Antonio

♦ **PARENT ORGANIZATION:** PTA

♦ **COMMUNITY PARTNERS:** Communities in Schools

## Fidel Tafolla Middle School

1303 W. César Chávez Blvd., San Antonio, TX 78207 • (210) 978-7930 | [www.saisd.net/tafollams](http://www.saisd.net/tafollams)

At Tafolla Middle School, we believe in working together for student success and empowerment for their future. We provide students with five foreign languages: Chinese, Japanese, French, Russian, and Spanish. We also provide high school courses in English and math, as well as a variety of electives in art and music. Tafolla has an active Partner's program, outstanding musical opportunities, and award-winning athletics. Our school educates all students, providing English as a second language, special education, and gifted & talented services to eligible students.

♦ **ACADEMIC OFFERINGS:** Advanced Placement (AP), Gifted & Talented, Middle School Partners, Pre-AP • World Languages (Chinese, Japanese, French, Russian, Spanish) • English as a Second Language • Art, Band, Choir, Mariachi, Music, Orchestra, Theatre • Special Education: ACE, BCM, BSC, PBIS

♦ **EXTRACURRICULAR ACTIVITIES:** Basketball, Cross Country, Football, Golf, Soccer, Tennis, Volleyball • LOTC • Mini G.E.M.S., Art Club, Geek Club, Drama Club, Student Government • Variety of City Year sponsored clubs

♦ **EXTENDED DAY PARTNER:** YMCA of Greater San Antonio

♦ **PARENT ORGANIZATION:** PTO

♦ **COMMUNITY PARTNERS:** Communities in Schools, City Year, Big Brothers Big Sisters



Breakfast



Lunch



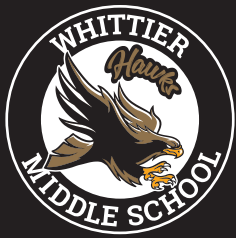
Supper



Magnet Programs



Dual Language



6-8

**2018 State Accountability  
Met Standard**

**Distinction Designations:**  
Social Studies, Academic Growth

**School Start/End Times:**

**8:45 a.m. - 4 p.m.**

Earliest Drop-off: 7:30 a.m.

Latest Pick-up: 4:30 p.m.

Latest Pick-up

(Extended Day): 6:15 p.m.

**School Uniform Color:**

White, Black, Yellow

## John Greenleaf Whittier Middle School

2101 Edison Drive, San Antonio, TX 78201 • (210) 738-9755 | [www.saisd.net/whittierms](http://www.saisd.net/whittierms)

At Whittier Middle School, we believe that students will meet the high expectations and challenges presented to them each and every day. We provide students with a wide variety of options to explore as they prepare to attend their high school of choice, which will lead to successful futures. These include the areas of science, technology, engineering, and math. We offer extracurricular programs that help develop the whole child and prepare our students to become successful and productive members of their communities.

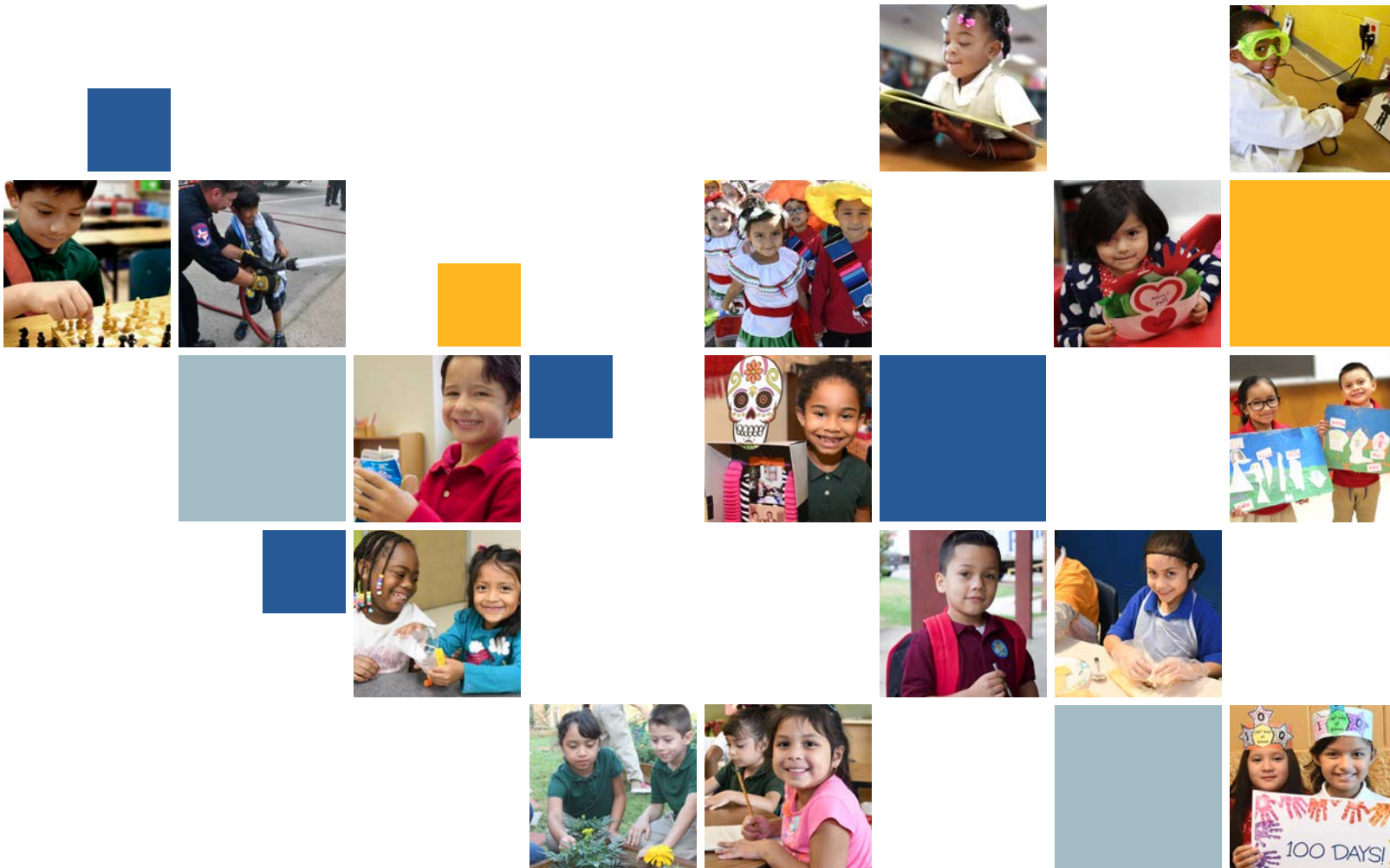
♦ **ACADEMIC OFFERINGS:** AVID, Gifted & Talented, Middle School Partners, Pre-AP • Art, Band, Choir, Mariachi, Theatre • Bilingual Education/Dual Language • Special Education: ACE, BCM, PBIS

♦ **EXTRACURRICULAR ACTIVITIES:** Basketball, Cross Country, Football, Golf, Soccer, Tennis, Volleyball, Track • LOTC • Robotics, Yearbook

♦ **EXTENDED DAY PARTNER:** YMCA of Greater San Antonio

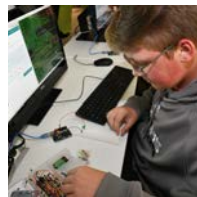
♦ **PARENT ORGANIZATION:** PTA

♦ **COMMUNITY PARTNERS:** Big Brother Big Sisters, Communities in Schools



# EXPERIENCE SAISD ACADEMIES

- Advanced Learning Academy
- Ball Academy
- Beacon Hill Academy
- Bonham Academy
- Bowden Academy
- Cotton Academy
- Crockett Academy
- Douglass Academy
- Fenwick Academy
- Forbes Academy
- Foster Academy
- Green Academy
- Hawthorne Academy
- Herff Academy
- Irving Dual Language Academy
- Japhet Academy
- M.L. King Academy
- Margil Academy
- Mission Academy
- Ogden Academy
- Riverside Park Academy
- Will Rogers Academy
- Steele Montessori Academy
- Mark Twain Dual Language Academy
- Woodlawn Academy
- Young Men's Leadership Academy
- Young Women's Leadership Academy



Breakfast



Lunch



Supper



Magnet Programs



Dual Language



## PK-12

### 2018 State Accountability Met Standard

**Distinction Designations:**  
Reading, Science, Social Studies

### School Start/End Times: 8:10 a.m. - 4 p.m.

Earliest Drop-off: 7:30 a.m.

Latest Pick-up: 4 p.m.

Latest Pick-up

(Extended Day): 6 p.m.

### School Uniform Color:

White, Blue, Green

### Choice Program Specialization:

Creative and Academic Challenges,  
Trinity University Lab School  
Application required - see page 10.



## PK-8

### 2018 State Accountability Met Standard

**Distinction Designations:**  
Science, Postsecondary Readiness

### School Start/End Times: 8 a.m. - 3:15 p.m.

Earliest Drop-off: 7:30 a.m.

Latest Pick-up: 3:20 p.m.

Latest Pick-up

(Extended Day): 6:20 p.m.

### School Uniform Color:

Black, Gray, Green, Yellow



## Advanced Learning Academy

621 W. Euclid Ave., San Antonio, TX 78212 (PK-3) • (210) 738-9760 • [www.saisd.net/ala](http://www.saisd.net/ala)

637 N. Main Ave., San Antonio, TX 78205 (4-12) • (210) 738-9763 • [www.saisd.net/ala](http://www.saisd.net/ala)

The Advanced Learning Academy is a place that lifts the ceiling on learning for all members of the educational community, including students, teachers, families and community. We provide 21st-century learning opportunities within a caring and open environment. Our partnership with Trinity University's Department of Education allows for the facilitation of curriculum design between the faculty assigned to our school, our school leadership team and SAISD curriculum leaders. We foster a depth of thinking through problem-solving, creative design and real-world applications as students develop deep content knowledge and cutting-edge learning skills to prepare them for any and all futures that they can envision.

♦ **ACADEMIC OFFERINGS:** Advanced Placement (AP), Dual Credit, Gifted & Talented, Pre-AP, World Languages • Makerspace • Art, Band, Dance, Mariachi, Music, Theatre

♦ **EXTRACURRICULAR ACTIVITIES:** Aquatics, Basketball, Cross Country, Golf, Soccer, Tennis, Volleyball • PreK-3rd: Little Chefs, Lego Club, Chess, Coding for Beginners, Chicken Coop Care, Tennis, Zumba, ArchKids and Design, Green Club, Chime Choir, Broadcast Journalism, Gardening, Newspaper and Social Justice, Stop Motion Video Club, Technology Response Team, UIL Creative Writing and Story Telling • 4th-12th: ArchKids, Geography Club, Origami Club, P7, Student Governing Board, SA BEST Robotics Team, GSA - Gender and Sexualities Alliance, Academic Decathlon, La Sociedad Honoraria Hispanica, High School UIL Academics

♦ **EXTENDED DAY PARTNER:** Boys & Girls Club of San Antonio, YMCA of Greater San Antonio

♦ **PARENT ORGANIZATION:** PTA

♦ **COMMUNITY PARTNERS:** Gemini Ink, Wolf Trap, Google Fiber, YMCA, Texas A&M San Antonio, Witte Museum, San Antonio Museum of Art, Mitchell Lake, Briscoe Art Museum, Curiosity Club, SAWS, San Antonio Museum of Art, San Antonio River Authority, DoSeum, Kingdom for Kids, City Year, Esparanza, Art Pace, San Antonio Public Library, Bibliotech, Trinity University

## Charles C. Ball Academy

343 Koehler Court, San Antonio, TX 78223 • (210) 438-6845 | [www.saisd.net/ballacademy](http://www.saisd.net/ballacademy)

At Charles C. Ball Academy, we are a neighborhood school that believes that all students deserve a well-rounded education grounded in a student-centered approach. Students are provided with project-based learning curriculum and a wide range of technology resources that increase rigor and relevance, and provide students with the 21st-century skills that they need to be successful in the careers of the future. The combination of a challenging instructional program and exceptional extracurricular programs cultivates a learning environment where students succeed both academically and socially.

♦ **ACADEMIC OFFERINGS:** AVID, Gifted & Talented, Pre-AP • Engineering Design, IT - Computer Science and Programming • Art, Band, Music • Bilingual Education/Dual Language • Special Education: ACE, PPCD

♦ **EXTRACURRICULAR ACTIVITIES:** Basketball, Cross Country, Football, Soccer, Volleyball • Coca-Cola Value Youth Program, Student Leaders, Robotics, Project Lead the Way, STEM Club, Tech Classes, Art, Makerspace Sessions, Ambassadors Student Leadership Class, English/Spanish Spelling Bee

♦ **EXTENDED DAY PARTNER:** Greater San Antonio After-School All-Stars

♦ **PARENT ORGANIZATION:** PTA



**PK-8**

**2018 State Accountability Improvement Required**

**School Start/End Times:**  
8:05 a.m. - 3:20 p.m.  
Earliest Drop-off: 7:30 a.m.  
Latest Pick-up: 3:30 p.m.

**School Uniform Color:**  
White, Blue



## Beacon Hill Academy

1411 W. Ashby Place, San Antonio, TX 78201 • (210) 738-9765 | [www.saisd.net/beaconhillacademy](http://www.saisd.net/beaconhillacademy)

At Beacon Hill Academy, we believe our students can and want to learn at their level and ability, yet desire to be challenged. We provide students with a variety of learning activities that allow them to create, design, and collaborate. These programs provide experiences for our students to apply real-life application to what they are learning in the classroom, especially collaboration and teamwork.

♦ **ACADEMIC OFFERINGS:** Gifted & Talented • Art, Band, Choir, Music • Bilingual Education/Dual Language • Special Education: ACE, PBIS, Resource

♦ **EXTRACURRICULAR ACTIVITIES:** Basketball, Cross Country, Football, Soccer, Volleyball • Art Club, STEAM Club

♦ **EXTENDED DAY PARTNER:** Greater San Antonio After-School All-Stars

♦ **PARENT ORGANIZATION:** PTA

♦ **COMMUNITY PARTNERS:** The University of Texas at San Antonio, San Antonio College, San Antonio Youth Literacy, HEB, COPS Metro



**K-8**

**2018 State Accountability Met Standard**

**School Start/End Times:**  
8:05 a.m. - 3:20 p.m.  
Earliest Drop-off: 7:30 a.m.  
Latest Pick-up: 3:40 p.m.  
Latest Pick-up (Extended Day): 6 p.m.

**School Uniform Color:**  
Yellow

**Choice Program Specialization:**  
Dual Language, Environmental Science and Fine Arts  
Application required – see page 10.



## James Bonham Academy

925 S. St. Mary's St., San Antonio TX 78205 • (210) 228-3300 | [www.saisd.net/bonhamacademy](http://www.saisd.net/bonhamacademy)

Nestled in the heart of Southtown, Bonham Academy was founded in 1893. This unique school maintains a strong history of family and community involvement. Our small school is a safe environment for students to explore their interests. With a focus on our three pillars – language, fine arts, and science – our school is committed to ensuring all of our students have the opportunities they deserve. As a neighborhood school, we serve students primarily from King William and Lavaca. We have the opportunity to also serve students outside of our attendance zone. We look forward to the opportunity to serve your familias.

♦ **ACADEMIC OFFERINGS:** Advanced Placement (AP), AVID, Gifted & Talented, Pre-AP, World Languages • Art, Band, Choir, Music, Theatre • Bilingual Education/Dual Language • Special Education: PBIS

♦ **EXTRACURRICULAR ACTIVITIES:** Academy Sports • Robotics, Chess Club, Art History, Philosophy Club, Opera Club, Girl Scouts, Boy Scouts, Nepohualtitzin Club, Travel Society, Bountiful Bonham

♦ **EXTENDED DAY PARTNER:** YMCA of Greater San Antonio

♦ **PARENT ORGANIZATION:** PTA, Friends of Bonham, Watch DOGS

♦ **COMMUNITY PARTNERS:** The University of Texas at San Antonio, San Anto Cultural Arts, San Antonio Youth Literacy, ReWorks SA, HEB, RBFCU, Jefferson Bank, Girls' Inc., SNIPSA, Guide Dogs of Texas Inc., Whataburger, San Antonio Public Library, Bibliotech



Breakfast



Lunch



Supper



Magnet Programs



Dual Language



**PK-8**

**2018 State Accountability  
Met Standard**

**Distinction Designations:**  
Science, Academic Growth,  
Closing Performance Gaps

**School Start/End Times:**  
**8 a.m. - 3:20 p.m.**

Earliest Drop-off: 7:30 a.m.  
Latest Pick-up: 3:20 p.m.  
Latest Pick-up  
(Extended Day): 6 p.m.

**School Uniform Color:**  
White, Red



## Artemisia Bowden Academy

515 Willow St., San Antonio, TX 78202 • (210) 738-9770 | [www.saisd.net/bowdenacademy](http://www.saisd.net/bowdenacademy)

At Artemisia Bowden Academy, we believe in promoting a safe, engaging, and innovative learning community where students will gain foundational, academic, and personal skills to become leaders that positively impact their school and society. We strive for innovative classroom instruction and promote 21st-century learning. We take great pride in all of the community and mentoring partnerships that help promote our educational vision. We provide services in the areas of bilingual education/dual language, dyslexia, special education, and gifted & talented to all eligible students.

♦ **ACADEMIC OFFERINGS:** Pre-AP • Art, Band, Choir, Music • Bilingual Education/Dual Language • Special Education: ACE, PBIS, PPCD

♦ **EXTRACURRICULAR ACTIVITIES:** Basketball, Cross Country, Football, Soccer, Volleyball  
• Literature Club, Gardening Club, Student Safety Patrols

♦ **EXTENDED DAY PARTNER:** Boys & Girls Club of San Antonio

♦ **PARENT ORGANIZATION:** PTA

♦ **COMMUNITY PARTNERS:** Ella Austin, Girl Zone, Ft. Sam Houston, Dignowity Hill Neighborhood Association, Blue Star Art



**PK-8**

**2018 State Accountability  
Met Standard**

**Distinction Designation:** Math

**School Start/End Times:**  
**7:45 a.m. - 3:20 p.m.**

Earliest Drop-off: 7:20 a.m.  
Latest Pick-up: 3:30 p.m.  
Latest Pick-up  
(Extended Day): 5:30 p.m.

**School Uniform Color:**  
White, Green



## Agnes Cotton Academy

1616 Blanco Road, San Antonio, TX 78212 • (210) 738-9780 | [www.saisd.net/cottonacademy](http://www.saisd.net/cottonacademy)

At Cotton Academy, we believe in promoting a welcoming, engaging, and rigorous learning community where students develop the academic and social skills to become leaders that positively impact society. Our academic program fosters the development of critical thinking, problem-solving, and communication skills that are necessary for college and career readiness. The combination of our challenging instructional program and exceptional extracurricular programs cultivates a learning environment where students succeed both academically and socially.

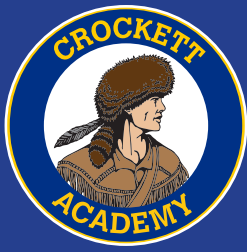
♦ **ACADEMIC OFFERINGS:** Gifted & Talented • Art, Band, Cheer, Music • Bilingual Education/Dual Language • Special Education: PBIS

♦ **EXTRACURRICULAR ACTIVITIES:** Basketball, Cross Country, Football, Soccer, Volleyball, Cheerleading • Young Professionals Organization, Art Club, Peer Assistance & Leadership (PALS), Coca-Cola Valued Youth Program, Student Safety Patrols, Garden Club

♦ **EXTENDED DAY PARTNER:** YMCA of Greater San Antonio, Jump SA Youth Program

♦ **PARENT ORGANIZATION:** Cotton Academy is in the process of starting a PTA

♦ **COMMUNITY PARTNERS:** Big Brothers Big Sisters, SA Youth Literacy Buddy Readers, Beacon Hill Community Mentor Program



**PK-8**

**2018 State Accountability Improvement Required**

**School Start/End Times:**  
**8:05 a.m. - 3:20 p.m.**

Earliest Drop-off: 7:15 a.m.  
Latest Pick-up: 3:40 p.m.  
Latest Pick-up  
(Extended Day): 6 p.m.

**School Uniform Color:**  
Black, Gray, Blue, Yellow



## David Crockett Academy

2215 Morales St., San Antonio, TX 78207 • (210) 738-9785 | [www.saisd.net/crockettacademy](http://www.saisd.net/crockettacademy)

At Crockett Academy, our goal is to provide all students with a safe learning environment that produces a well-rounded education. Our teachers and staff challenge students to reach their highest potential on a daily basis in academics, athletics, arts and citizenship. Crockett Academy has adopted the Ron Clark's Essential 55 and in conjunction with PBIS, our students, staff and parents have entered into a PACT: Pride, Accountability, Character and Teamwork. We believe our students are able to build character by providing community service to their school, neighborhood and city to become valuable assets in the 21st century.

♦ **ACADEMIC OFFERINGS:** AVID, Gifted & Talented • Art, Choir, Music, Orchestra • Bilingual Education/Dual Language • Special Education: ACE, PBIS, SOLE

♦ **EXTRACURRICULAR ACTIVITIES:** Basketball, Cross Country, Football, Soccer, Volleyball • Robotics, Cheer/Dance, Art Club

♦ **EXTENDED DAY PARTNER:** YMCA of Greater San Antonio

♦ **PARENT ORGANIZATION:** PTA

♦ **COMMUNITY PARTNERS:** St. Mark's Episcopal Church, Communities in School, San Antonio Youth Literacy, HEB, The University of Texas at San Antonio, Dan Cook Youth Center



**PK-8**

**2018 State Accountability Improvement Required**

**School Start/End Times:**  
**8:05 a.m. - 3:20 p.m.**

Earliest Drop-off: 7:30 a.m.  
Latest Pick-up: 4 p.m.

**School Uniform Color:**  
Gray, Blue



## Frederick Douglass Academy

318 Martin Luther King Drive, San Antonio, TX 78203 • (210) 228-3315 | [www.saisd.net/douglassacademy](http://www.saisd.net/douglassacademy)

At Douglass Academy, we believe in providing a strong academic curriculum and opportunities for students to visit colleges, engage in school gardening, and learn more about technological advances within their local and global community. We encourage students to engage in problem-solving and critical thinking. We understand part of our mission as educators is to build grit and relentlessness within our students, so we engage students in multiple opportunities to practice higher-order thinking skills. We encourage students, as well as teachers, to expand their learning beyond the classroom walls. We strive for all students to be college-ready not only in academics but confidence, so they believe and can confidently soar as leaders of the future!

♦ **ACADEMIC OFFERINGS:** Gifted & Talented, Pre-AP, World Languages • Art, Band, Cheer, Choir, Music, Theatre • Special Education: ACE, PBIS

♦ **EXTRACURRICULAR ACTIVITIES:** Basketball, Football, Soccer, Volleyball • Chess Club, Robotics, Garden Club, Girls Who Code, Broadcasting, Peer Assistance & Leadership (PALS), Student Council, National Junior Honor Society, Young Kings Men Club

♦ **EXTENDED DAY PARTNER:** Boys & Girls Club of San Antonio

♦ **PARENT ORGANIZATION:** PTA

♦ **COMMUNITY PARTNERS:** No Excuses University Network, DoSeum, San Antonio Youth Literacy, Girls Zone, Mount Zion Baptist Church, San Antonio Fire Department (sponsored by Chief Hood)



Breakfast



Lunch



Supper



Magnet Programs



Dual Language



**PK-8**

**2018 State Accountability  
Met Standard**  
Distinction Designation: Math

**School Start/End Times:**  
**8:05 a.m. - 3:20 p.m.**  
Earliest Drop-off: 7:30 a.m.  
Latest Pick-up: 3:50 p.m.  
Latest Pick-up  
(Extended Day): 6 p.m.

**School Uniform Color:**  
White, Black, Blue, Green



## Marin B. Fenwick Academy

1930 Waverly Ave., San Antonio, TX 78228 • (210) 438-6540 | [www.saisd.net/fenwickacademy](http://www.saisd.net/fenwickacademy)

At Fenwick Academy, we believe that all students deserve to have access to a well-rounded education that will prepare them to be responsible, successful, pro-active participants in their future. Instruction that engages students in inquiry, critical thinking, problem-solving, creativity and social interactions are the foundation of learning opportunities at our campus. Fenwick's educational program encompasses academics, fine arts, physical fitness, and social-emotional learning. Our extracurricular offerings enhance the instruction occurring in the classroom and give students additional opportunities to develop their interests and leadership skills.

- ♦ **ACADEMIC OFFERINGS:** International Baccalaureate (IB) Primary Years Programme (PYP) and Middle Years Programme (MYP) candidate, Gifted & Talented • Art, Choir, Music, Orchestra, Theatre • Bilingual Education/Dual Language • Special Education: ACE, PBIS
- ♦ **EXTRACURRICULAR ACTIVITIES:** Basketball, Cross Country, Football, Soccer, Volleyball • Chess Club, Drama Club, One-Act Play, UIL, Drum Ensemble, Opera Club, Peer Assistance & Leadership (PALS), Art Club, Student Safety Patrols, Athletics, Girl Scouts, Student Council, National Junior Honor Society
- ♦ **EXTENDED DAY PARTNER:** YMCA of Greater San Antonio
- ♦ **PARENT ORGANIZATION:** PTA
- ♦ **COMMUNITY PARTNERS:** HEB, YMCA, Girls Inc, SAC, St. Mary's University, Lion's Club



**PK-8**

**2018 State Accountability  
Met Standard**  
Distinction Designation: Science

**School Start/End Times:**  
**8:10 a.m. - 3:10 p.m.**  
Earliest Drop-off: 7:30 a.m.  
Latest Pick-up: 3:30 p.m.  
Latest Pick-up  
(Extended Day): 6 p.m.

**School Uniform Color:**  
White, Black, Blue, Yellow, Maroon



## Muriel Vance Forbes Academy

2630 Sally Gay Drive, San Antonio, TX 78223 • (210) 438-6850 | [www.saisd.net/forbesacademy](http://www.saisd.net/forbesacademy)

At Forbes Academy, our small campus size allows teachers and staff to provide the instructional and emotional support each of our students need to feel both successful and safe each and every day. Generations of families attended Forbes throughout the years and we are proud to see this trend continue. Our teachers and staff focus on planning and providing all students with instruction that contains multiple levels of rigor, and there are a number of opportunities for students to participate in extracurricular activities as well. We believe these extracurricular and elective offerings not only provide our students the chance to participate in a well-rounded school day, but also allow students to show their individual talents and successes outside of academics.

- ♦ **ACADEMIC OFFERINGS:** Band, Music • Special Education: GEC
- ♦ **EXTRACURRICULAR ACTIVITIES:** Basketball, Volleyball, Touch Football
- ♦ **EXTENDED DAY PARTNER:** Greater San Antonio After-School All-Stars



**PK-8**

**2018 State Accountability  
Met Standard**

**School Start/End Times:**  
**8 a.m. - 3:20 p.m.**

Earliest Drop-off: 7:15 a.m.

Latest Pick-up: 3:20 p.m.

Latest Pick-up

(Extended Day): 6 p.m.

**School Uniform Color:**  
White, Red, Blue



## Inez Foster Academy

6718 Pecan Valley Drive, San Antonio, TX 78223 • (210) 438-6855 | [www.saisd.net/fosteracademy](http://www.saisd.net/fosteracademy)

At Foster Academy, we believe in providing high-quality instruction to all of our students, along with extracurricular offerings that help ensure a well-rounded education. Foster's master teachers serve all students and offer after-school tutoring, which enhances our students' educational experience. All students are recognized for their positive behavior, and will develop a variety of different skills during their time at Foster.

♦ **ACADEMIC OFFERINGS:** AVID, Gifted & Talented • Art, Band, Choir • Special Education: PBIS, PPCD

♦ **EXTRACURRICULAR ACTIVITIES:** Basketball, Football, Soccer, Volleyball, Track • Yearbook, Chess, Student Council

♦ **PARENT ORGANIZATION:** PTA



**K-8**

**2018 State Accountability  
Met Standard**

**School Start/End Times:**  
**7:45 a.m. - 3:20 p.m.**

Earliest Drop-off: 7:00 a.m.

Latest Pick-up: 3:30 p.m.

Latest Pick-up

(Extended Day): 6 p.m.

**School Uniform Color:**  
White, Black, Green, Yellow



## Robert B. Green Academy

122 W. Whittier St., San Antonio, TX 78210 • (210) 228-3325 | [www.saisd.net/greenacademy](http://www.saisd.net/greenacademy)

At Robert B. Green Academy, each faculty and staff member is committed to achievement and is dedicated to student success. Some of the exciting and outstanding programs at Green include the addition of the 6th through 8th-grade levels along with a band course, a growing PTA, and successful partnerships with various community sponsors including PRESA and the San Antonio Youth Literacy Program. The most important part of our school community is our children and the families we serve. We believe that parents and guardians are a valuable component of our students' education.

♦ **ACADEMIC OFFERINGS:** Gifted & Talented, World Languages • Art, Band, Choir, Music • Special Education: PBIS, ACE

♦ **EXTRACURRICULAR ACTIVITIES:** Basketball, Cross Country, Soccer • Student Council, PAL's, Athletics for girls and boys

♦ **EXTENDED DAY PARTNER:** Greater San Antonio After-School All-Stars

♦ **PARENT ORGANIZATION:** PTA

♦ **COMMUNITY PARTNERS:** PRESA, San Antonio Youth Literacy



Breakfast



Lunch



Supper



Magnet Programs



Dual Language



**K-8**

**2018 State Accountability  
Met Standard**

**School Start/End Times:**  
**8 a.m. - 3:15 p.m.**

Earliest Drop-off: 7:30 a.m.  
Latest Pick-up: 3:45 p.m.

**School Uniform Color:**  
Red

**Choice Program Specialization:**  
Visual Arts, Citizenship, Ethics  
Application required – see page 10.



## Nathaniel Hawthorne Academy

115 W. Josephine St., San Antonio, TX 78212 • (210) 738-9795 | [www.saisd.net/hawthorneacademy](http://www.saisd.net/hawthorneacademy)

At Hawthorne Academy, we have used research, community input, and a history of successful initiatives to develop a school model that will lead us to our ultimate goals - an exemplary education for all of our students and expanded opportunities for all members of the Hawthorne community. We provide students with a K-8 curriculum that includes a variety of extracurricular offerings. Our goal is to ensure that our students leave us with a resilient foundation that includes resources, abilities, and inspiration to overcome obstacles, fulfill obligations, and to not only achieve, but also surpass their expectations.

♦ **ACADEMIC OFFERINGS:** Advanced Placement (AP), Gifted & Talented, Pre-AP, World Languages • Art, Band, Choir, Mariachi, Music, Theatre • Special Education: PBIS

♦ **EXTRACURRICULAR ACTIVITIES:** Basketball, Football, Soccer, Volleyball • Coding Club, Green Club, Lunch Bunch Book Club, Girl Scouts, Theater Arts, Visual Arts, Athletics (Boys/Girls), UIL (elementary/middle school)

♦ **EXTENDED DAY PARTNER:** YMCA of Greater San Antonio

♦ **PARENT ORGANIZATION:** PTA

♦ **COMMUNITY PARTNERS:** Big Brothers/Big Sisters, YMCA of San Antonio, ACE



**PK-8**

**2018 State Accountability  
Improvement Required**

**School Start/End Times:**  
**8:05 a.m. - 3:20 p.m.**

Earliest Drop-off: 7:30 a.m.  
Latest Pick-up: 6 p.m.

**School Uniform Color:**  
White, Black, Blue

## Ferdinand Herff Academy

996 S. Hackberry St., San Antonio, TX 78210 • (210) 228-3330 | [www.saisd.net/herffacademy](http://www.saisd.net/herffacademy)

At Herff Elementary, we believe that all students are capable of learning and succeeding. We provide students with the necessary background to become productive citizens. Our extracurricular offerings include various after-school clubs hosted by classroom teachers. These programs serve as an enrichment to motivate students to meet their potential.

♦ **ACADEMIC OFFERINGS:** Dual Credit • Art, Band, Orchestra • Bilingual Education/Dual Language • Special Education: PBIS, PPCD

♦ **EXTRACURRICULAR ACTIVITIES:** Basketball, Cross Country • Gardening Club, Art Club

♦ **EXTENDED DAY PARTNER:** Greater San Antonio After-School All-Stars

♦ **COMMUNITY PARTNERS:** United Way Partnership





## PK-3 & 6

(expanding to PK-8)

**2018 State Accountability: N/A**  
Established in 2018-19

**School Start/End Times:**  
8 a.m. - 3:30 p.m.

Earliest Drop-off: 7:45 a.m.

Latest Pick-up: 3:45 p.m.

Latest Pick-up

(Extended Day): 6 p.m.

**School Uniform Color:** Red

**Choice Program Specialization:**  
Dual Language  
Application required – see page 10.



## Washington Irving Dual Language Academy

1300 Delgado St., San Antonio, TX 78207 • (210) 738-9740 | [www.saisd.net/irvingacademy](http://www.saisd.net/irvingacademy)

At Washington Irving Dual Language Academy, we believe that all students have the potential to develop into productive, high achieving global citizens. For this reason, we provide students with the most advanced comprehensive dual language experience that supports the development of highly proficient biliterate individuals with cognitive meta-linguistic skills.

- ♦ **ACADEMIC OFFERINGS:** Head Start, Bilingual Education/Dual Language, Gifted & talented, Speech, Guidance and Counseling • Art, Choir, Mariachi • Special Education: PBIS
- ♦ **EXTRACURRICULAR ACTIVITIES:** Physical Education • Art Club • Master Teacher Program
- ♦ **EXTENDED DAY PARTNER:** YMCA of Greater San Antonio
- ♦ **PARENT ORGANIZATION:** PTO
- ♦ **COMMUNITY PARTNERS:** Garrett Center



## PK-8

**2018 State Accountability**  
Met Standard

**School Start/End Times:**  
8:05 a.m. - 3:20 p.m.

Earliest Drop-off: 7:30 a.m.

Latest Pick-up: 3:40 p.m.

Latest Pick-up

(Extended Day): 4:45 p.m.

**School Uniform Color:**  
Blue



## Eloise Japhet Academy

314 Astor St., San Antonio, TX 78210 • (210) 228-3345 | [www.saisd.net/japhetacademy](http://www.saisd.net/japhetacademy)

At Japhet Academy, it is our goal to ensure every student receives quality instruction, every day, in every classroom. We provide a learner-centered education in an engaging atmosphere. We foster a life-long desire to learn by providing our students with the opportunities to develop themselves academically, physically, socially and emotionally. Through strong instructional practices and extracurricular opportunities, Japhet provides a fair and equitable education for all students that prepares them for high school and college.

- ♦ **ACADEMIC OFFERINGS:** AVID, Gifted & Talented, Middle School Partners, Pre-AP, World Languages • Art, Band, Choir, Music, Orchestra • Bilingual Education/Dual Language • Special Education: ACE, PBIS
- ♦ **EXTRACURRICULAR ACTIVITIES:** Basketball, Cross Country, Football, Soccer, Volleyball • Student Safety Patrols, Chess Club, Art Club, National Junior Honor Society, Student Council, Tech Apps, UIL
- ♦ **EXTENDED DAY PARTNER:** Greater San Antonio After-School All-Stars
- ♦ **PARENT ORGANIZATION:** PTA
- ♦ **COMMUNITY PARTNERS:** Direct General, COSTCO, Horace Mann, Liberty Mutual, AT&T, Home Depot, East Central Christian Fellowship



Breakfast



Lunch



Supper



Magnet Programs



Dual Language



**K-8**

**2018 State Accountability  
Met Standard**

**Distinction Designations:**

Academic Growth,  
Closing Performance Gaps

**School Start/End Times:**

**8:10 a.m. - 3:20 p.m.**

Earliest Drop-off: 7:30 a.m.

Latest Pick-up: 3:30 p.m.

Latest Pick-up

(Extended Day): 5:30 p.m.

**School Uniform Color:**

White, Black, Yellow



## Martin Luther King Academy

3501 M.L. King Drive, San Antonio, TX 78220 • (210) 978-7935 | [www.saisd.net/mlkingacademy](http://www.saisd.net/mlkingacademy)

At M.L.K. Academy, we believe all students have the ability to be well-rounded individuals. We encourage students to learn through investigation and real-world experiences. Life experiences are used as a catalyst for connecting academics and creating a thriving community. Partnerships between community members and the school develop the social-emotional skills of the students while supporting their academic needs. Exploration, questioning, hands-on learning, and creativity are the core of academic mastery in all grade levels.

♦ **ACADEMIC OFFERINGS:** Gifted & Talented • Art, Band • Special Education: ACE, PBIS

♦ **EXTRACURRICULAR ACTIVITIES:** Basketball, Golf, Soccer, Tennis, Volleyball • STEM Club, Chess Club, Scrabble Club, Newspaper Club, Peer Assistance & Leadership (PALS), Book Club, Student Council

♦ **EXTENDED DAY PARTNER:** Boys & Girls Club of San Antonio

♦ **PARENT ORGANIZATION:** PTA

♦ **COMMUNITY PARTNERS:** Big Brothers, Big Sisters, Girls Inc., Communities in Schools, City Year, IconTalks

## Antonio Margil Academy

1000 Perez Street. San Antonio, TX 78207 • (210) 738-9805 | [www.saisd.net/margilacademy](http://www.saisd.net/margilacademy)

At Antonio Margil Academy, we believe education is essential to a child's success. We provide a rigorous curriculum in which all students participate at a depth of knowledge that is challenging to them. In addition to students' academic growth, we believe how a student behaves is an important factor in success. Through the implementation of the Positive Behavioral Interventions & Supports program, we praise and reward students for making good choices that contribute to their social and emotional growth.

♦ **ACADEMIC OFFERINGS:** Gifted & Talented • Art, Band, Choir • Bilingual Education/Dual Language • Special Education: ACE, PBIS, PPCD

♦ **EXTRACURRICULAR ACTIVITIES:** Basketball, Cross Country, Football, Soccer, Volleyball • Robotics, Student Safety Patrols, Book Club, Middle School Athletics, Student Council, Crazy 8's Math Club, STEM Club, Gardening

♦ **EXTENDED DAY PARTNER:** YMCA of Greater San Antonio, SA Youth

♦ **PARENT ORGANIZATION:** PTA

♦ **COMMUNITY PARTNERS:** City Year, Lyft Fund, SA Youth, First Responders Mentorship, Texas A&M Internships, One Church, Pizza Hut Book It, SATX Social Rider Bike Club, HEB, San Antonio College, San Antonio Youth Literacy



**PK-7**

**2018 State Accountability  
Met Standard**

**School Start/End Times:**

**8:05 a.m. - 3:20 p.m.**

Earliest Drop-off: 7:30 a.m.

Latest Pick-up: 3:30 p.m.

Latest Pick-up

(Extended Day): 6 p.m.

**School Uniform Color:**

White, Blue, Yellow





**PK-8**

**2018 State Accountability  
Met Standard**

**Distinction Designations:**  
Reading, Science, Social Studies,  
Academic Growth, Closing  
Performance Gaps

**School Start/End Times:**  
**8 a.m. - 3:20 p.m.**

Earliest Drop-off: 7:20 a.m.  
Latest Pick-up: 3:40 p.m.  
Latest Pick-up  
(Extended Day): 6 p.m.

**School Uniform Color:**  
White, Royal Blue



## Mission Academy

9210 S. Presa St., San Antonio, TX 78223 • (210) 438-6880 | [www.saisd.net/missionacademy](http://www.saisd.net/missionacademy)

At Mission Academy, we believe in empowering all students who enter our doors with the knowledge and ability to establish successful lives and become productive leaders of society. We provide students with an equal opportunity to strive academically by offering rigorous academic exposure, small class sizes, technology-driven instruction, and continuous colleague collaboration and growth to enhance the overall classroom experience. We provide special education, Pre-AP, and gifted & talented services. Our extracurricular offerings develop camaraderie among students, strengthen relationships, instill leadership skills, and promote a “family”-oriented campus mentality by showing students how to care for one another.

♦ **ACADEMIC OFFERINGS:** Gifted & Talented, Pre-AP • Art, Band, Choir, Music, Theatre • Special Education: ACE, PBIS, Regional Day School Program for the Deaf (RDSPD)

♦ **EXTRACURRICULAR ACTIVITIES:** Basketball, Cross Country, Football, Soccer, Volleyball • STEM, Robotics

♦ **EXTENDED DAY PARTNER:** Boys & Girls Club of San Antonio

♦ **PARENT ORGANIZATION:** PTA

♦ **COMMUNITY PARTNERS:** Calumet, San Antonio Youth Literacy



**PK-8**

**2018 State Accountability  
Improvement Required**

**School Start/End Times:**  
**7:30 a.m. - 4 p.m.**

Earliest Drop-off: 7:30 a.m.  
Latest Pick-up: 4:15 p.m.  
Latest Pick-up  
(Extended Day): 6 p.m.

**School Uniform Color:**  
Black, Red



## Ira C. Ogden Academy

2215 Leal St., San Antonio, TX 78207 • (210) 738-9815 | [www.saisd.net/ogdenacademy](http://www.saisd.net/ogdenacademy)

At Ogden Academy, we believe that students deserve personalized instruction targeted toward their individual needs. We provide every student with a Chromebook loaded with a variety of digital tools designed to create small-group learning communities in each subject throughout the school day. In addition, our school has one or two Teaching Residents in 25 of our classrooms. The combination of digital learning tools, additional staff, and an extended school day allows teaching and learning at Ogden to take a creative and distinct approach designed to have the greatest impact on student learning.

♦ **ACADEMIC OFFERINGS:** Gifted & Talented • Art • Special Education: BSC

♦ **EXTRACURRICULAR ACTIVITIES:** Basketball, Football, Volleyball • Greater San Antonio After-School All-Stars

♦ **EXTENDED DAY PARTNER:** Greater San Antonio After-School All-Stars

♦ **COMMUNITY PARTNERS:** Relay Lab Schools



Breakfast



Lunch



Supper



Magnet Programs



Dual Language



**PK-8**

**2018 State Accountability  
Met Standard**  
Distinction Designation: Science

**School Start/End Times:**

**8:05 a.m. - 3:20 p.m.**

Earliest Drop-off: 7:30 a.m.

Latest Pick-up: 3:20 p.m.

Latest Pick-up

(Extended Day): 6 p.m.

**School Uniform Color:**

Blue



## Riverside Park Academy

202 School St., San Antonio, TX 78210 • (210) 228-3355 | [www.saisd.net/riversideparkacademy](http://www.saisd.net/riversideparkacademy)

At Riverside Park Academy, our primary focus is to create an optimal learning experience for each and every student that attends our school. We serve students in grades from pre-kindergarten to eight and offer an extended day program through the Greater San Antonio After-School All-Stars.

♦ **ACADEMIC OFFERINGS:** Gifted & Talented • Art, Band, Cheer, Dance, Music, Orchestra • Bilingual Education/Dual Language • Special Education: ACE, PPCD

♦ **EXTRACURRICULAR ACTIVITIES:** Basketball, Cross Country, Football, Soccer, Volleyball • Art Club, Scrapbook Club, Garden Club, Run Club, Girl Zone

♦ **EXTENDED DAY PARTNER:** Greater San Antonio After-School All-Stars

♦ **PARENT ORGANIZATION:** PTO

♦ **COMMUNITY PARTNERS:** PRESA Community Center, United Way



**PK-8**

**2018 State Accountability  
Met Standard**

**School Start/End Times:**

**8 a.m. - 3:20 p.m.**

Earliest Drop-off: 7:30 a.m.

Latest Pick-up: 3:20 p.m.

Latest Pick-up

(Extended Day): 6 p.m.

**School Uniform Color:**

White, Black, Purple



## Will Rogers Academy

620 McIlvaine St., San Antonio, TX 78212 • (210) 738-9825 | [www.saisd.net/rogersacademy](http://www.saisd.net/rogersacademy)

At Will Rogers Academy, our mission is to provide students with an exceptional academic and social learning experience that will become the foundation for students to reach their full potential. Our school provides core subjects, bilingual education/dual language, social-emotional learning, special education, and gifted & talented services. Students at Will Rogers are also able to engage in a variety of electives as well as extracurricular clubs and programs. Together, the academic instruction and extracurricular programs help nurture disciplined minds, strong character, healthy bodies, and creative spirits.

♦ **ACADEMIC OFFERINGS:** Social and Emotional Learning, AVID, Gifted & Talented • Art, Band, Choir • Bilingual Education/Dual Language • Special Education: ACE

♦ **EXTRACURRICULAR ACTIVITIES:** Basketball, Football, Volleyball • Music, Robotics, Girls on the Run, Academy Sports League, and Peer Assistance & Leadership (PALS)

♦ **EXTENDED DAY PARTNER:** Boys & Girls Club of San Antonio

♦ **PARENT ORGANIZATION:** PTA

♦ **COMMUNITY PARTNERS:** Big Sisters, Zumba



**PK-3**

(expanding to PK-6)

**2018 State Accountability  
Met Standard**

**School Start/End Times:**

**8 a.m. - 3:20 p.m.**

Earliest Drop-off: 7:30 a.m.

Latest Pick-up: 4 p.m.

Latest Pick-up

(Extended Day): 6 p.m.

**School Uniform Color:**

White, Black, Red

**Choice Program Specialization:**

Montessori

Application required – see page 10.



## Laura Steele Montessori Academy

722 Haggin St., San Antonio, TX 78210 • (210) 438-6870 | [www.saisd.net/steelemontessori](http://www.saisd.net/steelemontessori)

At Steele Montessori Academy, we believe in student-centered learning using a Montessori approach with curriculum and a strong emphasis on creating independent individuals who show empathy and compassion. We offer trained Montessori teachers, multi-age groupings, hands-on learning, and self-directed activity through a program developed in collaboration with the National Center for Montessori in the Public Sector.

♦ **ACADEMIC OFFERINGS:** Gifted & Talented • Art • Special Education: PPCD, Special Education Inclusion

♦ **EXTRACURRICULAR ACTIVITIES:** Art Club, Robotics, Gardening

♦ **EXTENDED DAY PARTNER:** Boys & Girls Club of San Antonio

♦ **PARENT ORGANIZATION:** PTA

## Mark Twain Dual Language Academy

2411 San Pedro Ave., San Antonio, TX 78212 • (210) 738-9745 | [www.saisd.net/twainduallanguage](http://www.saisd.net/twainduallanguage)

At Mark Twain Dual Language Academy, we believe that all of our students should develop into responsible high-achieving global citizens. We pride ourselves in offering the most advanced and comprehensive wall-to-wall bilingual education/dual language experience that fosters high caliber bi-literacy, strong cognitive metalinguistic skills, and a deeper bi-cultural appreciation. Our extracurricular activities, which will continue to expand, are of high interest and help round out the development of our students.

♦ **ACADEMIC OFFERINGS:** Gifted & Talented • Art, Choir • Bilingual Education/Dual Language • Dyslexia • Character Development • Special Education: PBIS, Inclusion and Resource, Speech

♦ **EXTRACURRICULAR ACTIVITIES:** Snapology (Robotics), Drama Kids, Art Club, Spacemaker-coming soon, Weekend athletics-coming soon, Ballet Folclórico-coming soon

♦ **EXTENDED DAY PARTNER:** YMCA of Greater San Antonio

♦ **PARENT ORGANIZATION:** PTA

♦ **COMMUNITY PARTNERS:** The University of Texas at San Antonio Lab School



**PK-5**

(expanding to PK-8)

**2018 State Accountability  
Met Standard**

Paired with Rogers Academy

**School Start/End Times:**

**8 a.m. - 3:15 p.m.**

Earliest Drop-off: 7:15 a.m.

Latest Pick-up: 3:30 p.m.

Latest Pick-up

(Extended Day): 4:45 p.m.

**School Uniform Color:**

White, Blue, Orange

**Choice Program Specialization:**

Dual Language

Application required – see page 10.



Breakfast



Lunch



Supper



Magnet Programs



Dual Language



**K-8**

**2018 State Accountability  
Met Standard**

**School Start/End Times:**

**8:05 a.m. - 3:20 p.m.**

Earliest Drop-off: 7:15 a.m.

Latest Pick-up: 3:45 p.m.

Latest Pick-up

(Extended Day): 6 p.m.

**School Uniform Color:**

White, Black, Red



## Woodlawn Academy

1717 W. Magnolia Ave., San Antonio, TX 78201 • (210) 438-6560 | [www.saisd.net/woodlawnacademy](http://www.saisd.net/woodlawnacademy)

Woodlawn Academy is a community-centered school that believes in teaching the whole child. We offer a variety of extracurricular activities, including sports and clubs, in addition to a student-centered instructional approach that promotes inquiry-based learning. We provide students with a unique education through the International Baccalaureate (IB) philosophy. As an IB World School for the Middle Years Programme (MYP) and Primary Years Programme (PYP), we aim to develop inquiring, knowledgeable and caring young people who help to create a better and more peaceful world through intercultural understanding and respect. Our academics and extracurricular programs provide students with a well-rounded, whole-child education.

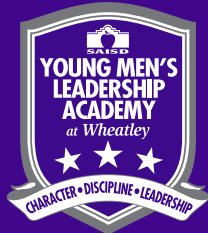
♦ **ACADEMIC OFFERINGS:** International Baccalaureate (IB) Middle Years Programme (MYP) and Primary Years Programme • Art, Band, Choir, Music • Bilingual Education/Dual Language • Special Education: ACE, PBIS

♦ **EXTRACURRICULAR ACTIVITIES:** Basketball, Cross Country, Football, Soccer, Volleyball • Robotics, Art Club, Run Club, Photography Club, UIL, Journalism Club, Book Club

♦ **EXTENDED DAY PARTNER:** Greater San Antonio After-School All-Stars

♦ **PARENT ORGANIZATION:** PTO

♦ **COMMUNITY PARTNERS:** San Antonio Youth Literacy



**4-10**

(expanding to 4-12)

**2018 State Accountability  
Met Standard  
Distinction Designation: Science**

**School Start/End Times:**

**8:15 a.m. - 4 p.m.**

Earliest Drop-off: 7:30 a.m.

Latest Pick-up: 4:15 p.m.

Latest Pick-up

(Extended Day): 6 p.m.

**School Uniform Color:**

White, Purple

**Choice Program Specialization:**  
Character, Leadership and Discipline  
Application required – see page 10.



## Young Men's Leadership Academy at Phillis Wheatley

415 Gabriel St., San Antonio, TX 78202 • (210) 354-9652 | [www.saisd.net/ymla](http://www.saisd.net/ymla)

The Young Men's Leadership Academy is San Antonio's first all-boys public school offering a model of education that is backed by research indicating that boys and girls learn differently. YMLA helps boys achieve their highest potential by setting high expectations and emphasizing character, leadership and discipline. Each day begins with a firm handshake and continues with a positive message of encouragement in a daily assembly. Our 21st-century school design fosters dialogue, promotes collaboration and encourages creativity. We build social-emotional awareness through reflective thinking practices and daily meditation sessions. We are preparing today's learners to become tomorrow's leaders.

♦ **ACADEMIC OFFERINGS:** Advanced Placement (AP), Gifted & Talented, Pre-AP, World Languages, Latin • Art, Choir, Theatre • Special Education: GEC

♦ **EXTRACURRICULAR ACTIVITIES:** Basketball, Cross Country, Football • ROTC • Karate, Robotics, Chess, Yearbook, Color Guard, Classic Society

♦ **EXTENDED DAY PARTNER:** Boys & Girls Club of San Antonio, Greater San Antonio After-School All-Stars

♦ **PARENT ORGANIZATION:** PTA

♦ **COMMUNITY PARTNERS:** Big Brothers, Omega Psi Phi Mentoring, Classical Society



## 2018 State Accountability Met Standard

**Distinction Designations:** Reading,  
Math, Science, Social Studies,  
Academic Growth,  
Closing Performance Gaps,  
Postsecondary Readiness

## School Start/End Times:

**8:30 a.m. - 3:45 p.m.**

Earliest Drop-off: 7:30 a.m.

Latest Pick-up: 5 p.m.

## School Uniform Color:

White, Red, Blue, Special uniform  
that includes a cardigan, plaid skirt,  
blouse & tie

**Choice Program Specialization:** Math,  
Science, Technology and Leadership.  
Application required – see page 10.



# Young Women's Leadership Academy • 6-12

2123 W. Huisache Ave., San Antonio, TX 78201 • (210) 438-6525 | [www.saisd.net/ywla](http://www.saisd.net/ywla)

At the Young Women's Leadership Academy, students engage in a rigorous, college preparatory curriculum with the understanding that 100 percent of students will graduate prepared to enroll in and graduate from college and be active leaders in their community. Academic offerings, including pre-AP and AP courses, boost students' overall competitiveness and challenge them to engage in deeper learning experiences in and out of the classroom. Academic and personal growth are targeted equally, with leadership development, service learning, and healthy decision-making woven into students' education. YWLA is committed to educating the whole child and in turn, developing the future leaders who will shape the world for the better.

♦ **ACADEMIC OFFERINGS:** Advanced Placement (AP), AVID, Dual Credit, Gifted & Talented, Pre-AP, STEAM, Engineering, Robotics, Computer Science, Covey's Habits, Leadership • IT, Computer Science and Programming • Art, Choir, Dance, Theatre • Special Education: PBIS

♦ **EXTRACURRICULAR ACTIVITIES:** Basketball, Cross Country, Soccer, Volleyball • Science Club, Venturing Club, Spanish Club, Chicano Literature Club, Drama Club, Girls' Giving Club, Gardening Club, ASL Club, Kindness Club, National Dance Honor Society, Photography Club, Technology Club, Tri-M National Music Honor Society, Middle School Robotics, High School Robotics, Yearbook Club, National Honor Society, National Junior Honor Society, Math Counts, Student Council, Journalism Club, Debate Club, Students Demand Action, National Junior Art Society, Science National Honor Society, National English Honor Society, Mu Alpha Theta, High School Drama Club, Girls Up, Young Poets Society, BIRDIE Pride, Transportation You, Medical Club, Gamma Sigma Girls, Academic Decathlon, National Art Honor Society, Women in Conservation, Fusion Club

♦ **EXTENDED DAY PARTNER:** YMCA of Greater San Antonio

♦ **PARENT ORGANIZATION:** Booster Club, PTSA

♦ **COMMUNITY PARTNERS:** Audubon Society, Young Women's Preparatory Network, The Magik Theatre, and Girls Inc. We also partner with local colleges and universities.



Breakfast



Lunch



Supper



Magnet Programs

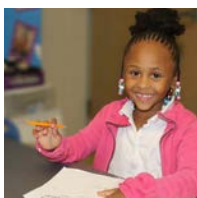


Dual Language



# EXPERIENCE SAISD ELEMENTARY SCHOOLS

- Arnold Elementary
- Barkley-Ruiz Elementary
- Baskin Elementary
- J.T. Brackenridge Elementary
- Briscoe Elementary
- Cameron Elementary
- Carvajal Elementary
- Collins Garden Elementary
- De Zavala Elementary
- Franklin Elementary
- Gates Elementary
- Graebner Elementary
- Highland Hills Elementary
- Highland Park Elementary
- Hillcrest Elementary
- Hirsch Elementary
- Huppertz Elementary
- Kelly Elementary
- Sarah King Elementary
- Lamar Elementary
- Madison Elementary
- Maverick Elementary
- Miller Elementary
- Neal Elementary
- Pershing Elementary
- Schenck Elementary
- Smith Elementary
- Democracy Prep at Stewart
- Storm Elementary
- Washington Elementary
- Wilson Elementary
- Woodlawn Hills Elementary
- YWLA Primary



Breakfast



Lunch



Supper



Magnet Programs



Dual Language



**PK-6**

**2018 State Accountability  
Met Standard**  
Distinction Designation: Science

**School Start/End Times:**  
**8 a.m. - 3:20 p.m.**

Earliest Drop-off: 7:30 a.m.  
Latest Pick-up: 3:30 p.m.  
Latest Pick-up  
(Extended Day): 6 p.m.

**School Uniform Color:**  
White, Green



## Charles A. Arnold Elementary School

467 Freiling Drive, San Antonio, TX 78213 • (210) 438-6530 | [www.saisd.net/arnoldes](http://www.saisd.net/arnoldes)

At Arnold Elementary School, we believe that high expectations are the key to student success. We provide our students with broadcast, media, and recycling opportunities that allow them to develop a sense of community and belonging. Our extracurricular offerings provide our students with opportunities to learn beyond the classroom. These programs give the students a sense of ownership in creating a safe, clean and orderly living environment. Our school educates all students, and our mission is to create life-long learners that are ready for the real world.

♦ **ACADEMIC OFFERINGS:** Gifted & Talented • Art, Choir, Music • Bilingual Education/Dual Language • Special Education: PBIS, ACE Unit

♦ **EXTRACURRICULAR ACTIVITIES:** Peer Assistance & Leadership (PALS), Student Safety Patrols, Chess Club, Broadcast & Media, Recycling Club

♦ **EXTENDED DAY PARTNER:** Challenge

♦ **PARENT ORGANIZATION:** Parent Volunteer Program



**PK-6**

**2018 State Accountability  
Met Standard**  
Distinction Designation: Science

**School Start/End Times:**  
**8:05 a.m. - 3:20 p.m.**

Earliest Drop-off: 7:15 a.m.  
Latest Pick-up: 4 p.m.  
Latest Pick-up  
(Extended Day): 4:15 p.m.

**School Uniform Color:**  
White, Red, Blue



## Barkley-Ruiz Elementary School

1111 S. Navidad St., San Antonio, TX 78207 • (210) 978-7940 | [www.saisd.net/barkleyruizes](http://www.saisd.net/barkleyruizes)

At Barkley-Ruiz Elementary, we believe we must teach students in the way that they learn best. Our school's primary focus is to identify learning-style preferences of each student in an effort to best meet their individual needs. Our teachers have attended the Ron Clark Academy and model their philosophy, where every employee is "...committed to fostering a dynamic, passionate learning environment where every child is valued, challenged, loved, and nurtured." Our Master Teachers service at-risk students while also mentoring peers to assure fidelity to best instructional practices.

♦ **ACADEMIC OFFERINGS:** Gifted & Talented • Art, Band, Choir, Step Club • Special Education: ACE, PBIS, SOLE

♦ **EXTRACURRICULAR ACTIVITIES:** Peer Assistance & Leadership (PALS), Yearbook, Step Club, Bluebonnet, Student Safety Patrols, Student Council

♦ **EXTENDED DAY PARTNER:** Boys & Girls Club of San Antonio



**PK-5**

**2018 State Accountability  
Met Standard**

**Distinction Designations:**  
Reading, Closing Performance  
Gaps, Postsecondary Readiness

**School Start/End Times:  
8 a.m. - 3:20 p.m.**

Earliest Drop-off: 6:45 a.m.  
Latest Pick-up: 3:20 p.m.  
Latest Pick-up  
(Extended Day): 6 p.m.

**School Uniform Color:**  
Blue



## Mildred Baskin Elementary School

630 Crestview Drive, San Antonio, TX 78201 • (210) 438-6535 | [www.saisd.net/baskines](http://www.saisd.net/baskines)

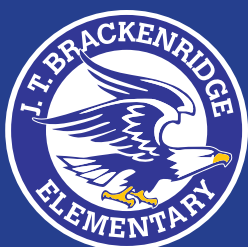
At Baskin Elementary, we believe in a quality, well-balanced curriculum that will give our students opportunities to learn about our world. We provide students with engaging, student-centered lessons that will develop life-long learners so that upon graduation they will feel empowered and equipped to pursue their dreams. We offer a variety of extracurricular programs that provide an extension of classroom learning to application in real-world experiences. Our school educates all students, providing gifted & talented and special education services to eligible students.

♦ **ACADEMIC OFFERINGS:** Gifted & Talented • Art, Choir, Music, Orchestra • Special Education: BSC, PBIS

♦ **EXTRACURRICULAR ACTIVITIES:** Robotics Club, Youth Literacy Team, Orchestra Strings, Recorder Club, Environmental Studies (Gardening), Peer Assistance & Leadership (PALS), Girl Scouts, Boy Scouts

♦ **EXTENDED DAY PARTNER:** Greater San Antonio After-School All-Stars

♦ **PARENT ORGANIZATION:** PTA



**PK-6**

**2018 State Accountability  
Met Standard**

**School Start/End Times:  
8 a.m. - 3:20 p.m.**

Earliest Drop-off: 7:30 a.m.  
Latest Pick-up: 3:30 p.m.  
Latest Pick-up  
(Extended Day): 5:30 p.m.

**School Uniform Color:**  
White, Black, Blue



## J.T. Brackenridge Elementary School

1214 Guadalupe St., San Antonio, TX 78207 • (210) 978-7950 | [www.saisd.net/jtbrackes](http://www.saisd.net/jtbrackes)

At J.T. Brackenridge Elementary, our Eagles are off and soaring, full speed ahead toward academic success. We believe Parents are Partners! We focus on our most critical work of providing children with the best education possible. Our motto is: Work Hard. Be Great. Have Heart! Here, your children are engaged in learning, and our teachers propel our scholars' academic growth and development to high levels. J.T. Brackenridge is here to serve our wonderful community. Additionally, we offer numerous exciting and innovative programs and activities for our students, parents, and families. Our staff members look forward to an active partnership between school, home, and community and recommends you keep up with us on Twitter: @JTBrackES\_SAISD

♦ **ACADEMIC OFFERINGS:** Gifted & Talented • Art, Band, Choir, Music • Bilingual Education/ Dual Language • Special Education: PBIS

♦ **EXTRACURRICULAR ACTIVITIES:** Girls on the Run Club, San Antonio Sports iPlay, Run Club

♦ **EXTENDED DAY PARTNER:** Boys & Girls Club of San Antonio

♦ **PARENT ORGANIZATION:** PTA

♦ **COMMUNITY PARTNERS:** Southwest School of Art KIDS Program, ESPERANZA Center, AVENIDA Guadalupe, Guadalupe Cultural Arts Center



Breakfast



Lunch



Supper



Magnet Programs



Dual Language



**PK-5**

**2018 State Accountability Improvement Required**

**School Start/End Times:**

**8:05 a.m. - 3:20 p.m.**

Earliest Drop-off: 7:15 a.m.

Latest Pick-up: 3:45 p.m.

Latest Pick-up

(Extended Day): 6 p.m.

**School Uniform Color:**

White, Green Yellow

**Choice Program Specialization:**

Global Interdisciplinary Learning

Application required - see page 10.



## Andrew Briscoe Elementary School

2015 S. Flores St., San Antonio, TX 78204 • (210) 228-3305 | [www.saisd.net/briscoees](http://www.saisd.net/briscoees)

At Briscoe Elementary School, we believe it is necessary to provide students with the tools and opportunities to take ownership of their learning and be contributors to the community and the world. It is imperative to develop intellectual thinkers who are academically successful and internationally minded. We provide students with authentic learning experiences that challenge students to become thinkers, inquirers, and reflective. Briscoe is a candidate school for the International Baccalaureate (IB) Primary Years Programme (PYP) and is pursuing authorization as an IB World School. The curriculum serves to prepare students seeking an IB education from elementary through high school. Following Briscoe, students may continue an IB education at Harris Middle School and Burbank High School.

♦ **ACADEMIC OFFERINGS:** International Baccalaureate (IB) Primary Years Programme candidate, Gifted & Talented • Spanish • Art, Choir, Music • Bilingual Education/Dual Language • Special Education: PBIS, PPCD

♦ **EXTRACURRICULAR ACTIVITIES:** Art Club, Crochet Club, Garden Club, Peer Assistance & Leadership (PALS), Student Safety Patrols, iPlay, and UIL

♦ **EXTENDED DAY PARTNER:** Boys & Girls Club of San Antonio, Greater San Antonio After-School All-Stars

♦ **COMMUNITY PARTNERS:** Communities in Schools, S.M.A.R.T, Ft. Sam Houston Medical Battalion, Hill Country Bakery, First Baptist Church - Briscoe Buddies, San Antonio Museum of Art, The McNay, The University of Texas at San Antonio, San Antonio Youth Literacy (SAYL), Boys & Girls Club of San Antonio, Mays Center



**PK-5**

**2018 State Accountability Met Standard**

**School Start/End Times:**

**8:05 a.m. - 3:20 p.m.**

Earliest Drop-off: 7:30 a.m.

Latest Pick-up: 3:45 p.m.

Latest Pick-up

(Extended Day): 4:45 p.m.

**School Uniform Color:**

Blue



## Bella Cameron Elementary School

3635 Belgium Lane, San Antonio, TX 78219 • (210) 978-7960 | [www.saisd.net/camerones](http://www.saisd.net/camerones)

At Cameron Elementary, we are dedicated to providing a safe, supportive, and quality education for all students to excel as life-long learners and productive citizens. We provide students with a well-rounded education with a focus on literacy and science and mathematical concepts. Our extracurricular programs encourage students to work together to attain a common goal and inspire students to strive for excellence. Our school educates all students, and our mission is to ensure all students are prepared to be contributing members of the community.

♦ **ACADEMIC OFFERINGS:** Art, Music • Special Education: ACE, PBIS, PPCD

♦ **EXTRACURRICULAR ACTIVITIES:** Student Safety Patrol, Choir

♦ **EXTENDED DAY PARTNER:** Boys & Girls Club of San Antonio

♦ **COMMUNITY PARTNERS:** Communities in School, Spurs Foundation, Bexar County Community Arenas, DelCrest Church of Christ, Get Up Ministries, Holy Redeemer, First Responders, Food Bank, Randolph Brooks, Superior Health Plans, Community First, First Responders, Bulverde Glass



**PK-5**

**2018 State Accountability**  
**NA**

**School Start/End Times:**  
**8:05 a.m. - 3:20 p.m.**  
Earliest Drop-off: 7:30 a.m.  
Latest Pick-up: 6 p.m.

**School Uniform Color:**  
Blue



**PK-5**

**2018 State Accountability**  
**Met Standard**

**School Start/End Times:**  
**8:05 a.m. - 3:20 p.m.**  
Earliest Drop-off: 7:15 a.m.  
Latest Pick-up: 3 p.m.  
Latest Pick-up  
(Extended Day): 4:45 p.m.

**School Uniform Color:**  
Blue



## Esther Perez Carvajal Elementary School

225 Arizona Ave., San Antonio, TX 78207 • (210) 978-7970 | [www.saisd.net/carvajales](http://www.saisd.net/carvajales)

At Carvajal Elementary School, we believe that a robust school sets a strong foundation for the students' educational journey. Teachers and staff are committed to instilling a love of learning in all domains, including social emotional, oral language, literacy, math, science, social studies, physical education and technology. We offer families the opportunity to choose a dual-language classroom, where our English-speaking children are taught side-by-side with our Spanish-speaking children. We are providing a program called Sanford Harmony, which provides teachers with tools to foster and support social connections among all students and to help develop positive peer relationships. Parents are a key component of our school success; we encourage all parents to volunteer and get involved by participating in our many events. We are excited to welcome the Rodriguez Elementary community to Carvajal. Together with parents, teachers, staff and community members, students will thrive and have a joyful school experience.

♦ **ACADEMIC OFFERINGS:** Head Start • Bilingual Education/Dual Language • Special Education • Gifted and Talented • Special Education: 504/Dyslexia

♦ **AFTER-SCHOOL PROGRAM PROVIDER:** SAISD Head Start, 21st Century After School Program

## Collins Garden Elementary School

167 Harriman Place, San Antonio, TX 78204 • (210) 228-3310 | [www.saisd.net/collinsgardenes](http://www.saisd.net/collinsgardenes)

At Collins Garden Elementary, we believe that every child should receive a well-rounded education, which is the foundation of learning and success. We are a Dual Language school hub focusing our efforts on implementing the most advanced and comprehensive bilingual education/dual language experience that supports the development of highly proficient biliterate individuals with cognitive metalinguistic skills. We provide students with a variety of extracurricular options and are in the process of expanding our extracurricular activities to reinforce further the excellent instruction that our students receive throughout the day and to extend their learning so they can thrive.

♦ **ACADEMIC OFFERINGS:** Gifted & Talented • Art, Music • Bilingual Education/Dual Language • Special Education: PBIS

♦ **EXTRACURRICULAR ACTIVITIES:** Chess Club, True Grit Physical Activity Club, Fuel Up to Play 60, Student Council, Gardening

♦ **EXTENDED DAY PARTNER:** Boys & Girls Club of San Antonio

♦ **PARENT ORGANIZATION:** PTA



Breakfast



Lunch



Supper



Magnet Programs



Dual Language



**PK-6**

**2018 State Accountability Improvement Required**

**School Start/End Times:**  
8:05 a.m. - 3:20 p.m.

Earliest Drop-off: 7:30 a.m.

Latest Pick-up: 3:30 p.m.

Latest Pick-up

(Extended Day): 4:45 p.m.

**School Uniform Color:**

White, Blue



## Lorenzo De Zavala Elementary School

2311 San Luis St., San Antonio, TX 78207 • (210) 978-7975 | [www.saisd.net/dezavalaes](http://www.saisd.net/dezavalaes)

De Zavala Elementary prides itself on wonderful traditions and collaborative learning. We are a campus that welcomes special events throughout the year. This year, we are focusing on involving our parents and community in our school. Our committed parent family liaison engages with parents throughout the school year, sharing opportunities for parents to be a part of the learning community. We encourage all parents to help make our campus an inviting place to learn. We are proud to be a part of the De Zavala team and look forward to moving our campus toward continued success. At De Zavala, we believe working together and supporting one another through a close partnership is an essential factor in creating a wonderful learning community.

♦ **ACADEMIC OFFERINGS:** Gifted & Talented • Art, Choir, Music • Bilingual Education/Dual Language • Special Education: BSC, Bilingual PPCD, PBIS, PPCD

♦ **EXTRACURRICULAR ACTIVITIES:** Peer Assistance & Leadership (PALS), Student Safety Patrol, Book Club

♦ **EXTENDED DAY PARTNER:** Boys & Girls Club of San Antonio

♦ **COMMUNITY PARTNERS:** San Antonio Youth Literacy (SAYL)



**PK-5**

**2018 State Accountability Met Standard**

**School Start/End Times:**  
8:05 a.m. - 3:20 p.m.

Earliest Drop-off: 7:30 a.m.

Latest Pick-up: 3:20 p.m.

Latest Pick-up

(Extended Day): 6 p.m.

**School Uniform Color:**

White, Blue



## Benjamin Franklin Elementary School

1915 W. Olmos Drive, San Antonio, TX 78201 • (210) 738-9790 | [www.saisd.net/franklines](http://www.saisd.net/franklines)

At Benjamin Franklin Elementary, we believe our students will become lifelong learners and pursue higher education beyond high school; creating confident, compassionate and productive citizens. We provide our students with an opportunity to grow academically as well as socially due to our highly qualified faculty and staff. We engage our families in order to assist with the child's education so that they can flourish to the utmost of their abilities. Our extracurricular offerings together with our rigorous instruction creates an environment for Franklin students to succeed. Our school educates all students, providing bilingual education/dual language, special education, and gifted & talented services to eligible students.

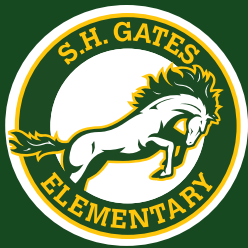
♦ **ACADEMIC OFFERINGS:** Gifted & Talented • Art, Music • Bilingual Education/Dual Language • Special Education: ACE, PBIS

♦ **EXTRACURRICULAR ACTIVITIES:** Mini GEMS STEM (girls in 5th), Peer Assistance & Leadership (PALS), Student Safety Patrols, Choir

♦ **EXTENDED DAY PARTNER:** Greater San Antonio After-School All-Stars

♦ **PARENT ORGANIZATION:** PTA

♦ **COMMUNITY PARTNERS:** The University of Texas at San Antonio Support and Enrichment Experience in Math (SEE)



**PK-6**

**2018 State Accountability  
Met Standard**

**Distinction Designations:** Math,  
Science, Closing Performance  
Gaps, Postsecondary Readiness

**School Start/End Times:  
8:05 a.m. - 3:20 p.m.**

Earliest Drop-off: 7:30 a.m.

Latest Pick-up: 3:30 p.m.

Latest Pick-up

(Extended Day): 4:20 p.m.

**School Uniform Color:**

White, Green, Yellow



## Samuel Houston Gates Elementary School

510 Morningview Drive, San Antonio, TX 78220 • (210) 738-9780 | [www.saisd.net/gateses](http://www.saisd.net/gateses)

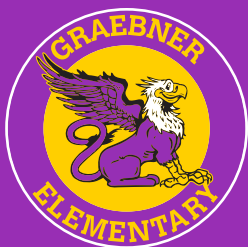
Gates Elementary School is a student-centered neighborhood school focused on building a love for learning. We continue to reach, strive and grow daily. At Gates, we believe in implementing data-based instructional strategies. Our English language arts program is a balanced literacy program that encompasses guided reading, writing, phonemic awareness, and self-selected reading. Our literacy initiative for grades PK-3 enables direct, guided and differentiated instruction. Additionally, we are proud to offer a comprehensive and hands-on math program. The extracurricular activities offered at Gates motivate our students to grow into productive members of society. Our school educates all students, providing special education and gifted and talented services to eligible students.

♦ **ACADEMIC OFFERINGS:** Gifted & Talented • Special Education: ACE, PBIS

♦ **EXTRACURRICULAR ACTIVITIES:** Peer Assistance & Leadership (PALS) • Book Club

♦ **EXTENDED DAY PARTNER:** Boys and Girls Club of San Antonio

♦ **COMMUNITY PARTNERS:** NAACP Women, Reach Ministry, Gospel 1480 Radio Station, Emmanuel Baptist Church, Mittman Street Diner, Mr. and Mrs. G's, HEB, Taco Cabana, Whataburger, AT&T Center, Spurs Foundation, Starlight Baptist Church, Starbucks



**PK-5**

**2018 State Accountability  
Met Standard**

**Distinction Designation:**  
Academic Growth

**School Start/End Times:  
8 a.m. - 3:20 p.m.**

Earliest Drop-off: 7:30 a.m.

Latest Pick-up: 4 p.m.

Latest Pick-up

(Extended Day): 6 p.m.

**School Uniform Color:**

White, Yellow, Purple



## Charles Graebner Elementary School

530 Hoover Ave., San Antonio, TX 78225 • (210) 228-3320 | [www.saisd.net/graebnere](http://www.saisd.net/graebnere)

At Graebner Elementary, we believe in the success and potential of each one of our students and prepare them to become tomorrow's leaders. Come and join our legacy by visiting our website and becoming involved in our school. Our diverse extracurricular offerings provide leadership skills and community outreach services. Our school educates all students, providing bilingual education/dual language, special education, and gifted & talented services to eligible students.

♦ **ACADEMIC OFFERINGS:** Gifted & Talented, Bilingual Education/Dual Language • Art, Choir, Mariachi • Dual Language • Special Education: ACE, PBIS

♦ **EXTRACURRICULAR ACTIVITIES:** Brotherhood, She Is (Girls Club), Peer Assistance & Leadership (PALS), Student Safety Patrols, Choir Club, Art Club, Music Club, National Junior Honor Society (NJHS), Science, Mariachi, Library Helpers

♦ **EXTENDED DAY PARTNER:** YMCA of Greater San Antonio

♦ **PARENT ORGANIZATION:** PTA



Breakfast



Lunch



Supper



Magnet Programs



Dual Language



# PK-5

## 2018 State Accountability Met Standard

### Distinction Designations:

Academic Growth,  
Closing Performance Gaps

### School Start/End Times:

**8 a.m. - 3:20 p.m.**

Earliest Drop-off: 7:15 a.m.

Latest Pick-up: 3:40 p.m.

Latest Pick-up

(Extended Day): 6 p.m.

### School Uniform Color:

Blue, Yellow



## Highland Hills Elementary School

734 Glamis Ave., San Antonio, TX 78223 • (210) 438-6860 | [www.saisd.net/highlandhillses](http://www.saisd.net/highlandhillses)

At Highland Hills Elementary, we work to create a culture that reflects a positive, safe environment, involving all staff and families to play a role in helping students become productive citizens. Our core belief is that all students can learn at high levels. We seek to know each of our students completely both as people and learners in order to provide students with the tools to excel both academically and socially. Our teachers are trained to offer a curriculum that meets the needs of and encourages the growth of all our students through problem-solving and small group projects. Hands-on experiences motivate and teach our children using research-based practices that build confidence, independence, teamwork, and responsibility. Encouragement of "thinking outside the box" is important to us if our students are to be successful in 21st-century jobs.

♦ **ACADEMIC OFFERINGS:** Gifted & Talented • Art, Music, Orchestra • Bilingual Education/Dual Language • Special Education: PBIS, General Education Connection & Dyslexia Interventions

♦ **EXTRACURRICULAR ACTIVITIES:** Peer Assistance & Leadership (PALS), Ballet Folklorico (1st-2nd), Honor Choir (4th-5th), Art Club, Chess Club

♦ **EXTENDED DAY PARTNER:** Greater San Antonio After-School All-Stars

♦ **PARENT ORGANIZATION:** PTA

♦ **COMMUNITY PARTNERS:** HEB, Presa Community Center



# PK-6

## 2018 State Accountability Met Standard

### Distinction Designations:

Math,  
Science, Academic Growth,  
Closing Performance Gaps,  
Postsecondary Readiness

### School Start/End Times:

**8:05 a.m. - 3:20 p.m.**

Earliest Drop-off: 7:15 a.m.

Latest Pick-up: 4 p.m.

Latest Pick-up

(Extended Day): 5:30 p.m.

### School Uniform Color:

Green, Gold



## Highland Park Elementary School

635 Rigsby Ave., San Antonio, TX 78210 • (210) 228-3335 | [www.saisd.net/highlandparkes](http://www.saisd.net/highlandparkes)

Highland Park Elementary staff members ensure that learning is challenging, stimulating and fun in the quest to shape independent, lifelong learners. Students are challenged daily to gain a deeper understanding of concepts and connect what they learn to their everyday lives. Teachers at Highland Park continue to provide rigorous instruction ensuring that each student achieves at least a year's academic growth in both reading and math.

♦ **ACADEMIC OFFERINGS:** Art, Music • Bilingual Education/Dual Language • Special Education: ACE, BSC

♦ **EXTRACURRICULAR ACTIVITIES:** Choir, Running Club, Student Safety Patrols, STUCO 5, Gardening, Beautification Club, GT Clubs, ART/Writing Club, Just Dance, Recycling, Games Club

♦ **EXTENDED DAY PARTNER:** Challenge

♦ **PARENT ORGANIZATION:** Proposing a parent organization for 2018-19 school year

♦ **COMMUNITY PARTNERS:** Rainbow Bakery, Chick-Fil-A, Peter Piper Pizza, Forrester Financial, Fraternal Financial, Jimmy Johns, City of San Antonio Metropolitan Health District, San Antonio Heals, Food Bank, National School Week, Redeemer Presbyterian Church, Irma's Angels, San Antonio Fire Department, New Birth Missionary Baptist Church, Urban 15 Group, Assistance League of San Antonio, Mrs. Bairds, San Antonio Area Retired Teachers Association (SAARTA), Troop 300, The Smile Center, Acadian Ambulance



**PK-5**

**2018 State Accountability  
Met Standard**

**School Start/End Times:  
8:05 a.m. - 3:20 p.m.**

Earliest Drop-off: 7:30 a.m.

Latest Pick-up: 3:35 p.m.

Latest Pick-up

(Extended Day): 6 p.m.

**School Uniform Color:  
Maroon**



## Hillcrest Elementary School

211 W. Malone Ave., San Antonio, TX 78214 • (210) 228-3340 | [www.saisd.net/hillcrestes](http://www.saisd.net/hillcrestes)

At Hillcrest Elementary, we believe in providing a quality education where students become passionately engaged learners, productive members of society and well-rounded, problem-solving individuals. We will achieve this through dynamic teaching, effective modeling, providing ample opportunities and acknowledging their talents and achievements. We provide students with opportunities to participate in our extracurricular programs which provides them with the opportunity to extend their learning outside of the classroom. Our school educates all students, providing bilingual education/dual language, special education, and gift & talented services to eligible students.

♦ **ACADEMIC OFFERINGS:** Gifted & Talented • Art, Choir • Bilingual Education/Dual Language • Special Education: ACE, BCM, BSC, PBIS

♦ **EXTRACURRICULAR ACTIVITIES:** Robotics with The University of Texas at San Antonio, Peer Assistance & Leadership (PALS)/STUCO

♦ **EXTENDED DAY PARTNER:** Boys & Girls Club of San Antonio, Greater San Antonio After-School All-Stars

♦ **COMMUNITY PARTNERS:** San Antonio Youth Literacy (SAYL)



**PK-5**

**2018 State Accountability  
Improvement Required**

**School Start/End Times:  
8:10 a.m. - 3:20 p.m.**

Earliest Drop-off: 7:30 a.m.

Latest Pick-up: 3:40 p.m.

Latest Pick-up

(Extended Day): 4:30 p.m.

**School Uniform Color:  
Green, Yellow**



## Herman Hirsch Elementary School

4826 Seabreeze Drive, San Antonio, TX 78220 • (210) 978-7985 | [www.saisd.net/hirsches](http://www.saisd.net/hirsches)

At Herman Hirsch Elementary, we strive to build a nurturing, engaging learning environment where teachers, staff, parents and community members work collaboratively to ensure student success. We are committed to creating a safe learning environment that facilitates a community of lifelong learners and a future generation of leaders, through rigorous instruction with high expectations in order to optimize students' fullest potential. We provide students with extracurricular opportunities that round out their educational experience, supporting and strengthening classroom learning. We are dedicated to meeting the needs – academic, physical, social and emotional – of the child. We will empower students by providing a rigorous and motivating atmosphere that recognizes diversity.

♦ **ACADEMIC OFFERINGS:** Art, Choir, String Program • Special Education: ACE, BCM, BSC, PBIS, PPCD

♦ **EXTRACURRICULAR ACTIVITIES:** Chess Club, Art Club, Student Safety Patrols, Peer Assistance & Leadership (PALS), Breakfast Club, Run Club, Strings Club

♦ **EXTENDED DAY PARTNER:** Boys & Girls Club of San Antonio

♦ **PARENT ORGANIZATION:** Family Services/United Way Parent Room

♦ **COMMUNITY PARTNERS:** San Antonio Youth Literacy (SAYL)



Breakfast



Lunch



Supper



Magnet Programs



Dual Language



PK-5

**2018 State Accountability  
Met Standard**

**School Start/End Times:  
8:05 a.m. - 3:20 p.m.**

Earliest Drop-off: 7:30 a.m.

Latest Pick-up: 3:40 p.m.

Latest Pick-up

(Extended Day): 6:20 p.m.

**School Uniform Color:**

White, Blue, Green



## Mary Frances Huppertz Elementary School

247 Bangor Drive, San Antonio, TX 78228 • (210) 438-6580 | [www.saisd.net/huppertz](http://www.saisd.net/huppertz)

At Huppertz Elementary, we believe that every student can learn and achieve success at a high level. Our dedicated staff promotes this expectation by instilling high levels of critical thinking and application of learning to both future knowledge acquisition (transfer knowledge) and their lives outside the classroom (application to real-world scenarios). In addition, we are a candidate for the International Baccalaureate (IB) Primary Years Programme (PYP) and provide the AVID program. These offerings aim to develop inquiring, knowledgeable and caring young people who help to create a better and more peaceful world through intercultural understanding and respect. We aim to close the opportunity gap so that we can prepare all students for college, careers, and life. At Huppertz Elementary, we stand for excellence, honor, and pride.

♦ **ACADEMIC OFFERINGS:** International Baccalaureate (IB) Primary Years Programme (PYP) candidate, AVID, Gifted & Talented • Art, Music • Special Education: BSC, Positive Behavior Interventions and Support (PBIS), PPCD

♦ **EXTRACURRICULAR ACTIVITIES:** Chess Club, Environmental Club, Robotics, Art Club, Student Council

♦ **EXTENDED DAY PARTNER:** Greater San Antonio After-School All-Stars

♦ **PARENT ORGANIZATION:** PTA

♦ **COMMUNITY PARTNERS:** Junior Achievement, The University of Texas at San Antonio, St. Mary's University



PK-5

**2018 State Accountability  
Met Standard**

**Distinction Designations:**

Academic Growth,

Postsecondary Readiness

**School Start/End Times:  
8:05 a.m. - 3:20 p.m.**

Earliest Drop-off: 7:20 a.m.

Latest Pick-up: 3:30 p.m.

Latest Pick-up

(Extended Day): 4:30 p.m.

**School Uniform Color:**

Green



## George E. Kelly Elementary School

1026 W. Thompson Place, San Antonio, TX 78226 • (210) 228-3350 | [www.saisd.net/kellyes](http://www.saisd.net/kellyes)

At Kelly Elementary, we believe that all students have the opportunity to learn successfully. We provide students with an educational experience that will produce productive global citizens. We are a community that sets high expectations and offer the opportunity for students to engage in a variety of extracurricular activities that nurture their interests.

♦ **ACADEMIC OFFERINGS:** Gifted & Talented • Choir • Special Education: ACE, PBIS

♦ **EXTRACURRICULAR ACTIVITIES:** Peer Assistance and Leadership (PAL's), Fitness Club, UIL, Student Council, Student Safety Patrols

♦ **EXTENDED DAY PARTNER:** Boys & Girls Club of San Antonio

♦ **PARENT ORGANIZATION:** PTA

♦ **COMMUNITY PARTNERS:** Boeing, Marriott, San Antonio Youth Literacy (SAYL)



**PK-5**

**2018 State Accountability  
Met Standard**

**School Start/End Times:**  
**8:05 a.m. - 3:20 p.m.**

Earliest Drop-off: 7:25 a.m.

Latest Pick-up: 3:40 p.m.

Latest Pick-up

(Extended Day): 4:50 p.m.

**School Uniform Color:**  
White, Green



## Sarah S. King Elementary School

1001 Ceralvo St., San Antonio, TX 78207 • (210) 978-7990 | [www.saisd.net/kinges](http://www.saisd.net/kinges)

At Sarah King Elementary School, we believe we are preparing a new generation of students to become innovative leaders. We provide students with a quality education and programming that prepares them for graduation and success in higher education. Our extracurricular offerings promote a culture of excellence and high expectations with a focus on preparing students to be contributing members of the community. Our school educates all students, providing bilingual education/dual language, special education and gifted & talented services to eligible students.

♦ **ACADEMIC OFFERINGS:** Gifted & Talented • Art, Choir • Bilingual Education/Dual Language • Special Education: ACE, PPCD

♦ **EXTRACURRICULAR ACTIVITIES:** Art Club, Cheer, Leadership Club, Spanish Club, Student Safety Patrols, Science Club, Student Council

♦ **EXTENDED DAY PARTNER:** YMCA of Greater San Antonio

♦ **PARENT ORGANIZATION:** PTA

♦ **COMMUNITY PARTNERS:** City Year



**PK-6**

**2018 State Accountability  
Met Standard**

**School Start/End Times:**  
**8 a.m. - 3:35 p.m.**

Earliest Drop-off: 7:15 a.m.

Latest Pick-up: 3:35 p.m.

Latest Pick-up

(Extended Day): 6 p.m.

**School Uniform Color:**  
White, Blue, Yellow

**Choice Program Specialization:** Project-Based Learning, Social-Emotional Learning, Dual Language, Extended School Year  
Application required – see page 10.



## Mirabeau B. Lamar Elementary School

201 Parland Place, San Antonio, TX 78209 • (210) 738-9800 | [www.saisd.net/lamares](http://www.saisd.net/lamares)

At Lamar Elementary, we believe that every student can achieve whatever they set their heart and mind to, and it is our responsibility to position them for success in school and in life. We provide students with a rounded educational experience focused on developing the social, emotional, and academic skills of every child. Our staff believes that is our mission to meet the varied and unique needs of every child every day. Our class curriculum focuses on project-based learning, social-emotional learning, bilingual education/dual language (starting in kindergarten), and an extended school year. These programs develop the belief that we cannot just teach curriculum at our school, we must customize a school experience for all students.

♦ **ACADEMIC OFFERINGS:** Adjusted Calendar • Gifted & Talented • Art, Band, Choir, Music • Bilingual Education/Dual Language • Special Education: ACE, PBIS

♦ **EXTRACURRICULAR ACTIVITIES:** Robotics, Coding, Gardening, Arts, UIL

♦ **EXTENDED DAY PARTNER:** Boys & Girls Club of San Antonio

♦ **PARENT ORGANIZATION:** PTA

♦ **COMMUNITY PARTNERS:** First Baptist Church, Grace Fellowship, Snack Packs, Witte Museum, Botanical Garden, DoSeum, San Antonio Museum of Art



Breakfast



Lunch



Supper



Magnet Programs



Dual Language



**PK-5**

**2018 State Accountability  
Met Standard**

**School Start/End Times:**  
**7:45 a.m. - 3:20 p.m.**

Earliest Drop-off: 7:15 a.m.

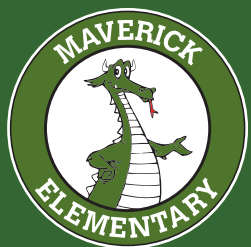
Latest Pick-up: 3:40 p.m.

Latest Pick-up

(Extended Day): 6 p.m.

**School Uniform Color:**

White, Blue



**PK-5**

**2018 State Accountability  
Met Standard**

**School Start/End Times:**  
**8:05 a.m. - 3:20 p.m.**

Earliest Drop-off: 7:15 a.m.

Latest Pick-up: 3:30 p.m.

Latest Pick-up

(Extended Day): 6:15 p.m.

**School Uniform Color:**

White, Green



## James Madison Elementary School

2900 W. Woodlawn Ave., San Antonio, TX 78228 • (210) 438-6545 | [www.saisd.net/madisones](http://www.saisd.net/madisones)

At Madison Elementary, we believe that all students are capable of learning and becoming well-rounded individuals. We provide students with enhanced learning through hands-on projects, ability grouping, and technology-based lessons. Our extracurricular offerings and campus programs allow students to transfer in class learning to real-world application. Our school educates all students, providing bilingual education/dual language, bilingual, special education and gifted & talented services to eligible students.

♦ **ACADEMIC OFFERINGS:** Gifted & Talented • Art, Choir, Music • Bilingual Education/Dual Language • Special Education: ACE, PPCD

♦ **EXTRACURRICULAR ACTIVITIES:** Student Safety Patrols, Drumline Club, Art Club, Book Club, Watch Dogs Program

♦ **EXTENDED DAY PARTNER:** Boys & Girls Club of San Antonio

♦ **PARENT ORGANIZATION:** PTO

♦ **COMMUNITY PARTNERS:** Christ Episcopal Church, The University of Texas at San Antonio, St. Mary's, Our Lady of the Lake University (OLLU), San Antonio Youth Literacy, District 7 Summer Snack Pack Program, Attendance Incentive Bike Give-Away

## Samuel A. Maverick Elementary School

107 Raleigh Place, San Antonio, TX 78201 • (210) 438-6550 | [www.saisd.net/maverickes](http://www.saisd.net/maverickes)

At Maverick Elementary School, we foster a community of learning that is student-centered. Through collaboration with stakeholders, we cultivate our students holistically to become productive members of the community. We provide students with a variety of extracurricular options that allow them to explore the activities that best fit their interests. These programs align with our academic goals and help develop well-rounded students. Our school educates all students, providing bilingual education/dual language, special education, and gifted & talented services to eligible students.

♦ **ACADEMIC OFFERINGS:** Gifted & Talented • Art, Choir, Music • Bilingual Education/Dual Language • Special Education: ACE, PBIS, PPCD

♦ **EXTRACURRICULAR ACTIVITIES:** Girls on the Run, Dragon Network News (DNN), Book Club, Basketball Club, Peer Assistance & Leadership (PALS), Mindfulness Club, ECO/Recycle Team, Student Safety Patrols

♦ **EXTENDED DAY PARTNER:** Greater San Antonio After-School All-Stars

♦ **PARENT ORGANIZATION:** PTA

♦ **COMMUNITY PARTNERS:** PepsiCo., San Antonio Youth Literacy (SAYL), University of Texas at San Antonio, Southwest School of Art, San Antonio OASIS, Morningside Ministries at The Manor, Junior Achievement, HEB, Northwest Lions Club of San Antonio



**PK-5**

**2018 State Accountability  
Met Standard**

**School Start/End Times:**  
**8 a.m. - 3:50 p.m.**

Earliest Drop-off: 7:30 a.m.

Latest Pick-up: 3:50 p.m.

Latest Pick-up

(Extended Day): 6:20 p.m.

**School Uniform Color:**  
Navy Blue



## Dorie Miller Elementary School

207 Lincolnshire Drive, San Antonio, TX 78220 • (210) 978-7995 | [www.saisd.net/milleres](http://www.saisd.net/milleres)

At Miller Elementary, we believe that every community deserves a school where students are given the opportunity to learn and grow. We provide students with learning opportunities to meet individual learning needs. We offer extended day learning opportunities for students with 150 minutes per week of extra instructional time. Our teachers use technology, flexible furniture, and student grouping to cater to our students' learning styles. We have a team of instructional and technology specialists to provide in-class support to students and teachers. We offer clubs and individualized tutoring before and after school to every student. Miller educates all students, providing bilingual education/dual language, special education, accelerated programming, and gifted & talented services to eligible students.

♦ **ACADEMIC OFFERINGS:** Gifted & Talented • Art, Choir, Music • Bilingual Education/Dual Language • Special Education: ACE

♦ **EXTRACURRICULAR ACTIVITIES:** Student Council, Scrabble Club, American Heroes Club, Art Club, STEM Enrichment, Blue Ribbon Book Club

♦ **EXTENDED DAY PARTNER:** Greater San Antonio After-School All-Stars

♦ **COMMUNITY PARTNERS:** San Antonio Rotary, Councilman Shaw, Communities in Schools, The University of Texas at San Antonio mentors



**PK-5**

**2018 State Accountability  
Met Standard**

**School Start/End Times:**  
**8 a.m. - 3:20 p.m.**

Earliest Drop-off: 7:15 a.m.

Latest Pick-up: 3:45 p.m.

Latest Pick-up

(Extended Day): 6 p.m.

**School Uniform Color:**  
White, Black, Green, Yellow



## Elma A. Neal Elementary School

3407 Capitol Ave, San Antonio, TX 78201 • (210) 738-9810 | [www.saisd.net/neales](http://www.saisd.net/neales)

At Elma Neal Elementary, we believe that passionate, highly effective, reflective teachers partnered with an actively involved community can motivate and support all learners in achieving their fullest potential. We are relentless in the pursuit of our mission to mold students to become self-motivated learners. Neal provides students with a multicultural education which reflects the diversity of our city. Our extracurricular offerings foster pupils' interest and creativity and provide a foundation for students to become empathetic, critical thinking problem solvers. Our school educates all, providing bilingual education/dual language, special education and gifted & talented services to eligible students.

♦ **ACADEMIC OFFERINGS:** Gifted & Talented • Art, Choir, Music • Bilingual Education/Dual Language • Special Education: BSC, PBIS

♦ **EXTRACURRICULAR ACTIVITIES:** Peer Assistance & Leadership (PALS), Peer Mediation, Boy Scouts, Poetry/Book Club

♦ **EXTENDED DAY PARTNER:** YMCA of Greater San Antonio

♦ **PARENT ORGANIZATION:** PTA

♦ **COMMUNITY PARTNERS:** San Antonio Youth Literacy, Junior Achievers, Fort Sam



Breakfast



Lunch



Supper



Magnet Programs



Dual Language



**PK-6**

**2018 State Accountability  
Met Standard**

**School Start/End Times:**  
**8:05 a.m. - 3:20 p.m.**

Earliest Drop-off: 7:30 a.m.

Latest Pick-up: 3:30 p.m.

Latest Pick-up

(Extended Day): 6 p.m.

**School Uniform Color:**  
White, Green



## John J. Pershing Elementary School

600 Sandmeyer St., San Antonio, TX 78208 • (210) 738-9820 | [www.saisd.net/pershinges](http://www.saisd.net/pershinges)

At Pershing Elementary, we work collaboratively as a team, involving faculty, staff, parents and the community to reach our goals. The success of our school is a product of collaboration, high expectations, and ownership. The Pershing team shares in our beliefs and core values: respect, commitment, high expectations, passion, teamwork, integrity and student-centered. Our school provides support for all students including English learners, gifted & talented and students receiving special education services. At Pershing, we truly believe that it takes a village to raise a child and it takes a collective effort of faculty, staff, students, families and the community to support the growth in achievement we want to see in our students.

♦ **ACADEMIC OFFERINGS:** Gifted & Talented • Art, Band, Choir, Music • Bilingual Education/Dual Language • Special Education: BSC, PBIS

♦ **EXTRACURRICULAR ACTIVITIES:** Master Teacher Program

♦ **EXTENDED DAY PARTNER:** YMCA of Greater San Antonio

♦ **PARENT ORGANIZATION:** Family Services Parent Room

♦ **COMMUNITY PARTNERS:** Communities in Schools, Pearl Street Church, Fort Sam Houston Army North, Pearson



**PK-5**

**2018 State Accountability  
Met Standard**  
**Distinction Designation:** Reading

**School Start/End Times:**  
**8:05 a.m. - 3:20 p.m.**

Earliest Drop-off: 7:15 a.m.

Latest Pick-up: 3:30 p.m.

Latest Pick-up

(Extended Day): 6 p.m.

**School Uniform Color:**  
White, Black, Gray, Khaki, Maroon



## Kate Schenck Elementary School

101 Kate Schenck Ave., San Antonio, TX 78223 • (210) 438-6865 | [www.saisd.net/schenckes](http://www.saisd.net/schenckes)

Schenck Elementary School is a neighborhood school that provides a safe and caring environment where all students are capable of learning at high levels. Our teachers deliver research-based strategies that make learning FUN! We offer a student-centered instructional approach that encourages collaboration and critical thinking. We provide special education, gifted & talented classes, and an extended day instructional program. Students may join the UIL team and compete in a variety of events with students all around San Antonio. These programs provide students with an opportunity to explore new hobbies, support and strengthen their classroom learning, and develop life-long skills.

♦ **ACADEMIC OFFERINGS:** Gifted & Talented • Art, Choir • Bilingual Education/Dual Language • Special Education: ACE, PBIS, PPCD

♦ **EXTRACURRICULAR ACTIVITIES:** Peer Assistance & Leadership (PALS), Student Safety Patrols, EcoChicos, Chess Club, Cooking Club, Book Club, Photography Club, Runner's Club, UIL Competitive Team

♦ **EXTENDED DAY PARTNER:** Boys & Girls Club of San Antonio

♦ **PARENT ORGANIZATION:** PTA

♦ **COMMUNITY PARTNERS:** Communities in Schools, ESL for Adults



**PK-6**

**2018 State Accountability  
Met Standard**

**Distinction Designations:** Math,  
Science, Academic Growth

**School Start/End Times:  
8:05 a.m. - 3:20 p.m.**

Earliest Drop-off: 7:30 a.m.

Latest Pick-up: 3:20 p.m.

Latest Pick-up

(Extended Day): 6:20 p.m.

**School Uniform Color:**

White, Blue, Yellow



## John W. and Erastus Smith Elementary School

823 S. Gevers St., San Antonio, TX 78203 • (210) 228-3360 | [www.saisd.net/smithes](http://www.saisd.net/smithes)

At Smith Elementary School, we believe in cooperative learning, setting goals, providing feedback, reinforcing effort, and giving praise. All teaching is aligned with the SAISD mission statement, which is to transform SAISD into a national model urban school district where every child graduates and is educated so that they are prepared to be a contributing member of the community. We provide students with a traditional experience that is nurturing and engaging. Our extracurricular offerings support your child by engaging student learning. Our school educates all students, providing, bilingual education/dual language classrooms, special education, gifted & talented, and Get Set services to eligible students.

♦ **ACADEMIC OFFERINGS:** Gifted & Talented • Art, Music • Bilingual Education/Dual Language, Bilingual for 3rd-5th grades • Special Education: BSC, PBIS, Get Set

♦ **EXTRACURRICULAR ACTIVITIES:** Ballet Folklorico, Tiger Spirit Squad, Safety Patrol, Reading Club, Newspaper

♦ **EXTENDED DAY PARTNER:** Challenge

♦ **PARENT ORGANIZATION:** PTA

♦ **COMMUNITY PARTNERS:** Presa Community Center



**PK-5**

**2018 State Accountability  
Met Standard**

**Distinction Designation:**  
Academic Growth

**School Start/End Times:  
7:45 a.m. - 3:45 p.m.**

Earliest Drop-off: 7:15 a.m.

Latest Pick-up: 4 p.m.

Latest Pick-up

(Extended Day): 6 p.m.

**School Uniform Color:**

Blue, Yellow



## Democracy Prep Stewart Elementary School

1950 Rigsby Ave., San Antonio, TX 78210 • (210) 438-6875 | [www.saisd.net/stewartes](http://www.saisd.net/stewartes)

At Democracy Prep Stewart, we believe that all students have unlimited potential. Our mission is to educate responsible citizen-scholars for success in a college of their choice and a life of active citizenship. At our Stewart Campus, we provide students with a rigorous, college-prep academic program along with co-curriculars that will help students become better learners.

♦ **ACADEMIC OFFERINGS:** Government and Law • Advanced Placement (AP), Dual Credit, Pre-AP, World Languages • Art, Theater • Bilingual Education/Dual Language • Special Education: PBIS

♦ **EXTRACURRICULAR ACTIVITIES:** Girls on the Run, Drama Club

♦ **EXTENDED DAY PARTNER:** Greater San Antonio After-School All-Stars

♦ **PARENT ORGANIZATION:** PTO

♦ **COMMUNITY PARTNERS:** Communities in Schools



Breakfast



Lunch



Supper



Magnet Programs



Dual Language



**PK-5**

**2018 State Accountability  
Met Standard**

**School Start/End Times:**  
**7:30 a.m. - 4 p.m.**

Earliest Drop-off: 7:25 a.m.

Latest Pick-up: 4:45 p.m.

Latest Pick-up

(Extended Day): 6 p.m.

**School Uniform Color:**  
White, Green



## Ollie Perry Storm Elementary School

435 Brady Blvd., San Antonio, TX 78207 • (210) 978-8005 | [www.saisd.net/stormes](http://www.saisd.net/stormes)

At Storm Elementary, we believe students deserve personalized instruction that targets their individual needs. We provide every student with a Chromebook loaded with a variety of digital tools designed to create small-group learning communities in each subject throughout the school day. In addition, our school has a lead teacher and a resident in 15 of our classrooms. The combination of digital learning tools, two teachers in each classroom and an extended school day allows teaching and learning at Storm to take a creative and distinct approach designed to have the most significant impact on student learning. Our school culture combined with our structured learning model is setting the foundation for our scholars to be college ready.

- ♦ **ACADEMIC OFFERINGS:** Art • Special Education: BSC
- ♦ **EXTRACURRICULAR ACTIVITIES:** Art Club, Fitness Program
- ♦ **EXTENDED DAY PARTNER:** Boys & Girls Club of San Antonio
- ♦ **COMMUNITY PARTNERS:** Yes Our Kids Can, Relay Lab Schools



**PK-6**

**2018 State Accountability  
Improvement Required**

**School Start/End Times:**  
**8:05 a.m. - 3:20 p.m.**

Earliest Drop-off: 7:30 a.m.

Latest Pick-up: 3:20 p.m.

Latest Pick-up

(Extended Day): 6 p.m.

**School Uniform Color:**  
White, Blue



## Booker T. Washington Elementary School

1823 Nolan St., San Antonio, TX 78202 • (210) 738-9840 | [www.saisd.net/washingtones](http://www.saisd.net/washingtones)

At Washington Elementary, we believe all students should have access to a rigorous and nurturing learning environment. We provide students with varied options to explore their academic potential, including extracurricular programs that allow students to expand their learning into the community. Our school educates all students, providing bilingual education/dual language, special education and gifted & talented services to eligible students.

- ♦ **ACADEMIC OFFERINGS:** Gifted & Talented • Art, Band, Choir, Music • Bilingual Education/Dual Language • Special Education: PBIS
- ♦ **EXTRACURRICULAR ACTIVITIES:** Photography Club, Art Club, Garden Club, Chess Club, Fit Girl's Club
- ♦ **EXTENDED DAY PARTNER:** Greater San Antonio After-School All-Stars
- ♦ **PARENT ORGANIZATION:** PTA
- ♦ **COMMUNITY PARTNERS:** SA Heals



**PK-5**

**2018 State Accountability  
Met Standard**

**School Start/End Times:**  
**8:05 a.m. - 3:20 p.m.**

Earliest Drop-off: 7:30 a.m.

Latest Pick-up: 3:20 p.m.

Latest Pick-up

(Extended Day): 6:20 p.m.

**School Uniform Color:**  
White, Black, Red, Khaki



## Woodrow Wilson Elementary School

1421 Clower St., San Antonio, TX 78201 • (210) 738-9845 | [www.saisd.net/wilsones](http://www.saisd.net/wilsones)

At Wilson Elementary, we partner with families and the community to ensure lifelong learning for our students. Our purpose is to empower and inspire our students through a quality education. We offer a bilingual education/dual language program in the early grades and provide students with a number of extracurricular opportunities that round out the educational experience and allow them to build leadership skills.

♦ **ACADEMIC OFFERINGS:** Art, Music • Bilingual Education/Dual Language • Special Education: ACE, PBIS, PPCD

♦ **EXTRACURRICULAR ACTIVITIES:** Art Club, Zumba, Girls on the Run (3rd-5th), Peer Assistance & Leadership (PALs - 4th-5th), Student Safety Patrols (4th-5th), Basketball Club (K-5th), Girls on the Run (3rd-5th), Zumba

♦ **EXTENDED DAY PARTNER:** Greater San Antonio After-School All-Stars

♦ **PARENT ORGANIZATION:** PTA

♦ **COMMUNITY PARTNERS:** HEB



**PK-5**

**2018 State Accountability  
Met Standard**

**School Start/End Times:**  
**8 a.m. - 3:20 p.m.**

Earliest Drop-off: 7:15 a.m.

Latest Pick-up: 3:20 p.m.

Latest Pick-up

(Extended Day): 6 p.m.

**School Uniform Color:**  
White, Navy Blue



## Woodlawn Hills Elementary School

110 W. Quill Drive, San Antonio, TX 78228 • (210) 438-6565 | [www.saisd.net/woodlawnhills](http://www.saisd.net/woodlawnhills)

At Woodlawn Hills Elementary School, we believe in a student-centered, safe learning environment, where students are excited to collaborate with each other. We provide students with a variety of extracurricular options that allow them to explore the activities that best fit their interests and round out the overall educational experience, supporting and strengthening classroom learning. The dedication of our teachers and their commitment to exceptional classroom instruction, along with the programs we offer, help our Woodlawn Hills Trojans succeed. Our school educates all students, providing dual language immersion, special education, and gifted & talented services. Additionally, Woodlawn Hills is an International Baccalaureate (IB) Primary Years Programme (PYP) candidate.

♦ **ACADEMIC OFFERINGS:** International Baccalaureate (IB) Primary Years Programme candidate, Gifted & Talented • Art, Choir, Music • Bilingual Education/Dual Language • Special Education: ACE, PBIS

♦ **EXTRACURRICULAR ACTIVITIES:** WHE Running Club, Robotics Club, Student Safety Patrols, Cheer, Percussion Ensemble, The University of Texas at San Antonio Support and Enrichment Experience in Math (SEE) Tutoring, 5th Grade Community Leaders, Bluebonnet Reading Club

♦ **EXTENDED DAY PARTNER:** YMCA of Greater San Antonio

♦ **PARENT ORGANIZATION:** PTA

♦ **COMMUNITY PARTNERS:** St. Mary's University, University of Texas at San Antonio, San Antonio Youth Literacy (SAYL), San Antonio OASIS, San Antonio Fire Department (Fire House #27), San Antonio Police Department, Northwest Lions Club of San Antonio, PepsiCo, City of San Antonio Student Health Ambassador Program, San Antonio Public Library, Bibiotech, ARJO Huntleigh Global Medical Technology Company, Sun Loan, Title Max, San Antonio Children's Shelter



Breakfast



Lunch



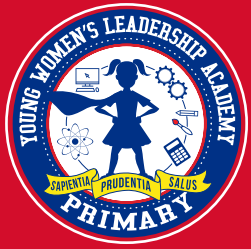
Supper



Magnet Programs



Dual Language



**K-1**

(expanding to K-5)

**School Start/End Times:**  
**8 a.m. - 3:30 p.m.**

Earliest Drop-off: 7:15 a.m.  
Latest Pick-up: 4 p.m.

**School Uniform Color:**

White, Red, Blue

Special uniform to include a white blouse and plaid jumper

**Choice Specialization Program:**

STEAM, Social-Emotional Learning,  
Single Gender

Application required – see page 10.



## Young Women's Leadership Academy Primary

401 Berkshire Ave., San Antonio, TX 78210 • (210) 438-6525 | [www.saisd.net/ywlaprimary](http://www.saisd.net/ywlaprimary)

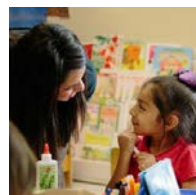
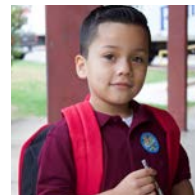
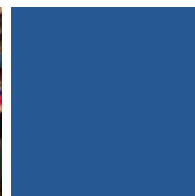
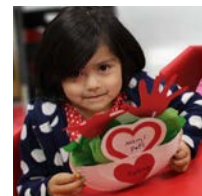
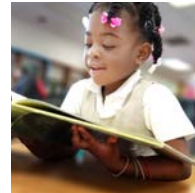
Building upon the success of the Young Women's Leadership Academy, YWLA Primary at Page will be SAISD's first all-girls, college-preparatory, K-5 school with a focus on STEAM (science, technology, engineering, the arts, and math), leadership development, and social-emotional learning. YWLA Primary will offer girls an environment wherein they can learn at an accelerated rate, experience hands-on STEAM projects, and cultivate their leadership. Opening in August 2019 with grades kindergarten and 1st, the school will ultimately become a full K-5 program with a grade phased in each year. YWLA Primary will be open to all girls in Bexar County who are eligible to enter kindergarten or 1st grade in August of 2019. Admission for YWLA will be based on a lottery system.

♦ **ACADEMIC OFFERINGS:** AVID, Gifted & Talented, Leadership Focus, Social-Emotional Learning • STEAM • Art, Choir, Dance, Theatre • Special Education: PBIS

♦ **EXTENDED DAY PARTNER:** TBD

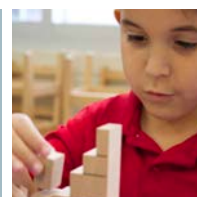
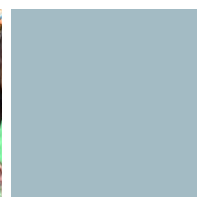
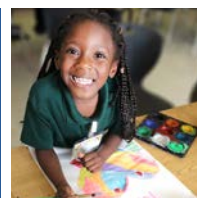
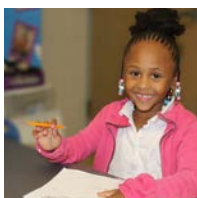
♦ **PARENT ORGANIZATION:** PTSA

♦ **COMMUNITY PARTNERS:** TBD



# EXPERIENCE SAISD EARLY CHILDHOOD EDUCATION CENTERS

- Carroll ECEC
- Gonzales ECEC
- Knox ECEC
- Nelson ECEC
- Tynan ECEC



Breakfast



Lunch



Supper



Magnet Programs



Dual Language



## Head Start-2

**2018 State Accountability  
Met Standard**

**School Start/End Times:**  
**7:30 a.m. - 2:30 p.m.**

Earliest Drop-off: 7:00 a.m.

Latest Pick-up: 3 p.m.

Latest Pick-up

(Extended Day): 6 p.m.

**School Uniform Color:**  
White, Blue, Green



## Henry Carroll Early Childhood Education Center

463 Holmgreen Road, San Antonio, TX 78220 • (210) 978-7965 | [www.saisd.net/carrollecec](http://www.saisd.net/carrollecec)

At Carroll Early Childhood Education Center, we strive to create a campus where students and their families feel welcomed, accepted and respected. We provide creative and flexible learning spaces such as a kitchen classroom, vegetable garden, yoga room, mud kitchen and science lab to educate the whole child through academic and social/emotional learning. Our hallways are student-centered, with interactive learning walks so our students can explore, play, and try new things as they investigate the world around them. We provide a solid foundation for science, technology, engineering, arts and mathematics and believe that there must be a balance between instruction and experiential learning activities where the child can discover and explore through student-directed, hands-on learning activities.

♦ **ACADEMIC OFFERINGS:** Art, Music • Bilingual Education/Dual Language • Special Education: PBIS, PPCD

♦ **EXTRACURRICULAR ACTIVITIES:** After School Enrichment Program

♦ **EXTENDED DAY PARTNER:** YMCA of Greater San Antonio, Early After School Enrichment Program

♦ **PARENT ORGANIZATION:** Parent Connection Committee

♦ **COMMUNITY PARTNERS:** The University of Texas at Austin, The University of Texas at San Antonio, University of the Incarnate Word, Our Lady of the Lake University, KLRN Public Television, San Antonio Police Department, San Antonio Fire Department, University Health System, City of San Antonio, YMCA of Greater San Antonio



## PK3-PK4

**2018 State Accountability  
Met Standard**

**School Start/End Times:**  
**7:30 a.m. - 2:30 p.m.**

Earliest Drop-off: 7:00 a.m.

Latest Pick-up: 2:45 p.m.

**School Uniform Color:**  
White, Blue



## Rafael Gonzales Early Childhood Education Center

518 E. Magnolia Ave., San Antonio, TX 78212 • (210) 438-6830 | [www.saisd.net/gonzalesecec](http://www.saisd.net/gonzalesecec)

At Gonzales Early Childhood Education Center, our program will instill a lifelong love of learning through a wide range of experiences to develop the full potential of every child while working as one team in collaboration with families and the community. The mission of the staff at Gonzales ECEC is to provide a strong educational foundation for young learners, consisting of a high-quality, developmentally appropriate early childhood education to meet the emotional, social, physical and academic needs of all the children in our program. We offer family events during and after the school day to promote our learning in and out of school. Our school educates all students, providing bilingual education/dual language program and special education to eligible students.

♦ **ACADEMIC OFFERINGS:** Bilingual Education/Dual Language • Special Education: Bilingual PPCD, PBIS

♦ **EXTENDED DAY PARTNER:** After School Enrichment Program partnered with PreK4SA (COSA)

♦ **PARENT ORGANIZATION:** Parent Volunteer room

♦ **COMMUNITY PARTNERS:** The University of Texas at San Antonio, San Antonio College, San Antonio Public Library



## Head Start

**2018 State Accountability  
Met Standard**

**School Start/End Times:**  
**7:30 a.m. - 2:30 p.m.**

Earliest Drop-off: 7:00 a.m.

Latest Pick-up: 2:45 p.m.

Latest Pick-up

(Extended Day): 6 p.m.

**School Uniform Color:**  
Blue, Orange



## William J. Knox Early Childhood Education Center

302 Tipton Ave., San Antonio, TX 78204 • (210) 228-3365 | [www.saisd.net/knoxecec](http://www.saisd.net/knoxecec)

At Knox Early Childhood Education Center, we believe all children are unique and develop at their own pace. We provide students with educational experiences through play, extend their learning through field experiences, and nurture their individuality through positive connections in a safe and loving environment. We use hands-on materials to engage their learning and expand their knowledge of the world around them. Our school educates all students, providing bilingual education/dual language, special education speech services and a preschool program for children with disabilities to eligible students.

♦ **ACADEMIC OFFERINGS:** Bilingual Education/Dual Language • Special Education: PBIS, PPCD

♦ **EXTRACURRICULAR ACTIVITIES:** Science-based instruction, Role-playing through Magik Theatre during ASEP

♦ **EXTENDED DAY PARTNER:** After School Enrichment Program

♦ **PARENT ORGANIZATION:** PCC (Parent Community Council)

♦ **COMMUNITY PARTNERS:** The University of Texas at San Antonio, Texas A&M University - San Antonio, Magik Theatre



## Head Start

**2018 State Accountability  
Met Standard**

**School Start/End Times:**  
**7:30 a.m. - 2:30 p.m.**

Earliest Drop-off: 7:00 a.m.

Latest Pick-up: 2:45 p.m.

Latest Pick-up

(Extended Day): 6 p.m.

**School Uniform Color:**  
White, Green



## Pauline Nelson Early Childhood Education Center

1014 Waverly Ave., San Antonio, TX 78201 • (210) 438-6555 | [www.saisd.net/nelsonecec](http://www.saisd.net/nelsonecec)

At Pauline Nelson Early Childhood Education Center, we believe in hands-on, child-centered learning. We provide students with experiences focused on developing them academically, physically and socially. Each Nelson student is exposed to a highly qualified teacher and instructional assistant who are trained to work with young children. Students at Nelson have access to a STEM studio that engages them in the areas of science, technology, engineering, and math, which enhances 21st-century learning. Nelson students will transition to kindergarten with a firm foundation and an instilled love and strong desire for learning. Working together with the family, we can ensure each Nelson Lion is prepared to succeed not only in academics but in life as well.

♦ **ACADEMIC OFFERINGS:** Bilingual Education/Dual Language • Special Education: PPCD

♦ **EXTRACURRICULAR ACTIVITIES:** Book Club, After School Enrichment Activities

♦ **EXTENDED DAY PARTNER:** After School Enrichment Program

♦ **PARENT ORGANIZATION:** PCC

♦ **COMMUNITY PARTNERS:** Texas A&M, The University of Texas at San Antonio, City of San Antonio CARE program



Breakfast



Lunch



Supper



Magnet Programs



Dual Language



## Head Start

**2018 State Accountability  
Met Standard**

**School Start/End Times:**  
**7:30 a.m. - 2:30 p.m.**

Earliest Drop-off: 7:00 a.m.

Latest Pick-up: 3 p.m.

Latest Pick-up  
(Extended Day): 6 p.m.

**School Uniform Color:**  
White, Black, Orange

## Elizabeth Tynan Early Childhood Education Center

925 Gulf St., San Antonio, TX 78202 • (210) 738-9835 | [www.saisd.net/tynanecec](http://www.saisd.net/tynanecec)

Tynan Early Childhood Education Center provides a comprehensive, early childhood education that is focused on educating the whole child through academic and social-emotional learning to prepare our students for success in school, and in life. Our full-time pre-kindergarten program provides a solid foundation for Science, Technology, Engineering, Arts and Mathematics (STEAM). STEAM learning happens naturally every day at Tynan as we provide opportunities for our students to explore, play, and try new things as they investigate the world around them. We believe that there must be a balance between instruction and experiential learning activities where the child can discover and explore through hands-on learning.

♦ **ACADEMIC OFFERINGS:** Bilingual Education/Dual Language • Special Education: PBIS, PPCD

♦ **EXTRACURRICULAR ACTIVITIES:** Early After School Enrichment Program

♦ **EXTENDED DAY PARTNER:** City of San Antonio

♦ **PARENT ORGANIZATION:** Parent Connection Committee

♦ **COMMUNITY PARTNERS:** Center for New Communities, City of San Antonio, Harvard Place/East Lawn Neighborhood Association, Family Services Association, East Side Promise Neighborhood, The University of Texas at San Antonio, University Health System, SAPD, SAFD, University of the Incarnate Word, HEB, San Antonio Food Bank, Dental Quest, Baptist Health System, San Antonio Library, Metro Health System, Goodwill of San Antonio



# EXPERIENCE SAISD SCHOOLS BY REFERRAL

- Brewer Academy
- Cooper Academy at Navarro
- Estrada Achievement Center
- Healy-Murphy Learning Center
- Texans Can Academy at Highlands High School



Breakfast



Lunch



Supper



Magnet Programs



Dual Language



6-12

2018 State Accountability  
Not Rated

**School Start/End Times:**

**9 a.m. - 3:45 p.m.**

Earliest Drop-off: 8:10 a.m.

Latest Pick-up: 5 p.m.



9-12

2018 State Accountability  
Improvement Required

**School Start/End Times:**

**8:30 a.m. - 4 p.m.**

Earliest Drop-off: 7:45 a.m.

Latest Pick-up: 4:30 p.m.

**School Uniform Color:**

White



## Raymond H. Brewer Academy

906 Merida St., San Antonio, TX 78207 • (210) 438-6825

At Brewer Academy, we serve students receiving special education services who are experiencing significant emotional and behavioral disorders. Our school provides an environment that encourages students to develop their intellectual, linguistic, social, emotional, civic and physical abilities. SAISD has partnered with the John H. Wood Charter School to bring in their extensive expertise to Brewer, providing individualized instruction and therapeutic educational services.

◆ **ACADEMIC OFFERINGS:** Special education campus, bilingual education/dual language

◆ **COMMUNITY PARTNERS:** Brainerd

## James Fenimore Cooper Academy at Navarro

623 S. Pecos St., San Antonio, TX 78207 • (210) 438-6810 | [www.saisd.net/cooperacademy](http://www.saisd.net/cooperacademy)

We believe our students' past is not their future. We provide students with the opportunity to earn their high school diploma. We provide services to students between the ages of 15 and 25. Students have the opportunity to attend during the regular school day from 8:30 a.m.-4 p.m. at our main campus or at one of three satellite campuses. They also may attend our Twilight Program, which operates Tuesday through Thursday from 4-8 p.m. These programs provide opportunities for students who were not successful in a traditional campus setting.

◆ **ACADEMIC OFFERINGS:** CNA • Special Education: PBIS • Art

◆ **EXTRACURRICULAR ACTIVITIES:** Student Class Sponsors

◆ **AFTER-SCHOOL PROGRAM PROVIDER:** Twilight After-School Program 4 p.m. - 8 p.m.



6-12

2018 State Accountability  
Not Rated

School Start/End Times:  
8:45 a.m. - 4:p.m.  
Earliest Drop-off: 8:30 a.m.  
Latest Pick-up: 3:30 p.m.

School Uniform Color:  
White, Gray



## Dr. Ramiro P. Estrada Achievement Center

1112 S. Zarzamora St., San Antonio, TX 78207 • (210) 438-6820 | [www.saisd.net/estradaac](http://www.saisd.net/estradaac)

At Estrada Achievement Center, a school that provides a disciplinary alternative education program (DAEP), we believe in restorative discipline as a means of teaching lifelong learning skills to students. Estrada's mission is to instill in students a positive attitude toward school that exemplifies honor, dignity and respect for self and others. Our service-learning class and counseling sessions provide students the opportunity to practice positive social/behavioral skills to ensure success in the classroom and their daily lives. These programs help students explore expanded career opportunities, develop self-esteem and teach social skills in an environment of healthy competition. The motto of the Estrada Program is "Be the Shepherd." Estrada students are expected to serve as role models, mentors and leaders for others.

♦ **ACADEMIC OFFERINGS:** Special Education: PBIS

♦ **COMMUNITY PARTNERS:** San Antonio Council on Alcohol and Drug Awareness (SACADA), Rise Recovery, Draw the Line



9-12

2018 State Accountability  
Not Rated

School Start/End Times:  
7:45 a.m. - 3:45 p.m.



## Healy-Murphy Learning Center

618 Live Oak St., San Antonio, TX 78202 • High School and GED: (210) 223-2944  
Child Development Center: (210) 224-9569 • [www.healymurphy.org/](http://www.healymurphy.org/)

Healy-Murphy Center is a satellite campus for SAISD. Teens who have had difficulty succeeding in a traditional school environment can find the one-on-one attention, individualized curriculum, counseling, childcare and health services they need to succeed in school and in life. Healy-Murphy Center offers high school and GED programs, as well as pre-kindergarten for 3- and 4-year-olds. The mission of Healy-Murphy Center is to provide compassionate service to youth-in-crisis by focusing on individualized education in a non-traditional setting, early childhood development and essential support services.

♦ **AFTER-SCHOOL PROGRAM PROVIDER:** Healy-Murphy Child Development Center



Breakfast



Lunch



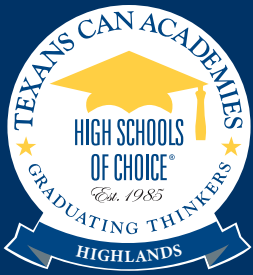
Supper



Magnet Programs



Dual Language



9-12

**2018 State Accountability  
Not Rated**

**Morning session:**

7:45 a.m. – 12:30 p.m.

**Afternoon Session:**

1 p.m. – 4:45 pm

**School Uniform Color:**

Maroon, White, Gray or black Texans Can polo with khaki or black pants



## Texans Can Academy at Highlands High School

3118 Elgin Ave., San Antonio, TX 78210 • (210) 426-6808  
www.texanscan.org/schools-and-programs/highlands/

Located on the Highlands High School campus, this specialized school is for students who are behind their cohorts one or more years and are interested in going into a program with more extensive support to get back on track to graduate. Students continue to stay at a comprehensive high school campus, but get the benefit of being part of this focused program. Students select a modified daily schedule that meets his or her personal needs to accommodate family care, work schedules, medical care and/or high school extracurricular activities. Students also benefit from smaller class sizes, wrap-around advisory and counseling services, and access to the electives and extracurriculars at Highlands High School. The learning methods and nurturing environment empowers students to be lifelong thinkers, ensuring their path to economic independence.

♦ **ACADEMIC OFFERINGS:** Half-day program • Career and Technical offerings • Special Education: ACE, BSC, PBIS

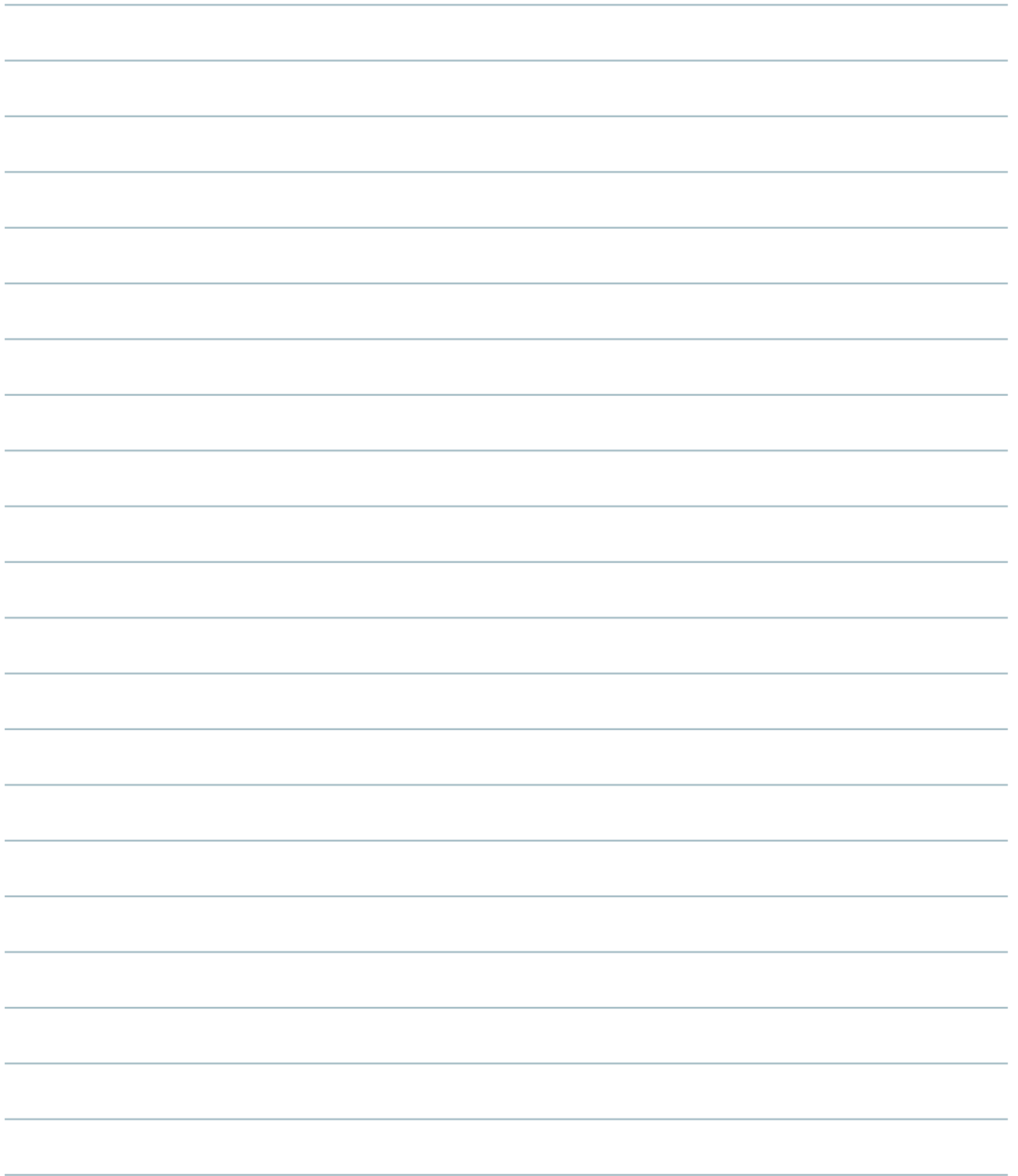
♦ **EXTRACURRICULAR ACTIVITIES:** Any extracurricular activities offered through Highlands High School (see page 29)

♦ **COMMUNITY PARTNERS:** Texans Can Academies



[illegible]

[illegible]





**San Antonio Independent School District**

141 Lavaca Street, San Antonio, Texas 78210

[www.saisd.net/enroll](http://www.saisd.net/enroll)

